

**WE'VE THOUGHT  
OF EVERYTHING.**

# BRINDINI

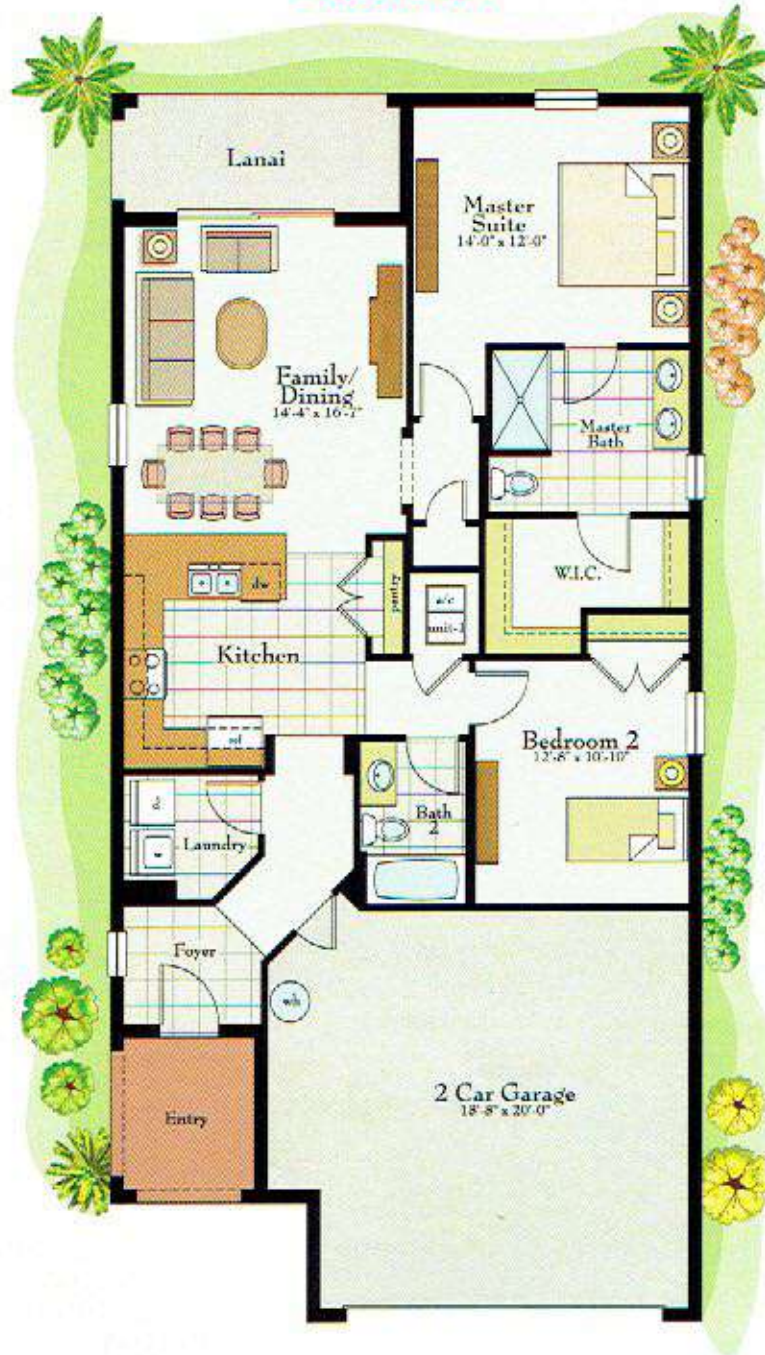


*See reverse side for floorplan and options.*

# BRINDINI

1,205 SQ. FT. • 2 BEDS • 2 BATHS • 2-CAR GARAGE

## FLOORPLAN



For more information, visit the Solivita New Homes Sales Center.

395 Village Drive, Kissimmee, Florida 34759

877-335-1543 • AVHomesInc.com

