

RESOURCE

Algorithm

for Fall Risk Screening, Assessment, and Intervention

As a healthcare provider, you are already aware that falls are a serious threat to the health and well-being of your older patients.

More than one out of four people 65 and older falls each year, and over 3 million are treated in emergency departments annually for fall injuries.

The CDC's STEADI initiative offers a coordinated approach to implementing the American and British Geriatrics Societies' clinical practice guideline for fall prevention. STEADI consists of three core elements: **Screen**, **Assess**, and **Intervene** to reduce fall risk.

The **STEADI Algorithm for Fall Risk Screening, Assessment and Intervention** outlines how to implement these three elements.

Additional tools and resources include:

- ▶ Information about falls
- ▶ Case studies
- ▶ Conversation starters
- ▶ Screening tools
- ▶ Standardized gait and balance assessment tests (with instructional videos)
- ▶ Educational materials for providers, patients, and caregivers
- ▶ Online continuing education
- ▶ Information on medications linked to falls
- ▶ Clinical decision support for electronic health record systems

CDC's STEADI tools and resources can help you screen, assess, and intervene to reduce your patient's fall risk. For more information, visit www.cdc.gov/steadi



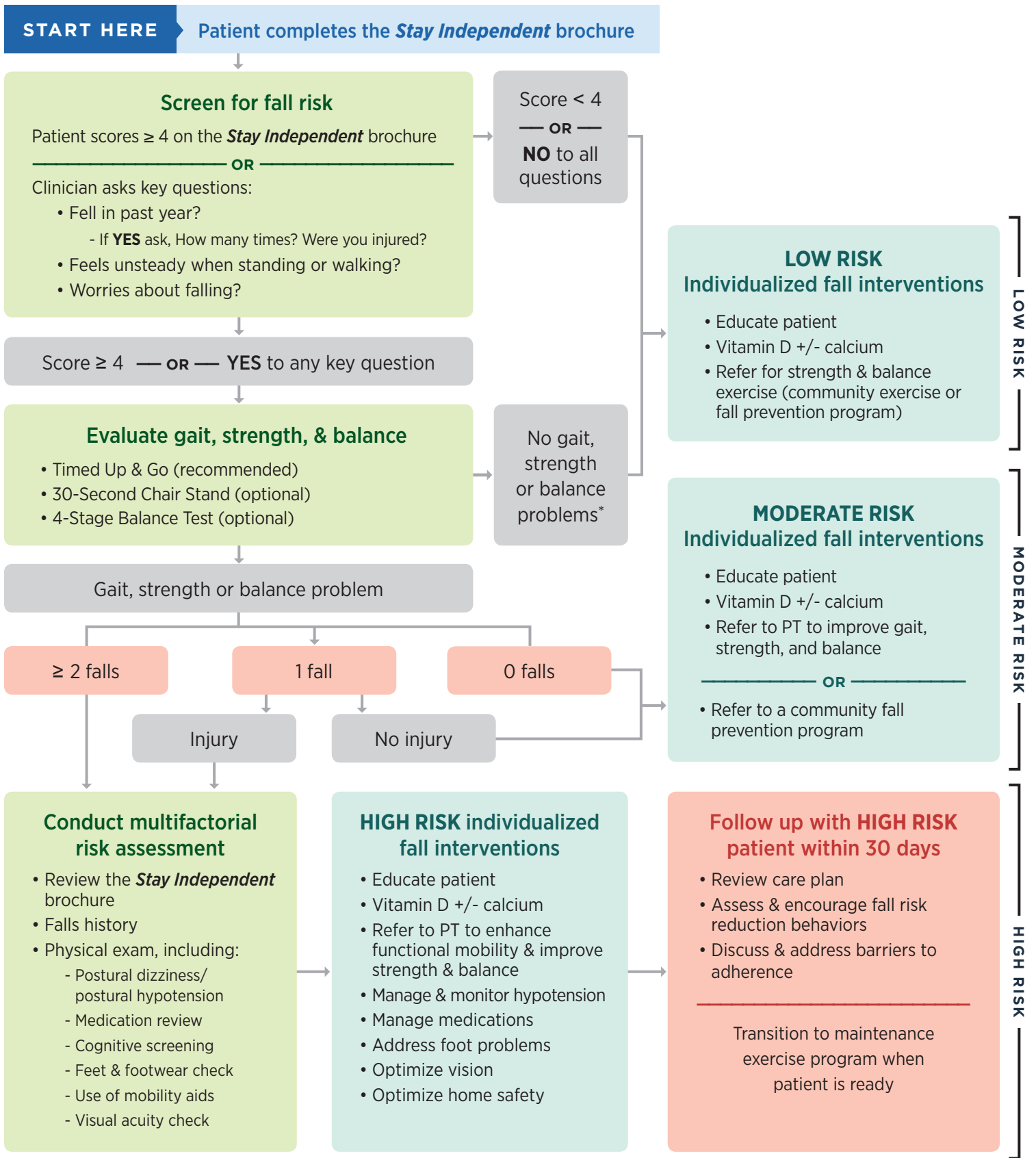
You play an important role in caring for older adults, and you can help reduce these devastating injuries.



Centers for Disease Control and Prevention
National Center for Injury Prevention and Control

STEADI Stopping Elderly Accidents, Deaths & Injuries

Algorithm for Fall Risk Screening, Assessment, and Intervention



*For these patients, consider additional risk assessment (e.g., medication review, cognitive screen, snycope).

