

WOLF-LINDE AMMONIA FLANGES

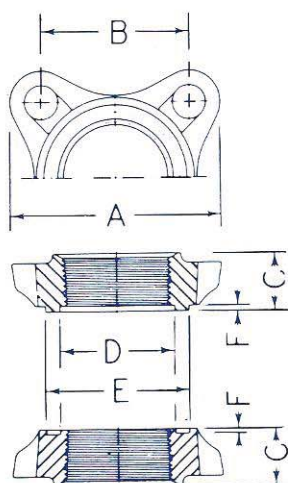
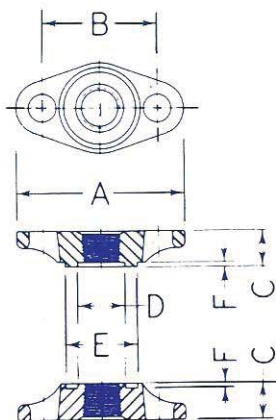
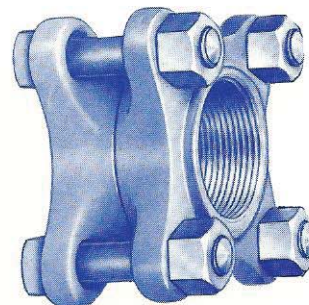
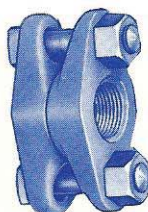
P-15

W-L

193

AS SHOWN BELOW, THE AMMONIA FLANGES ARE SCREWED OR THREADED AND ARE SOMETIMES REFERRED TO AS FPT (FEMALE PIPE THREAD).

THE OVAL AMMONIA FLANGE (2-BOLT) RANGES IN SIZE FROM 1/4" THRU 1". THE SQUARE AMMONIA FLANGE (4-BOLT) SIZES RANGE FROM 1" THRU 4".



STYLE OF FLANGE	SIZE OF PIPE INCHES	CODE NO. OF FLANGE	A OUTSIDE SIZE OF FLANGE, INCHES	B CENTER OF FLANGE BOLTS, INCHES	C THICKNESS OF FLANGE, INCHES	NOMINAL TONGUE & GROOVE DIMENSIONS			BOLTS		WT. OF SINGLE FLANGE ONLY, LBS.	WT. OF FLANGE UNION, LBS.
						D I.D., INCHES	E O.D., INCHES	F DEPTH, INCHES	NO.	SIZE, INCHES		
OVAL	1/4	4265	3 5/8	2 3/8	7/8	1 5/16	1 7/16	3/32	2	1/2	3/4	2
	3/8	4264	3 5/8	2 3/8	7/8	1 5/16	1 7/16	3/32	2	1/2	3/4	2
	1/2	4263	3 5/8	2 3/8	7/8	1 5/16	1 7/16	3/32	2	1/2	3/4	2
	3/4	832	4 3/8	3	1 5/16	1 1/4	1 7/8	1/8	2	5/8	1	3
	1	831	4 3/8	3	1 5/16	1 3/8	1 7/8	1/8	2	5/8	1	3

SQUARE	1	2800	3 1/2	2 3/8	1 1/16	1 3/4	2 3/8	1/8	4	1/2	2	5
	1 1/4	2793	3 1/2	2 3/8	1 1/16	1 3/4	2 3/8	1/8	4	1/2	1 3/4	4 1/2
	1 1/2	4262	4	2 3/4	1 1/8	2	2 3/4	1/8	4	1/2	2 1/4	5 1/2
	2	489	4 1/2	3 1/16	1 1/8	2 1/2	3 1/4	1/8	4	5/8	2 1/2	7
	2 1/2	779	5 1/2	3 7/8	1 1/2	3	3 3/4	1/8	4	3/4	5	12 1/2
	3	30	6	4 1/8	1 9/16	3 5/8	4 3/8	1/8	4	3/4	6	15
	3 1/2	823	7	5	1 3/4	4 3/4	5 1/2	1/8	4	7/8	13	30
	4	40	7	5	1 7/8	4 3/4	5 1/2	1/8	4	7/8	9	22

Blind and threaded reducing flanges are available in all the above sizes. Blind and threaded reducing flanges in sizes 2 1/2" and larger are made from semi-steel gray iron castings. The 3 1/2" threaded flange is made from a semi-steel gray iron casting.