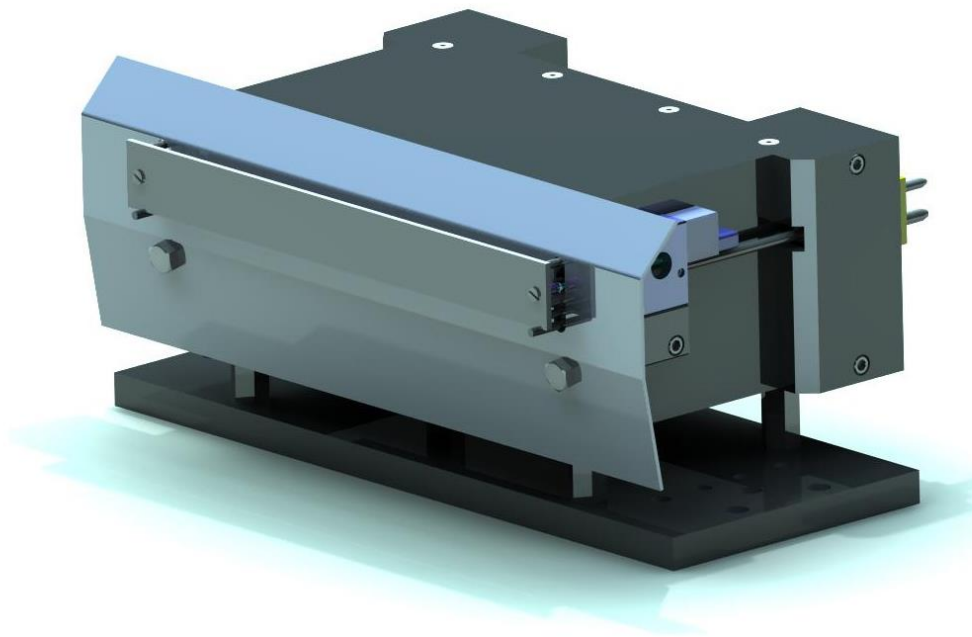





ICP-8 Sensor Parts List



Consumable Parts

Item	Description	Order No.
01	 Quartz Laser Window	01-0003
02	 K-Type Contact Thermocouple	01-0004
03	 Spring Catcher (English)	01-0017
04	 Spring Catcher (Metric)	01-0018
05	 ICP-8 Shield (Version 5)	01-0189
06	 Spring Catcher Hook	01-0055
07	 Maintenance Kit	03-0010

Please contact ReliaCoat Technologies for pricing and availability

Sensor System Component Parts

Item	Description	Order No.
01	 ICP-8 Base Plate (English)	01-0005
02	 ICP-8 Base Plate (Metric)	01-0006
03	 Laptop Computer with Pre-installed ICP Application	01-0024
04	ICP Application (Software Only)	ICP Application
05	 Customized Shipping Enclosure	01-0025
06	 4mm Laser Calibration Bar	01-0026
07	 Bandpass Filter	01-0122
08	 ICP-8 Sensor Upgrade (Rev. B)	02-0009

Please contact ReliaCoat Technologies for pricing and availability

ICP-8 Substrate Materials

Item	Description	Available Substrate Thicknesses			
		1/16" (1.6mm)	3/32" (2.4mm)	1/8" (3.2mm)	0.160" (4mm)
01	Aluminum 6061*	◆	◆	◆	◆
02	Aluminum 2024*		◆	◆	
03	Aluminum 7075*		◆	◆	
04	Steel 1018	◆	◆	◆	
05	Steel 4130	◆	◆		
06	Stainless Steel 304	◆	◆		
07	Stainless Steel 316	◆	◆		
08	Stainless Steel 15-5 PH	◆	◆		
09	Inconel 718	◆			
10	Hastelloy-X	◆			
11	Invar 36	◆			
12	Ti-6Al-4V		◆	◆	◆
13	Magnesium		◆		
14	FeCr Alloy		◆		

**Substrates are offered with pre-grit blasted, vacuum annealed in vacuum sealed packages.
Please contact ReliaCoat Technologies for pricing and availability
Other substrate materials and thicknesses are available upon request*