

## KSB Pumps, Valves & Systems - **The heart of your system**

Fluid is one of the most dynamic elements of nature. Whenever there arises a need to harness this vibrant energy, KSB provides the ultimate technology. Wherever the task, whatever the expectations, KSB yields a free flow of solutions. Right from transportation and distribution of water, waste water and industrial fluids, to thermal and air-conditioning system needs. KSB regulates every element to perfection, economically, efficiently and reliably. A technology leader offering total fluid dynamics and handling solutions, KSB specialises in high-quality customer care. Support that is extended through consultation, planning, installation, maintenance and round the clock back-up. While KSB pumps gush out a free flow to success, KSB valves monitor and ensure the success. Today, KSB specialises in customising products, systems, services and solutions to conquer the most dynamic elemental force in the world.



Etaline



SICCA® 900-2500  
Type GLC



moviBOOST V



Pumps for **water, waste water treatment, sewage handling & industrial applications**

## Product &amp; it's operating range

## Ama® Drainer



Pump Size	32 mm
Capacity	up to 230 lpm
Head	up to 12 m
Motor	in 1Ø 0.5 kW
Temperature	up to 40°C

## Construction and applications

Ama-Drainer 300 series  
Vertical fully floodable submersible motor with In built swing check valve. Jacket cooled single phase motor with integrated temperature switch. Float switch for automatic operation.  
Suitable for lowering surface water level, transfer of water, agricultural pits, & sprinklers in gardens, drainage of cellars / basin

## Ama® Porter



Pump Size	50 mm
Capacity	up to 480 lpm.
Head	up to 15 m
Motor Rating	up to 1.1 kW (1Ø) up to 1.5 kW (3Ø)
Temperature	up to 40°C

Vertical, monobloc pumpset, free flow impeller of two sizes, 1Ø and 3Ø motors with IP 68 protection, 1Ø motor with built-in thermal overload protection and float switch, bi-directional mechanical seal.  
Suitable for pumping surface water, rain water, waste water containing solids, drainage of sumps liable to flood, agricultural pits and canals.

## MONOSUB REG D



Pump Size	up to 50 mm
Capacity	up to 733 lpm
Head	up to 30 m
Motor rating	up to 3.7 kW
Temperature	Ambient

Single stage, submersible centrifugal pumps of closed coupled (monobloc) construction.  
For De-watering pumps for storm water and rain water pumping applications

## Amarex IN, KRTU



Pump Size	65 & 100 mm
Capacity	up to 200 m <sup>3</sup> /hr
Head	up to 49 m
Motor Rating	up to 9.5 kW
Temperature	up to 80°C
Speed	up to 2900 rpm

Single stage, submersible, centrifugal pumps of closed coupled (monobloc) construction.  
**Amarex IN** pumps are suitable for handling waste water transport, storm water transport, waste water treatment etc.  
**KRTU** pumps are suitable for handling municipal and industrial waste water. 3 types of impellers available to suit a variety of needs - E (single vane), K (non-clog two channel) & F (free flow) in transportable and stationary installation.

## KRT, KRTE



Pump Size	up to 350 mm
Capacity	up to 3000 m <sup>3</sup> /hr.
Head	up to 60 m
Motor rating	up to 165 kW
Temperature	up to 40°C

Single stage, submersible centrifugal pumps of closed coupled (monobloc) construction.  
For pumping all types of sewage, and effluent in water treatment and industry, especially untreated sewage, with long fibers and solid substances, liquids containing air and gas as well as raw, activated and digested sludge.

## Pumps for water supply, transport and treatment for industrial, municipal and building services applications

## Product &amp; it's operating range

## Construction and applications

## KWP



Pump Size	65 to 250 mm
Capacity	up to 1300 m <sup>3</sup> /hr.
Head	up to 100 mtrs.
Pressure	up to 10 bar
Temperature	-30 to 250°C
Speed	up to 2900 rpm

Horizontal, end suction pump in back pull-out design with radial flow impellers of single, double, or multivane, closed or semi-closed type.

Suitable to handle contaminated fluids, sludges, slurries, fluids containing ad-mixture and thick stock of all kinds having consistency up to 3%.

## MEGA



Pump Size	32 to 150 mm
Capacity	up to 540 m <sup>3</sup> /hr.
Head	up to 100 m
Discharge press.	up to 16 bar
Temperature	-30 to 160°C
Speed	up to 3600 rpm

Horizontal, end suction, centrifugal, radially split volute casing pumps in back-pull-out design fitted with single stage radial impeller.

Suitable for handling clear liquids in applications for water supply, irrigation, air-conditioning, fire fighting, auxiliary process in paper, cellulose, sugar, food and textile industries.

## Etanorm G



Pump Size	25 to 150 mm
Capacity	up to 660 m <sup>3</sup> /hr.
Head	up to 160 m
Discharge press.	up to 16 bar
Temperature	-30 to 140°C
Speed	up to 2900 rpm

Horizontal, end suction, centrifugal, radially split volute casing pumps in back-pull-out design fitted with single stage radial impeller.

Suitable for general water supply, sprinkling, irrigation, booster plants, circulation of warm, hot and cooling water, delivery of condensate and boiler-feed water and fire fighting applications.

## Etabloc



Pump Size	25 to 150 mm
Capacity	up to 640 m <sup>3</sup> /hr.
Head	up to 160 m
Discharge press.	up to 16 bar
Temperature	-30 to 140°C
Speed	up to 2900 rpm

Compact, horizontal, end suction, centrifugal, radially split volute casing pumps in monobloc construction.

Suitable for general water supply, sprinkling, irrigation, booster plants, circulation of warm, hot and cooling water, delivery of condensate and boiler-feed water and fire fighting applications.

## Etaline



Pump Size	32 to 200 mm
Capacity	up to 700 m <sup>3</sup> /hr.
Head	up to 95 m
Discharge press.	up to 16 bar
Temperature	-30 to 140°C
Speed	up to 2900 rpm

Centrifugal, radially split in-line pumps in monobloc construction. Can be mounted horizontally or vertically. Flanges are drilled to ASME or EN standard. Suction and delivery sizes are common and hence no need of expander.

Suitable for fire fighting, air conditioning, industrial recirculation, HVAC systems etc.

BRAAMD, Inc.

Phase 5 B73 Lots 1-2 Rodeo Drive, Laguna Bel Air 2, Brgy. Don Jose, Santa Rosa City, Laguna Philippines 4026  
TeleFax: +63 49 260 0975 • Mobile: +63 917 554 2310 • Email: sales@braamd.com • Website: www.braamd.com

Pumps for **water supply, transport and treatment for industrial, municipal and building services applications**

## Product &amp; it's operating range

## Construction and applications

## MOVI



Pump Size	32 mm
Capacity	up to 18 m <sup>3</sup> /hr.
Head	up to 400 m
Discharge press.	up to 40 bar
Temperature	-10 to 140°C
Speed	up to 2900 rpm

Horizontal, radially split, ring section, multi-stage pumps with radial impellers.  
Suitable for general water supply, sprinkling, irrigation, booster plants, circulation of warm, hot and cooling water, delivery of condensate and boiler-feed water and fire fighting applications.

## WK, WL, WKS, WKFI



Pump Size	40 to 150 mm
Capacity	up to 630 m <sup>3</sup> /hr.
Head	up to 780 m
Discharge press.	up to 63 bar
Temperature	up to 230°C
Speed	up to 4500 rpm

Horizontal, radially split, ring section, high pressure multi-stage pumps with radial impellers.  
Suitable for water works, irrigation, sprinkler, installations, boiler-feed applications, condensate extraction, fire fighting and generating high pressure water used in hydraulic presses and descaling plants.

## WKL



Pump Size	40 mm
Capacity	up to 27 m <sup>3</sup> /hr.
Head	up to 250 m
Discharge press.	up to 28 bar
Temperature	up to 140°C
Speed	up to 2900 rpm

Horizontal, radially split, ring section, multi-stage pumps with radial impellers.  
Suitable for water works, irrigation, sprinkler installations, boiler-feed applications, condensate extraction, fire fighting and generating high pressure water used in hydraulic presses and descaling plants.

## Multitec



Pump Size	32 to 150 mm
Capacity	up to 850 m <sup>3</sup> /hr.
Head	up to 630 mtrs.
Pressure	up to 63 bar
Temperature	-10 to 200°C
Speed	up to 4000 rpm

Centrifugal, ring section, multi-stage pumps in modular design for handling pure and slightly aggressive media.  
Suitable for water works, irrigation and boiler feed applications.

## HDA, HDB



Pump Size	40 to 150 mm
Capacity	up to 576 m <sup>3</sup> /hr.
Head	up to 2245 mtrs.
Pressure	up to 230 bar
Temperature	up to 200°C
Speed	up to 5500 rpm

Horizontal, high pressure multi-stage pumps with ring section casing and radial single entry impellers.  
Suitable for boiler-feed applications and in high pressure hydraulic circuits for coke cutting, descaling and municipal water supply.

BRAAMD, Inc.

Phase 5 B73 Lots 1-2 Rodeo Drive, Laguna Bel Air 2, Brgy. Don Jose, Santa Rosa City, Laguna Philippines 4026  
TeleFax: +63 49 260 0975 • Mobile: +63 917 554 2310 • Email: sales@braamd.com • Website: www.braamd.com



**Pumps for water supply, transport and treatment for industrial, municipal and building services applications**

**Product & it's operating range**

**Construction and applications**

**Omega**



<b>Pump Size</b>	DN 80 to 300 mm
<b>Capacity</b>	up to 900 m <sup>3</sup> /hr.
<b>Head</b>	up to 105 mtrs.
<b>Pressure</b>	up to 25 bar
<b>Temperature</b>	Up to 80°C

Centrifugal, horizontal split casing pumps with double entry impeller design.  
Suitable for general water works, pumping stations, power stations, industrial water supply etc.

**Movitec B**



<b>Pump Size</b>	2, 4, 6, 10, 15, 25, 90
<b>Capacity</b>	up to 112.8 m <sup>3</sup> /hr.
<b>Head</b>	up to 225 mtrs.
<b>Pressure</b>	up to 40 bar
<b>Temperature</b>	-20 to 140°C
<b>Speed</b>	up to 3600 rpm

Multi-stage, vertical inline high-pressure centrifugal pumps in ring-section design.  
Suitable for general water supply, sprinkling, irrigation and pressure boosting systems, warm water, hot water and cooling water re-circulation, boiler feed systems, domestic water supply systems and washing plants.

**moviBOOST Kt, Vt, VPt**



<b>Capacity</b>	up to 660 m <sup>3</sup> /hr.
<b>Head</b>	up to 160 m
<b>Inlet Pressure</b>	up to 10 bar
<b>Disc. Pressure</b>	10 & 16 bar
<b>Temperature</b>	up to 70°C
<b>Supply voltage</b>	415 V, 50 Hz

Fully automatic pressure boosting units available in three variants - Kt, Vt & VPt with 2 to 6 vertical high-pressure pumps and fully electronic control of the required supply pressure with two standard volt-free contacts for fault indication.  
Suitable for residential buildings, hospitals, office buildings, hotels, departmental stores etc.

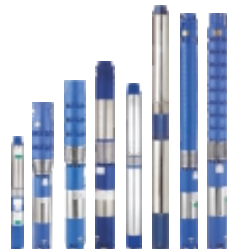


Pumps for **water supply, transport and treatment for industrial, municipal and building services applications**

## Product &amp; it's operating range

## Construction and applications

## Submersible Motor Pumps



<b>Well diameter</b>	min. 75 mm
<b>Capacity</b>	up to 900 m <sup>3</sup> /hr.
<b>Head</b>	up to 360 m
<b>Motor rating</b>	up to 110 kW
<b>Temperature</b>	Ambient
<b>Speed</b>	2900 rpm

Submersible pump in multi-stage construction with radial or mixed flow impellers coupled with oil or water filled, single/three phase submersible motors. Pumps with SS jacket are also available up to 100 mm diameter.

Suitable for horticulture, irrigation, housing, building services and farm houses, ornamental fountains etc.

## Submersible Pumps in Stainless Steel



<b>Pump models</b>	4
<b>Capacity</b>	up to 58 lpm
<b>Head</b>	up to 180 mtrs.
<b>Temperature</b>	Ambient
<b>Motor rating</b>	up to 11 kW

KSBsol - A complete Stainless Steel Solar pump series viz. CU 100, CB 100 in 100 mm (4") & CU 150, CB 150 in 150 mm (6") is built in India with German technology. KSBsol offers a range of borewell submersible pump and AC motor sets are specially designed and matched to your requirements of solar pumping application.

## PERIBLOC



<b>Pump models</b>	8
<b>Capacity</b>	up to 67 lpm
<b>Head</b>	up to 48 mtrs.
<b>Temperature</b>	Ambient
<b>Motor rating</b>	up to 1 HP

Mini monobloc pumpsets in compact design. Available in 8 models - PERIBLOC I & II, Delite I & Delite II, Deluxe I & Deluxe II, PERIBLOC GX I & GX II are available in CI version.

Suitable for pumping of water to overhead tanks, in bungalows, fountains, fountains etc.

## CUTE



<b>Pump size</b>	25 mm
<b>Capacity</b>	up to 1700 lph
<b>Head</b>	up to 36 mtrs.
<b>Temperature</b>	Ambient
<b>Motor rating</b>	up to 1 HP

Self priming mini monobloc pumps in compact design. Can withstand wide voltage range. Suction lift up to 8 m is possible.

Suitable for pumping of water to overhead tanks, in bungalows, fountains, farmhouses etc.

## AGRIBLOC



<b>Pump size</b>	up to 80 x 80 mm
<b>Capacity</b>	up to 920 lpm
<b>Head</b>	up to 30 mtrs.
<b>Temperature</b>	Ambient
<b>Motor rating</b>	up to 2 HP

Single stage, monobloc pumps in compact and light weight design. These pumps are available in single phase power supply. Dynamically balanced rotating parts ensures minimal vibrations.

Suitable for agriculture, industries, gardens, fountains etc.

BRAAMD, Inc.

Phase 5 B73 Lots 1-2 Rodeo Drive, Laguna Bel Air 2, Brgy. Don Jose, Santa Rosa City, Laguna Philippines 4026  
 TeleFax: +63 49 260 0975 • Mobile: +63 917 554 2310 • Email: sales@braamd.com • Website: www.braamd.com

Pumps for **water supply, transport and treatment for industrial, municipal and building services applications**

## Product &amp; it's operating range

## MONOSUB R, RE



<b>Pump size</b>	25 to 100 mm
<b>Capacity</b>	up to 695 lpm
<b>Head</b>	up to 33 mtrs.
<b>Temperature</b>	Ambient
<b>Motor rating</b>	up to 12.5 HP

## Construction and applications

Single stage, monobloc, open-well submersible pumps. Suitable for agriculture, drinking water supply, fountains, buildings, farm houses etc. Available in single and three phase models.

## PERISTAR SSE



<b>Pump model</b>	1
<b>Capacity</b>	up to 1400 lph
<b>Head</b>	up to 24 mtrs.
<b>Temperature</b>	Ambient
<b>Motor rating</b>	up to 0.5 HP

Monobloc pumps in compact design. Stainless Steel casing with Brass impellers and Stainless Steel shaft, Aluminium die cast motor body.

Pumps can be used for booster applications, residential flats, water circulation in solar systems etc.

## PERISTAR V



<b>Pump models</b>	3
<b>Capacity</b>	up to 2700 lph
<b>Head</b>	up to 39 mtrs.
<b>Temperature</b>	Ambient
<b>Motor rating</b>	up to 1 HP

Centrifugal pumps in monobloc construction. Self priming up to 8 m. Robust and sturdy design. Capacitor start and run type design eliminates centrifugal switch. Pressure die cast rotor with TEFC enclosure for motors. FAG make ball bearings sealed for life.

Suitable for pumping of water to overhead tanks, in bungalows, fountains, car washing, lawn sprinklers etc.

## PERISTAR S



<b>Pump models</b>	3
<b>Capacity</b>	up to 3400 lph
<b>Head</b>	up to 36 mtrs.
<b>Temperature</b>	Ambient
<b>Motor rating</b>	up to 1 HP

Centrifugal pumps in monobloc construction. Self priming up to 8 m. Robust and sturdy design. Capacitor start and run type design eliminates centrifugal switch. Pressure die cast rotor with TEFC enclosure for motors.

Suitable for pumping of water to overhead tanks, in bungalows, fountains, car washing, lawn sprinklers etc.

## PERISTAR ZD



<b>Pump size</b>	25x25 mm
<b>Capacity</b>	up to 2950 lph
<b>Head</b>	up to 39 mtrs.
<b>Temperature</b>	Ambient
<b>Motor rating</b>	up to 1 HP

Centrifugal pumps in monobloc construction. Self priming up to 8 m. Capacitor start induction run single phase motor for high torque.

Suitable for car washing, booster application, water circulation in solar heating systems etc.

Pumps for **water supply, transport and treatment for industrial, municipal and building services applications**

## Product &amp; it's operating range

## Construction and applications

## OPAL



<b>Pump models</b>	OPAL 5 & 10
<b>Capacity</b>	up to 215 lpm
<b>Head</b>	up to 25 mtrs.
<b>Temperature</b>	Ambient
<b>Motor rating</b>	up to 1 HP

Open-well submersible pumpsets in monobloc construction  
Wide voltage range. SS jacketed motor with NORYL impellers.  
Suitable for pumping of water to overhead tanks, flood irrigation, de-watering of storm water etc.

## K-JET



<b>Pump sizes</b>	40 x 25 mm
<b>Capacity</b>	up to 41 lpm
<b>Head</b>	up to 45 mtrs.
<b>Temperature</b>	Ambient
<b>Motor rating</b>	up to 1 kW

Self priming centrifugal jet pumps designed for application in deep wells.

These pumps find wide applications in residential bungalows, hotels, small farms, lawns etc.

## PERIJET



<b>Pump sizes</b>	25 mm
<b>Capacity</b>	up to 55 lpm
<b>Head</b>	up to 39 mtrs.
<b>Temperature</b>	Ambient
<b>Motor rating</b>	up to 0.75 kW

Self priming centrifugal pumps designed for application in open and shallow wells, sumps.

These pumps find wide applications in residential bungalows, hotels, small farms, lawns etc.

## PERIBOOST



<b>Pump sizes</b>	25 mm
<b>Capacity</b>	up to 33 lpm
<b>Head</b>	up to 24 mtrs.
<b>Temperature</b>	65° C
<b>Motor rating</b>	up to 0.37 kW

Pressure booster pumps designed for pressurized water showers in bathrooms

## MULTIBOOST



<b>Tank Capacity</b>	24 & 60 ltr.
<b>Capacity</b>	up to 266 lpm
<b>Head</b>	up to 53 mtrs.
<b>Temperature</b>	Ambient
<b>Motor rating</b>	up to 2.2 kW (3 HP)

Horizontal, centrifugal, radially split, multistage pumps fitted with pressure tank, pressure sensor and gauge.

Suitable for water pressure boosting applications in bungalows, flats, individual bathrooms etc.



**Pumps for water supply, transport and treatment for industrial, municipal and building services applications**

**Product & it's operating range**

**Construction and applications**

**MONOSUB RV**



<b>Pump sizes</b>	75 mm
<b>Capacity</b>	up to 1500 lpm
<b>Head</b>	up to 148 mtrs.
<b>Temperature</b>	Ambient
<b>Motor rating</b>	1Ø up to 2 HP 3Ø up to 22.5 HP

Multistage monobloc openwell submersible pumpset. 1Ø in S.S. construction & 3Ø in C.I. construction.  
Suitable for agriculture, farm houses, drinking water supply etc.

**Conti**



<b>Cable Sizes</b>	1.5 Sq. mm 2.5 Sq. mm 4.0 Sq. mm 6.0 sq. mm 10.0 sq. mm 16.0 sq. mm 25.0 sq. mm 35.0 sq. mm
--------------------	--

CONTI - 3 core PVC insulated flat cables with superior quality and assured long life. Every cable is precisely manufactured with exceptional process control. The conductor is made of multiple strands of finely drawn copper wires having purity of minimum 99.9%. The cables are ISI 694 marked.

**GARDO**



<b>Size</b>	0.5 hp - 2 hp
-------------	---------------

Reliable control panels for single phase pumpsets. Control panels are designed for wide voltage operating range.

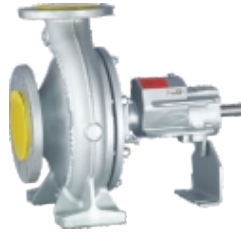


Pumps for **chemical, petrochemical, oil production, processing, steam & power generation**

## Product &amp; it's operating range

## Construction and applications

## Etanorm SYT



Pump Size	25 to 150 mm
Capacity	up to 625 m <sup>3</sup> /hr.
Head	up to 102 m
Discharge press.	up to 16 bar
Temperature	-30 to 350°C
Speed	up to 3600 rpm

Horizontal, end suction, centrifugal, radially split, volute casing process pumps in back-pull-out design, fitted with a radial impeller.

Suitable for heat transfer system, hot water circulation etc.

## MegaCPK



Pump Size	25 to 250 mm
Capacity	up to 1160 m <sup>3</sup> /hr.
Head	up to 162 m
Discharge press.	up to 25 bar
Temperature	-30 to 300°C
Speed	up to 2900 rpm

Horizontal, end suction, centrifugal, radially split, volute casing process pump in back-pull-out design, fitted with a radial impeller.

Suitable to handle aggressive, organic and inorganic fluids in chemical and process industries like paper, cellulose, sugar, food, textile, drugs, breweries, pharmaceutical and distilleries.

## HPK-L



Pump Size	25 to 250 mm
Capacity	up to 1160 m <sup>3</sup> /hr.
Head	up to 162 m
Discharge press.	up to 25 bar
Temperature	-40 to 400°C
Speed	up to 3600 rpm

Horizontal, end suction, centrifugal, radially split, volute casing process pumps in back-pull-out design, fitted with a radial impeller.

Suitable for hot water circulation, heat transfer fluids, process engineering etc.

## APP



Pump Size	32 to 150 mm
Capacity	up to 700 m <sup>3</sup> /hr.
Head	up to 100 m
Discharge press.	up to 16 bar
Temperature	-30 to 160°C
Speed	up to 3600 rpm

Horizontal, single stage, end suction, radially split volute casing pump in back-pull-out design.

Suitable for continuous operation in process industries to handle clean, abrasive corrosive liquids and stock up to **8% consistency**.

## CPK



Pump Size	32 to 250 mm
Capacity	up to 1200 m <sup>3</sup> /hr.
Head	up to 150 m
Discharge press.	up to 25 bar
Temperature	-70 to 350°C
Speed	up to 2900 rpm

Horizontal, end suction, centrifugal, radially split, volute casing process pumps in back-pull-out design, fitted with a radial impeller.

Suitable to handle aggressive organic and inorganic fluids in chemical and petrochemical industries, refinery off-sites, paper and pulp, food and sugar industry, sea water desalination plants.

BRAAMD, Inc.

Phase 5 B73 Lots 1-2 Rodeo Drive, Laguna Bel Air 2, Brgy. Don Jose, Santa Rosa City, Laguna Philippines 4026  
 TeleFax: +63 49 260 0975 • Mobile: +63 917 554 2310 • Email: sales@braamd.com • Website: www.braamd.com

Pumps for **chemical, petrochemical, oil production, processing, steam & power generation**

## Product &amp; it's operating range

## Construction and applications

## Etanorm C



Pump Size	25 to 150 mm
Capacity	up to 660 m <sup>3</sup> /hr.
Head	up to 160 m
Discharge press.	up to 16 bar
Temperature	-30 to 140°C
Speed	up to 3600 rpm

Horizontal, end suction, centrifugal, radially split, volute casing process pumps in back-pull-out design, fitted with a radial impeller.

Suitable for heat transfer system, hot water circulation, water supply and swimming pools, fire fighting systems etc.

## Etabloc C



Pump Size	25 to 150 mm
Capacity	up to 550 m <sup>3</sup> /hr.
Head	up to 160 m
Discharge press.	up to 16 bar
Temperature	-30 to 140°C
Motor rating	up to 22 kW

Single stage volute casing pump with back pull out design and ratings to EN 733, with radially split volute casing, replaceable wear rings, stub shaft design, closed radial impeller with multiple curved vanes, single mechanical seal to EN 12756, and a shaft equipped with replaceable shaft sleeve in seal area.

Suitable for Water supply, swimming pools, irrigation, cooling water, spray irrigation, service water, drinking water, condensate, hot water.

## Magnochem



Pump Size	25 to 100 mm
Capacity	up to 300 m <sup>3</sup> /hr.
Head	up to 150 m
Discharge press.	up to 25 bar
Temperature	-90 to 300°C
Speed	up to 2900 rpm

Horizontal, seal-less volute casing pump in back pull-out design, with magnetic drive, to ISO 2858 / EN 22 858 / ISO 5199, with radial impeller, single-stage, single-entry ATEX-compliant.

For handling aggressive, toxic, explosive, valuable, flammable, malodorous or harmful fluids in the chemical, petrochemical and general industries, chemical industry, petrochemical industry, refineries, food and beverage industries nuclear and fossil-fuelled power plants, general industry and process engineering.

## KWP O



Pump Size	5 models
Capacity	up to 400 m <sup>3</sup> /hr.
Head	up to 65 m
Discharge press.	up to 10 bar
Temperature	-30 to 250°C
Speed	up to 2900 rpm

Horizontal, single stage, single entry, back pull out type, radially split volute casing process type centrifugal pumps with radial flow non clogging, semi open multi vane, overhung impeller. Dimension complying to standardized chemical pumps in accordance with DIN 24546.

Can be used to pump contaminated fluids, sludge, fluids containing solids admixtures & thick stocks of all kinds. With O impeller, fluids containing air <= 5% & stock density of pulp <=5% can be pumped.

## CPK O



Pump Size	14 models
Capacity	up to 100 m <sup>3</sup> /hr.
Head	up to 85 m
Discharge press.	up to 16 / 25 bar
Temperature	-70 to 300°C
Speed	up to 2900 rpm

Horizontal, single stage, volute casing pump in back pull-out design, with semi open Impeller, single-entry, single-stage; to EN 22 858/ISO 2858/ISO 5199; Complemented by pumps of size DN 25.

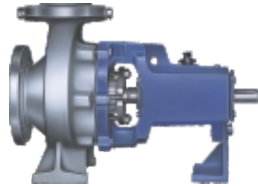
These pumps can be used to pump aggressive, polymerizing media or media liable to form lumps as well as gas containing liquids in the chemical and petrochemical industries.

Pumps for **chemical, petrochemical, oil production, processing, steam & power generation**

## Product &amp; it's operating range

## Construction and applications

## MEGACHEM



Pump Size	25 to 150 mm
Capacity	up to 540 m <sup>3</sup> /hr.
Head	up to 100 m
Discharge press.	up to 16 bar
Temperature	-30 to 200°C
Speed	up to 3600 rpm

Horizontal, end suction, centrifugal, radially split, volute casing process pump in back-pull-out design, fitted with a radial impeller. Suitable to handle aggressive, organic and inorganic fluids in chemical and process industries like paper, cellulose, sugar, food, textile, drugs, breweries, pharmaceutical and distilleries.

## RPH



Pump Size	25 to 250 mm
Capacity	up to 1500 m <sup>3</sup> /hr.
Head	up to 270 m
Discharge press.	up to 51 bar
Temperature	up to 450°C
Speed	up to 3600 rpm

Horizontal, single stage, radially split pump in back-pull-out design with end suction fitted with a single entry closed radial impeller. Designed to API 610 latest edition.

Suitable to handle products in refineries, chemical, petrochemical and coal conversion plants, power station and environmental engineering applications.

## RPHb



Pump Size	50, 80 & 150 mm
Capacity	up to 500 m <sup>3</sup> /hr.
Head	up to 420 m
Discharge press.	up to 100 bar
Temperature	-70 to 450°C
Speed	up to 3600 rpm

Horizontal, radially split, volute casing pump in process type construction according to API 610 latest edition / VDMA 24297, with radial flow impeller, single suction two stage design, back to back impeller arrangement and centreline mounting.

Suitable for handling various petroleum products.

## WKT, WKTR



Pump Size	40 to 150 mm
Capacity	up to 300 m <sup>3</sup> /hr.
Head	up to 500 m
Discharge press.	up to 63 bar
Temperature	-30 to 160°C
Speed	up to 3600 rpm

Vertical, radially split, multi-stage ring section pump with radial / mixed flow single entry impellers. WKTR pumps designed to API 610 latest edition.

Suitable for condensate extraction from steam turbines, handling cold or hot water, process liquids for refinery & petrochemical applications & ammonia handling

## WKTA, WKTB



Pump Size	up to 2500 mm
Capacity	up to 370 m <sup>3</sup> /hr.
Head	up to 40 m
Discharge press.	up to 100 bar
Temperature	up to 100°C
Speed	up to 1800 rpm

Vertical, can type, radially split, multi-stage ring section pump with double entry suction stage.

Suitable for condensate extraction in power stations and industrial power plants.

BRAAMD, Inc.

Phase 5 B73 Lots 1-2 Rodeo Drive, Laguna Bel Air 2, Brgy. Don Jose, Santa Rosa City, Laguna Philippines 4026  
 TeleFax: +63 49 260 0975 • Mobile: +63 917 554 2310 • Email: sales@braamd.com • Website: www.braamd.com



Pumps for **chemical, petrochemical, oil production, processing, steam & power generation**

## Product &amp; it's operating range

## Construction and applications

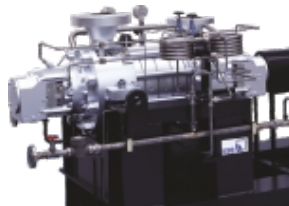
## HDA, HDB



<b>Pump Size</b>	42 to 150 mm
<b>Capacity</b>	up to 576 m <sup>3</sup> /hr.
<b>Head</b>	up to 2245 mtrs.
<b>Pressure</b>	up to 230 bar
<b>Temperature</b>	up to 200°C
<b>Speed</b>	up to 5500 rpm

Horizontal, high pressure multi-stage pumps with ring section casing and radial single entry impellers.  
Suitable for boiler-feed applications and in high pressure hydraulic circuits for coke cutting, descaling and municipal water supply.

## HG



<b>Pump Size</b>	2 to 5
<b>Capacity</b>	up to 1400 m <sup>3</sup> /hr.
<b>Head</b>	up to 4200 m
<b>Discharge press.</b>	up to 420 bar
<b>Temperature</b>	up to 200°C
<b>Speed</b>	up to 7000 rpm

Horizontal, multi-stage, centrifugal pump in ring section design with single or double entry radial impellers.  
Suitable for boiler-feed water for captive and combined cycle co-generation power plants.

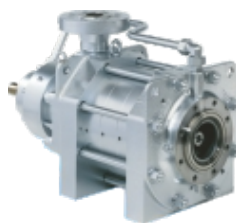
## CHTC, CHTR



<b>Pump Size</b>	2 to 6
<b>Capacity</b>	up to 1450 m <sup>3</sup> /hr.
<b>Head</b>	up to 4200 m
<b>Discharge press.</b>	up to 420 bar
<b>Temperature</b>	up to 200°C
<b>Speed</b>	up to 7000 rpm

Horizontal, multi-stage, centrifugal barrel casing pump in ring section design with radial impeller, single or double entry.  
Suitable for boiler-feed water for captive and combined cycle co-generation power plants. CHTR pumps are adapted to API 610 latest edition requirements to handle hydrocarbons.

## HGM



<b>Pump Size</b>	2 to 4
<b>Capacity</b>	up to 280 m <sup>3</sup> /hr.
<b>Head</b>	up to 1100 m
<b>Discharge press.</b>	up to 120 bar
<b>Temperature</b>	up to 140°C
<b>Speed</b>	up to 3600 rpm

Horizontal, multi-stage, centrifugal pump in ring section design with medium lubricated plain bearings.  
Suitable for boiler-feed duties and condensate transport in power stations and industrial boilers.

Pumps for **chemical, petrochemical, oil production, processing, steam & power generation**

## Product &amp; it's operating range

## SPnorm



<b>Size</b>	DN 40, 50, 80, 100, 150
<b>Capacity</b>	19.4 lps.
<b>Head</b>	6 to 36 mtrs.
<b>Motor rating</b>	1 to 25 HP

## Construction and applications

Horizontal self priming volute casing pumps, single stage with semi open impeller, in back pull out design. Long coupled on baseplate, suction lift up to 7 metres.

Suitable pump for pumping muddy water, sewage, polluted liquids including solids etc.

Applications where priming & foot valve is to be avoided.

## SPbloc



<b>Size</b>	DN 40, 50, 80
<b>Capacity</b>	74 lps.
<b>Head</b>	6 to 50 mtrs.
<b>Motor rating</b>	1 to 7.5 HP

Horizontal self priming volute casing pumps, single stage with semi open impeller, in back pull out design. Monobloc, mono shaft design, hydraulics are assembled on extended motor shaft, suction lift up to 7 metres.

Suitable pump for pumping muddy water, sewage, polluted liquids including solids etc.

Applications where priming & foot valve is to be avoided.



## Valves for chemical, petrochemical, oil production, processing, steam and power generation

## Product &amp; it's operating range

## Construction and applications

## SICCA® 800-1500 - Type GTF



Size	15 to 50 mm
Pressure	up to 264 bar
Temperature	up to 593°C

**Forged gate valve** to API 602 (# 800/1500), bolted bonnet for # 800, welded bonnet for # 1500, socket weld ends for # 800-1500, socket / thread ends for # 800, solid wedge, integral back seat and non-rotating stem.

Available in Carbon Steel, Stainless Steel & Alloy Steel.

## SICCA® 150-600 - Type GTC



Size	50 to 600 mm
Pressure	up to 104 bar
Temperature	up to 593°C

**Cast gate valve** to API 600, bolted bonnet, butt weld or flanged ends, flexible wedge, out-side screw and yoke and non-rotating stem.

Available in Carbon Steel, Stainless Steel & Alloy Steel

## SICCA® 900-2500 - Type GTC



Size	50 to 600 mm
Pressure	up to 431 bar
Temperature	up to 650°C

**Cast gate valve** to ASME B 16.34, pressure seal bonnet, double disc wedge design, butt weld ends, integral stellite back seat, out-side screw and yoke and non-rotating stem.

Available in Carbon & Alloy Steel.

## SICCA® 800-2500 - Type GLF



Size	15 to 50 mm
Pressure	up to 431 bar
Temperature	up to 650°C

**Forged globe valve** to API 602 (# 800/1500), ASME B 16.34 (# 2500), bolted bonnet for # 800, welded bonnet for # 1500/2500, socket weld ends for # 800-2500, socket / thread ends for # 800, integral back seat, outside screw and yoke and rotating stem.

Available in Carbon Steel, Stainless Steel & Alloy Steel

## SICCA® 150-600 - Type GLC



Size	50 to 250 mm
Pressure	up to 104 bar
Temperature	up to 593°C

**Cast globe valve** to BS 1873, bolted bonnet, flanged or butt weld ends, back seat bush and out-side screw and yoke.

Available in Carbon, Alloy & Stainless Steel.

## Valves for chemical, petrochemical, oil production, processing, steam and power generation

## Product &amp; it's operating range

## Construction and applications

## SICCA® 900-2500 - Type GLC



Size	50 to 200 mm
Pressure	up to 431 bar
Temperature	up to 650°C

**Cast globe valve** to ASME B 16.34, pressure seal bonnet design, butt weld ends, tapered seat, integral stellited back seat, outside screw and yoke, yoke head with ISO flange for actuator fitting, non-rotating stem and Y-pattern body design.

Available in Carbon & Alloy Steel.

## SICCA® 800-2500 - Type PCF



Size	15 to 50 mm
Pressure	up to 431 bar
Temperature	up to 650°C

**Forged check valve** to API 602 (# 800/1500), ASME B 16.34 (# 2500), bolted cover for # 800, welded cover for # 1500/2500, socket weld ends for # 800-2500, socket / thread ends for # 800, spring loaded disc.

Available in Carbon Steel, Stainless Steel & Alloy Steel.

## SICCA® 150-600 - Type SCC



Size	50 to 600 mm
Pressure	up to 104 bar
Temperature	up to 593°C

**Cast check valve** as per BS 1868, bolted bonnet, flanged or butt weld ends, swing disc arrangement with inside hinge pin (up to 300 mm) and non-turning disc.

Available in Carbon, Alloy & Stainless Steel.

## SICCA® 900-2500 - Type SCC



Size	50 to 600 mm
Pressure	up to 431 bar
Temperature	up to 650°C

**Cast check valve** as per ASME B 16.34, pressure seal bonnet design, butt weld ends, swing disc arrangement with inside hinge pin and non-turning disc.

Available in Carbon & Alloy Steel.

## Ball Valves - ECOLINE



Size	15 to 400 mm
Pressure	up to 136 bar
Temperature	up to 200°C

**ECOLINE range of Cast & Forged, 1, 2 & 3 piece construction ball valves.** Designed as per BS EN ISO 17292 and are available up to class 800.

Suitable for process, industry, water, steam, oil & gas applications.