

# 14,500 sq.ft. For Lease

## 12400 Universal Dr. 48180

Listing ID:  
 Status: Active  
 Property Type: Industrial For Lease  
 Industrial Type: Flex Space, Industrial-Business Park  
 Contiguous Space: 14,500 SF  
 Total Available: 14,500 SF  
 Lease Rate: Call  
 Lease Type: Modified Gross  
 Ceiling: 16 - 18 ft.  
 Office SF: 2,500 SF  
 Drive-In Bays: 1 Bay



### Overview/Comments

14,500 sq.ft. of light industrial available in Metro-Telegraph Industrial Park. Call Rea Construction for a showing at 734-946-8730.

### More Information Online Virtual Tour

<https://view.ricohtours.com/>

ac237b5a-6f1d-42ce-

a930-748938aab8d6/



### General Information

Tax ID Number/APN: 263960770  
 Zoning: LIGHT INDUSTRIAL  
 Land Area: 1.5Acres

Industrial Type Flex Space, Industrial-Business Park, Manufacturing, Mixed Use, Light Industrial, Office Showroom, Self Storage, Warehouse/Distribution

### Available Space

Suite/Unit Number:	1	Conference Rooms:	1
Space Available:	14,500 SF	Offices:	2
Minimum Divisible:		Office SF:	2500 SF
Maximum Contiguous:	14,500 sF	Parking Spaces:	20
Space Type:	Relet	Loading Docks:	1
Date Available:	07/01/2020	Loading Doors:	1
Lease Rate:	Call Us	Drive In Bays:	1
Lease Type:	Modified Gross	Ceiling Height:	20
Rent Escalators:	Fixed Lease	Clear Height:	18

### Area & Location

Property Located Between: Telegraph and Beech Da;ly  
Detroit Metropolitan Airport

Highway Access:  
Airports:

### Building Related

Tenancy:	Single	Year Renovated:	1999
Total Number of Buildings:	1	Roof Type:	Flat
Number of Stories:	1	Construction/Siding:	Brick
Office Space SF:	12500 SF	Parking Type:	Surface
Property Condition:	Good	Total Parking Spaces:	20
Year Built:	1988	Passenger Elevators:	0

Freight Elevators:	0	Heat Type:	Natural Gas
Sprinklers:	Wet	Lighting:	Metal Halide
X-Phase:	3	Internet Access:	Cable

**Land Related**

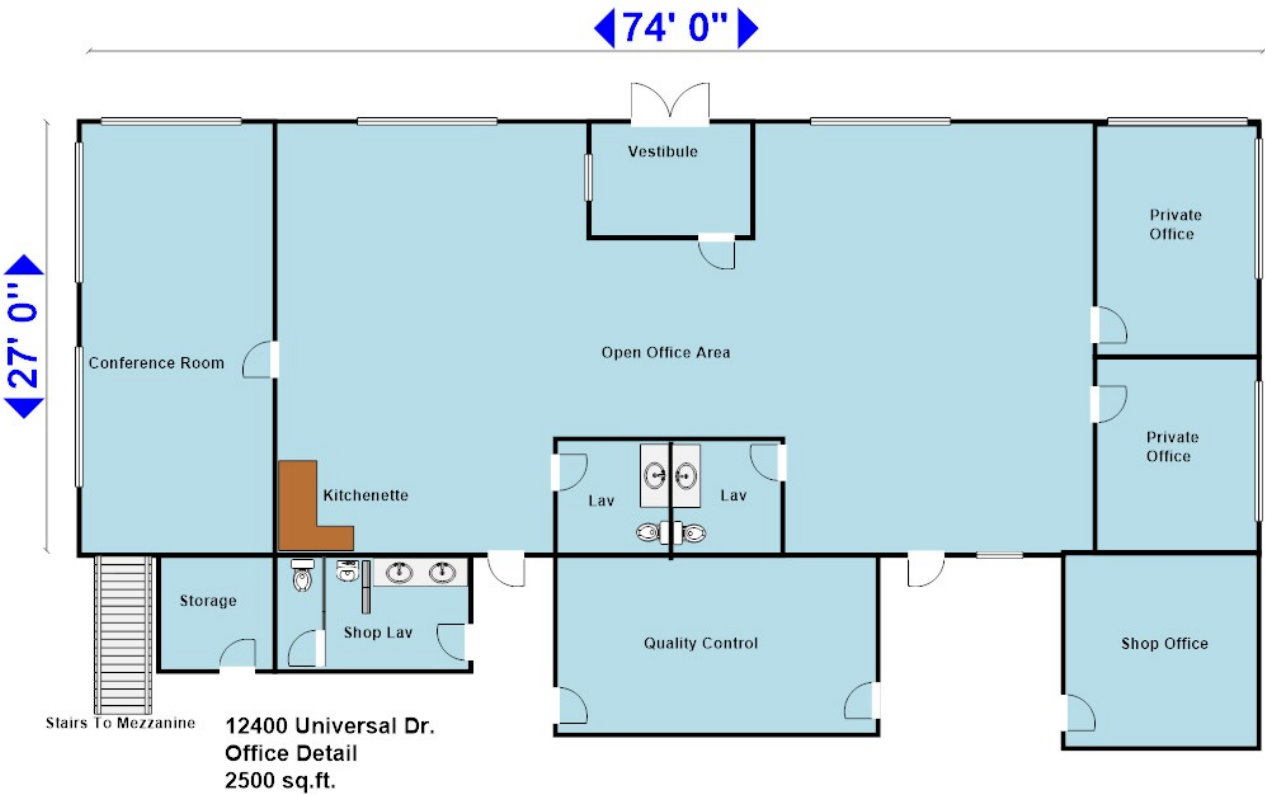
Water Service:	Municipal
Sewer Type:	Municipal

**Location**

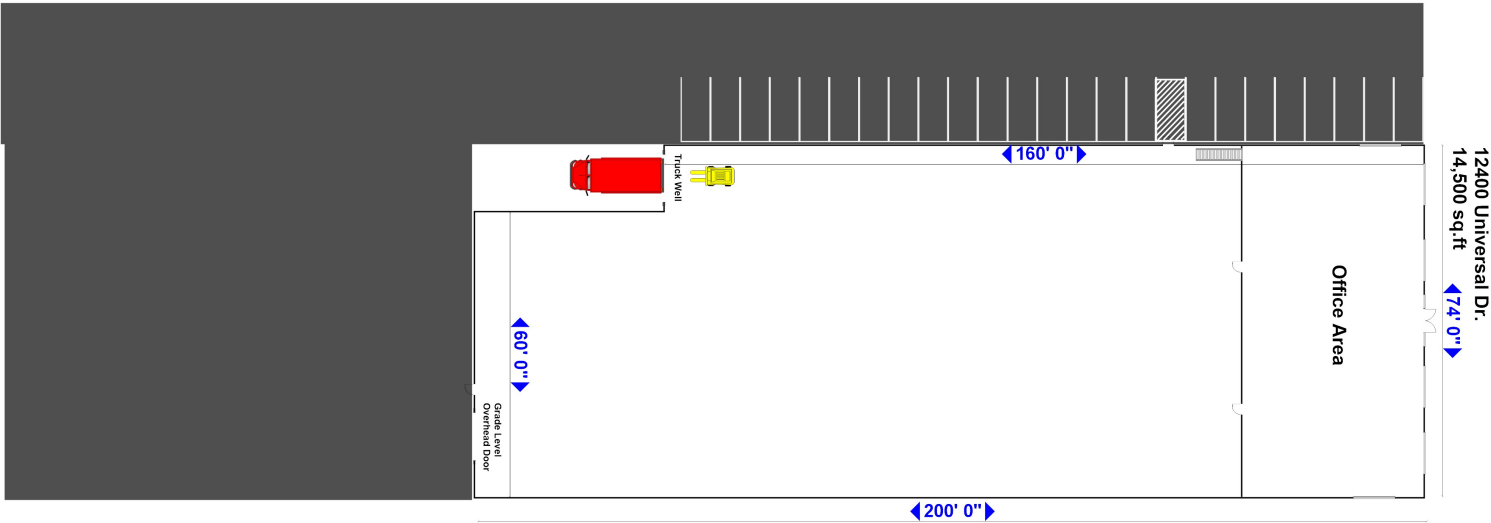
Address:	12400 Universal Dr. Taylor	MSA:	Detroit-Warren-Dearborn
County:	Mi.	Submarket:	Southern I-275 Corridor



**Property Images**



12400 Universal Dr.  
Office Detail  
2500 sq.ft.



Property Contacts



**Yvon Rea**  
Rea Construction  
734-946-8730 [0]  
reaconstruction@reaconstruction.net