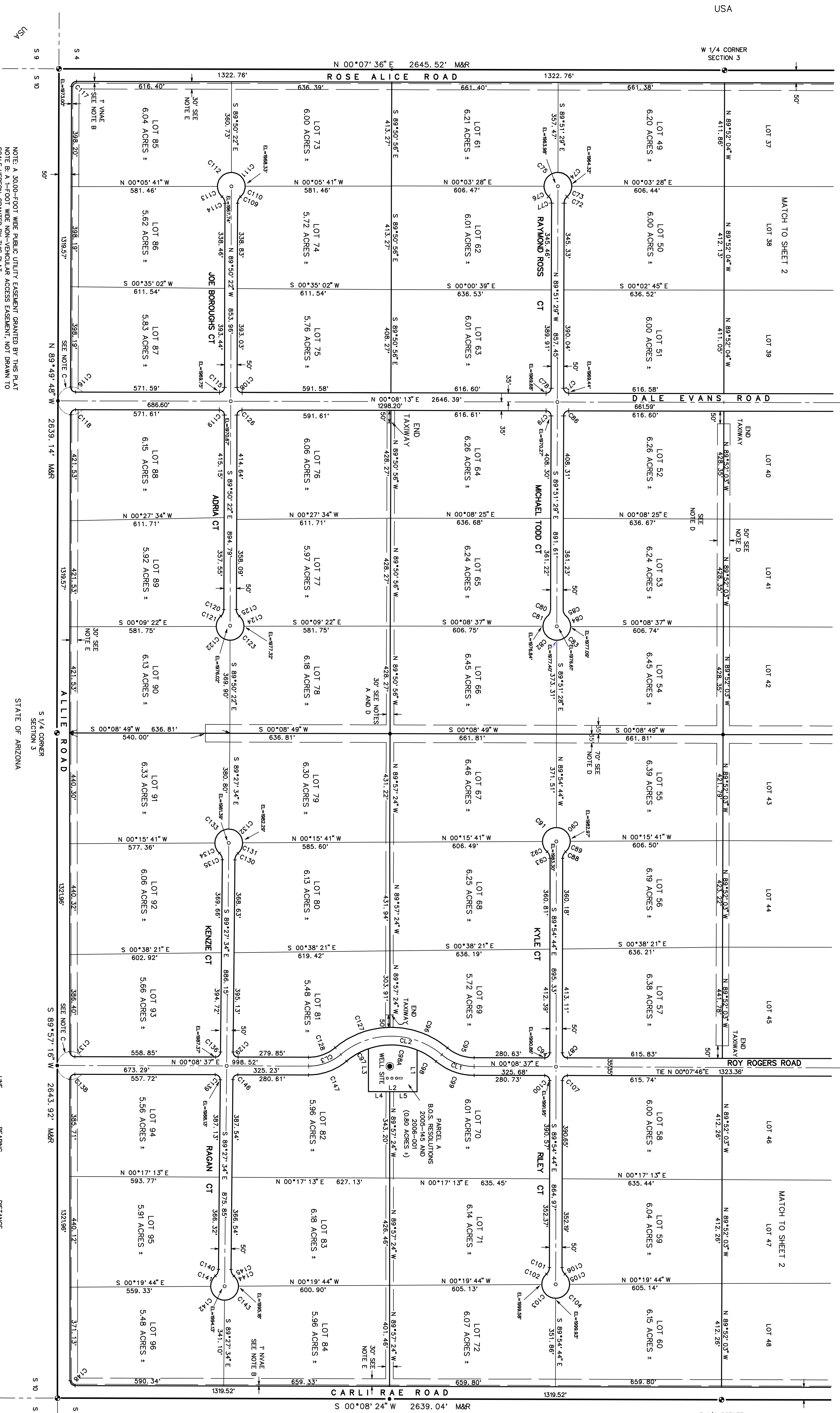


FIRST AMENDED FINAL PLAT
SAGEBRUSH TRAILS ESTATES, TRACT 3815, SITUATE IN SECTION 3, TOWNSHIP 14 NORTH, RANGE 17 WEST OF THE
GILA AND SALT RIVER MERIDIAN, MOHAVE COUNTY, ARIZONA

ANDY CT
BARRETT CT

CHAPMAN CT
ALEX CT



USA
W 1/4 CORNER SECTION 3

USA
E 1/4 CORNER SECTION 3

NOTE: A 3000'-FOOT WIDE PUBLIC UTILITY EASEMENT GRANTED BY THIS PLAT
 NOTE B: A 1-FOOT WIDE NON-VEHICULAR ACCESS EASEMENT, NOT DRAWN TO SCALE HEREON, COVERED BY THIS PLAT, IS INTENDED TO BE ABANDONED WITH NO FURTHER ACTION ON COMPLETION OF CONSTRUCTION OF ALLE ROAD AS DEDICATED BY THIS PLAT.
 ROADWAYS ADJACENT TO THE EAST, SOUTH AND WEST SECTION LINES DEDICATED HEREIN AT A WIDTH OF 50 FEET.
 THE INTERIOR EAST-WEST ROADWAYS DEDICATED HEREIN AT A WIDTH OF 70 FEET.
 ALL ROAD WIDTHS PER MOHAVE COUNTY DEPARTMENT OF PUBLIC WORKS

NOTE D: A 70'-FOOT WIDE RUNWAY EASEMENT AND 50'-FOOT WIDE TAXIWAY EASEMENTS AS SHOWN HEREON AND APPROVED BY THE MOHAVE COUNTY BOARD OF SUPERVISORS ON NOVEMBER 3, 2008, B.O.S. RESOLUTION 2008-348 GRANTED BY THIS PLAT.
 NOTE E: A 30'-FOOT WIDE UTILITY EASEMENT AS SHOWN HEREON, GRANTED BY THIS PLAT

LINE	BEARING	DISTANCE
L 1	S 89°57'24"E	165.93'
L 2	S 00°08'37"W	193.66'
L 3	N 89°57'24"W	170.18'
L 4	N 00°08'37"E	85.00'
L 5	N 00°08'37"E	108.66'

JOB NO. 1976-03
 PREPARED BY: JOWELL
 FOR: LORIE HAVASU CITY, AZ 86404
 528-764-2306
 DRAWN BY: Jd
 DATE: DEC 2008
 SHEET 3 OF 4

CARLTON SONS-NIELSON ASSOCIATES
 511 EAST ANDY DEVINE (P.O. BOX 110)
 KINGMAN, ARIZONA 86401 (928) 753-6647

