



## *Little Miss Beaver County:*

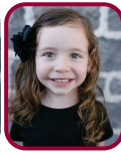
**Teeny Miss:** (ages 3-4)

Saylor Christiansen



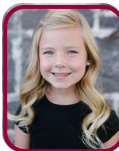
### **Attendants:**

Tenzlyn Olsen  
Hinklee Blackner  
Adelita Davis



**Petite Miss:** (ages 5-6)

Gracie Lofland



### **Attendants:**

E.V. Yardley  
Locklyn Miller



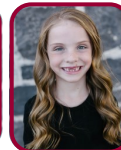
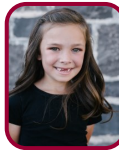
**Little Miss:** (ages 7-9)

Janessa Paice



### **Attendants:**

Jaylee Hollingshead  
Elizabeth Woolf  
Ayslee Laws



**Junior Miss:** (ages 10-13)

Kyzie Fails



### **Attendants:**

Kaisey Barney  
Ava Moffett  
Jaeley Smith



## *Miss Beaver County Royalty:*



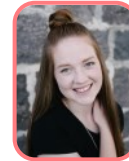
**Queen:**

Brailee Robinson



### **Attendants:**

Kya Christiansen  
Amy Webb



## *Miss Beaver County Outstanding Teen:*

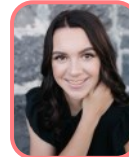
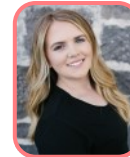
**Outstanding Teen:**

Carley Black



### **Attendants:**

Pazley Bradshaw  
Emrie Robinson  
Alexa Walker



## *Rodeo Royalty*



**Queen:**

Dani Weldert

**Attendant:**

Brailee Robinson

**Princess:**

Lissa Bradshaw



### *Jr. Princess:*

Justice Wright

**Attendant:**

Taylee Ashworth  
Oaklee Schmid





# COUNTRY NIGHTS CARNIVAL LIGHTS BEAVER COUNTY FAIR

2019

Visit us @ [www.beavercountyfair.com](http://www.beavercountyfair.com)

## Wednesday, August 21

### Jr. Britches Rodeo

RODEO STARTS @ 5:00 PM

SIGN-UP @ FAIR 3:00 PM OR

PREREGISTER @ <http://www.beavercountyfair.com/>

For information on participating in the rodeo, contact  
Jennifer Marshall @ 386-2505 or Linda Noyes @ 691-2575

### Sportsmen for Fish and Wildlife

Fishing Starts @ 3:00 (for under 18 yrs. old)

The pond will be stocked with fish SFW. There will be a  
couple of prizes for fish and a raffle including a gun.

FUNDRAISER DINNER @

5:00-7:30 PM

**SMOKED PORK LOIN**  
Smithfield \$10 for anyone over 12yrs. Old  
Good food. Responsible! \$6 for kids under 12yrs. old

Proceeds from Dinner will be  
used for Special Hunts for  
Beaver County Youth

### Beaver County's Got Talent

6:00 pm

## Thursday, August 22

### MOTOCROSS

SHOW 7:00 PM

\$5 per person  
All fair patrons must pay after  
5:00 p.m. age 5 and under free

START

CARNIVAL  
MIDWAY  
ATTRACTIONS

## Saturday, August 24

## Friday, August 23

### BROKEN HEART RODEO

7:00 PM

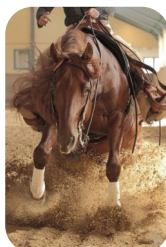
\$20.00 per family, \$5 single, under 5 free

All fair patrons must pay after 5:00 PM

Open Entries August 16th 12:00 pm - 6:00 pm

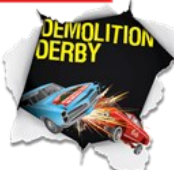
Call Backs August 17th 2:00 pm - 6:00 pm

Call : 719-564-7465



Tunes  
Mobile  
Music

Meet in the Middle Dance  
& Late Night Carnival



For entry information, call Brent Hardy  
@ (435) 209-0188

7:00pm - \$5 a Person

All Fair Patrons Must Pay After 5:00 PM  
Ages 5 and under are Free



DANCE & CONCERT  
9:00-11:30 pm



Muddy Boots Concert/Dance  
After Demolition Derby -11:30







# 2019 Beaver County Fair Grand Marshal Don & Linda Noyes



Don and Linda met at Utah State University.

Linda said she was never going to marry a farmer, especially a dairy farmer. That was before she met the love of her life, and then it didn't matter what he did they both knew they had met the person they wanted to spend eternity with. They have been married 51 years.

They graduated from Utah State University. Don in was the last draft call of the year in 1970 with the US Army. Natalie was a baby and they were expecting their 2<sup>nd</sup> child, Mark. Don went to Vietnam, Linda moved home with her family.

After the army, they moved to Lewiston, Utah where they bought a dairy farm.

The dairy farm was a great place to raise a family. They had 7 children, the kids learned the importance of working and helping each other. They lived in Reno, Nevada, then back to Loa, Utah, and Fillmore, Utah. Their slogan was "Have cows, will travel". They moved their cows to the different places they lived in.

21 years ago they moved to Milford to work at Circle 4 Farms. Don was a farm leader and Linda worked 3 years on the farms, then worked in the office 10 years. Don retired 2 years ago. Don enjoys working with his horses and goats. He likes to garden and share his produce with others.

Linda is an insurance agent with Farm Bureau Financial Services. She loves working with people and helping protect what is important to them.

They have been on the Beaver County Fair board for many years and were the fair chairman 3 years. They are very involved with the Utah State Farm Bureau Federation both holding county and state positions.

They enjoy working with people, being involved in public events and helping others.

They have 7 children 27 grandchildren, and 6 great grandchildren, who they enjoy following in their activities across the state and the nation. Family is the most important part of their lives.

Natalie & Ralph Perkins, Mark Noyes, Frank & Amber Noyes, Nathan & Natalie Noyes, Rebekah & Sherri Noyes, Ben & Jamie Noyes, Joe & Car Noyes.

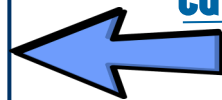
Don & Linda wish to thank the Beaver County Fair Board for the honor to be selected as this year's Grand Marshalls.

## Canning Label

Required for all  
canned entries

Product: \_\_\_\_\_  
Method: \_\_\_\_\_ Water Bath \_\_\_\_\_ Pressure  
Pack: \_\_\_\_\_ Hot \_\_\_\_\_ Raw  
Length of Processing Time: \_\_\_\_\_  
Pounds (if pressured): \_\_\_\_\_ Altitude: \_\_\_\_\_  
Date/Year dial gauge was last tested: \_\_\_\_\_  
Processing Date: \_\_\_\_\_ City: \_\_\_\_\_  
Source of Recipe: \_\_\_\_\_

## Cut and Attach Label:



Please cut out label and attach  
to all food preservation entries.



## Volleyball tournament



\* **Women**, ages 9th Grade & Up,

Wednesday - 21nd, Register 4:30 - Play 5:00

\* **Co-ed** - ages 9th Grade & Up

"Up in the Night" Friday 23rd 9:00 PM

\$10 registration fee/per person by August 14th or

\$15 the day of tournament

contact Heidi Olsen @ 421-9143





# Beaver County 4-H Exhibit Rules



## 4-H Exhibit Rules

The following rules and regulations shall apply to all sections in the 4-H Department. Any questions regarding any of the rules should be directed to the county extension office.

1) 4-H members must have been in the 3<sup>rd</sup> through the 12<sup>th</sup> grade by October 1, 2018.



2) All 4-H members must be currently enrolled in Utah 4-H.

3) Cloverbud 4-H members in K-2 grades as of October 1, 2018 may enter items to exhibit. These items will be displayed and receive premiums as other 4-H exhibits but will not be judged or eligible for the Utah State Fair.

4) All items must be a product of a registered 4-H club, activity or event within the current year of October 1, 2018 to October 1, 2019. **No school or church items will be accepted**; (all non 4-H club items, such as school and church projects may be entered in open class).

5) 4-H members will be allowed an unlimited number of total entries. They can enter more than one exhibit per class, but only up to two exhibits per lot within the same class. 4-H exhibits will be judged on quality of work and will be based on the individual merits of the exhibit. Premium money will be awarded to each blue, red and rosette ribbons. A blue ribbon=\$3.00, a red ribbon=\$2.00, a grand champion=\$15.00, and a reserved champion or judges choice=\$10.00. There is a \$40.00 maximum on premium money awarded. Rosette awards are not included in the \$40.00 cap. Premium money can be picked up on Friday August 23 or Saturday August 24.

6) Food items need to be of a quality to keep without refrigeration for the duration of the fair. Place all food items on a sturdy white paper plate and covered with plastic wrap. Large items, such as cakes, may be placed on a foil covered piece of heavy cardboard and covered with plastic wrap. All food items must include a recipe.



7) Food Preservation: Only products of home kitchens are eligible. All entries must be in clean, standard canning jars with new, single use, two piece lids and rings. A one quart or pint jar constitutes an exhibit for fruit, vegetables or meat. One pint or half pint jar constitutes an exhibit for jellies and jams. All jars must be labeled with name of product, method (water bath or pressure), pack (hot or raw), length of processing time, pounds of pressure, altitude, date, city, and recipe source.

8) 4-H Exhibit items can be picked up on Saturday August 24 between 9:00 and 10:30 pm. Items not picked up Saturday night will be taken to the Extension Office in Beaver.



9) Top 4-H exhibits, as selected by the judges, will be sent to the Utah State Fair where they will represent Beaver County and be judged again. State Fair entries are showcased and awarded at the annual Beaver County 4-H Achievement Night in October.



### Beaver County EXTENSION UtahStateUniversity



Remember that as you safely can foods, local elevations are:



Beaver - 5,902 feet  
Manderfield - 6,148 feet  
Greenville - 5,666 feet  
Adamsville - 5,528 feet

Minersville - 5,282 feet  
Milford - 4,967 feet  
North Creek - 6,594 feet

Boiling - Water Canner  
Altitude Adjustment

Pressure Canner  
Altitude Adjustment

Altitude (ft)	add to processing Time
3,001-6,000	10 minutes
6,001-8,000	15 minutes

Altitude (ft)	Weighted Gauge	Dial Gauge
4,001-6,000	15	13
6,000-8,000	15	14

Specific food processing guidelines can be found at  
[nchfp.uga.edu](http://nchfp.uga.edu)  
Or in the Ball Blue Book

UtahState  
UNIVERSITY

BEAVER CO.  
extension









# FAIR SCHEDULE

## Country Nights & Carnival Lights

### Beaver County Fair 2019



#### Monday, August 12

4-H Entries Accepted - 4:00-7:00 pm

#### Saturday, August 17

4-H Horse Show - 5:00 pm

#### Tuesday, August 20

Entries Accepted- 12:00-8:00pm

#### Wednesday, August 21

Produce & Flower Entry - 8:00-11:00

Judging of Exhibits - Building Closed

SFW Fishing Derby (free) 3:00-7:00

Junior Britches sign-up 3:00

Junior Britches Rodeo 5:00

Women's Volleyball 5:00

SFW Fundraiser Dinner 5:00-7:30

Talent Show ages 3-12 6:00

Talent Show ages 13-18 7:00

#### Thursday, August 22

"Senior Citizen Day"

Exhibits open (Seniors Only) 12:00-1:00

Senior Bingo 1:00

Grand Opening 2:45

Senior Dinner 3:00

Exhibits open to Public 5:00-7:00

Motocross Show 7:00

Motocross Autograph Party 8:30  
(after show)

Carnival Hours 4:00-9:00

#### Friday, August 23

Elementary Field Trips 8:00-1:00

Exhibits Open 1:00-7:30

Photo Booth 2:00-6:00

Craft with Princess 2:00

Tea Party/Story Time 3:00

Art's Museum project 2:00-4:00

Scrapbook Challenge 2:00-4:00

4-H Rocket Build 4:00

4-H Rocket Shoot 5:00

Royalty Talent 6:00

Broken Heart Rodeo 7:00

Up in the Night Coed Volleyball 9:00

Tunes Mobile Music Dance 9:30

Carnival Hours 4:00-11:00

#### Saturday, August 24

Exhibits open 10:00-6:00

Carnival Hours 12:00pm-11:00pm

4-H Steer Show 9:00

Baby Contest 10:00

4-H Lamb Show 10:30

4-H Goat Show 1:00

Diggin' for Cash 1:30

Foam Machine 2:00

Open Goat Show 2:00

Photo Booth 2:00-6:00

Derby Inspection 2:00-6:00

Pet Show 2:30

Cotton Candy Eating Contest 3:00

Poultry Show 3:00

Rabbit Show 3:30

Who Owns These Legs? 4:00

Fair Food \$ense Snacks 4:00

Carmel Apple Eating Contest 4:30

Let's Make a Deal 5:00

Demolition Derby 7:00

Muddy Boots Concert/Dance 9:00-11:30

Pick-up Exhibits 9:00-10:00

Fireworks After Derby

#### Monday, August 26

Pick up at Fair Building  
9:00 am-11:00 am

#### Let's Make a Deal!!!



Saturday @ 5:00

#### Photo Booth

Friday & Saturday

August 23 & 24

2:00 - 6:00 PM

This is provided by Smithfield and is FREE.

A little souvenir to help you remember  
the fair will be given.



#### Beaver County's Got Talent

Wednesday August 21st

Ages 3-12 6:00 pm

Ages 13-18 7:00 pm

Contact  
Trisa Harris  
421-1112



#### Scrapbook Challenge:

Use our supplies & your creativity to  
make a scrapbook page.

Friday @ 2:00-4:00 pm - Prizes

Contact Kathy Casparian 438-3168



#### Kid Contests

##### Friday, August 23rd:

4-H Rocket Build - 4:00

4-H Rocket Shoot - 5:00

##### Saturday, August 24th:

Diggin for Cash - 1:30

Cotton Candy Eating Contest- 3:00

Who Owns These Legs? - 4:00

Carmel Apple Eating Contest 4:30

#### Senior Day:

Join us for great food  
and great fun!

Thursday BINGO

Bingo - 1:00

Dinner - 3:00



Utah Division of  
Arts & Museums

Friday - Aug. 23rd

2:00-4:00

Come do an art project

\* all ages welcome \*







## General Rules for Exhibit Open Class:

- 1) Exhibitors may enter only two items in each class per person.
- 2) An entry form must be completely filled out for all entries.
- 3) All items must be produced or prepared within the current fair year (August 2018-August 2019)
- 4) Entries are limited to Beaver County residents. Non-residents may enter items as display only.
- 5) The Beaver County Fair Board will not be responsible for any lost, stolen, or damaged items. All reasonable means will be taken to prevent loss or damage.
- 6) All items will be received from 12:00pm to 8:00pm on Tuesday, August 20, at the Fairgrounds, with the exception of produce and flower entries, which will be accepted on Wednesday, August 21 from 8:00am-11:00am.
- 7) Judging of entries will be on Wednesday, August 21st
- 8) The exhibit building will be open on Thursday, August 22nd from 5:00pm-7:00pm, Friday, August 23rd from 1:00pm-7:00pm, and Saturday, August 24th from 10:00am-7:00pm
- 9) Exhibits will be judged and ribbons awarded in blue or red ribbons. Cash premiums of \$3.00 for blue ribbons and \$2.00 for red ribbons will be awarded.
- 10) Rosette ribbons will be awarded \$15.00 for Grand Champion, and \$10 for Reserve Champion or Judges Choice. There is a \$40.00 maximum on premium money awarded for open class exhibits, excluding rosette premiums. All items not claimed will become the property of the Beaver County Fair Board.

### Divisions:

**Professional** (those making at least half of their livelihood by producing and selling for profit items entered in the fair)

**Adult** (18 years of age and older) **Junior** (5-17 years of age)

### DIVISION A: Sewing

- |                         |                              |
|-------------------------|------------------------------|
| Class 1: Women's Casual | Class 6: Children's          |
| Class 2: Women's Formal | Class 7: Fashion Accessories |
| Class 3: Men's Casual   | Class 8: Tied Blankets       |
| Class 4: Men's Formal   | Class 9: Miscellaneous       |
| Class 5: Baby           |                              |



### DIVISION B: Needlework

- |                                                  |                           |
|--------------------------------------------------|---------------------------|
| Class 1: Pillowcases                             | Class 7: Tatting          |
| Class 2: Dish Towels                             | Class 8: Afghans          |
| Class 3: Doilies                                 | Class 9: Plastic Canvas   |
| Class 4: Tablecloths                             | Class 10: Crocheted Items |
| Class 5: Knitted or Crocheted Clothing           | Class 10: Miscellaneous   |
| Class 6: Pictures & Wall Hangings (Cross-stitch) |                           |



### DIVISION C: Food and Baked Goods



Food exhibits must be entered on a plastic or sturdy paper plate and covered with a zip-lock plastic bag. Large items, such as cakes, may be placed on a foil covered piece of heavy cardboard and covered with plastic wrap. Canning jars should be labeled with date canned and name of contents.

- Class 1: Breads (Bread (1 loaf), Rolls (4), Biscuits (4), Muffins (4))  
 Class 2: Cookies (4)  
 Class 3: Cakes  
 Class 4: Pies  
 Class 5: Candy (4 pieces)  
 Class 6: Jams, Preserves, Jellies  
 Class 7: Canned Foods (See Label)



### DIVISION D: Arts and Crafts

- |                         |                         |
|-------------------------|-------------------------|
| Class 1: Ceramics       | Class 10: Leather       |
| Class 2: Clay (Pottery) | Class 11: Wood          |
| Class 3: Sculpture      | Class 12: Plastic       |
| Class 4: Metal Work     | Class 13: Tole Painting |
| Class 5: Fiber          | Class 14: Dolls & Toys  |
| Class 6: Marble & Tile  | Class 15: Holiday Items |
| Class 7: Glass Work     | Class 16: Scrapbooking  |
| Class 8: Jewelry        | Class 17: Miscellaneous |
| Class 9: Beadwork       |                         |



### DIVISION E: Quilts

Quilts need to be new, clean, no loose threads, or animal hairs.  
 County Fair Quilt classes

- Class 1: Large Quilt (perimeter 300" or greater)  
 Class 2: Small quilt (perimeter at least 120" and less than 300")  
 Class 3: Small wall hanging (perimeter less than 120")  
 Class 4: Art quilts (Original design, non traditional pattern)  
 Class 5: Applique Quilt  
 Class 6: Challenge Quilt



# Open Class Exhibit Rules Continued

## DIVISION F: Paintings

All paintings must be SECURELY framed with screw eyes and wires, not strings or cords. The maximum size limit for all paintings is not to exceed 72 inches in its largest dimension, including the frame.

**Class 1:** Graphic Arts (pencil & ink, etchings, block printing, lithograph, collage)

**Class 2:** Oil Painting and Acrylic

**Class 3:** Watercolor, Tempera, Casein

**Class 4:** Pastels



## DIVISION G: Photography

Photographs will be judged in two categories: 1) Film/Digital w/ minimal manipulation and 2) Graphic/Digital with heavy manipulation. All photos must be ready for hanging. There will be framed & unframed categories.

**Class 1:** Action/Sports

**Class 2:** Human Interest

**Class 3:** Scenic/Nature

**Class 4:** Portrait

**Class 5:** Wildlife/Animals

**Class 6:** Storytelling Scenes/Collage

**Class 7:** Portrait

**Class 8:** Flowers

**Class 9:** Panorama (mount & print size will be 5" X 18")

**Class 10:** Miscellaneous



## DIVISION H: Flowers & Plants

Entries will be accepted from 9:00 am - 11:30 am, on Wednesday, August 21. Judging will begin at 11:30. Exhibitors must furnish their own containers. Exhibitors are responsible for the watering and other general care of exhibits as needed. Exhibitors are encouraged to replace wilted flowers before 10:00 am on Friday morning. The committee shall have the right to remove at any time the exhibit or part of the exhibit which has become unsightly.

**Class 1:** Potted Live Plants

**Class 2:** Artistic Fresh Arrangement

**Class 3:** Single Specimen - no foliage

**Class 4:** Fresh Bouquets

**Class 5:** Artificial Arrangements



## DIVISION F: Agriculture

Entries will be accepted from 9:00 am - 11:30 am on Wednesday, August 21. Judging will begin @ 11:30. The committee shall have the right to remove at any time the exhibit or part of the exhibit which has become unsightly.

### Class 1: Solanaceous Fruits

(plate of 5, any variety)

Tomatoes, Ripe-Green

Peppers, Bell-Chili

Eggplant, 1 only



### Class 2: Bulb Crops

(plate of 5, any variety)

Bulbs only,

Onion Bulbs and tops, well trimmed

### Class 3: Pod Vegetables

(10 pods at edible maturity)

Beans

Peas

Okra



### Class 4: Corn

(5 ears husked or 6 stalks)

Sweet Corn, Husked Sweet Corn,

Field Corn, Stalks (tied in 4 places)

Popcorn, Stalks (tied in 4 places)

### Class 5: Root Crops

(5 roots, 1 inch top, edible maturity, uniform size, washed)

Carrots

Radishes

Parsnips

Beets

Turnips



### Class 6: Cole Crops Specimen

Lettuce, 1 head trimmed or

2 leaves Romaine

Cabbage, 1 head trimmed

Cauliflower, 1 head trimmed

Broccoli, 1 lb. bunch

Brussel Sprouts, 10 buds

Summer Squash

Kohlrabi, 5 on a plate

Parsley, 1/4 lb. bunch

Rhubarb, 5 stalks



### Class 7: Vine Crops

Watermelon, 1

Pumpkin, 1

Squash, 2

Cantaloupe, 2

Cucumbers, 5



### Class 8: Tuber Crops

Potatoes, 5

### Class 9: Herbs

Dill, 2/4 lb. bunch

Chives

Mint

Others



### Class 10: Fruit

Pitted Fruits, plate of 5

Small Fruits & Berries,

Strawberries, plate of 5

Raspberries, Gooseberries,

Currants, plate of 10

Grapes, 1 bunch

### Class 11: Misc. Fruit

Apple, 5

Pears, 5



### Class 12: Novelty

Gourds & Vegetables, 5

Sunflowers, 2 heads

### Class 13: Largest

(1 item)

Pumpkin Tomato

Cantaloupe Potato

Onion Watermelon

### Class 14: Eggs

(1 dozen)

\* White \* Brown \* Colored



### Class 15: Honey

Fresh Honey, 1 quart