



**There is more to me  
than my disability.**  
Community Connections

# There's More to Us...



*Alexandra Rodriguez, Community Connections' Board Member  
and Durango Transit Commuter of the Month, December 2018*

## A year at Community Connections



**Connect With Us!**

(970) 259-2464 | [cci@cci-colorado.org](mailto:cci@cci-colorado.org)

[www.communityconnectionscolorado.org](http://www.communityconnectionscolorado.org)

# 2018

## Annual Report

# More to Us...Our Leadership



**Tara Kiene,**  
**President/CEO**

Dear friends,

2018 was overall a great year for Community Connections. We embarked upon an ambitious 10-year strategic plan to achieve improved social inclusion for children and adults with intellectual disabilities. Effective social inclusion involves people with disabilities living and participating in their communities, having satisfying lives and valued social roles, accessing the supports they need and being safe and healthy in the environments in which they choose to live.

One thing we realized in our strategic planning work is that social inclusion cannot be achieved without significant engagement of our communities. As a result, we hired a Vice-President of Marketing & Development to increase our connections with the public and funding to support our work. This has already resulted in increased media exposure; wider engagement and commitments with local businesses, municipalities and counties; and increased exposure for our message and mission.

The year was also a productive time for Community Connections to improve our processes to be more effective and efficient in our services. This included improving our new employee training and onboarding, designing a robust safety program, and improving Case Management systems. Much gratitude goes to our hard-working, committed staff who have participated in many changes. We owe all of our success to our employees and host homes, our 361 program participants, and our supportive communities throughout southwest Colorado!

## 2018

### Board of Directors

**Bob Conrad**  
- Durango

**Jim Denier**  
- Durango

**Sarah Kahn**  
- Durango

**Anne Kernan**  
- Ignacio

**Janice Moen**  
- Cortez

**Alexandra Rodriguez**  
- Durango

**Richard Siegle**  
- Durango

**Cynthia Sadler**  
- Cortez

**Kicki Searfus**  
- Durango

To our wonderful communities,

What a marvelous year we had in 2018! We are grateful for community members and partners helping us to achieve our mission and vision.

In December, we experienced the community's support during our 15<sup>th</sup> annual Festival of Trees, where we saw a 200% increase in community participation, business sponsors and individual donations. Our staff, clients and their families are touched by our community's continued support and encouragement every year.

In 2018, in addition to growth in individual donations and local government support, we saw growth in our board membership. New board members are Janice Moen and Cynthia Sadler of Cortez and Dr. Kirsten "Kicki" Searfus of Durango. They each bring tremendous talent and passion to serve and further our mission.

It is with thanks we praise not only the clients and families who give our work so much meaning, but Community Connections' staff who put action to our full hearts. We look forward to a bright and exciting 2019 with all of you by our side, and to hearing from you throughout the year as to how we can make it our best yet!

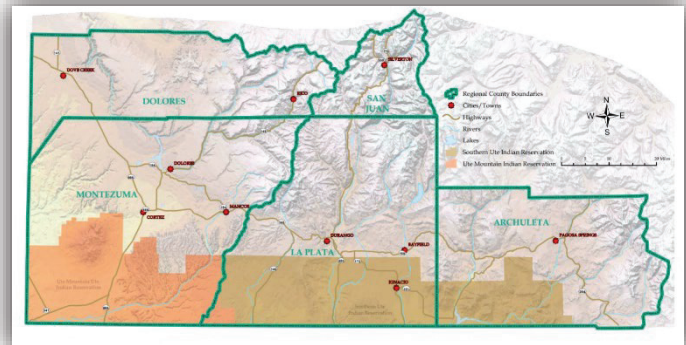


**Sarah Kahn, MA., LPCC,**  
**Board Chair**

# More to Us...Our Purpose

## Background

Community Connections, Inc. (CCI) was founded in 1985 as the Community Centered Board serving individuals with intellectual and developmental disabilities (IDD) in southwest Colorado (Archuleta, Dolores, La Plata, Montezuma, and San Juan Counties). The de-institutionalization movement was still in its infancy even then, and many individuals were not moved from the



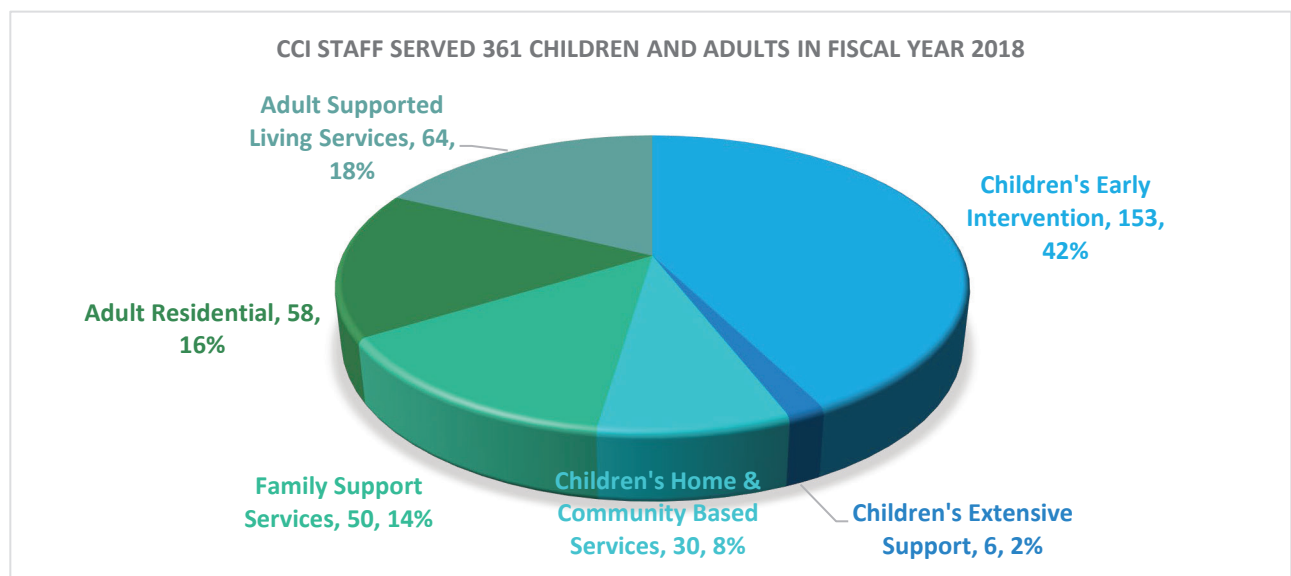
Regional Centers back into their communities until the 1990's. The families and caregivers who founded Community Connections had a vision of people with intellectual and developmental disabilities living in regular homes, working and playing in the community, leading typical lives. CCI has remained true to its vision and continues to provide services in the least-restrictive environments possible. It is our commitment to see children are being served in their family home or child care setting, and adults live and work in the community rather than being in segregated sheltered workshops and group homes.

## Mission

Community Connections' mission is to create opportunities for children and adults with intellectual and developmental disabilities to lead healthy and fulfilling lives within our community.

## Vision

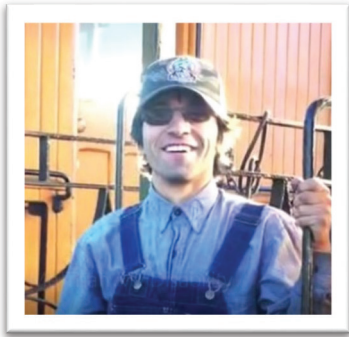
Our vision is a community where all people with intellectual and developmental disabilities have the same opportunities as other community members.





# More to Us...Our Programs

## Adult Services (Residential and Supported Living Services)



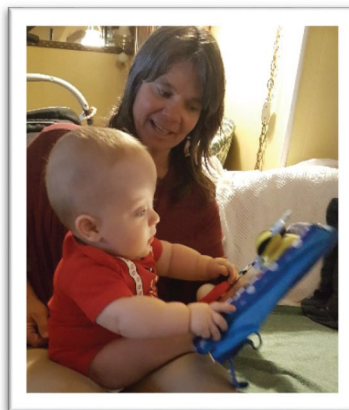
In 2018, Adults Services programs served a combined total of 122 individuals across CCI's 5-county region. Participants in Residential Services have access to 24-hour supports either in their own home or in the home of a paid provider. Supported Living Services participants often live independently or with family, but need additional supports available through IDD services: help with money management, grocery shopping, cooking, personal hygiene, mentorship, job support, community participation, respite and assistive technology.

## Family Support Services



The Family Support Services Program relieves some of the pressures on families who care for a loved one with IDD in their homes, thereby avoiding costly and distressing out-of-home placements. Families receive a monthly reimbursement for expenses associated with the disability and access the program for supports like respite care, transportation to medical specialists, special equipment, medical treatments and supplements not covered by insurance. FSS funds also cover workshop and conference costs to learn more about their child's disability. In 2018, 100% of individuals with disabilities participating in the program stayed in their family home. In 2018, 50 families benefitted from Family Support Services.

## Early Intervention



The Early Intervention program serves families of children under three who are experiencing delays in development. Therapists work directly with family members or other caregivers on an ongoing basis to equip them with the skills to support their child's development. Early intervention has consistently been shown to reduce or eliminate gaps in development and significantly decrease the need for more costly services later in life. Since children graduate from Early Intervention frequently (either by aging out at 3 or by reaching their developmental goals), the number in services fluctuates, but in 2018, the program served 153 kids. Evaluations from families applaud the program's ability to help parents understand their rights, communicate their children's needs and help their children develop and learn.

# More to Us...Our Stories



## Changing lives with heart

*"I am grateful for every day I can elicit a smile or a laugh and help clients have a healthy and happy life."*

- Kirk Coy, Host Home Provider

Community Connections benefits daily from the thoughtful engagement of the many staff, host home providers and program participants that support one another. Occasionally, one person stands out as going above and beyond what the job requires. In 2018, that person was Kirk Coy of Cline (south of Breen), former Direct Support Professional, father of four, husband, son, caregiver and current Host Home Provider of almost two years.

Matt Payne, CCI Adult Services Program Director in Durango, describes Kirk as a model Host Home Provider, and said, "Kirk is always supportive of the program and offers to help. He takes excellent care of the women who live with him." When asked what Kirk loves most about the role, he said, "It is the most spiritually rewarding work anyone could ever do." He also loves that he can make a living doing something that not everybody has the ability to do.

Thank you, Kirk, for your loving care and commitment to our clients and including them in your family. You are most certainly part of ours.

---

## Activating potential, building confidence

One snake, one fish, two dogs, two horses, 14 chickens, 7 turkeys, 10 ducks and 3 cats. That's just a sampling of the animals and small farm Cassidy Larrick, 33 of Cortez, life-long animal lover and CCI client, tends on a daily basis.



It was no surprise then when Cassidy expressed to CCI staff her interest in working as a Veterinary Technician. It is something she has wanted to do for many years, but the opportunity finally presented itself in 2018 when Brandy Harris, Program Assistant in Cortez, reached out to the Montezuma Veterinary Clinic on Cassidy's behalf. They didn't have any positions open at the time, but agreed to bring her on in November as a trainee in a paid position.

In four short months, Cassidy was thrilled to finally build on her many years volunteering to earn paid work with animals. She's learned a lot and co-workers say she's already become much more engaged and confident in her duties, anticipates the veterinarian's needs, and is comfortable around all the animals and really fun to be around. Congratulations Cassidy on a job well done!



# More to Us... Celebrating a Generous Community



## DO A GOOD DEED AND GET A GREAT VEHICLE!

Each year, CCI partners with Morehart-Murphy Subaru for their annual 'Share the Love' Event. From mid-November – early January, Morehart-Murphy Subaru donates \$250 to Community Connections (or your choice of four national charities selected by Subaru of America, Inc.) with each car sold. In 2018, Subaru awarded Community Connections a \$15,000 check. Thanks for sharing the love!

## ANNUAL MEETING & COMMUNITY CELEBRATION

Jim Denier, CCI Board Member, presented the Adaptive Sports Association CCI's 2018 Community Partner award to Bailey Carlson, CCI Direct Support Professional and ASA volunteer.

Jim also recognized the 2018 EMPLOYERS OF PEOPLE WITH INTELLECTUAL AND DEVELOPMENTAL DISABILITIES: BAYMONT BY WYNDHAM CORTEZ, CHINOOK MEDICAL GEAR, CITY OF CORTEZ, DURANGO SILVERTON NARROW GAUGE RAILROAD, HOME DEPOT, NATURE'S OASIS, SKY UTE CASINO RESORT, TACO BELL, VIBRANT PET ANIMAL HOSPITAL AND WALMART

Over 70 clients, friends and partners enjoyed lunch at the Holly House, CCI's day habilitation program site, in Durango.



## New Raffle & Rounding Up for CCI!

Thanks to Kroegers Ace Hardware and customers for supporting CCI by rounding up and purchasing raffle tickets at the store. Round-up delivered a \$3,000 donation and the raffle \$8,630 in new funding.

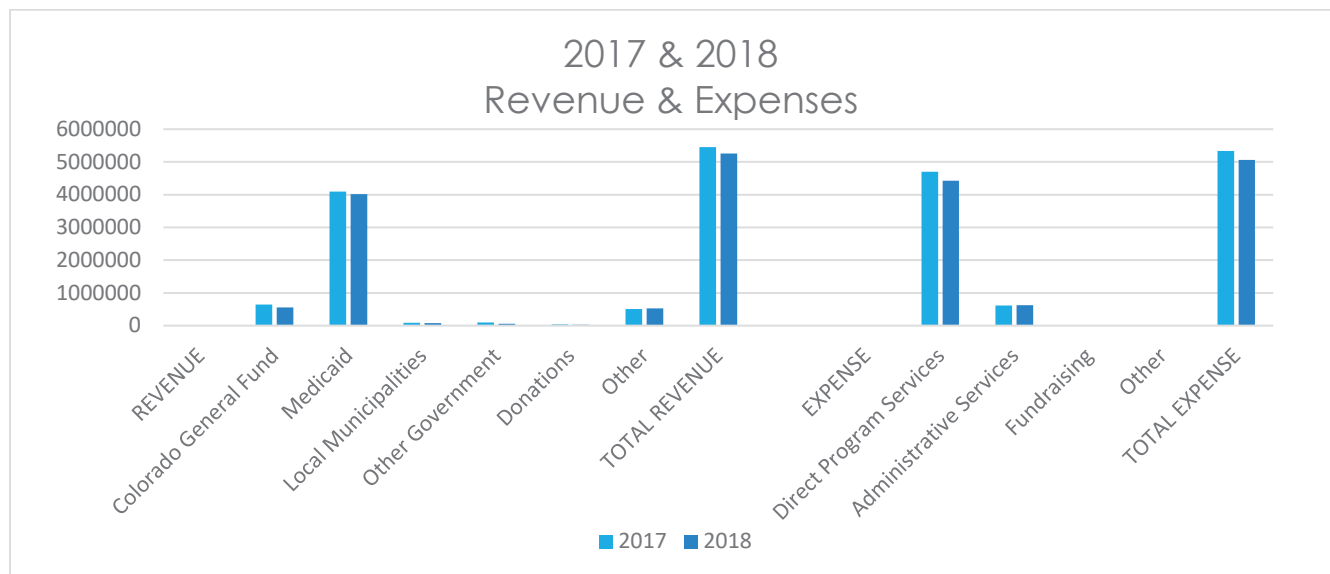


## 15th Annual Festival of Trees

Thanks to sponsors, donors and community members, the 2018 Festival of Trees raised \$27,000. The new Board of Directors/Festival of Trees raffle contributed almost a third of that revenue and paid for repairs to a CCI vehicle that transports and helps clients in Cortez participate in community life.

## More to Us... Our Resources

Most of Community Connections funding (75%) comes from Medicaid programs. CCI is pleased to be able to invest \$4 million in state funding annually serving our clients and communities across southwest Colorado. State funding means we don't have to raise \$4 million locally. It does, however, have its disadvantages, including the limited ability to help clients meet their social integration goals and the inability to set rates for services to be a more competitive employer. Local and state government, private foundation and individual donations remain vital to CCI being able to provide more person-centered services and be most responsive to the needs of people with intellectual and developmental disabilities in our region.



REVENUE	2017	2018	EXPENSE	2017	2018
Colorado General Fund	\$640,065.00	\$559,290.00	Direct Program Services	\$ 4,701,770.00	\$ 4,424,555.00
Medicaid	\$4,090,810.00	\$4,013,347.00	Administrative Services	\$ 613,850.00	\$ 625,047.00
Local Municipalities	\$83,136.00	\$73,000.00	Fundraising	\$ 20,555.00	\$ 12,005.00
Other Government	\$100,136.00	\$56,832.00	Other	\$ 3,130.00	\$ 3,993.00
Donations	\$34,472.00	\$32,387.00			
Other	\$507,534.00	\$524,694.00			
<b>TOTAL REVENUE</b>	<b>\$5,456,153.00</b>	<b>\$5,259,550.00</b>	<b>TOTAL EXPENSE</b>	<b>\$ 5,339,305.00</b>	<b>\$ 5,065,600.00</b>

### Client Distribution and Program Investment by County

Program/County	Montezuma	Dolores	La Plata	San Juan	Archuleta	Total Clients	Program Investments
Early Intervention	40		96	1	16	153	\$ 376,622.00
Children's Extensive Support	1		4		1	6	\$ 46,369.00
Children's HCBS	7		21		2	30	\$ 9,457.00
Family Support Services	13		31	1	5	50	\$ 141,478.00
Adult Residential DD Waiver	30	6	22	0	0	58	\$3,079,832.00
Adult SLS Waiver	22	1	35		6	64	\$ 770,797.00
<b>TOTAL CLIENTS/INVESTMENT:</b>	<b>113</b>	<b>7</b>	<b>209</b>	<b>2</b>	<b>30</b>	<b>361</b>	<b>\$4,424,555.00</b>

Fully audited financial documents are available at [communityconnectionsco.org](http://communityconnectionsco.org)



**There is more to me  
than my disability.**  
Community Connections



# More to Us...All Aboard

Our ability to respond to the needs of kids and adults with intellectual and developmental disabilities in our region relies on the support of donors. Donations can be made at [communityconnectionsco.org](http://communityconnectionsco.org) or by mail: Community Connections, 281 Sawyer Dr., Ste., 200, Durango, CO 81303.



## Thanks to the individuals, businesses, foundations and local governments that financially supported our mission in 2018:

### \$10,000 and above

- City of Durango
- La Plata County
- Morehart Murphy Subaru/Subaru of America

### \$9,999 - \$5,000

- The Moniker Foundation
- United Way of Southwest Colorado

### \$4999 - \$1000

- Community Foundation Serving Southwest Colorado
- Denbro Inc.
- Durango Area Association of Realtors
- Durango & Silverton Narrow Gauge Railroad
- Empire Electric Association
- The Gallery
- John & Angie Wolgamott
- Kroegers Ace Hardware
- Stillwell Family Fund
- Sky Ute Casino & Resort
- Town of Bayfield
- Town of Pagosa Springs

### \$999 - \$500

- 1st Southwest Bank
- Alpine Bank
- Anonymous
- Bruce Whitehead & Becca Conrad-Whitehead
- Fasttrack Communications
- Fort Lewis College
- Helen K. Winfrey
- J. Patrick and Janice Murphy
- Kathleen Adams/Boone Fund
- La Plata Electric Association
- Morgan Stanley
- The Payroll Department
- Pediatric Associates
- Roger and Marjorie Wolf
- San Juan BOCES

### Up to \$499

- Amazon Smiles
- Anne Kernan
- Amanda Kuenzi
- Anna Riling
- The ARC of Southwest Colorado
- Ashley Furniture

- Basin Printing & Imaging
- Benevity Community Impact Fund
- Best Cleaning & Disaster Restoration Services
- Black Bear Carpet Cleaning & Repair
- Botanical Concepts
- Burt E. Coleman and Dell Manners
- City of Durango-La Plata County Airport
- Coca Cola of Durango-Farmington
- CO West Insurance
- Creature Comforts
- Courtney Harshberger Insurance Agency
- Cynthia Sadler
- Dance in the Rockies
- Daniel McConeghy
- David and Terry Clark
- Durango Joes
- Energy Inspections
- Furda-Lynch Family
- Grenadier Financial
- Hampton by Hilton
- Heidi Wald
- Holt Sheet Metal
- Janice and Keith Moen
- The Juniper School
- Karen Zink
- Kicki Searfus
- The Kroger Company
- Leigh and Stephen Meigs
- Lou Kiene
- Mark Craig Agency
- Marty Cagan & Lynn Gallati
- Mary Ann Richards
- The Mailroom Copy Center
- Maynes, Bradford, Shipps and Sheftel
- Munchkin Kids Durango
- Pediatric Partners
- Purgatory Resort
- Rocky Mountain Chocolate Factory
- San Juan Basin Public Health
- Serious Texas Bar-B-Q
- StoneAge, Inc.
- Tarpley RV
- Vantiv
- Vectra Bank
- Wild Horse Saloon
- Wings of Change