

Rabbit Anti-SSR2/TRAP Beta Polyclonal: RC0183

Intended Use: For Research Use Only

Description: Membrane receptor signaling by various ligands, including interferons and growth hormones such as EGF, induces activation of JAK kinases which then leads to tyrosine phosphorylation of proteins that have been designated Stats (signal transducers and activators of transcription. The first members of this family to be described include Stat1 α p91, Stat1 β p84 (a form of p91 that lacks 38 COOH-terminal amino acids) and Stat2 p113. Stat1 and Stat2 are induced by IFN- α and form a heterodimer which is part of the ISGF3 transcription factor complex. Stat3, which becomes activated in response to epidermal growth factor (EGF) and interleukin-6 (IL-6), but not interferon- γ (IFN- γ) or Stat4, is an The signal sequence receptor (SSR) is a glycosylated endoplasmic reticulum (ER) membrane receptor associated with protein translocation across the ER membrane. The SSR consists of 2 subunits, a 34-kD glycoprotein (alpha-SSR or SSR1) and a 22-kD glycoprotein (beta-SSR or SSR2).The signal sequence receptor (SSR) is a glycosylated endoplasmic reticulum (ER) membrane receptor associated with protein translocation across the ER membrane. The SSR consists of 2 subunits, a 34-kD glycoprotein (alpha-SSR or SSR1) and a 22-kD glycoprotein (beta-SSR or SSR2). The human beta-signal sequence receptor gene (SSR2) maps to chromosome bands 1q21-q23.

Specifications:

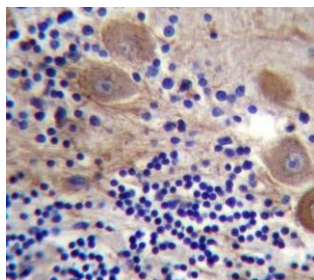
Clone: Polyclonal
 Source: Rabbit
 Isotype: IgG
 Reactivity: Human
 Localization: Endoplasmic reticulum membrane
 Formulation: Antibody in PBS pH7.4, containing BSA and \leq 0.09% sodium azide (NaN₃)
 Storage: Store at 2°- 8°C
 Applications: IHC, Flow Cyt., WB
 Package:

Description	Catalog No.	Size
SSR2/TRAP Beta Polyclonal Concentrated	RC0183	1 ml

IHC Procedure*:

Positive Control Tissue: Human skeletal muscle tissue, Jurkat cell lysate
 Concentrated Dilution: 100-300
 Pretreatment: Citrate pH6.0 or EDTA pH8.0 15 minutes using Pressure Cooker, or 30-60 minutes using water bath at 95°-99°C
 Incubation Time and Temp: 30-60 minutes @ RT
 Detection: Refer to the detection system manual

* Result should be confirmed by an established diagnostic procedure.



FFPE human cerebellum tissue stained with anti-SSR2 using DAB

References:

1. Signal Sequence Receptor 2 is required for survival of human melanoma cells as part of an unfolded protein response to endoplasmic reticulum stress. Garg B, et al. Mutagenesis 31:573-82, 2016..

Doc. 100-RC0183
Rev. A