

Niki de Saint Phalle



NH GALERIA

Niki de Saint Phalle

ESCULTURAS Y GRABADOS

18 de enero a 8 de marzo de 2015

Niki de Saint Phalle (Neuilly Sur Seine, France, 1930-2002)

Niki de Saint Phalle es una de las artistas más prominentes de la Historia del Arte. De origen franco-americano, Saint Phalle fue una escultora, pintora y cineasta autodidacta, conocida sobre todo por sus esculturas de fibra de vidrio y mosaico o de poliéster pintado.

En sus inicios, Saint Phalle realizaba pinturas al óleo de estilo naïve, así como collages muy coloridos con elementos visuales relacionados con la violencia, como pistolas y cuchillos. Este concepto se desarrolla más adelante en sus conocidas Shooting Paintings, consistentes en lienzos cubiertos de una imprimación muy pastosa, a los que disparaba bolas de pintura que se estampaban en él con fuerza.

Sus esculturas constituyen explosiones de color y componen un mundo fantástico marcado por las referencias a los mitos humanos, la astronomía, y la naturaleza. Sus imaginativas criaturas celebran la diversidad vital, con mujeres voluptuosas, planetas antropomorfos, estilizados monstruos, símbolos geométricos, calaveras humanas y variados animales. Saint Phalle encontró una fuente de inspiración en la obra de Gaudí, especialmente el Park Güell de Barcelona. Su relación con el también artista Jean Tinguely resultó en colaboraciones artísticas innovadoras.

Sus figuras más paradigmáticas son las Nanas, voluptuosas figuras femeninas que actúan como arquetipos de representación de sus ideas sobre la mujer en la sociedad moderna, y que pueden verse en ciudades y museos de todo el mundo.

Algunas de sus obras más conocidas son la Fuente Stravinsky, junto al Centro Pompidou en París (1983), el Jardín del Tarot en Garavicchio, al sur de la Toscana (1998), el Grotto en el Jardín Real Herrenhausen de Hannover (2003) y el Círculo Mágico de la Reina Califa en California (2003). Además, su obra está representada en museos y colecciones públicas de todo el mundo. En el año 2000 recibió el Praemium Imperiale en Japón, el equivalente en el mundo del arte al Premio Nóbel. Niki de Saint Phalle murió en La Jolla, California, en 2002, a la edad de 71 años.

NH
GALERIA

Centro:
Callejón de los Estribos con Playa de la Artillería
Carrera 2 No. 33-36
Cartagena de Indias, Colombia
575- 664-0561 nhgaleria@gmail.com

BAIGNEURS OU DANSEUSE, 1980/1981
poliéster pintado con acrílico mate barnizado, ed. 150
51 x 48 x 35 cm. 20 x 19 x 13 3/4 in.





NANA VASE, 1984
poliéster pintado con acrílico mate barnizado, ed. 150
48.8 x 29 x 30 cm. 19.2 x 11.4 x 11.8 in.



DO YOU LIKE MY NEW DRESS (REMEMBERING), 1997
poliéster pintado con acrílico mate barnizado, número de edición desconocido
99 x 56 x 10.2 cm. 39 x 22 x 4 in.



MANDALA (REMEMBERING), 1997
poliéster pintado con acrílico mate barnizado, ed. 5 (ejemplar único)
73.6 x 99 x 10 cm. 29 x 39 x 4 in.



DANCING WITH YOU (REMEMBERING), 1997-2004
poliéster pintado con acrílico mate barnizado, 2 piezas, ed. 5
Máquina: 91.4 x 150 x 7.6 cm. 36 x 59 x 3 in.
Nana: 63.5 x 45.7 x 7.6 cm. 25 x 18 x 3 in.



SNAKE LADY VASE, 2000
poliéster pintado con acrílico mate barnizado, ed. 4
26.7 x 33 x 26 cm. 10.5 x 13 x 10.2 in.



CALIFORNIA NANA VASE, 2000
poliéster pintado con acrílico mate barnizado, P.A. 150
33.6 x 20.2 x 19 cm. 13.2 x 7.5 in.



NANA ON AN ELEPHANT, 1979
acrílico y cera sobre yeso, ed. 10
12.7 x 19 x 7.6 cm. 5 x 7 1/2 x 3 in.



DRAGON - WHO IS THE MONSTER? (REMEMBERING), 1997
poliéster pintado con acrílico mate barnizado, ed. 5
48.3 x 109.2 x 7.6 cm. 19 x 43 x 3 in.



LA LUNE, 1987
poliéster pintado con acrílico mate barnizado, ed.10
68.6 x 30.5 x 23 cm. 27 x 12 x 9 in.



LOUIS ARMSTRONG, 1998
painted polyester, gold leaf, aluminum base, ed. 8
25 x 12 1/2 x 10 5/8 in. 63.5 x 32 x 27.5 cm.



MILES DAVIS, 1999
painted polyester, gold leaf, aluminum base, ed. 8
17 1/8 x 8 5/8 x 8 5/8 in. 44 x 22 x 22 cm.



BIRD ON RING (RICHARD), 2001
painted polyester, gold leaf, steel base, ed. 12
29 1/2 x 19 x 15 in. 74.9 x 48.3 x 38.1 cm.



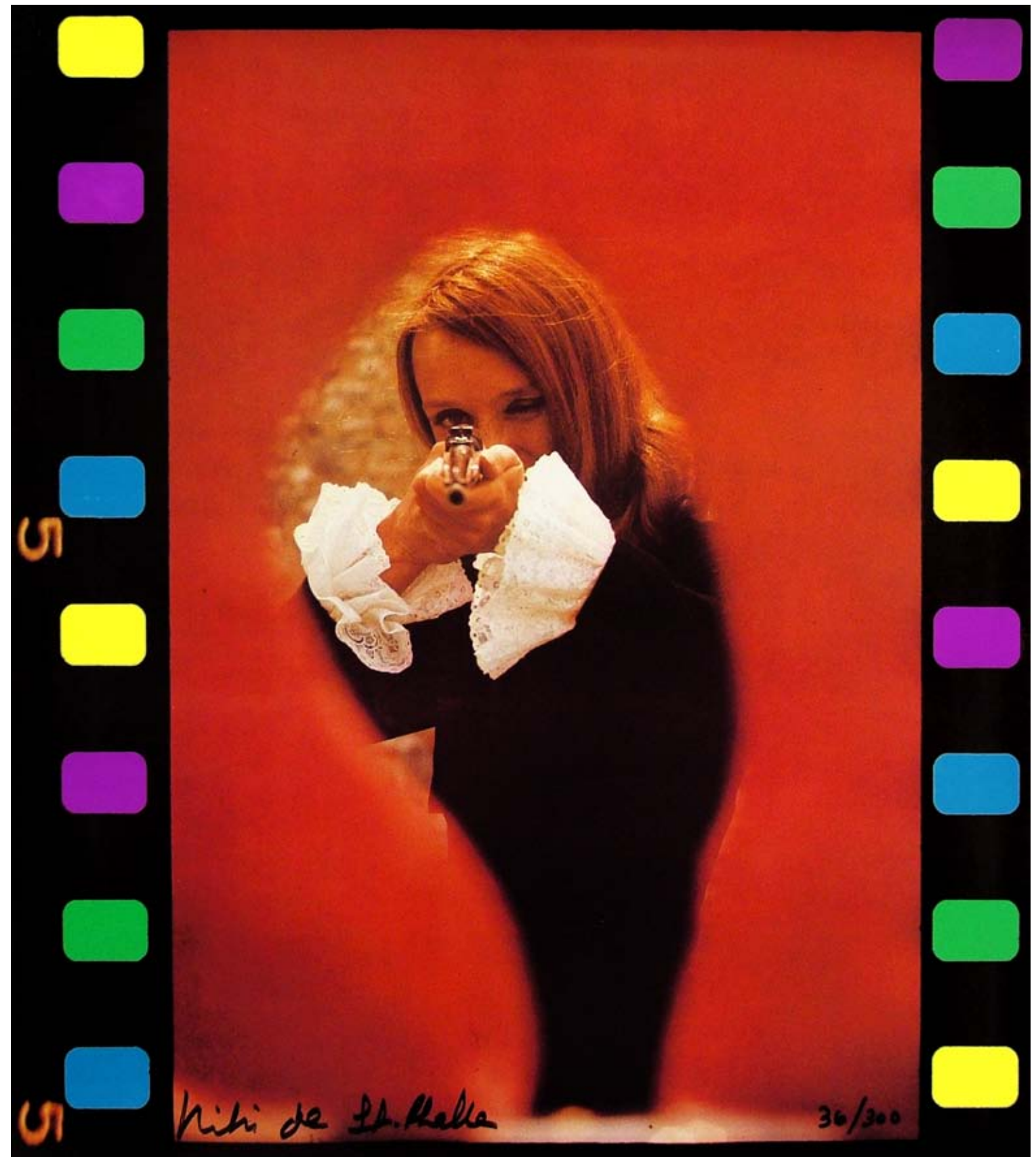
TABLE "AUX QUATRE NANAS" (FOUR NANAS TABLE), 1994
glass and mirror mosaic, ed. 8
45.7 in. diam. x 1.2 in. 116 cm. diam. x 3 cm.
base: 29.5 x 18.5 x 18.5 in. 75 x 47 cm. diam



COLLAGE - LOVE
tinta y lápiz con collage sobre papel
31.1 x 40.6 cm. 12 1/4 x 16 in.



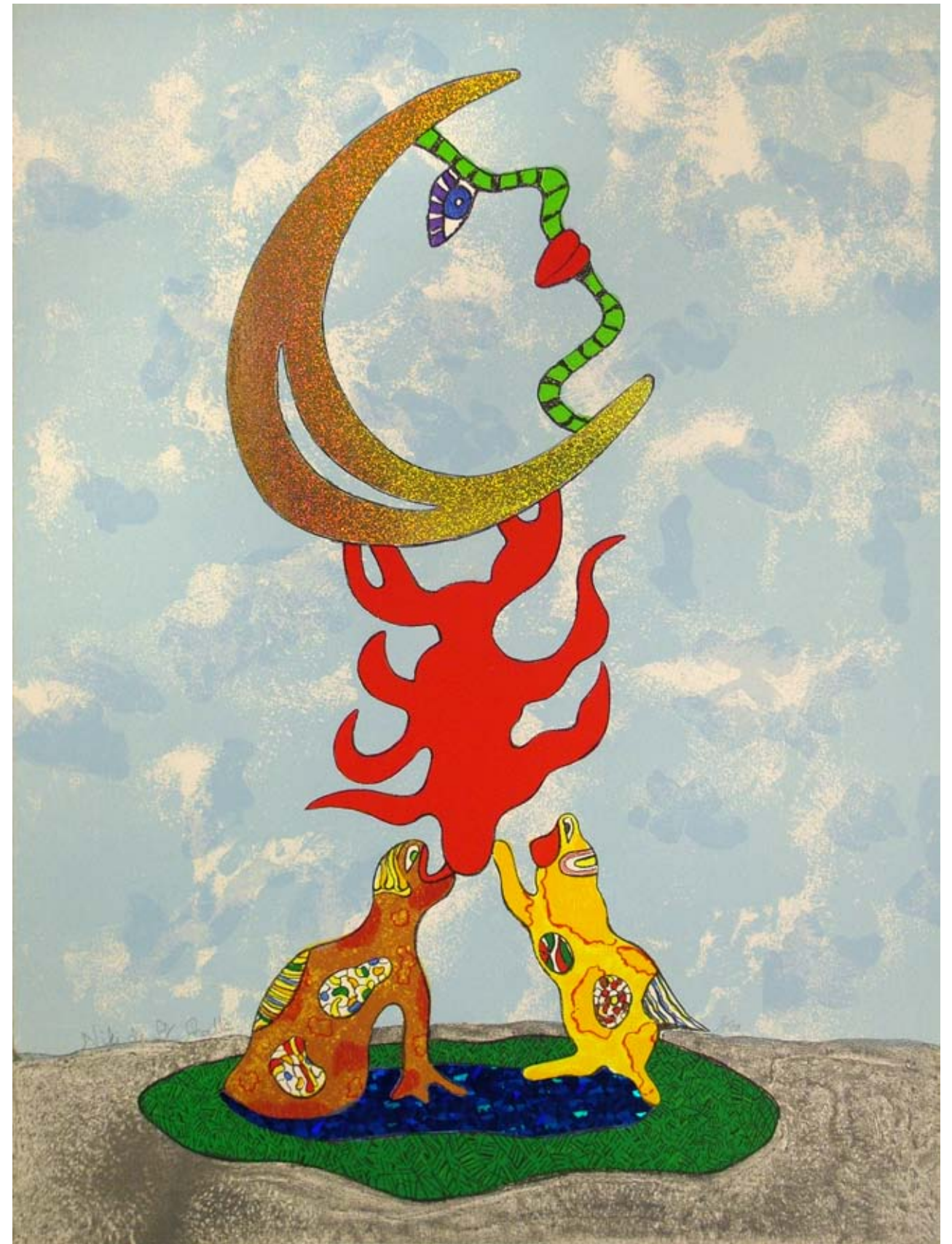
NANA FONTAINE, 1989-90
silkscreen on paper, ed. 75
39.57 x 35.4 in. 100.5 x 90 cm.



SHOOT, 1973
photograph in printed cardboard envelope, ed. 300
17 1/4 x 19 3/4 in. 43.8 x 50.2 cm.



THE HIEROPHANT CARD NO. V, 1998
lithograph, sticker collage, ed. 100
29.5 x 22.3 in. 75 x 56.7 cm.



LA LUNE (MOON GODDESS), 1997
litografía con collage de adhesivos, ed. 100
75 x 56.8 cm. 29.5 x 22.4 in.



THE FALLING TOWER CARD NO. XVI, 1997
lithograph, sticker collage, ed. 100
29.5 x 22.3 in. 75 x 56.7 cm.



JUSTICE, 1999
litografía con collage de adhesivos, ed. 100
75 x 56.7 cm. 29.5 x 22.3 in.



STRENGTH CARD NO. II, 1998
lithograph, collage elements, ed. 100
22.25 x 29.5 in. 56.5 x 75 cm.



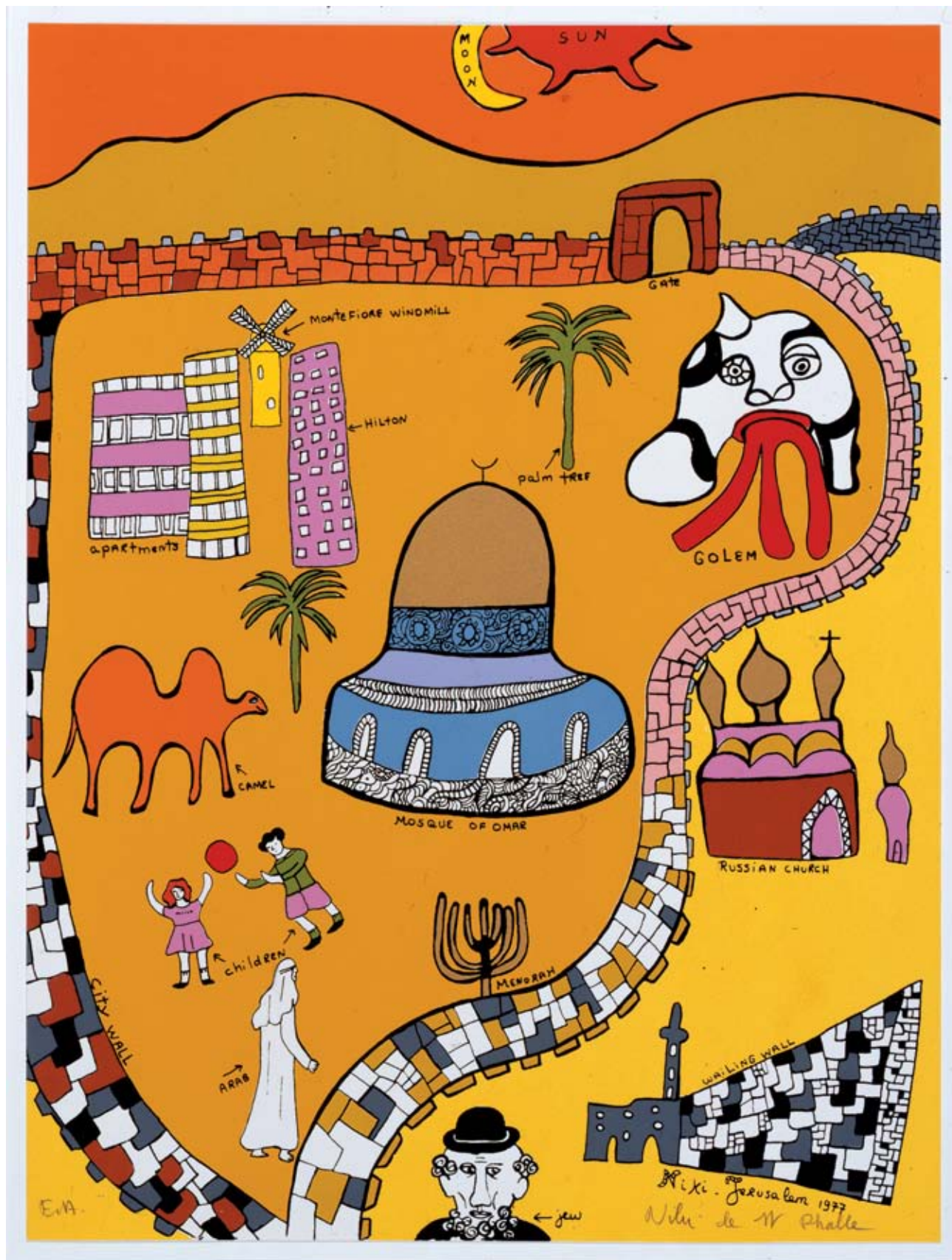
STRENGTH, 1973
woodcut, ed. 100
15.16 x 20.5 in. 38.5 x 52 cm.



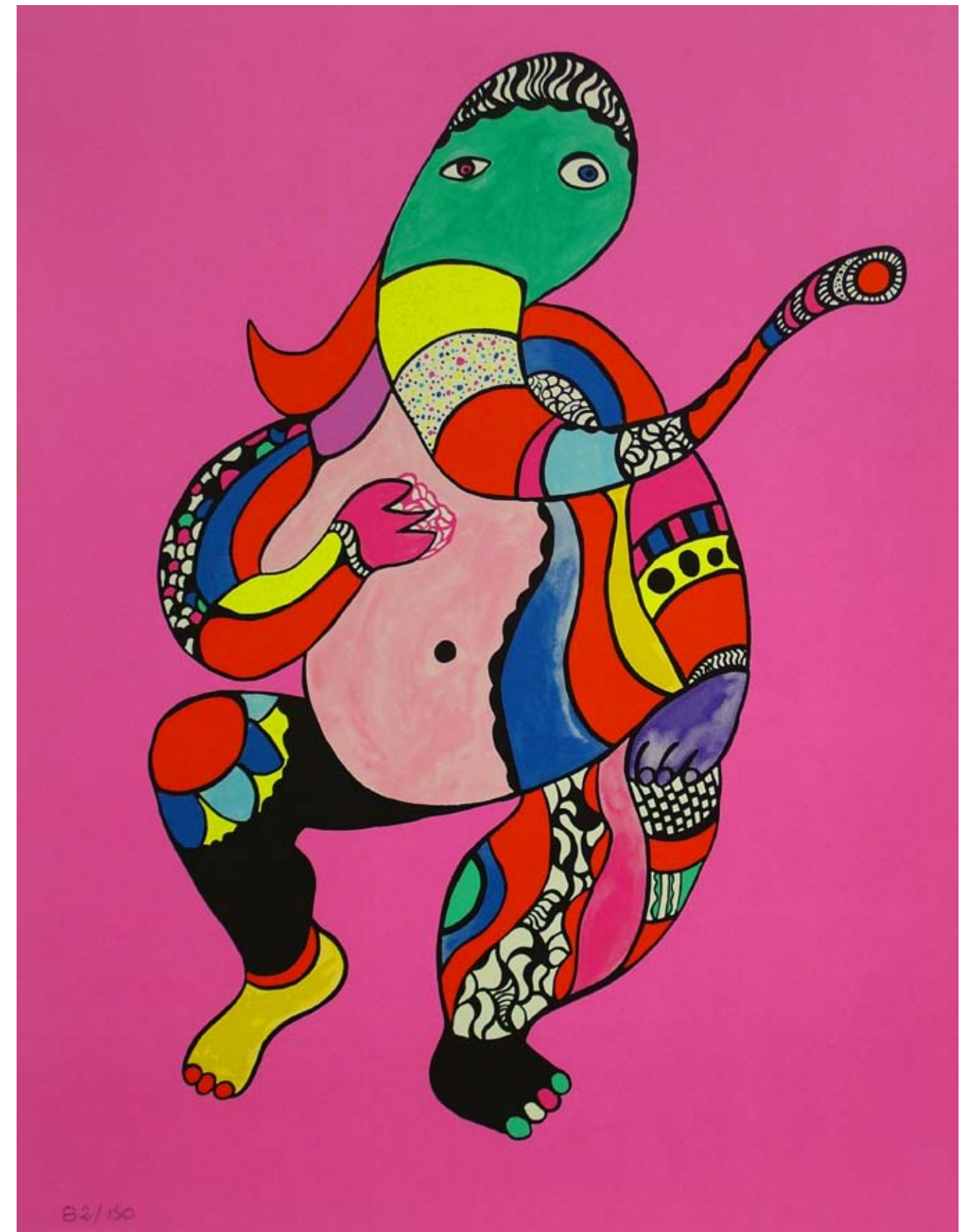
THE SUN CARD NO XVIII, 1998
litografía con collage de adhesivos
75 x 56.5 cm. 29.5 x 22.25 in.



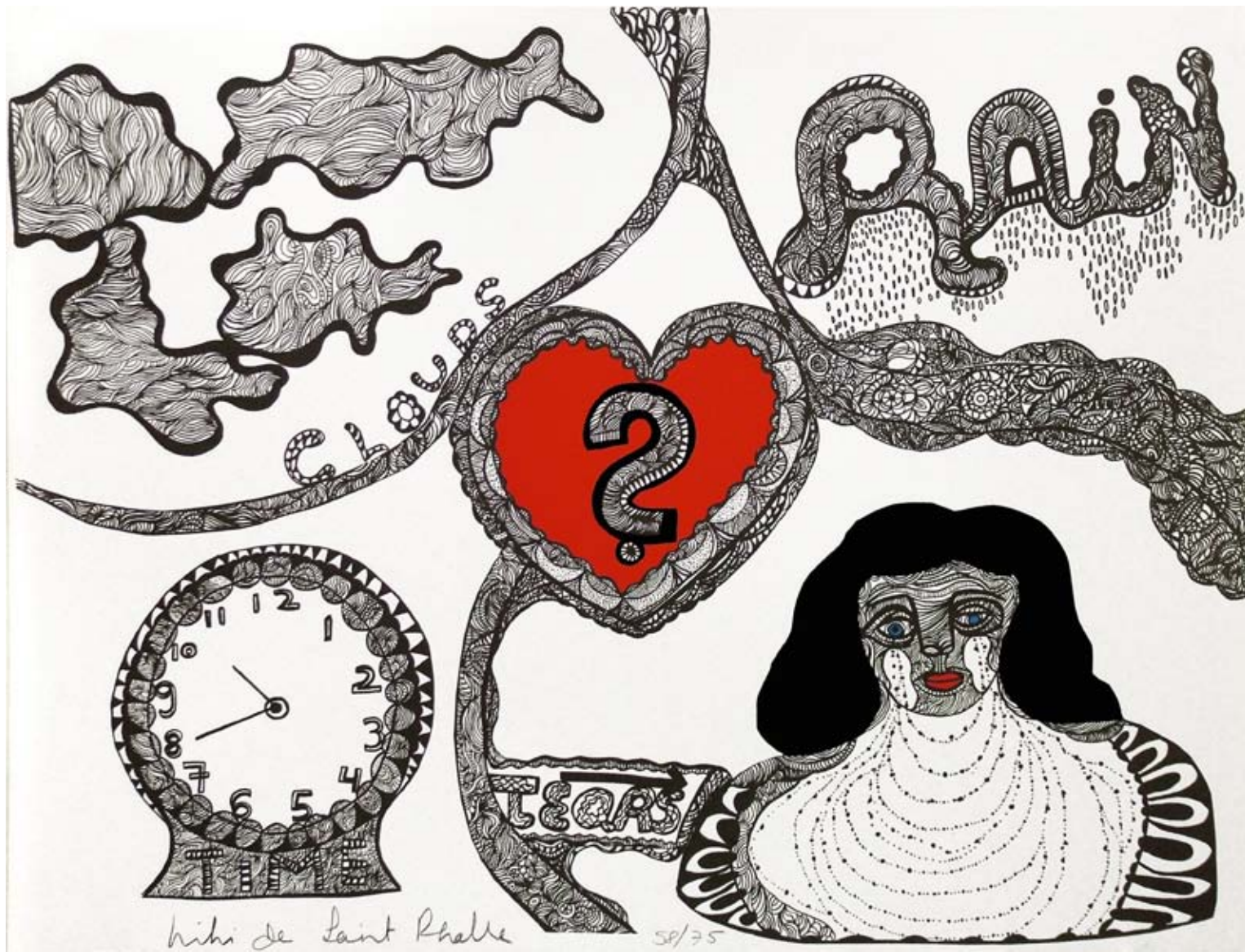
TEMPERANCE, 1997
litografía con collage de adhesivos, ed. 100
75 x 56.5 cm. 29.5 x 22.25 in.



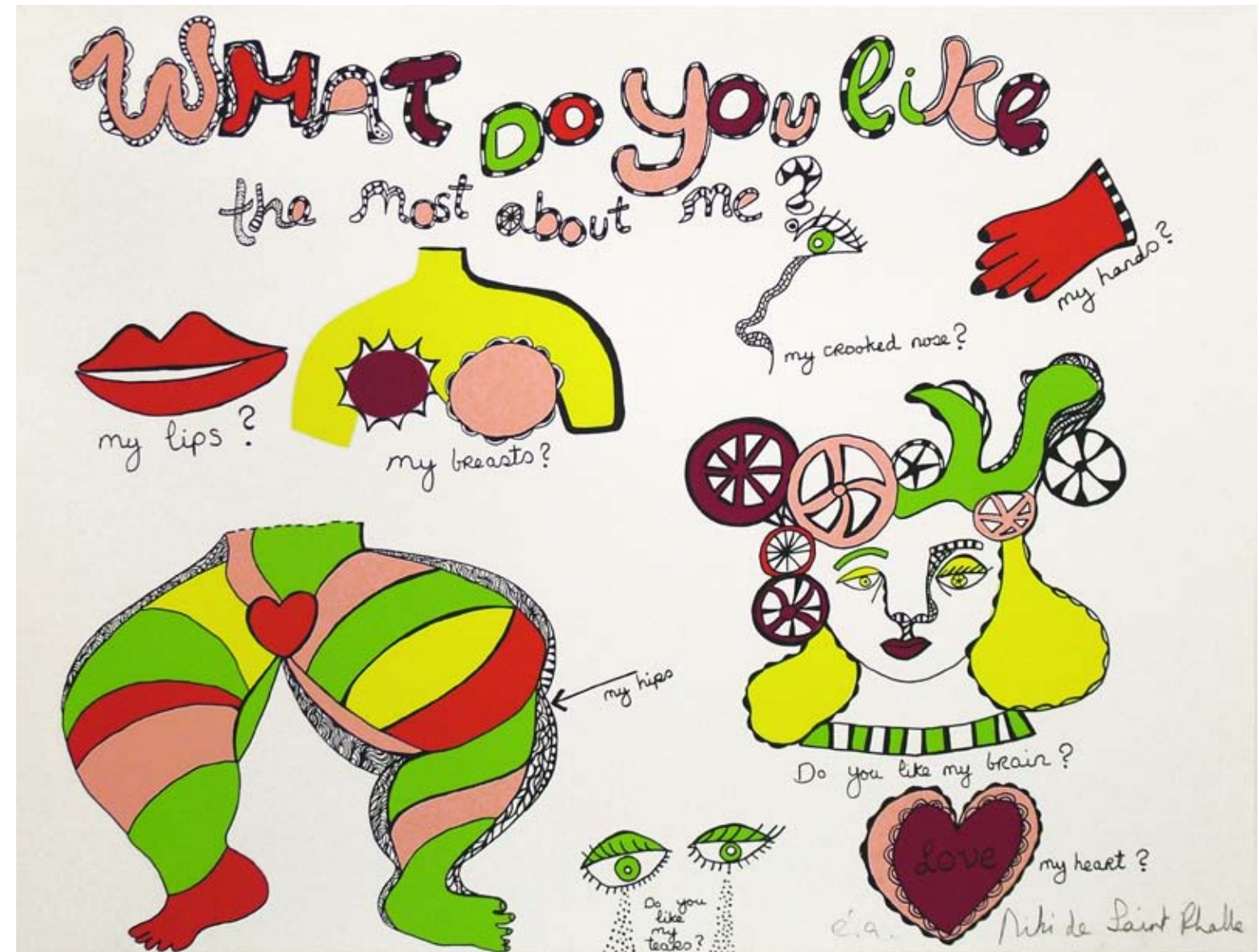
JERUSALEM, 1977
serigrafía
65 x 49 cm. 25.6 x 19.3 in.



GANESH, 1992
serigrafía, ed. 150
65 x 50 cm. 25.6 x 19.7 in.



RAIN, 1970
serigrafía, ed. 75
50 x 65 cm. 19.7 x 25.6 in.



WHAT DO YOU LIKE THE MOST ABOUT ME?, 1970
serigrafía
50 x 65.5 cm. 19 5/8 x 25 3/4 in.



ETUDE POUR LA DANSE (FIRST PRINTING), 1994
serigrafía
56 x 76 cm. 22 x 29.84 in.



LA DANSE (HOMMAGE A MATISSE), 1995
serigrafía
59.9 x 80 cm. 23.6 x 31.5 in.



LA QUESTION, 1988
serigraph
16.73 x 19.7 in. 42.5 x 50 cm.



UNTITLED (TOTEM, UPSIDE DOWN NANA, LE TEMOIN), 2001
litografía con collage de adhesivos
62 x 47 cm. 24.4 x 18.5 in.

NIKI DE SAINT PHALLE

1930 Born in France

INSTALLATIONS AND PUBLIC WORKS

“La Fontaine Stravinsky,” Centre Georges Pompidou, Paris
“Oiseau pour Jean-Jacques,” Cimetière du Montparnasse, Paris
“Chat de Ricardo,” Cimetière du Montparnasse, Paris
“Le Cyclop,” Milly-la-Forêt, France
“Arbre serpents fontaine,” Musée des Beaux-Arts, Angers, France
“La Fontaine de Château-Chinon,” Château-Chinon, France
“Le Monstre du Loch Ness,” Promenade des Arts, Nice, France
“Miles Davis,” Hotel Negresco, Nice
“Nana danseuse (jaune),” Hotel Negresco, Nice
“Hannover Nanas (Sophie, Charlotte, Caroline),” Hannover, Germany
“Grotto,” Herrenhäuser Gärten, Hannover
“Oiseau Amoureux Fontaine / Lebensretter-Brunnen,” Duisburg, Germany
“Nana on a Dolphin,” Landungsbrücken St. Pauli, Hamburg
“Le Poète et sa Muse,” Universität Ulm, Germany
“Golem (Mifletzet),” Rabinovitch Park, Jerusalem, Israel
“Noah’s Ark Sculpture Park,” Tisch Family Zoological Gardens, Jerusalem
“The Tarot Garden,” Pescia Fiorentina, Capalbio, Italy
“Nana Mosaïque Noire,” Capalbio
“La Tempérance,” Centre Hamilius, Luxembourg
“Relief,” Royal Exchange Square, Glasgow, Scotland
“L’Ange Protecteur,” Zürich Hauptbahnhof, Switzerland
“Grand oiseau amoureux,” Private Collection, Morat, Switzerland
“Coming Together,” San Diego Convention Center, CA
“Le Poete et sa Muse,” Mingei International Museum, San Diego, CA
“Nikigator,” Mingei International Museum, San Diego, CA
“Pizza Oven,” Restaurant Barbarella, La Jolla, CA
“Queen Califia’s Magical Circle,” Iris Sankey Arboretum, Escondido, CA
“Sun God,” University of California, San Diego, CA
“Arbre Serpents Fontaine,” New Hyde Park, New York
“L’oiseau de feu sur l’arche (The Firebird),” Bechtler Museum of Modern Art, Charlotte, NC
“Le Dragon de Knokke,” Private Collection, Knokke, Belgium
“Star Fountain – Blue,” Armory Arts Week/The Armory Show, Times Square, New York

ONE-PERSON EXHIBITIONS

1956 “Niki Mathews New York Gemälde, Gouachen,” Galerie Restaurant Gotthard, St. Gallen, Switzerland
1961 “Feu à Volonté,” Galerie J., Organized by Pierre Restany, Paris, France
“Niki de Saint Phalle,” Kjøpcke Gallery, Copenhagen, Denmark
1962 “Action de tir,” Everett Ellin Gallery, shooting session, Los Angeles, CA
Shooting session, Malibu Hills, CA
“Niki de Saint Phalle,” Galerie Rive Droite, Paris
“Niki de Saint Phalle,” Alexander Iolas Gallery in collaboration with Jean Larcade (Paris), New York, NY
1963 “King Kong,” The Dwan Gallery, Los Angeles
1964 “Niki de Saint Phalle,” The Dwan Gallery in association with the Alexander Iolas Gallery, Los Angeles
“Niki de Saint Phalle,” Galerie Alexandre Iolas, Geneva, Switzerland
“Niki de Saint Phalle: You Are My Dragon,” Hanover Gallery, London, England
1965 “Niki de Saint Phalle,” Alexander Iolas Gallery, New York
“Niki de Saint Phalle,” Galerie Alexandre Iolas, Paris

1966 “Niki de Saint Phalle,” Alexander Iolas Gallery, New York
1967 “Niki de Saint Phalle: Les Nanas au pouvoir,” Stedelijk Museum, curated by Ad Petersen, Amsterdam, Netherlands.
Traveled to Kunstverein für die Rheinlande Westfalen, Dusseldorf, Germany and Künstlerhaus, Hanover, Hanover Kunstverein as “Niki de Saint Phalle: Werke 1962–1968”
“Papier-Mâché Animals in a Zoo,” Alexander Iolas Gallery, New York
“Niki de Saint Phalle: Voir les mini-nanas en plâtre peint et aussi des dessins,” Galerie Espace, Amsterdam
1968 “Niki de Saint Phalle,” Gimpel & Hanover Galerie, Zürich, Switzerland
“Niki de Saint Phalle,” Hanover Gallery, London
“Flash Niki de Saint Phalle: Hier soir j’ai fait un rêve,” Galerie Alexandre Iolas, Paris
1969 “Plastiken, Zeichnungen und Graphiken von Niki de Saint Phalle,” Galerie Stangl, Munich, Germany
“Niki de Saint Phalle,” Kunstmuseum, Lucerne, Switzerland
“New Lithographs and Sculptures,” Frank Perls Gallery, Beverly Hills, CA
“Niki de Saint Phalle: Nana fontaine,” Galerie Alexandre Iolas, Geneva
“Niki de Saint Phalle: Grafieken en reliëfs in Seriaal,” Galerie Seriaal, Amsterdam
“Niki de Saint Phalle,” Hanover Gallery, London
1970 “Niki de Saint Phalle: Le Rêve de Diane,” Galerie Alexandre Iolas, Paris
“Les Nanas,” Pavillon Baltard, Les Halles, Paris, France. Traveled to Galerie Felix Handschin, Basel, Switzerland and Galleria Alexandre Iolas, Milan, Italy as “The Dream Machine”
“Niki de Saint Phalle: Nana Power,” La Hune, Paris
Galerie Felix Handschin, Basel
“Niki de Saint Phalle zeigt neue Objekte und Serigraphien,” Gimpel & Hanover Galerie, Zürich
1971 “Niki de Saint Phalle: Serigraphien und kleine Skulpturen,” Kammerkunsthalle, Bern, Switzerland
“Niki de Saint Phalle: Serigrafie – Sculture,” La Galleria – Cavalieri Hilton, Rome, Italy
“Niki de Saint Phalle: Nana Power Polykroma Skulpturer,” Svensk-Franska Konstgallerier, Stockholm, Sweden
“Niki de Saint Phalle: ‘The Devouring Mothers’ and Other Sculptures,” Galerie Espace, Amsterdam
“Niki de Saint Phalle: New Multiples & Graphics,” Galerie Seriaal, Amsterdam
1972 “Niki de Saint Phalle: Les funérailles du père,” Galerie Alexandre Iolas, Paris
“Niki de Saint Phalle: Niki avant les Nanas, oeuvres de 1963 et 1964,” Galerie Bonnier, Geneva
“Niki de Saint Phalle: The Devouring Mothers,” Gimpel Fils, London. Traveled to Gimpel & Weitzenhoffer Gallery, New York
1974 “Niki de Saint Phalle: Projets et réalisations d’architecture,” Galerie Alexandre Iolas, Paris
“Niki de Saint Phalle: Skulpturen, Zeichnungen, Graphik, Ballon-Nanas,” Galerie Dr. Ernst Hauswedell, Baden-Baden, Germany
1975 “Niki de Saint Phalle,” exhibition organized in association with the 1975 Festival d’Arles in the Romanesque rooms at the Monastère de Saint-Trophime, Arles, France
“Festival Europalia-France 1975,” Palais des Beaux-Arts, Brussels, Belgium
“Niki de Saint Phalle: Silkscreens,” Gimpel & Weitzenhoffer Gallery, New York
1976 “Beelden, modellen en maquettes van Niki de Saint Phalle,” Museum Boymans-van Beuningen, Rotterdam, Netherlands
“Niki de Saint-Phalles sculpturer,” Nordjyllands Kunstmuseum, Aalborg, Denmark
“Niki de Saint Phalle,” Galerie Bonnier, Geneva
1977 “Niki de Saint Phalle: Sculptures and Graphicsm” Gimpel & Weitzenhoffer Gallery, New York
1979 “Niki de Saint Phalle,” Watari Gallery, Tokyo, Japan
“Niki de Saint Phalle: Monumental Projects, Maquettes and Photographs,” Gimpel & Weitzenhoffer Gallery, New York. Traveled to Columbus Museum of Art, OH; Laumeier Sculpture Park, St. Louis, MI; Mandeville Art Gallery, University of California at San Diego, La Jolla, CA; Palm Springs Desert Museum, CA
1980 “Niki de Saint Phalle: Werke 1960-1980,” Galerie Bischofberger, Zürich
“Niki de Saint Phalle: Objekte-Grafiken,” Bawag Fondation, Vienna, Austria
“Niki de Saint Phalle: Das graphische Werk 1968–1980. Figuren,” Ulm Museum, Ulm, Germany
“L’exposition retrospective de Niki de Saint Phalle,” Musée National d’Art Moderne, Centre Georges Pompidou, curated by Pontus Hulten and Jean-Yves Mock, Paris. Traveled to Wilhelm-Lehmbruck-Museum, Duisburg, Germany; Neue Galerie, Linz, Austria; Nuremberg Kunsthalle, Nuremberg, Germany; Haus am Waldsee, Berlin, Germany; Hanover Kunstmuseum with Sprengel Collection, Hanover, Germany; Moderna Museet, Stockholm

- “Niki de Saint Phalle (Space Niki Collection),” Space Niki, Tokyo. Part 1: “Prints Nana Power,” Part 2: “Posters and Film “Daddy,” Part 3: “Prints ‘Ich’ etc,” Part 4: “Newly Imported Prints,” Part 5: “Portraits and Film “Daddy,” Part 6, “Sculptures”
- 1981 “Niki de Saint Phalle,” Galerie Samy Kinge, Paris
- 1982 “Niki de Saint Phalle: Nana Object,” Watari Gallery, Tokyo
 “Niki de Saint Phalle: New Works (My Skinnies),” Gimpel & Weitzenhoffer Gallery, New York
 “My Skinnies,” Gimpel Fils, London
 “Niki de Saint Phalle,” Galerie Colette Creuzevault, Paris
 “Niki de Saint Phalle,” Space Niki, Tokyo
- 1983 “Niki de Saint Phalle: Sculptures et lithographies,” Galerie Esperanza, Montreal, Quebec, Canada
- 1985 “Niki de Saint Phalle 1962–1980: Retrospektive,” Galerie Klaus Littmann, Basel
 “Niki de Saint Phalle,” Casino Knokke, Knokke-le-Zoute, Belgium
 “Niki de Saint Phalle: The Tarot,” Gimpel Fils, London
 “Niki de Saint Phalle: New Sculptures Based on ‘The Tarot’,” Gimpel & Weitzenhoffer Gallery, New York
- 1986 “Niki de Saint Phalle (Space Niki Collection): sculptures prints drawings films video performance talk-session,” Space Niki & Sagacho Exhibition Space, Tokyo
 Niki de Saint Phalle (Space Niki Collection): Prints,” Space Niki, Tokyo
 “Niki de Saint Phalle (Space Niki Collection),” exhibition organized by Space Niki at Seibu Department Store, Ohtsu, Japan
 “Cinq Vases par Niki de Saint Phalle,” Galerie Colette Creuzevault, Paris
 “Niki de Saint Phalle: Veistoksja ja reliefjä / Sculptures and reliefs,” Kaj Forsblom Gallery, Helsinki, Finland
- 1987 “Niki de Saint Phalle: Bilder – Figuren – Phantastische Gärten,” Kunsthalle der Hypo-Kulturstiftung, Munich
 “Niki de Saint Phalle: Skulpturen, Lithographien, Objekte,” Artcurial, Munich
 “Niki de Saint Phalle: Oeuvres récentes,” Galerie Bonnier, Geneva
 “Fantastic Vision: Works by Niki de Saint Phalle,” Nassau County Museum of Art, curated by Phyllis Stigliano and Janice Parente, Roslyn, NY
- 1988 “Niki de Saint Phalle: The Wounded Animals,” Gimpel Fils, London
 “Sculptures by Niki de Saint Phalle,” The Blackfriars, presented by The Canterbury Theatre and Festival Trust, Canterbury, England
- 1989 “Niki de Saint Phalle: Oeuvres des années 80,” Galerie de France and JGM, Paris. Traveled to Palais Bénédictine, Fécamp, France; Zoumboulakis Galleries, Athens, Greece
 “Magic Tree Fountain,” Schneider Children’s Hospital, Long Island, NY
- 1990 “Niki de Saint Phalle,” Galerie Wolfgang Ketterer, Munich
 “Niki de Saint Phalle: Tirs ... et autres révoltes 1961–1964,” JGM Galerie and Galerie de France, Paris
 “Niki de Saint Phalle: Last Night I Had a Dream,” Guy Pieters Gallery, Knokke-le-Zoute, Belgium
 “Niki de Saint Phalle: New Sculptures,” Gimpel & Weitzenhoffer Gallery, New York
 “Niki de Saint Phalle: Lutte contre le sida,” Musée des Arts Décoratifs, Paris
- 1991 “Niki de Saint Phalle: Sculptures,” Hokin Gallery, Palm Beach, FL
 “Niki de Saint Phalle: Skulpturen und Grafik,” Galerie Artcuriel, Munich
 “Niki de Saint Phalle au Château d’Arsac,” Château d’Arsac, Margaux, France
 “Gods,” Gimpel Fils, London
 “Niki de Saint Phalle: Oeuvres récentes,” Guy Pieters Gallery, Knokke-le-Zoute, Belgium
 “Niki de Saint Phalle: Signierte Original-Serigraphien,” Galerie Hochwacht, Winterthur, Switzerland
- 1992 “Niki de Saint Phalle: SIDA ... Aids,” Galerie Reinhausen des Wilhelm Lehmbruck Museums Duisburg, Duisburg, Germany
 “Niki de Saint Phalle,” Kunst- und Ausstellungshalle, Bonn, Germany. Traveled to McLellan Galleries, Glasgow, Scotland as “Niki de Saint Phalle: Her life and art,” and Musée d’Art Moderne de la Ville de Paris, France as “Niki de Saint Phalle: L’invitation au musée”
- 1993 “Le Cirque de papier de Niki,” Casino Knokke, Knokke-le-Zoute, Belgium
 “Niki de Saint Phalle,” Salle Attane, Saint-Yrieix-la-Perche, France
 “Niki de Saint Phalle,” Gallery Delaive, Amsterdam
 “Niki de Saint Phalle: Oeuvres choisies,” Galerie Bonnier, Geneva
 “Niki de Saint Phalle,” Freitagsgalerie Imhof, Solothurn, Switzerland
 “Niki de Saint Phalle,” Musée de l’Art et de l’Histoire, Fribourg, Switzerland
- “Les Footballers,” Musée Olympique, Lausanne, Switzerland
- 1994 “Niki de Saint Phalle,” Dimensions Gallery, Taipei, Taiwan
 “Niki de Saint Phalle,” Niki Museum, Nasu, Japan
 “Niki de Saint Phalle: Tableaux éclatés + sculptures,” Maxwell Davidson Gallery & James Goodman Gallery, New York
- “Niki de Saint Phalle,” Galerie Bürki, Ostermundigen, Switzerland
- 1995 “Niki de Saint Phalle,” à travers la ville, Luxembourg
 “Niki de Saint Phalle,” Munich
 “Niki de Saint Phalle: Skulpturen, Gouachen, Serigraphie, Lithographien,” Galerie Kornfeld, Bern
 “Niki de Saint Phalle,” Museo Rufino Tamayo, Mexico City, Mexico. Traveled to Museo de Arte Contemporaneo de Caracas Sofia Imber, Caracas, Venezuela; Museo de Arte Moderno, Bogotá, Columbia; Fundação Casa França-Brasil, Rio de Janeiro, Brazil; Pinacoteca do Estado, São Paulo, Brazil; Museo Nacional de Bellas Artes, Buenos Aires, Argentina; Sala de Exposiciones Edificio CTC, Santiago de Chile, Chile
- 1996 “Niki de Saint Phalle,” Galerie Voight, Nuremberg
 “Niki de Saint Phalle: Graphik und Skulpturen,” Kunstkabinett, Regensburg, Germany. Traveled to Galerie Schönenberger, Kirchberg, Germany; Galerie Wild, Frankfurt, Germany
 “Niki de Saint Phalle,” Galerie Rafael Vostell, Berlin
- 1997 “Niki de Saint Phalle + Jean Tinguely,” Kunst Raum, Bayreuth, Germany
 “I Tarocchi di Niki de Saint Phalle,” Polveriera Guzman, Orbetello, Italy
 “Niki de Saint Phalle,” Kunstverein, Wolfsburg, Germany
 “Niki de Saint Phalle,” Galerie Kornfeld, Bern. Traveled to Galerie Kornfeld, Zurich
- 1998 “Niki de Saint Phalle,” Galerie Delaive, Amsterdam
 “Niki de Saint Phalle – Neue Graphik,” Kleine Galerie, Ingelheim, Germany
 “Niki de Saint Phalle: Insider / Outsider World Inspired Art,” Mingei International Museum, San Diego, CA
 “Niki de Saint Phalle – Céramiques et mosaïques,” Galerie Bonnier, Geneva
- 1999 “Niki de Saint Phalle,” Espace Jean Tinguely – Niki de Saint Phalle, Fribourg, Switzerland
 “Traces,” JGM Galerie, Paris
 “Niki de Saint Phalle – Liebe, Protest, Phantasie,” Ulmer Museum, Ulm. Traveled to Ludwigshafen-am-Rhein, Germany and Kunstalle un Emden, Germany
- 2000 “La Fête. Die Schenkung Niki de Saint Phalle. Werke aus den Jahren 1952–2001,” Sprengel Museum, Hannover, Germany. Traveled to Museum Jean Tinguely, Basel as “Niki de Saint Phalle: Werke aus den Jahren 1952–2001”
- 2001 “Niki de Saint Phalle: La vie joyeuse des objets,” Musée de la publicité, Union des Arts Décoratifs, Paris
 “Niki de Saint Phalle,” Wetterling Gallery, Stockholm
 “Niki de Saint Phalle: Les dieux de la musique et du sport,” Ecuries Saint-Hugues de Cluny, Cluny, France. Traveled to Le Consortium Dijon, Dijon, France
- 2002 “Niki de Saint Phalle: La donation,” Musée d’Art Moderne et d’Art Contemporain (MAMAC), Nice, France
 “Les Niki de Saint Phalle,” Musée Mandet, Riom, France
 “Von Niki Mathews zu Niki de Saint Phalle – Gemälde der 1950er Jahre,” Sprengel Museum, Hannover
- 2003 “Niki de Saint Phalle,” Ernst Múzeum, Budapest, Hungary. Traveled to Galeria Zacheta, Warsaw, Poland; National Museum, Krakow, Poland
 “Niki de Saint Phalle,” Brandts Klaedefabrik, Odense, Denmark
 “Champs Libres. Zoo Exquis: L’arche Fantastique de Niki de Saint Phalle,” Eglise de Pontgivart, Aumenancourt, France
 “Niki de Saint Phalle: de la couleur aux écrites,” Médiathèque Jules Verne, Saint Jean de Védas, France
 “Niki de Saint Phalle,” Herbert Palmer Gallery, Los Angeles
 “Hommage à Niki de Saint Phalle,” Jardins du Palais Royal. Organized by JGM Galerie, Paris
 “Niki de Saint Phalle: Die Geburt der Nanas,” Sprengel Museum, Hanover. Traveled to KunstHaus Wien, Vienna, Austria
- “Niki de Saint Phalle Remembered,” Mingei International Museum, Escondido, CA
- 2004 “Nanas depuis 1965,” JGM Galerie, Paris
 “Niki de Saint Phalle: California Dreaming,” California Center for the Arts Escondido Museum, Escondido, CA
 “Niki de Saint Phalle, des assemblages aux oeuvres monumentales,” Musée des Beaux-Arts, Angers, France
 “Seltene Graphiken von Niki de Saint Phalle,” Galerie & Edition Bode GmbH, Nuremberg

- “Niki de Saint Phalle – Skulpturen – Grafik – Unikate,” Fischerplatz Galerie, Ulm
- “Niki de Saint Phalle,” Galerie Hafenrichter & Flügel (formerly Galeria2000, Nuremberg)
- “Niki de Saint Phalle – Early works & prints from the collection of the MAMAC, Nice,” Kunsthalle Nürnberg, Germany. Traveled to De Zonnehof, Amersfoort, Netherlands
- 2005 “Niki de Saint Phalle: Der Tarot-Garten – Skulpturen, Entwürfe, Zeichnungen,” Sprengel Museum, Hannover
- “Nana Power: Die Frauen der Niki de Saint Phalle,” Schloss Neuhardenberg, Berlin
- “Niki de Saint Phalle,” Les Jardins de Poppy, Le Thor, France
- “Niki de Saint Phalle & Jean Tinguely: Plakate,” Versicherungskammer Bayern, Munich. Traveled to Kunstmuseum Heidenheim, Heidenheim, Germany; Museum für Kunst und Gewerbe, Hamburg, Germany
- “Niki & Jean, l’Art et l’Amour,” Sprengel Museum (a collaboration between the Sprengel Museum Hannover, Jean Tinguely Museum Basel and Niki Charitable Art Foundation California), Hanover. Traveled to Museum Tinguely, Basel; Centro Atlántico de Arte Moderno, Gran Canaria Island, Spain; Ulmer Museum, Ulm
- “Niki de Saint Phalle: Tableaux Eclatés,” California Center for the Arts Escondido Museum, Escondido, CA
- “Niki de Saint Phalle: Grafik und Objekte,” Galerie am Dom, Wetzlar, Germany
- 2006 “Niki de Saint Phalle: Retrospective,” Daimaru Museum Umeda, Japan. Traveled to Daimaru Museum Tokyo; Nagoya City Art Museum, Japan; Fukui City Art Museum, Japan
- “Niki in the Garden: The Extraordinary Sculptures of Niki de Saint Phalle,” Atlanta Botanical Garden, GA. Traveled to Garfield Park Conservatory, Chicago, IL; Missouri Botanical Garden, St. Louis, MI
- “Niki de Saint Phalle: Vive l’amour!” Palais Bénédicte, Fécamp, France
- “Niki de Saint Phalle: L’œuvre graphique,” Espace Jean Tinguely – Niki de Saint Phalle, Fribourg, Switzerland
- “Dreams of Midsummer: Works of Niki de Saint Phalle,” Macao Museum of Art, Macao, Republic of China. Traveled to Musée National d’Art Contemporain de Corée, Seoul, Korea as “Niki de Saint Phalle”; National Museum of History, Taipei, Taiwan as “The World and Fantasy of Niki de Saint Phalle”; National Taiwan Museum of Fine Arts, Taichung, Taiwan as “The World and Fantasy of Niki de Saint Phalle”
- “Niki de Saint Phalle: Sculpture,” Nohra Haime Gallery, New York
- 2007 “Tarot-Garten Niki de Saint Phalle – Photographien,” Galerie im Turm der Kurfürstlichen Burg zu Eltville, Eltville, Germany
- “Niki de Saint Phalle chez Deyrolle: Curosités naturelles,” Galerie Deyrolle, Paris
- “Niki de Saint Phalle,” Fischerplatz Galerie, Ulm
- “Niki in the Garden,” Garfield Park Conservatory, Chicago, IL
- 2007-08 “Niki de Saint Phalle: A Spiritual Path,” California Center for the Arts, Escondido, CA
- 2008 “Niki de Saint Phalle,” Tate Liverpool, Liverpool, England
- “Hommage à Niki de Saint Phalle: Le Jardin des Tarots,” La Coupole, Paris, France
- “Niki in the Garden,” Missouri Botanical Garden, St. Louis, MO
- “Wunderkammer: Figur und Raum,” Sprengel Museum, Hannover, Germany
- “WACK! Art and the Feminist Revolution,” Long Island City, NY
- “Louis Armostrong,” Ringling Museum of Art, Sarasota, FL
- “Niki de Saint Phalle: A Spiritual Path,” California Center for the Arts, Escondido, CA
- “Niki & Jean: Kunst und Liebe,” Ulmer Museum, Ulm, Germany
- 2008-09 “The Mouse House: Works from the Olga Hirshhorn Collection,” Naples Museum of Art, Naples, FL
- “Les boîtes à secrets de Niki,” Musée en Herbe, Paris
- 2009 “Children’s Exhibition: Les Boîtes à Secrets de Niki,” La Vallée de la Jeunesse, Lausanne, Switzerland
- “Niki de Saint Phalle: Joie de Vivre – Alegria de Viver,” Fundação Eugénio de Almeida, Évora, Portugal
- “Innovations in the Third Dimension: Sculpture of Our Time,” Bruce Museum, Greenwich, CT
- “Children’s Exhibition: Les Boîtes à Secrets de Niki,” Musée en Herbe, Paris, France
- “WACK! Art and the Feminist Revolution,” Vancouver Art Gallery, Vancouver, BC
- “The Mouse House: Works from the Olga Hirshhorn Collection,” Naples Museum of Art, Naples, FL
- 2009-10 “Le scatole dei segreti di Niki de Saint Phalle,” Museo in Erba, Bellinzona, Switzerland
- “Niki de Saint Phalle,” Fondazione Roma Museo, Rome, Italy
- 2010 “Niki de Saint Phalle,” The Armory Modern, Nohra Haime Gallery, New York
- “Niki de Saint Phalle,” Château de Malbrouck, Metz, France
- “Niki de Saint Phalle (outdoor sculpture installation),” National Museum of Women in the Arts, Washington, DC
- “Niki de Saint Phalle & Jean Tinguely: Lifetime of Art Together and Apart,” Bechtler Museum of Modern Art, Charlotte, NC
- 2010-11 “Seductive Subversion: Women Pop Artists, 1958–1968,” Brooklyn Museum, NY
- 2011 “Niki de Saint Phalle, Outside-In,” SCHUNCK Glaspaleis, Heerlen, Netherlands
- “Niki de Saint Phalle: Fairytales – Dreams – Myths,” Kunsthalle Würth Schwäbisch Hall, Künzelsau, Germany
- “Animal,” Espace Jean Tinguely-Niki de Saint Phalle, Fribourg, Switzerland
- “Niki de Saint Phalle: Play with me,” Kunsthalle Würth, Schwäbisch Hall, Künzelsau, Germany
- “Niki de Saint Phalle: Play with me,” Max Ernst Museum, Brühl, Germany
- “Niki de Saint Phalle: Creation of a New Mythology,” Bechtler Museum of Modern Art, Charlotte, NC
- “Niki de Saint Phalle: A Retrospective Exhibition 1960-2004,” Nohra Haime Gallery, New York
- “Nana,” Galerie Bel’Art, Stockholm, Sweden
- “Niki de Saint Phalle,” Guy Pieters Galerie, Paris
- 2012 “Niki on Park Avenue,” Park Avenue from 52nd to 60th Street, Nohra Haime Gallery, New York
- “Niki de Saint Phalle,” Vicky David Gallery, New York
- “Niki de Saint Phalle: The Girl, the Monster and the Goddess,” Moderna Museet, Malmö, Sweden. Travels to Moderna Museet, Stockholm, Sweden
- “Niki de Saint Phalle: Eine Retrospektive. Gemälde, Skulpturen und Arbeiten auf Papier,” Samuelis Baumgarte Galerie, Bielefeld, Germany
- “Niki de Saint Phalle: The Eric and Jean Cass Gift,” Gallery of Modern Art, Glasgow, UK
- 2013 “Niki de Saint Phalle en jouel,” Galerie GP & N Vallois, Paris. Travels to Ahlers Stiftung/Ahlers Pro Arte, Hannover, Germany
- “Niki de Saint Phalle,” Espace culturel Paul Bédou, Milly-la-Forêt, France
- 2014-15 “La Bande à Niki,” Musée en Herbe, Paris
- “Niki de Saint Phalle,” Grand Palais, Paris
- 2015 “Niki de Saint Phalle,” Guggenheim Museum, Bilbao

Fotografia © Laura Pabst Maloney y Nohra Haime.
 © 2015 Niki Charitable Art Foundation, todos los derechos reservados.

RHINOCEROS, 1995
 serigrafía
 43 x 56 cm. 16.9 x 22.05 in.



*œuvre d'artiste
XXIII/XXV*

Niki St. Phalle

NH
GALERIA