

L.B.J.&C Lafayette Head Start



2025-2026 Daily Schedule Classroom A

7:00 a.m.-8:00 a.m.

Teacher Planning Time

8:00 a.m.-8:15 a.m.

Greet Parents and Children/ Free Choice
Activities/Individualization

8:15 a.m.-8:30 a.m.

Large Group Time/ Preparation For
Family Style Meal Service

8:30 a.m.-9:00 a.m.

Breakfast

9:00 a.m.-9:35 a.m.

Clean-Up/Free Choice
Activities/Individualization/Brush
Teeth

9:35a.m.-10:25 a.m.

**Outdoor Play (Gross Motor
Activities)**

10:25 a.m.-11:10 a.m.

Free Choice Activities/Individualization

11:10 a.m.- 11:30 a.m.

Transition/Large Group Time/Preparation For
Family Style Meal Service

11:30 a.m.-12:00 p.m.

Lunch

12:00 p.m.-12:15 p.m.

Clean-up/Brush Teeth/Large
Group Time

12:15 p.m.-12:30 p.m.

Small Group Activities

12:30 p.m.-1:45 p.m.

Transition to Rest Time/Rest Time

1:45 p.m.-2:00 p.m.

Transition to Snack

2:00 p.m.-2:15 p.m.

Snack

2:15 p.m.-2:30 p.m.

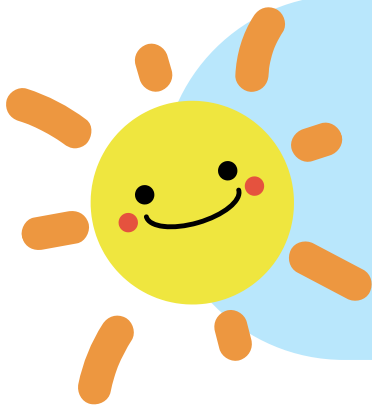
Clean-up/Departure

Inclement Weather Schedule:

Gross Motor Moderate to Vigorous Physical
Activities in the Big Room or Structure Gross
Motor Activities in Classroom



Revised 7/25



**L.B.J.&C Lafayette
Head Start
2025-2026 Daily Schedule
Classroom B**

7:00 a.m.-8:00 a.m.	Teacher Planning Time
8:00 a.m.-8:15 a.m.	Greet Parents and Children/ Free Choice Activities/Individualization
8:15 a.m.-8:30 a.m.	Large Group Time/ Preparation For Family Style Meal Service
8:30 a.m.-9:00 a.m.	Breakfast
9:00 a.m.-9:35 a.m.	Clean-Up/Free Choice Activities/Individualization/Brush Teeth
9:35a.m.-10:25 a.m.	Outdoor Play (Gross Motor Activities)
10:25 a.m.-11:10 a.m.	Free Choice Activities/Individualization
11:10 a.m.- 11:30 a.m	Transition/Large Group Time/Preparation For Family Style Meal Service
11:30 a.m.-12:00 p.m.	Lunch
12:00 p.m.-12:15 p.m.	Clean-up/Brush Teeth/Large Group Time
12:15 p.m.-12:30 p.m.	Small Group Activities
12:30 p.m.-1:45 p.m.	Transition to Rest Time/Rest Time
1:45 p.m.-2:00 p.m.	Transition to Snack
2:00 p.m.-2:15 p.m.	Snack
2:15 p.m.-2:30 p.m.	Clean-up/Departure

Inclement Weather Schedule:

Gross Motor Moderate to Vigorous Physical
Activities in the Big Room or Structure Gross
Motor Activities in Classroom



Revised 7/25



L.B.J.&C Lafayette Head Start



2025-2026 Daily Schedule Classroom C

7:00 a.m.-8:00 a.m.

8:00 a.m.-8:15 a.m.

8:15 a.m.-8:30 a.m.

8:30 a.m.-9:00 a.m.

9:00 a.m.-10:15 a.m.

10:15 a.m.-10:25 a.m.

10:25 a.m.-11:15 a.m.

11:10 a.m.-11:30 a.m.

11:30 a.m.-12:00 p.m.

12:00 p.m.-12:15 p.m.

12:15 p.m.-12:30 p.m.

12:30 p.m.-1:45 p.m.

1:45 p.m.-2:00 p.m.

2:00 p.m.-2:15 p.m.

2:15 p.m.-2:30 p.m.

Teacher Planning Time

Greet Parents and Children/ Free Choice
Activities/Individualization

Large Group Time/ Preparation For
Family Style Meal Service

Breakfast

Clean-Up/Free Choice
Activities/Individualization/Brush
Teeth

Clean-up/Large Group Time

Outdoor Play (Gross Motor
Activities)

Transition/Large Group Time/Preparation For
Family Style Meal Service

Lunch

Clean-up/Brush
Teeth/Large Group Time

Small Group Activities

Transition to Rest Time/Rest Time

Transition to Snack

Snack

Clean-up/Departure

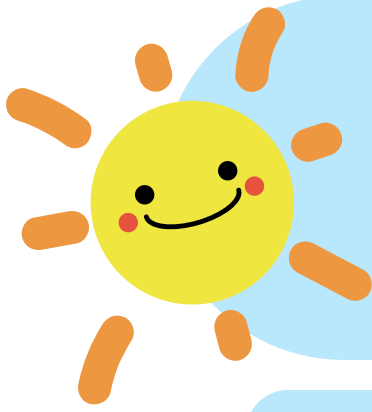
Inclement Weather Schedule:



Gross Motor Moderate to Vigorous Physical
Activities in the Big Room or Structure Gross
Motor Activities in Classroom



Revised 7/25



L.B.J.&C Lafayette Head Start



2025-2026 Daily Schedule Classroom D

7:00 a.m.-8:00 a.m.	Teacher Planning Time
8:00 a.m.-8:15 a.m.	Greet Parents and Children/ Free Choice Activities/Individualization
8:15 a.m.-8:30 a.m.	Large Group Time/ Preparation For Family Style Meal Service
8:30 a.m.-9:00 a.m.	Breakfast
9:00 a.m.-10:15 a.m.	Clean-Up/Free Choice Activities/Individualization/Brush Teeth
10:15 a.m.-10:25 a.m.	Clean-up/Large Group Time
10:25 a.m.-11:15 a.m.	Outdoor Play (Gross Motor Activities)
11:10 a.m.-11:30 a.m.	Transition/Large Group Time/Preparation For Family Style Meal Service
11:30 a.m.-12:00 p.m.	Lunch
12:00 p.m.-12:15 p.m.	Clean-up/Brush Teeth/Large Group Time
12:15 p.m.-12:30 p.m.	Small Group Activities
12:30 p.m.-1:45 p.m.	Transition to Rest Time/Rest Time
1:45 p.m.-2:00 p.m.	Transition to Snack
2:00 p.m.-2:15 p.m.	Snack
2:15 p.m.-2:30 p.m.	Clean-up/Departure

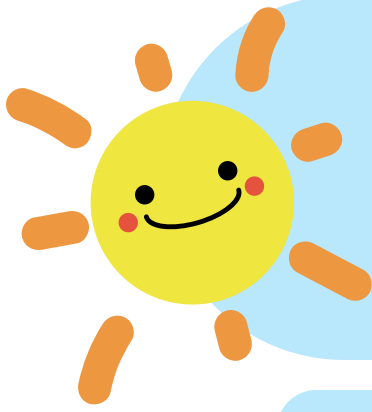
Inclement Weather Schedule:



Gross Motor Moderate to Vigorous Physical Activities in the Big Room or Structure Gross Motor Activities in Classroom



Revised 7/25



L.B.J.&C Lafayette Head Start



2025-2026 Daily Schedule Classroom E

7:00 a.m.-8:00 a.m.	Teacher Planning Time
8:00 a.m.-8:15 a.m.	Greet Parents and Children/ Free Choice Activities/Individualization
8:15 a.m.-8:30 a.m.	Large Group Time/ Preparation For Family Style Meal Service
8:30 a.m.-9:00 a.m.	Breakfast
9:00 a.m.-9:10 a.m.	Clean-up/Large Group Time
9:10 a.m.-9:35 a.m.	Outdoor Play (Gross Motor Activities)
9:35 a.m.-10:00 a.m.	Transition/Small Group Activities
10:00 a.m.- 11:10 a.m.	Free Choice Activities/Individualization/Brush Teeth
11:10 a.m.-11:30 p.m.	Transition/Large Group Time/Preparation For Family Style Meal Service
11:30 a.m.-12:00 p.m.	Lunch
12:00 p.m.-12:15 p.m.	Clean-up/Brush Teeth/Large Group Time
12:15 p.m.-12:45 p.m.	Outdoor Play (Gross Motor Activities)
12:45 p.m.-1:45 p.m.	Transition to Rest Time/Rest Time
1:45 p.m.-2:00 p.m.	Transition to Snack
2:00 p.m.-2:15 p.m.	Snack
2:15 p.m.-2:30 p.m.	Clean-up/Departure

Inclement Weather Schedule:



Gross Motor Moderate to Vigorous Physical Activities in the Big Room or Structure Gross Motor Activities in Classroom



Revised 7/25