

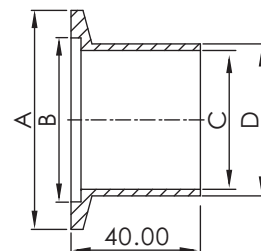
# KF Fittings



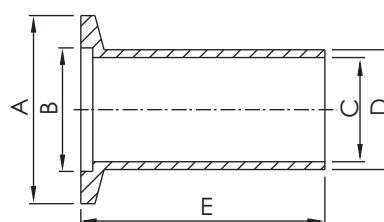
## KF BUTT WELD STUB FLANGES, LONG

\*Material: SS 304L

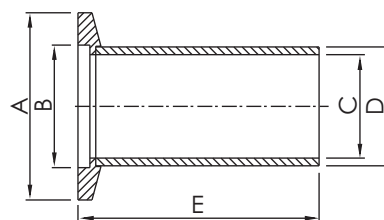
Part Number	Flange Size	A	B	C	D
KF-BWL-10	KF10	30.00	12.20	9.40	12.70
KF-BWL-1016	K10/16	30.00	17.20	9.40	12.70
KF-BWL-16	KF16	30.00	17.20	15.75	19.05
KF-BWL-25	KF25	40.00	26.20	22.10	25.40
KF-BWL-40	KF40	55.00	41.20	34.90	38.10
KF-BWL-50	KF50	75.00	52.20	47.60	50.80



**K F  
DN**



**Figure 1**  
Machined



**Figure 2**  
Welded

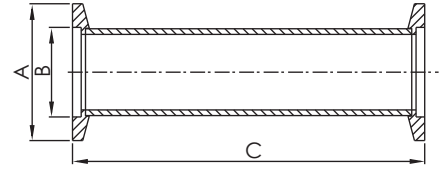
## KF HALF NIPPLES

\*Material: SS 304L

Part Number	Flange Size	Figure	A	B	C	D	E
KF-HN-10	KF 10	1	30.00	12.20	9.40	12.70	31.75
KF-HN-16	KF 16	1	30.00	17.20	15.80	19.10	29.21
KF-HN-16-1	KF 16	1	30.00	17.20	15.80	19.10	38.10
KF-HN-25	KF 25	2	40.00	26.20	22.10	25.40	51.56
KF-HN-25-1	KF 25	1	40.00	26.20	22.10	25.40	51.80
KF-HN-40	KF40	2	55.00	41.20	34.80	38.10	60.96
KF-HN-40-1	KF40	2	55.00	41.20	34.80	38.10	62.50
KF-HN-50	KF50	2	75.00	52.20	47.50	50.80	80.01
KF-HN-50-1	KF50	2	75.00	52.20	47.50	50.80	81.50

\*Note: SS 316L or Aluminum Material Available on Request.

# KF Fittings



## KF FULL NIPPLES

\*Material: SS 304L

\*Tube Finish: Bead Blast

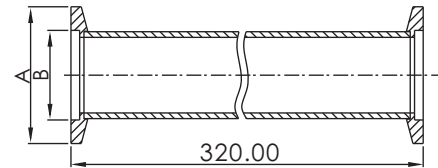
Part Number	Flange Size	A	B	C
KF-FN-10	KF10	30.00	12.20	63.50
KF-FN-16	KF16	30.00	17.20	58.40
KF-FN-25	KF25	40.00	26.20	103.10
KF-FN-40	KF40	55.00	41.20	121.90
KF-FN-50	KF50	75.00	52.20	160.00

**KF  
DN**

## KF FULL NIPPLES, LONG

\*Material: SS 304L

\*Tube Finish: Bead Blast



Part Number	Flange Size	A	B
KF-FNL-16	KF16	30.00	17.20
KF-FNL-25	KF25	40.00	26.20
KF-FNL-40	KF40	55.00	41.20
KF-FNL-50	KF50	75.00	52.20

\*Note: SS 316L Material Available on Request.

\*Note: Polished and Electro- Polished Tube Finishes Available on Request.