

*Since 1948 Exploring the Wonderful World of Beekeeping Together*

## **The Bee Buzzer**

*Monthly Publication of the*

### **Northeastern Kansas Beekeepers' Association**

VOLUME 77, NUMBER 4

EDITOR: TIM MARSHALL

April 2025

#### **General Meeting**

**Monday, April 21st, 2025 (7:00 p.m.)**

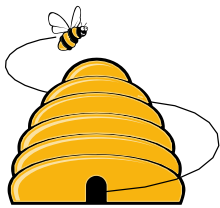
Douglas County Fairgrounds Bldg. 21N

2110 Harper St., Lawrence KS

**Main Program: Bee Dances by Becky Tipton**— Bees have the amazing ability to communicate with each other. They communicate through dance language and with pheromones. Becky Tipton will be our presenter and help us understand the basics of bee communication. Join us for this presentation and to have questions answered about your new hives.

#### **Beelines**

**By President Cheryl Burkhead**



April must be one of the busiest and most exciting months for beekeepers. Those that are new to beekeeping will be getting a package or a nuc to install into their new equipment. More seasoned beekeepers will have a sense of relief that their bees have survived another winter and will be manipulating colonies to equalize, give the colony room to grow, and to prepare for splitting. Swarm season is quickly approaching.

There is much to learn about bees, and you will continuously be learning as you work your colonies. I urge you to attend our monthly club meetings. The Open Apiaries are a wonderful means to gain skill and confidence and something that wasn't available when I started beekeeping. Take advantage of this invaluable learning opportunity by getting into a colony with a seasoned beekeeper.

I encourage you to make a few extra splits this year for yourself or for others; using a mated queen, a ripe queen cell, or perhaps a queen that you've grafted. Learning how to graft queens is a game-changer and it is an invaluable skill. We will be having a queen rearing class at our Fun Day event in early June. Learn how to make a few summer increase nucs. There is no beekeeping emergency when you have resource colonies at your disposal. Dr. Jamie Ellis has a great article about utilizing nucs in the apiary.

<https://edis.ifas.ufl.edu/publication/IN869>

#### **2025 Meeting Dates:**

- April 13<sup>th</sup>, Open Apiary Making a Split at Pendleton's 1:00pm
- April 21<sup>st</sup>, Open Apiary 5pm Hive Inspections prior to Monthly Meeting at 7:00pm (Bldg. 21)
- April 26<sup>th</sup>, Open Apiary Hive Inspections at Pendleton's at 10:00am led by Tim Gogolski



- May 1st, Joli and Cecil's Open Apiary in Spring Hill at 5:00pm
- May 4th, Open Apiary Hive inspections at Pendleton's at 1:00pm
- May 10th, Open Apiary Hive Inspections at Pendleton's at 10:00am led by Tim Gogolski
- May 19<sup>th</sup>, Open Apiary 5pm, Monthly Meeting at 7:00pm (**Location TBD-not at DOCO Fairgrounds**)
- June 1st, Open Apiary Hive Inspections at Pendleton's at 1:00pm
- June 7th – Bee Funday! All day! At Fairgrounds
- June 9th, Open Apiary Hive Inspections at Pendleton's at 5:00pm led by Kristi Sanderson
- June 12<sup>th</sup> (**2<sup>nd</sup> Thursday**), Joli and Cecil's Open Apiary in Spring Hill at 5:00pm



## Ol' Bee Gal

Steve and I teach a beginning beekeeping class in Topeka (Shawnee County). The class is offered through Sh. Co. Parks and Rec. It's a free class; open to the public. We teach it for free and Parks and Rec decided when we started (12+ years ago) to offer the class as community service – no fees! We have truly enjoyed the years of beekeepers and made some fantastic friends as well as taught folks who have grown into exceptional beekeepers. The ancient building that was our home at the Shawnee N. Community Park is being retired. The building, built around 1900, has a myriad of issues including not meeting ADA standards, plumbing problems exacerbated by the extreme cold, and a leaky roof. We have been relocated to the Victorian home on the grounds of Ward Meade Park. It is lovely but, we also had to change our meeting time to accommodate their schedule. If you plan to attend any of our classes, be sure to check my Facebook page for the latest information or email for a current schedule. We manage our class a little differently than the NEKBA classes, we start in February with bee biology and then follow the beekeeping year. Each month we try to focus on what is happening in the hives right then or what preparations are needed for the next month. It has worked well for us.

As I leave the beginning beekeeping classes, either through NEKBA or our Shawnee County classes, I always have little memory tags.... I should have mentioned this, or I hope they will remember that. There is just so much to learn and the first year can be overwhelming. No matter the planned topic for each class, we always take time to answer questions or discuss beekeeping current events. That's the most important reason to continue to come to our monthly meetings! This last month, I wish I had talked more about feeding your bees.

If you are beginning a new colony, (nuc, split, or package) you NEED to feed your bees. (1:1 sugar syrup for spring feeding.) Feeding stimulates the bees to draw wax. Our severe summer droughts have brought a halt to wax building early in the last few years. Wax building is a seasonal activity and once we are past the summer solstice, the bees naturally reduce their wax building. So, make wax while the time is right and feed to help the girls make the most that they can. Best practice is to feed until your new hive is ready to add a honey super. Then STOP feeding—you do not want sugar syrup in your honey super. In addition, feeding stimulates the queen egg laying. If you are introducing a new queen, feeding improves queen acceptance. Everyone gets along better when there is a little extra nectar available. As I am writing this, we have had a full week of less-than-optimal bee foraging weather. We've been cold, very windy, and even rainy. A new colony can starve without supplemental feed when foraging is so limited.

There are about a dozen different styles of bee feeders on the market, and I think we have tried them all. The commercial guys tend to favor division board feeders. They take the place of one or two frames inside the hive. You must completely open the hive to add feed. The bees tend to propolize them so completely that they are nearly impossible to remove. Bees can drown in them unless they have a good ladder system built in. But the commercial guys like them because they are easy to use.

Miller type feeders are the same size as a hive box and sit on top of the brood box. They hold a LOT of feed. But, if you fill them, they can become difficult to move when inspecting your hive (you should be doing those inspections every 7-10 days in the spring). If the bees quite taking the syrup, it can ferment or mold—throw it away if this happens. If you don't fill them too full, the Miller type feeder is a good choice.

We prefer contact feeders, either buckets or jars. These have access holes in the lid and when turned upside-down, a vacuum is created, and the syrup is sucked out by the bees. We like either of these because the feed is directly above the bees on either the top bars or over the opening in the inner cover. You can easily trade out another jar or bucket and minimally disturb the bees. The bees can access the feed in any weather. You do need another empty brood box to go over the feeder to protect it from the weather.

If you bought a beginning beekeeping kit, it likely came with an entrance feeder also known as a Boardman feeder. We do not particularly like these. They tend to drip and that can encourage robbing by other area hives. But they will work.

The worst feeding method, although still practiced by lazy beekeepers, is open feeding. A feed source is created some distance from the bee hives. Floats are added to the surface of the syrup and all area bees have a feeding frenzy. Open feeding is terrible for many reasons. First, it tends to incite robbing behavior. The bees are likely to attack your brand-new colony when the syrup runs dry. The weakest colony will get the least amount of syrup because the weakest colony has the fewest foragers. You really cannot accurately determine how much feed that new colony received. You are likely feeding neighborhood bees at the open feeding station. Sugar is expensive. I want to know that my sugar is going to my bees. Most importantly, open feeding stations spread varroa mites and the associated viruses. It is not healthy to open feed your bees. Five good reasons to never open feed.

For all the other fun and important facts that we forgot to mention during the beekeeping classes, join us each month for the next installment of beekeeping 101.

**Becky Tipton**



### **ASK QUINBY & REMI**

**Dear Quinby and Remi:** I just got home with my package of bees and the queen cage doesn't have any candy in it, what should I do?

**Quinby and Remi answer:** While some beekeepers say that the bees in the package and the queen have been together for several days and that the bees are used to the queen, that isn't quite true. The package situation is anything but normal- the bees were shaken out of a hive, combined with bees from multiple hives, traveled on a trailer to who knows where, fed by a little can of feed and then bounced sat in a store waiting for people to pick them up and take them home—maybe it's cold, rainy or snowy. Hardly a normal situation for bees to get used to a newly mated queen. We suggest that you install your package in your hive and keep your queen corked in the cage in the hive with the bees for about 4 days. That gives the bees and the queen time to get acquainted, and the bees can spread her pheromones around. On day 4, you can release the queen or if you are uncomfortable with that, then you can do the marshmallow thing, put in a marshmallow, after you take out the cork, the bees will chew through the marshmallow quite quickly. Your bees are expensive, you need to make sure what you do will have a greater chance of being successful. Also, feeding your bees help with queen acceptance.

**Dear Remi and Quinby:** I just don't get what to do with my nuc. Do I need to wait 4 days to release the queen? This was an actual question at the open apiary the other night (Quinby and I were at the fence listening).

**Remi and Quinby answer:** A nuc (a small colony) is 4-5 frames of bees and brood and the queen bees is already out of her cage and is laying eggs and should already have brood. It should also have pollen and some resource honey. That is what you are paying for. When you get home with your nuc, if you can't put it in your hive right away at least put it on top of the hive where it is to be installed, that way the bees will orient to that location. When you are ready to install your nuc, you will start with your single hive body, bottom board, feeder and lid, take out 5 center frames from your hive body and keeping your frames in the order that they are in, in the nuc, place them in the center of your hive body, add your feeder and feed. You'll feed until your hive body has 8 full frames, put your outer frames into the 2 and 9 space, push your frames close together. Add your 2nd hive body and continue feeding!

**Remi and Quinby suggest:** That you attend some of the open apiaries and make sure to plan to come to the Funday on June 7th. Get in the habit of attending the monthly meeting too!



### The NEKBA Beeyard

Join us this year at our Open Teaching Apiary (OTA) located at Pendleton's Country Market, 1446 E 1850 Rd., Lawrence KS 66046. Please use this link to sign up <https://www.signupgenius.com/go/10C054DA9A72CA2FAC70-55554696-open> check out our NEKBA website at [www.nekba.org](http://www.nekba.org) for more information and schedule changes. For questions call Joli at 913-593-3562.

OTA Dates (other dates may be added)

Sunday, April 13	1:00-3 Making Nucs & evaluating hives Joli & Cecil-with help
Monday, April 21	5-6:30 (Before the NEKBA meeting) Cecil Sweeney
Saturday, April 26	10am-12 Tim Gogolski
Sunday, May 4	1:00-3
Saturday, May 10	10am-12 Tim Gogolski
Monday, May 12	5:00-6:30
Sunday, June 1	1:00-3
Monday, June 9	5-6:30 Kristi Sanderson



### Open Teaching Apiary in Spring Hill

Join Joli Winer and Cecil Sweeney for mentoring sessions one day a month. Please call, text or email to secure your spot. Sessions start at 5:00 pm, about 2 hours. 19201 S Clare Rd Spring Hill KS 66083 913-593-3562 [heartlandhoneyks@gmail.com](mailto:heartlandhoneyks@gmail.com) 1st Thursday- May 1, June 12 (2nd Thursday), July 3, August 7, September 4, October 2 5-7pm

### Tips for April

- Check for ticks, they love beekeepers.
- • Wear as much protective clothing as makes you comfortable when working your hives. Work hives with slow, smooth movements. Jerky movements agitate the bees.
- Use your smoker each time you check your bees.
- Organize your bee tools in a toolbox so that you can always find them.
- Work each hive from the side or the back, out of the bee flight path.



### Monarch Watch Open House & Plant Fundraiser Announcement Saturday, 10 May 2025—8am to 2 pm. Monarch Watch, KU West Campus Lawrence, Kansas

Online ordering of plants will be enabled on or before April 22nd and we plan to schedule pickups for May 7, 8 and 10. Details will be posted as soon as they are available. We will have thousands of plants available via online ordering and local curbside pickup (or limited local delivery) in Lawrence, KS. To place an order, you must live in or be willing to travel to LAWRENCE, KANSAS (we cannot ship). These plants are ideal for starting butterfly gardens or adding to established gardens and can contribute to the health of monarch and pollinator populations.

For more information, please go to <https://monarchwatch.org/openhouse/>



## Honey Plants

Adequate and nutritional honey bee floral sources are important to a colony's health. Sufficient high-quality forage can help colonies overcome the ill effects of varroa mites and the viruses the mites expose your bees to. Sugar syrup is great for getting new colonies started or for emergency feeding, but it doesn't compare to the proteins and micronutrients that plants offer. A recent article by Alyssum Flowers in the Bee Culture Magazine (April 2025) called "Plan Now to Feed Bees...From Flowers" contains a list of highly nutritious forage plant species. A few of the species on this list that can be found in our growing zone are Clovers, Willows, Apples, Goldenrod,

Asters, Maples, Basswoods, Lindens, Blackberries, Rose of Sharon, Serviceberry, and Evening Primrose. During the cold spring weather, some of the most complete sources of pollen come from woody plants or trees.

Dandelions and Henbit are wonderful pollen sources for feeding larvae. Both began blooming in late March. Dandelion pollen, while lacking some key amino acids, is prolific and that makes it a valuable food source for colony build up if there are few other sources available to foragers.

Apples, ornamental and fruit bearing cherries, and plums have already started blooming. The nectar is great for colony build up and their pollen sources are very nutritious. Crabapples are also great nectar and pollen sources. They have begun blooming as well. Crabapples come in so many different varieties that they can offer a succession of blooms, especially in city landscapes.

Redbuds began blooming around the last week of March and produce creamy white pollen. This native tree can be found in rural areas and in cities.

Mid-April is the time for Amur Maples, Chokecherries, Black Cherries, and the invasive Asian Bush Honeysuckle. The Asian Bush Honeysuckle is cursed by many but loved by honey bees. In areas heavily infested with honeysuckles, honey bees can add a lot of weight to food stores during spring colony build up.

Clover nectar is the dominant contributor in the production of our honey crop in NE KS. The White Dutch Clover can begin blooming in April but typically it's early May when we see blooms. About two weeks after White Dutch Clover begins blooming the Yellow Sweet Clover will bloom. The Yellow Sweet Clover is followed by White Sweet Clover another two weeks later. Using the Rule of Seven, if your colonies are ready for honey supers when the clovers begin blooming, you want to add them then. Those that attended one of NEKBA's Beginning Beekeeping Classes learned about the Rule of Seven. When the colonies without drawn comb are actively working seven out of ten frames you can add a second brood box or a honey super.

It is always fun to pick up a few pollinator plants, shrubs, or a tree that will help fill gaps in our honey bees' forage. There are always spring plant sales throughout the area. Here are a few of the sales taking place this spring:

The Paola Plant Sale features pesticide free and locally grown assortment of plants, vegetables, herbs, and trees. This sale will be held April 24 from 9am– 5 pm, April 25 from 9 am-6 p.m., and April 26 from 9am– 3pm, at the Miami County Fairgrounds, Building 2, 401 Wallace Park Dr., Paola, KS 66071.

The Overland Park Arboretum and Botanical Garden will host its annual spring plant sale on April 25-27. The Arboretum is located at 8909 W. 179th Street, Overland Park, KS 66013. In the past, shoppers were able to choose from a large assortment of annuals, perennials, native flowers, as well as native trees and shrubs that aren't commonly offered elsewhere.

Shawnee County Master Gardeners will host a sale on Saturday, May 3, 2025, 9 am – noon. Agricultural Hall, 1 Expocentre Drive, Topeka, KS.

In the past, the Douglas County Master Gardeners' Native Plant Sale had coincided with Funday. But this year it will be held on Saturday, May 31st. 9AM – 1PM in the Open Pavillion at the Douglas County Fairgrounds, 2110 Harper St., Lawrence, KS. Due to early sell outs in the previous years, the Master Gardeners are doubling their inventory and adding shrubs. See details at <https://dgemgks.org/native-plant-sale-may-31/>

When adding to the available forage for your honey bees, consider adding one or more nutritious pollen sources, especially if your area is lacking sources. If you are unable to add to your nectar and pollen trees or plants this spring, take comfort in the knowledge that fall is also an excellent time to plant.

**Jo Patrick, Honey Plants Chairman**



# Northeastern Kansas Beekeepers' Bee Funday Registration Form

2025 Bee FunDay, Saturday June 7th, 2025

You can register and pay online at [www.nekba.org](http://www.nekba.org).

Your contact information will be provided to the club via PayPal or Square.

Name \_\_\_\_\_

Address \_\_\_\_\_

City, State, Zip \_\_\_\_\_

Phone # \_\_\_\_\_

Email address \_\_\_\_\_ @ \_\_\_\_\_

## Registration for the Bee Funday:

Adults \$65 per person \$65.00 \_\_\_\_\_

For **non-members** of The Northeastern KS Beekeepers Assn: \$75.00 \_\_\_\_\_

(Fee includes FunDay registration & one-year membership. Additional attendees only need to pay the \$65 per person rate)

Please join us for a catered BBQ Dinner after the FunDay per person \$20.00 \_\_\_\_\_

*FunDay Registration includes admission to the Funday, Morning snack of Wheatfield's breads, honey butter and a selection of creamed honey, lunch, drinks and homemade honey ice cream. There will be an alternative meal available at lunch and dinner for vegetarians. Please let us know how many? \_\_\_\_\_*

Youth (6-18years of age) \$15.00 \_\_\_\_\_

Youth Scholarship and Military/Veterans Apprenticeship Program Donation \_\_\_\_\_

Total \$ \_\_\_\_\_

Please make your check out to "Northeast KS Beekeepers or NEKBA" or register by paying online at [www.nekba.org](http://www.nekba.org) Send check payments by mail to : NEKBA, Robert Burns, 7601 W 54th Ter., Shawnee Mission KS 66202 Email: [rburnshoney@gmail.com](mailto:rburnshoney@gmail.com)

For further information, go to <https://www.nekba.org/bee-funday.html>

Names of those attending for name tags: \_\_\_\_\_

We appreciate early pre-registrations so much that at the end of the Bee FunDay we will hold a drawing of all pre-registered attendees and one person gets his/her registration fee back!

**Need More Info? Please contact Joli Winer at (913) 593-3562 or**

**[heartlandhoneyks@gmail.com](mailto:heartlandhoneyks@gmail.com)**

**Receipts are sent to those registrations made via PayPal or Square.**

# 2025 Bee FunDay SPECIAL EVENTS

The NEKBA Funday is approaching quickly. Mark your calendars for Saturday, June 7<sup>th</sup> in Lawrence KS. We have added some exciting new events to the day. Please check them out as they involve prior actions on your part.

- **Deep Dive Queen Rearing, a Masterclass-** This 3-hour queen rearing class will be taught by the queen rearing experts, Jim Kellie, John Speckman and Matt Winstead! This workshop will be 3 hours long and you must commit to being there the whole time. It is limited to 25 pre-registered guests. There is not an additional fee, but you will need to pay the Funday registration fee, by June 1<sup>st</sup>. Of course, you will also be able to attend the rest of the Funday. I suspect that this will fill up quickly. We will also have a waiting list, **anyone not registered for the Funday by June 1<sup>st</sup> will be removed from the class and someone from the wait list will be allowed to fill that spot.** To register, call or text Joli at 913-593-3562 or email at [heartlandhoneyKS@gmail.com](mailto:heartlandhoneyKS@gmail.com). Include your email address and phone number.
- **Honey Bee Photography Contest:** This fun event is a new addition this year! All photos must be 8 ½ X 10 inches and matted. Prizes will be awarded for 1<sup>st</sup>, 2<sup>nd</sup> and 3<sup>rd</sup> Place. Contest will be judged by Eugene Makovec, editor of the American Bee Journal. Photos must be turned in by 8:30 am and participants must be registered attendees at the Funday.  
**Photos may be Black and White or Color**  
**Photos must be of Honey bees or any aspect of beekeeping**  
**Two age categories:**  
**Youth: 17 and under**  
**Adult: 18 and over**
- **Hive or Super Painting/Decorating Contest:** This year we won't have a theme so use your creativity; anything goes. Prizes will be awarded for 1<sup>st</sup>, 2<sup>nd</sup> and 3<sup>rd</sup> place. Bring in your decorated hive body or super! Entries must be turned in by 8:30 to be included in the contest and participants must be registered attendees at the Funday.  
**Two age categories:**  
**Youth: 17 and under**  
**Adult: 18 and over**

## Funday Expo Silent Auction

### *We need your donations*

One of the well-received activities at the Funday Expo is the Silent Auction. Funday is June 7, 2025. Your donations are what makes the Silent Auction possible. Perhaps you have stumbled across a piece of beekeeping equipment no longer needed, have a beginning beekeeping book you would like to share, or possess a creative touch when creating honey bee related décor. We welcome your items to add to the auction. Please bring your item with you to Funday or contact Jo Patrick at (913) 645-8947 if you need to make donation arrangements. Proceeds go to youth, military veteran, and first responder scholarship programs.

# NORTHEASTERN KS BEEKEEPERS' ASSOC. 2025 MEMBERSHIP APPLICATION

NAME \_\_\_\_\_  
ADDRESS \_\_\_\_\_  
CITY \_\_\_\_\_ STATE \_\_\_\_\_ ZIP+4 \_\_\_\_\_  
PHONE \_\_\_\_\_ Email Address \_\_\_\_\_

I would like to receive the newsletter, *The Buzzer*, by email Yes \_\_\_\_\_ No \_\_\_\_\_

Membership Northeastern KS Beekeepers per year (July-Dec. \$12.50)	\$25.00	_____
Additional family members wanting voting rights \$1.00 per person	\$1.00	_____
Additional family member's name _____ (Youth Membership (18 years of age or under)	\$12.50	_____
Membership for Kansas Honey Producers Association	\$25.00	_____
American Bee Journal ( <u>discounted rate through association</u> )	1 year \$29.75	_____
Bee Culture Magazine (or subscribe online at <a href="http://www.BeeCulture.com">www.BeeCulture.com</a> )	1 year \$34.00	_____
Scholarship / Military/Veteran's Appr. Donation		_____
	<b>Total</b>	_____

**Make checks payable to: NEKBA or Northeastern Kansas Beekeepers Assn.**

Mail to: Robert Burns, 7601 W 54<sup>th</sup> Terr., Shawnee Mission, KS 66202 ph. 913-481-3504, [rburnshoney@gmail.com](mailto:rburnshoney@gmail.com)

**You may join, re-new, register, donate and pay online at [www.nekba.org](http://www.nekba.org)**

---

## MARKET PLACE

### MENTORING-SWEET PRAIRIE HONEY

Need help with your hives? -Spring inspections, installing packages, making splits, queen evaluation, diagnosis of pests and diseases, mite monitoring and treatment, etc. I can help you with your beekeeping needs! I am a certified master beekeeper with 30+ years of beekeeping experience. I will leave you with a written course of action after our session at your hives. Call or text 913-768-4961 or email Kristi Sanderson at [sandersonk09@gmail.com](mailto:sandersonk09@gmail.com) for pricing and appointment times.

---

### BEEKEEPERS.COM

[Beekeepers.com](http://Beekeepers.com) (Jordy's Honey Company) in Lenexa, KS. Beekeepers.com is your only local full-service beekeeping store. We carry a full line of Beekeeping Supplies, Protective Clothing, Bottles, Bee Packages, Nucs and Queens. Visit our website [Beekeepers.com](http://Beekeepers.com), to view our entire line of beekeeping supplies. You can also shop in-person at our store in Lenexa. We ship queens directly to YOU! Order at [QueenBees.com](http://QueenBees.com). Queens available March - October. Our hours are Monday-Friday 9:00-4:00, Saturday 9:00-12:00. You can find our honey at The Overland Park Farmers Market. **Robert Hughes**, 14054 W 107<sup>th</sup> St, Lenexa, KS 66215, 913-681-5777 or [email Info@Beekeepers.com](mailto:email Info@Beekeepers.com)

---

### COTTIN'S HARDWARE & RENTAL

Cottin's stocks a full line of beekeeping equipment year-round including items manufactured by Harvest Lane Honey, Little Giant, and Bug Baffler. Products include hives, supers, frames, foundations, extractors, tools, and protective apparel. We also stock a full line of Home Brewing Mead Making supplies. Located in Lawrence, KS at 1832 Massachusetts Street (South of Dillon's). We are open Monday - Friday 7:30 am - 6:00 pm, Saturday 8:00 am - 5:00 pm, and Sunday 10:00 am - 5:00 pm. You can follow us on Facebook, Instagram and Twitter. Call us at 785-843-2981 or email us at [hardware@sunflower.com](mailto:hardware@sunflower.com).



---

## CB'S HONEY

CB's Honey offers pure raw Kansas honey available in 5 gal buckets. Grafted queens and queen cells, and a limited number of nucs/packages. [CB's Honey | Facebook](#). Located just SE of Topeka. 4521 SE 61<sup>st</sup> Street, Berryton, KS 66409. Call or text Cheryl Burkhead at 785-224-9077 or [cherylbhoney@gmail.com](mailto:cherylbhoney@gmail.com)

---

## CEDAR RIDGE BEES

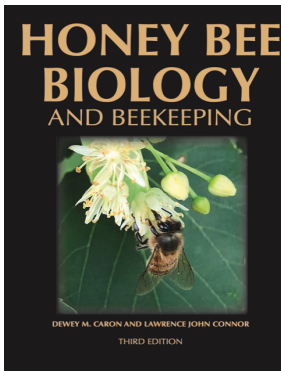
5 Frame Nucs for Sale. We are your local Premier Bee Products Dealer specializing in plastic foundation made entirely in the U.S.A. We sell bucket feeders and other bee equipment. Call or text Philip Knaus at 785-581-4216 or contact us at [cedarridgebeehives@gmail.com](mailto:cedarridgebeehives@gmail.com) - Check out our bees and products at [www.cedarridgebees.com](http://www.cedarridgebees.com) Cedar Ridge Bees 585 N 500 Rd, Overbrook, KS 66524.

---

## T CREEK BEES AND HONEY – Tecumseh/Berryton, KS

Tecumseh Creek winds its way through the home yard lending its name to the brand. Located between Lawrence and Topeka, T Creek offers 5-frame nucs, online honey sales, custom honey packing, wholesale delivery to the Topeka / Lawrence area, 5-gallon buckets of honey, and drop-shipping wholesale service to rural grocery stores and agritourism destinations. Visit [www.tcreekbees.com](http://www.tcreekbees.com) Email: [tcreekbees@gmail.com](mailto:tcreekbees@gmail.com) or find the bees on Facebook. Order 2025 5-frame nucs by visiting the website and completing the nuc order form. Owner: Tim Urich. LLC in the State of Kansas and licensed by Kansas Dept of Ag.

---



**Honey Bee Biology and Beekeeping, Third Edition, Dewey M. Caron and Lawrence John Connor,**

**\$90 postage included.** *This book should stay on the dashboard of every beekeeper's truck. It's that good, and that necessary. Kim Flottum, Bee Culture.*

This comprehensive textbook easily replaces many beginner books while adding comprehensive details of bee biology essential to becoming a successful beekeeper and student of the honey bee. First released in 1999, *Honey Bee Biology and Beekeeping* is widely accepted as a major textbook of Apiculture (beekeeping). Beekeepers and bee clubs use it to teach other beekeepers.

Universities use it to teach college students bee biology and beekeeping. It concentrates on the 'why', 'how' and 'when' of beekeeping. It explains bee and beekeeping basics in a manner meaningful to people who lack an extensive background in biology. Yet it is not over-simplified and provides a meaningful source of beekeeping information for the informed beekeeper. The Third Edition has been carefully edited, updated and expanded to 480 pages. New chapters have been added, as have colorful new graphics and photographs. The Glossary has also been expanded. **Wicwas Press LLC Kalamazoo, MI 49001 - [www.wicwas.com](http://www.wicwas.com)**

---

**The Association does not endorse nor evaluate the advertisements, products, or services offered in the Buzzer.**

Northeastern Kansas Beekeepers Association  
Robert Burns, Treasurer  
7601 W 54<sup>th</sup> Terr  
Shawnee Mission, KS 66202-1129

## Address Service Requested

### Meeting

**Monday, April 21<sup>st</sup>, 2025 - Douglas Fairgrounds**

### ***The Northeastern Kansas Beekeepers' Association***

Membership is open to anyone interested in bees or bee culture. Dues are \$25.00 per calendar year (December 31-December 31) for the first in the family joining. Those joining in July or later in the year may pay \$12.50 for ½ year. Additional members of a family wanting voting privileges shall be assessed dues at \$1.00 per year. Youth memberships (18 years of age and younger) are \$12.50 per year. Please submit new memberships and renewals to the treasurer or on-line at [www.nekba.org](http://www.nekba.org).

*The Bee Buzzer* is the official publication of the Northeastern Kansas Beekeepers' Association, Inc. and is published monthly. Commercial ads are accepted in the newsletter for a fee; non-commercial ads by paid members are accepted & are free.

The library of the association is free to all members. Books may be checked out at the meetings and kept for a period of 30 days. The bee publications, *The American Bee Journal* and *Bee Culture* can be subscribed to through the treasurer or on-line. The *American Bee Journal* is offered at a discount through the Association only.

The Association meets each month, generally on the third Monday at 7:00 p.m. except during the months of January and July. This is a non-profit organization; elected officers serve without pay. Everyone is invited to attend the meetings. Check *The Bee Buzzer* or website at [www.nekba.org](http://www.nekba.org) each month for the actual date, time, and location. If the weather is bad, call an officer or check the website to find out if the meeting will be held or cancelled.

#### **2025 Officers**

President: <b>Cheryl Burkhead</b> , 4521 SE 61st St., Berryton, KS 66409 <a href="mailto:cbfritz@aol.com">cbfritz@aol.com</a>	785-224-9077
1st VP (Program Chair): <b>Matt Brandes</b> , 4741 Highway K 68, Wellsville, KS 66092 <a href="mailto:matthew@n523rv.com">matthew@n523rv.com</a>	913-706-3087
2nd VP (Librarian): <b>Michael Hewitt</b> , 9221 SE Berryton Rd, Berryton, KS 66409 <a href="mailto:garlicranch69@gmail.com">garlicranch69@gmail.com</a>	785-230-0827
3rd VP (Honey Plants): <b>Jo Patrick</b> , 611 E Sheridan St., Olathe, KS 66061 <a href="mailto:brian-patrick@sbcglobal.net">brian-patrick@sbcglobal.net</a>	913-645-8947
Secretary: <b>Elaine Ellenz</b> , 17650 W 113 <sup>th</sup> St., Olathe, KS 66061 <a href="mailto:elaineellenz@gmail.com">elaineellenz@gmail.com</a>	913-515-1607
Treasurer: <b>Robert Burns</b> , 7601 W 54 <sup>th</sup> Terr., Shawnee Mission, KS 66202 <a href="mailto:rburnshoney@gmail.com">rburnshoney@gmail.com</a>	913-481-3504
Youth Scholarship Chair: <b>Jon Chitwood</b> , 27196 W 223 <sup>rd</sup> St, Spring Hill, KS 66083 <a href="mailto:jwchitwood@gmail.com">jwchitwood@gmail.com</a>	913-738-4585
Military/Veteran Appr. Liaison: <b>Buck Bradley</b> , 11 E 900 Rd., Baldwin City, KS 66006 <a href="mailto:buckusmc00@hotmail.com">buckusmc00@hotmail.com</a>	785-248-1005
Editor: <b>Tim Marshall</b> , 4736 Halsey St., Shawnee, KS 66216 <a href="mailto:flyinmonk@yahoo.com">flyinmonk@yahoo.com</a>	816-392-6854
Special Events Coordinators: (Classes): <b>Kristi Sanderson</b> , 1252 E Frontier Ln., Olathe, KS 66062 <a href="mailto:sandersonk09@gmail.com">sandersonk09@gmail.com</a> 4961	913-768-
(Funday): <b>Joli Winer</b> , 19201 S Clare Rd, Spring Hill, KS 66083 <a href="mailto:heartlandhoneyks@gmail.com">heartlandhoneyks@gmail.com</a>	913-593-3851
Webmaster: <b>Robert Burns</b> , 7601 W 54 <sup>th</sup> Terr., Shawnee Mission, KS 66202 <a href="mailto:rburnshoney@gmail.com">rburnshoney@gmail.com</a>	913-481-3504

Visit on-line at [www.nekba.org](http://www.nekba.org). Save time. Join, re-new, or register.