

STANDARD ROW STARTER FERTILIZER KIT FOR CORN PLANTERS & DRILLS

If you're looking for a way to put up to 11 gallons of seed-safe starter fertilizer or up to 5 gallons of regular starter in the row, this system will really help. By applying the fertilizer through KEETON SEED FIRMERS or TOTALLY TUBULAR TUBES, you will not have the expense of conventional fertilizer attachments.



KIT INCLUDES:

1. Red Ball Monitors
2. Row Orifices
3. Sureflow 12V Diaphragm Pumps
(Squeeze Pump, Variable Rate Diaphragm Pump or Piston Pump can be substituted)
4. 1/4" Air Line Hose for Row
5. Clamps, Gauge, Valves & Filters
6. Screens & Quick Change Orifice Bodies
7. Push Lock Fittings

The following kits have all components to go from the pump to the seed firmers. Tanks and wiring are not supplied due to variations between different planter makes. Additional hose may be necessary due to the way your planter folds or the number of tanks you have.

STARTER KIT PRICES

***WITHOUT SEED FIRMERS**

PART #	ROWS	PRICE
SKDFK-4	4 Rows	\$ 485.00 SALE
SKDFK-6	6 Row	\$ 565.00 SALE
SKDFK-8	8 Row	\$ 680.00 SALE
SKDFK-12	12 Row	\$ 955.00 SALE
SKDFK-16	16 Row	\$ 1,300.00 SALE
SKDFK-24 (2- Pumps)	24 Row	\$ 1,800.00 SALE



Red Ball Monitor

STARTER KIT PRICES

***WITH SEED FIRMERS**

PART #	ROWS	PRICE
SKDFK-4F	4 Row	\$ 613.00 SALE
SKDFK-6-F	6 Row	\$ 772.00 SALE
SKDFK-8-F	8 Row	\$ 960.00 SALE
SKDFK-12-F	12 Row	\$ 1,359.00 SALE
SKDFK-16-F (2 Pumps)	16 Row	\$ 1,855.00 SALE
SKDFK-24-F (2 Pumps)	24 Row	\$ 2,550.00 SALE



By-Pass Assembly



Pump Unit

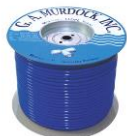
*OPTIONAL EQUIPMENT

PART #	ROWS	PRICE
SKDFKSK-Suction Kit	ALL	\$ 68.50 SALE
RH10-Run Hold Kit	ALL	\$ 55.00 SALE



HIGH PRESSURE POLYETHYLENE LINE 140 PSI.

1/4" x 250' BOX\$ 64.50
 1/4" X 500' ROLL.....\$ 89.00
 3/8" X 250' ROLL....\$ 68.50



5/16"X 250' BOX.....\$ 69.50
 3/8" X 100' ROLL.....\$ 30.00

Variable Pressure Row Starter Kit

- VARIABLE SPEED MOTOR
- DIAL ADJUSTABLE FEED RATE CONTROLLER
- AIR LINE PLUMBING TO ROWS
- A ROW CHECK BODY FOR EACH ROW WITH ORIFICE
- PRESSURE GAUGE, ELECTRICAL HARNESS, CHART
- REDBALL MONITORS, FITTINGS, AND MTG. BAR EXC. *



PART #	ROW #	KIT PRICE	KIT WITH FIRMERS	KIT WITH TOTALLY TUBULARS
SKVRFK-4	4	\$ 985.00 SALE	\$1118.00 SALE	\$ 1190.00 SALE
SKVRFK-6	6	\$1060.00 SALE	\$1260.00 SALE	\$ 1372.00 SALE
SKVRFK-8	8	\$1165.00 SALE	\$1430.00 SALE	\$ 1580.00 SALE
SKVRFK-12	12	\$1745.00 SALE	\$2150.00 SALE	\$ 2370.00 SALE
SKVRFK-16	16	\$2180.00 SALE	\$2715.00 SALE	\$ 3010.00 SALE
SKVRFK-24	24	\$2260.00 SALE	\$3070.00 SALE	\$ 3510.00 SALE
SKVR-P	PUMP	5.3GPM	1/2" FMPT	\$ 190.00 SALE
SKVR-C	1 PUMP	CONTROLLER	ONLY	\$ 255.00 SALE
SKVR-10	CABLE	EXTENSION	ONLY	\$ 46.50 SALE
SKVR-20	CABLE	EXTENSION	ONLY	\$ 64.50 SALE
SKVR-BAC	BATTERY	CABLE	ONLY	\$ 49.50 SALE
SKVR-CKIT	UPGRADE KIT FOR VARIABLE CONTROL	\$ 615.00 SALE	STARTING AT \$762.00 SALE	STARTING AT \$825.00 SALE
SKVRDFK-12	12 ROW *NO RED BALL	\$1155.00 SALE	\$1569.00 SALE	-----
SKVRDFK-24	12 ROW DRILL *NO RED BALL	\$1285.00 SALE	\$2113.00 SALE	-----

*PRICES SUBJECT TO CHANGE WITHOUT NOTICE!



Modular Monitor Kits With Mount & Hardware

Includes mounting cross bar, monitor columns, hose barb elbows, inlet tee and monitor clips.

*Used primarily in planter applications.

Part #	Description	Rows	Price
3000-RM1-4	4 Column Kit	4 Rows	\$ 119.00 SALE
3000-RM1-6	6 Column Kit	6 Rows	\$ 175.00 SALE
3000-RM2-8	8 Column Kit	8 Rows	\$ 196.00 SALE
3000-RM3-12	12 Column Kit	12 Rows	\$ 258.00 SALE
3000-RM4-16	16 Column Kit	16 Rows	\$ 349.00 SALE
3000-RM6-24	24 Column Kit	24 Rows	\$ 519.00 SALE
00418-12	MOUNTING BAR ONLY	0-12 ROWS	\$ 40.00 SALE



Squeeze Pump Style Monitors

Part #	Description	Price
3376-0003	1/4" HB 4 Column Squeeze	\$ 69.50 SALE
3376-0004	3/8" 90° HB 4 Column Squeeze	\$ 69.50 SALE
3376-0005	1/2" 90° HB 4 Column Squeeze	\$ 69.50 SALE
3376-0006	3/8" 90° HB 2 Column Squeeze	\$ 47.50 SALE
3376-0007	1/2" 90° HB 2 Column Squeeze	\$ 47.50 SALE



3376-0004

3376-0006

CUSTOM KITS AVAILABLE UPON REQUEST!

JOHN BLUE “Blockage Monitor System”



PART #	DESCRIPTION	PRICE EA.
BMI-08	IPAD READY SYSTEM (8 ROW)- LESS IPAD	\$ 1,350.00 SALE
BM-08PL	STANDARD Wired (8 ROW)	\$ 1,350.00 SALE
BMPT-001	ADD ON 4 ROW EXP. KIT	\$ 449.00 SALE



Features of the CDS-John Blue Liquid Blockage Monitor System:

- Uses magnetic sensing technology mounted behind the VisaGage II Flow Monitors.
- Sensors can be mounted to existing VisaGage II units; new magnetic balls are supplied with sensors.
- Identifies where magnetic balls are floating in each row during liquid application.
- Only LBMS shows both low-flow and no-flow. Plus, the Premium Wireless and the NEW ISOBUS Systems also display high flow for broken lines.
- See a visual display and hear an audible alarm on the control panel right from your tractor cab.
- * Can be used with cloudy or dark liquids - LED is visible to the sides of the column.
- Each row with a distribution problem will be highlighted by a flashing LED light at the row. No need to remember or search for which row is blocked .
- The alarm will reset automatically when the blockage has been corrected.
- Have the ability to "Pause" the system to capture problem rows for investigation later when you are able to stop.
- Our patented LBMS is available in five user-friendly options: standard wired control panel; the wireless systems for iPad, Android, and Amazon Kindle.
- Wireless apps and ISOBUS sections can be defined and rows can be numbered.

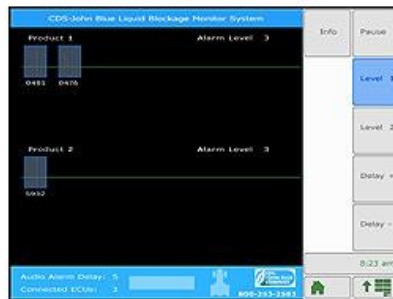
Standard (Wired)



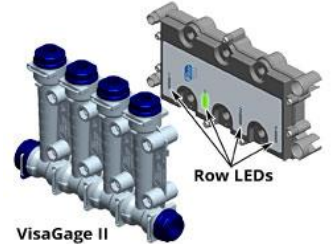
Premium (Wireless)



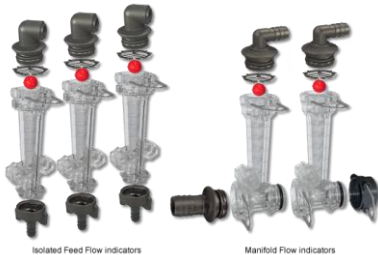
ISOBUS Compatible



Sensor Assembly



WILGER FLOW INDICATORS



PART #	# ROWS	TYPE	IN/OUT TYPE	PRICE EA.
20460 4 VO	4	MANIFOLD	1/2-1" / 1/4- 3/4"	\$ 99.00 SALE
20460 6 VO	6	MANIFOLD	1/2-1" / 1/4- 3/4"	\$ 155.00 SALE
20460 8 VO	8	MANIFOLD	1/2-1" / 1/4- 3/4"	\$ 210.00 SALE
20480 1VO	1	ISOLATED	1/4, 3/8", 1/2"	\$ 24.00 SALE
20480 4VO	4	ISOLATED	1/4, 3/8", 1/2"	\$ 95.00 SALE
20480 6VO	6	ISOLATED	1/4, 3/8", 1/2"	\$ 145.00 SALE

***PLEASE SPECIFY INLET AND OUTLET SIZE WHEN ORDERING!
*DOES NOT INCLUDE MOUNTING BAR!**

Seeing Is Knowing

A glance is all it takes to know if the correct amount of liquid is flowing to your spray nozzles or planter openers.

When the liquid is flowing equally the balls hover at the same level:

If a ball drops (relatively to the others), the flow is blocked or restricted.

If the ball is rising higher (relatively to the others), the flow is too high, due to a leaking outlet or hose.





IN FURROW STAINLESS STEEL TUBES



Stainless Steel Starter Fertilizer Application Tubes That Tuck Down In-Between The Seed Openers Of Most Planters. We Stock Several Different **Totally Tubular** Fertilizer Tubes:



PART #	PLANTER MODEL	PRICE
TT-001	Jd 7000 – Kinze 2000 W/ Tube Guard	\$ 51.50 SALE
TT-002	JD 7200-1700 Includes Tube Guard	\$ 51.50 SALE
TT-006	1700 XP WITH DRIVE ON GUARD	\$ 51.50 SALE
TT-007	JD MAX EMERGE 5 SERIES	\$ 51.50 SALE
TT-009	JD EXACT EMERGE	\$ 50.00 SALE
TT-100	CASE IH 900-1200	\$ 24.50 SALE
TT-10012	CASE IH 1200 (2012+)	\$ 27.00 SALE
TT-200	White 8000, Includes Seed Tube Guide	\$ 54.00 SALE
TT-260	WHITE 6000, INCLUDES TUBE GUARD	\$ 54.00 SALE
TT-290	WHITE 9000	\$ 54.00 SALE
TT-301	Kinze 3000	\$ 39.95 SALE
TT-300	REAR MOUNT BRACKET WITH TUBES	\$ 37.50 SALE
TT-300 CASE	CASE IH 1200 REAR MOUNT	\$ 31.50 SALE
TT-401	KINZE 4900 SERIES	\$ 51.50 SALE



REAR MOUNT FERTILIZER TUBE



MADE LOCALLY IN
NEW CARLISLE!



- Made of 3/8" Proof Coil Stainless Steel Tube
- Bent to resist debris build up on tube when planting thru a Cover Crop.
- Will accept 1/4" line thru the tube all the way to the bottom.
- Supplied with S.S. Hardware
- Can be used along side a Drag Chain.
- Will handle volumes up to 40 GPA.
- Made In USA
- Patent Pending
- Available In Right And Left Hand Delivery



Part # RMTKR-1
Kinze 2500-4900
RH or LH
\$ 58.00 Ea. Sale

Part # RMTJR-1
JD 7000-17X5
White 6000+
RH or LH
\$ 48.00 Ea. Sale

Will starter fertilizer banded over the row behind the planter press wheel be effective?
-The N portion of a starter fertilizer usually is effective if banded over the press wheel. This element is very mobile in soil. It can easily move from the band downward into the soil profile, thereby contacting the growing roots of the new seedlings.
-OSU Extension *Bulletin 760* (Jay W. Johnson)



Part # RMDTDC-1 DOUBLE TUBE WITH DRAG CHAIN
FITS: JD 7000-17XX
KZ 2000-2300
WHITE 6000+
-STAINLESS BRACKETS
\$ 135 PER ROW SALE

