

# Bell Tower Memorial, Inc.



*A case for  
Support*

*Help us honor, educate, Remember*

## Our Mission

The Bell Tower Memorial will create a place to honor and remember loved ones as well as those who sacrificed for our freedom. The Tower's Memory Gardens will be a place for quiet reflection on the blessings we enjoy as Americans as a result of those who paved the way. The walkway will be made up of bricks from donors inscribed to honor and thank those who made a difference in our lives and whose names are forever etched in recognition. This is a place to honor veterans, remember loved ones, and acknowledge other special people, companies and organizations.

Educational programs and activities will inspire learners of all ages, and enhance the community with a gathering place for traditional occasions, memorial celebrations and community events. There will be a variety of programs in collaboration with local organizations and others.

The City of Pewaukee location, on the southeast corner of Busse Road and Hwy. 164 is a perfect location for bringing people together and enhancing the quality of life in our area.

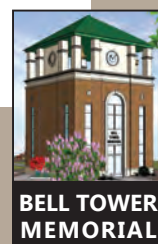
## Other Features

The Memory Garden will contain beautiful plantings and a walkway paved with inscribed bricks. People from around the Midwest and beyond will come to enjoy this unique combination of tribute and the impressive sounds of carillon bell ringing.

The Bell Tower Memorial will promote economic development by attracting people to Pewaukee and the surrounding area. The carillon will offer an unforgettable experience, making the Bell Tower Memorial a desirable and attractive landmark destination.

Upon review of the information, please feel free to contact us regarding any questions you may have. Thank you for taking the time to learn about the Bell Tower Memorial and its mission.

**Bell Tower Memorial, Inc.**  
**PO Box 681 Pewaukee, WI 53072**  
**(262) 523-0100 | [www.belltowermemorial.org](http://www.belltowermemorial.org)**



## **Encourage our community to honor Wisconsin's veterans and all who have made a difference in our lives**

### **A place for education and celebration**

In the City of Pewaukee, on the SE corner of Busse Rd. and Hwy. 164, just north of I-94, this memorial will become an awe-inspiring, one-of-a-kind landmark. It will be a place where we can educate our youth, remember our predecessors and bring history to life for generations to come.

### **A unique combination of tribute and performance**

The insignias of the armed services will be engraved in granite for all to enjoy; a vital tribute to those who made the ultimate gift to our country. The memory garden, walkways and courtyard will be paved with memorial bricks inscribed with the names of a veteran, a loved one, a company, or an organization.

### **Inspiring through education**

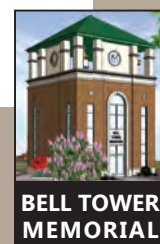
The Bell Tower Memorial will serve as a valuable storehouse of information about our state. Students of all ages, especially those in area elementary, middle and high schools can learn to understand and honor the ideal of serving one's community and country. It's a perfect opportunity to help the generations connect, as children come to understand what their parents, grandparents, family, and friends experienced. Schools, civic organizations, local businesses, veterans' organizations, and companies around the state can learn through the telling of their history and stories.

### **Connecting the community**

The community at large gains a place to remember and reflect. With space for ceremonies on traditional occasions such as Memorial Day, Flag Day, Veterans Day, Independence Day, and many others, the memorial encourages us all to not only revisit our past but also contemplate our future. The bells symbolically call the community together for common purpose.

### **Ongoing programs will include:**

- Formal programs on traditional and special occasions. This may include band music, concerts, historical presentations, handbell recitals, and student artwork in conjunction with the occasion
- Opportunities for local organizations to hold special events
- Patriotic celebrations



### Enhancing quality of life

This project adds to the quality of life in Pewaukee and Wisconsin, enhancing our reputation with a landmark that is inspiring and unique. The memorial will attract visitors seeking to:

- Honor a veteran or loved one
- Acknowledge a company or organization
- Experience the magnificent sound and appeal of the Carillon bell ringing
- Enjoy special events and programs

In bringing people to the Pewaukee community, the Bell Tower Memorial promotes economic development in and around southeastern Wisconsin, especially in Pewaukee and Waukesha County.

### Make a difference with your support

Your support will help us complete construction and finance ongoing operations for the Bell Tower Memorial - preserving valuable memories and bringing history to life for future generations to come. See pages 5 - 7 for opportunities to sponsor key site features.

Make sure people who've earned a place in our history and in our hearts are honored for generations to come. Help us **Honor, Educate and Remember**. Add your support to the Bell Tower Memorial today.



## Committees

### Administration/Operations

Functions included are documentation, governance, evaluation, operations management, policy & procedure development, recruiting, and volunteer coordination.

### Finance

Accountability for budgeting, financial reporting and inventory tracking.

### Marketing/Fundraising/Member Development

Responsible for media relations, public relations, publicity, advertising, outreach, website development and maintenance, demographics, and promotion to targeted audiences. Plans and conducts campaigns, establishes procedures and ongoing solicitations of volunteers and/or members, periodic follow up, acknowledgements (thank yous), and recommendations for member benefits.

### Leadership

Provide oversight of other committees and serve to collaborate and coordinate the various Board members and their respective functions; also, outreach to all stakeholders and collaborative efforts with selective partners. Development and periodic review of the business plan, including facility, financial, marketing, operations, and strategic plans.

### Programming/Education & Event Planning & Management

Review and determine demand for specific educational and other programs, and find resources for developing, scheduling and presenting content via wall-mounted screens/monitors, and presentations in the tower, or on the grounds. Plans, develops, coordinates, and manages celebratory, commemorative or educational events whether produced internally or externally.

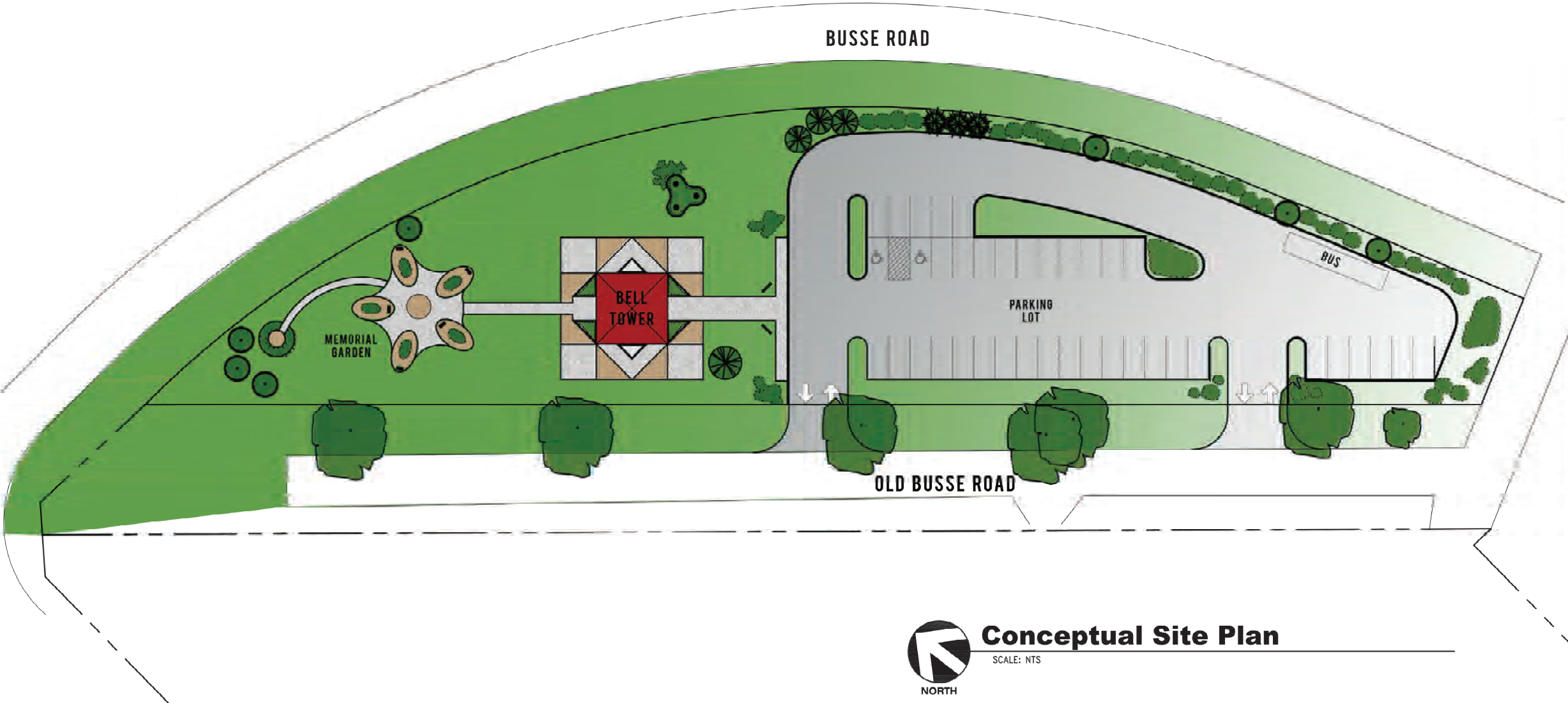
### Construction/Design/Facilities Committee/Maintenance

Oversee and coordinate overall design of bell tower, including the integration of the bell system. Develop construction cost estimate, coordinate bidding and construction phases. Develop a maintenance program and budget for both the bell tower and the memorial grounds.

Other committees may be formed from time to time for specific long or short-term purposes, and reformed, or re-purposed as the need arises and is recognized by the Board of Directors.



Bell Tower Memorial Site Plan



Conceptual Site Plan

SCALE: NTS



ELM GROVE, WISCONSIN 53122  
PHONE: (262) 641-0729  
FAX: (262) 641-0584

**BELL TOWER MEMORIAL**  
PEWAUKEE, WISCONSIN

No.	Revision	Date	By

Sheet Title:  
**LANDSCAPE PLAN**

Project Number:  
**05139-B**

Date:  
**JULY 28, 2014**

Drawn by:  
**JTS**

Checked by:  
**SKP**

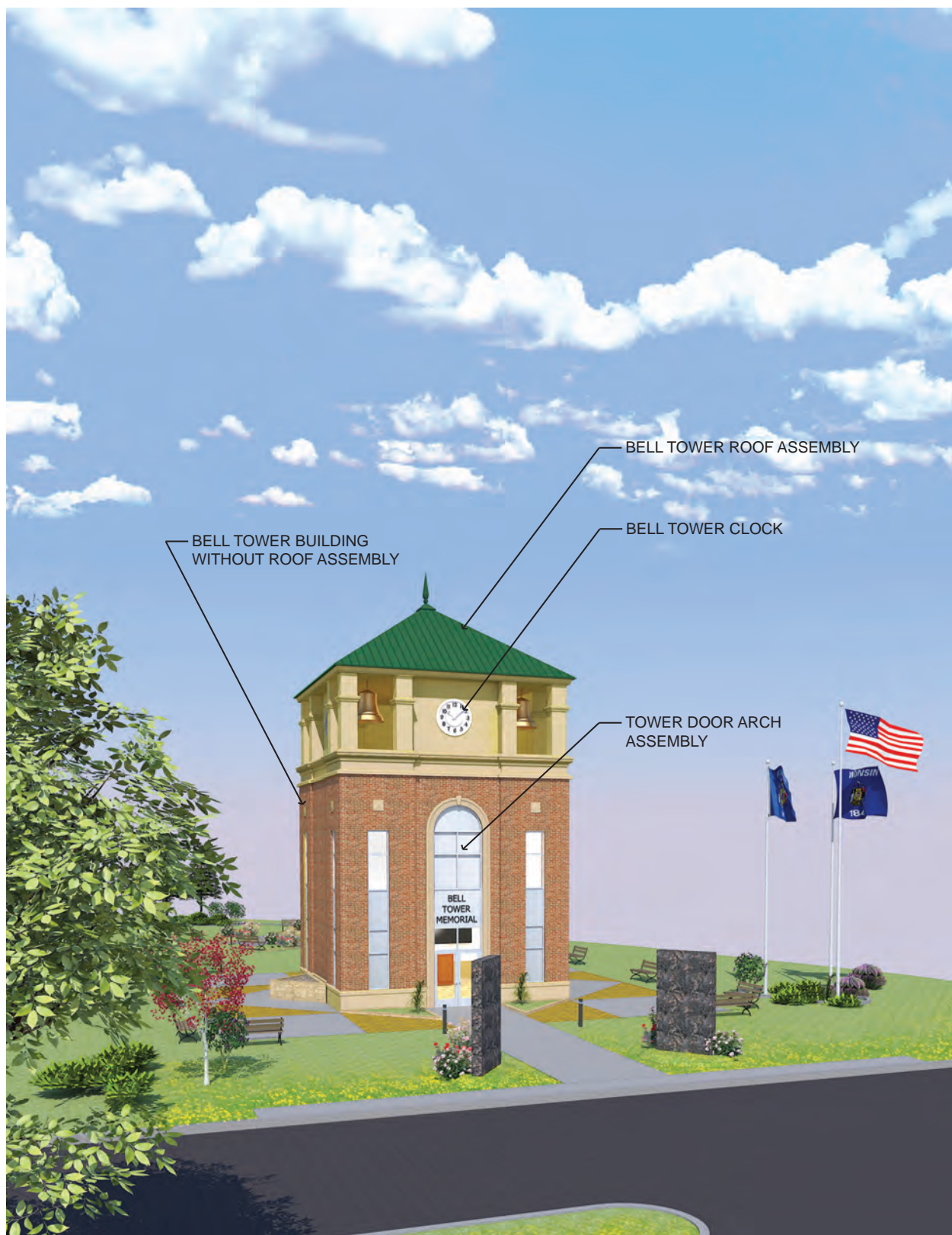
Sheet Number:  
**L1.0**

GET INVOLVED

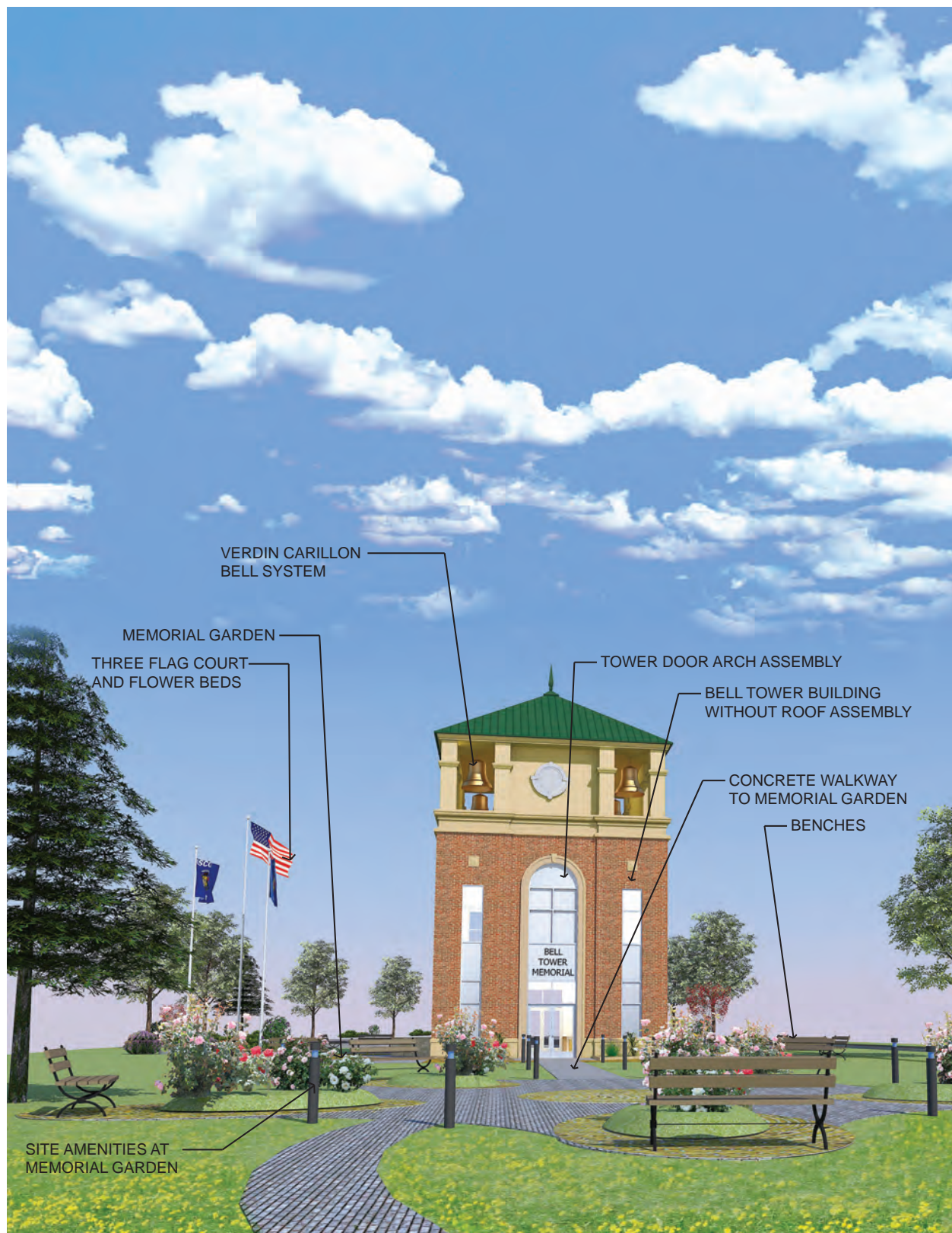
Help us honor, educate, *Remember*



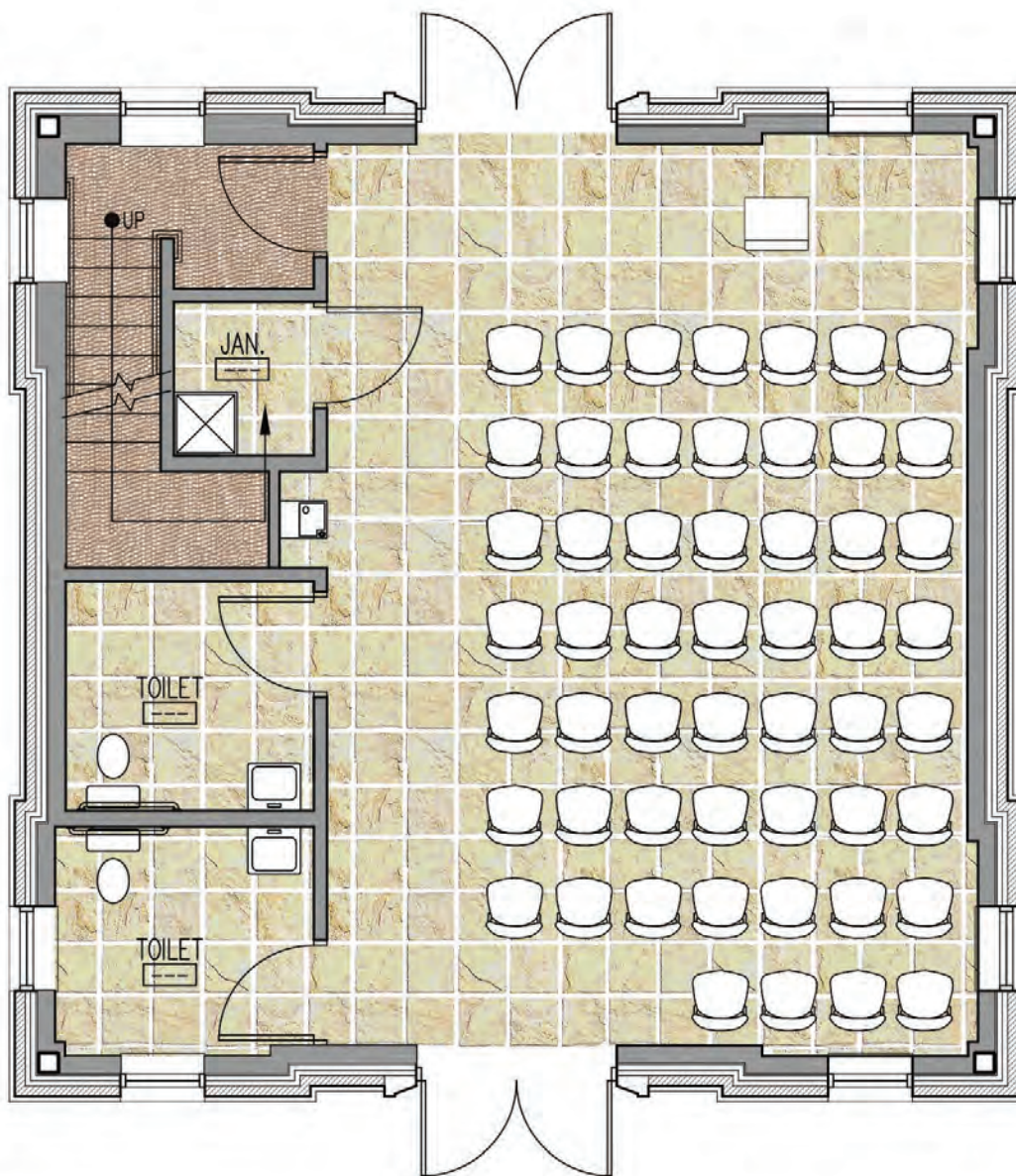
BELL TOWER MEMORIAL



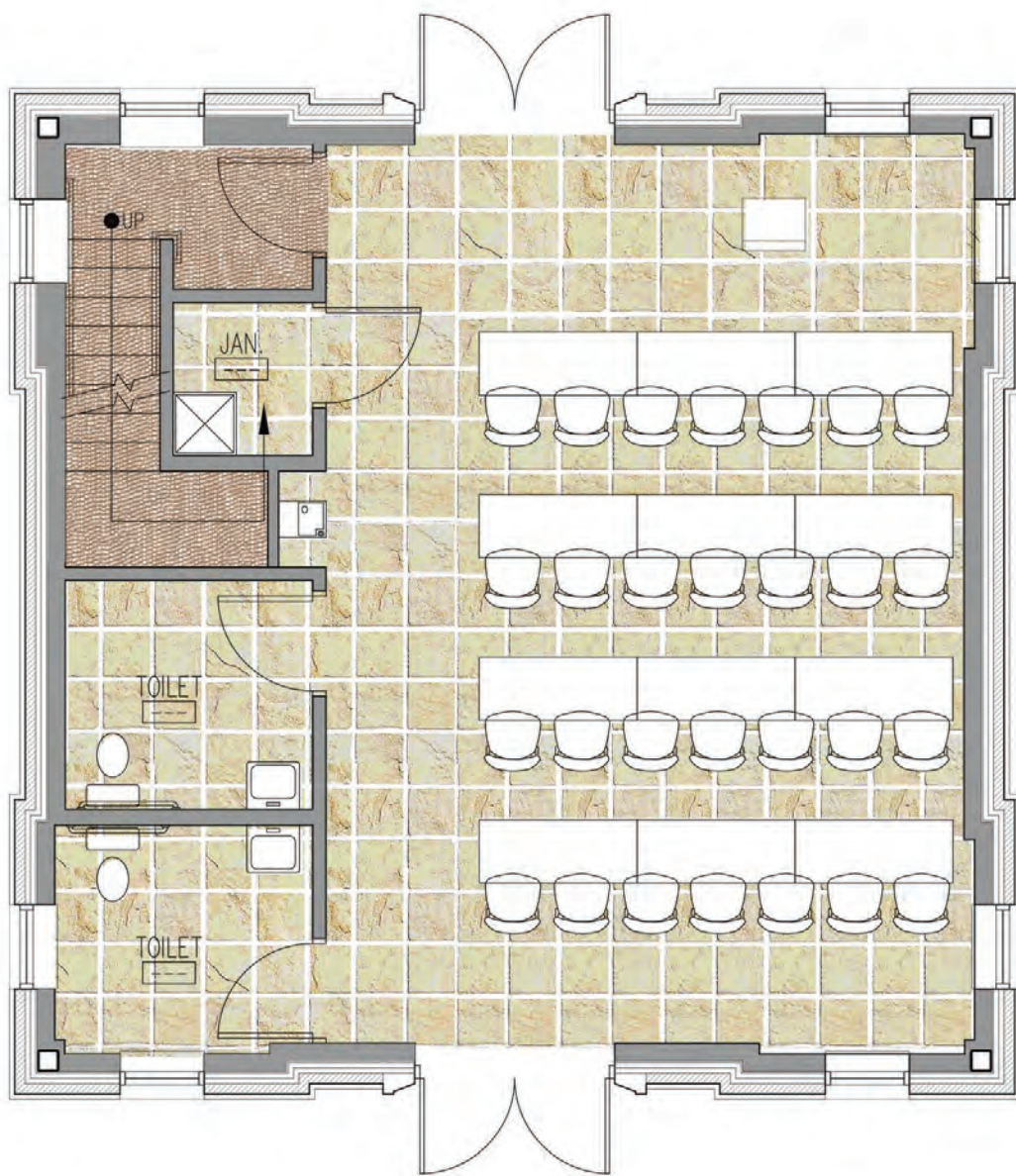








MAIN LEVEL PLAN



MAIN LEVEL PLAN

## Why give now?

The land has been acquired from the City of Pewaukee and an agreement is signed with the Verdin company for a carillon bell system to be installed in the Bell Tower Memorial once built. Construction documents are moving forward, committees are being expanded, and a business plan is in place. Your support ensures this project will be fully realized, carrying out our heartfelt mission to **Honor, Educate and Remember**.

### Honor loved ones and those who have ensured your freedom

Give to the Bell Tower Memorial and you join in creating a place to honor Wisconsin veterans and those who have special meaning in your life. You will also be part of building a community asset where special loved ones, organizations, companies, community public service heroes, and others will be honored and remembered for their gifts and service to the community, the state and far beyond.

### Educate visitors

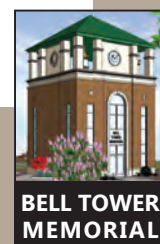
Through informational programs and memorabilia displays, students can discover the past and explore the meaning of service to our country. They can collaborate to present informational programs to the public with respect to civic and other classroom projects. Our local university students can play a very important role in the educational elements available through programs.

### Remember our past to shape our future

The stories of the national conflicts and the local history of Pewaukee need to be preserved and retold to keep our history alive. Sharing these memories and their impacts also strengthens connections across generations. The Bell Tower Memorial encourages all visitors to contemplate the past - and apply its lessons to the future.

### Make a difference - various ways to donate

Help complete construction and ensure ongoing programs for the Bell Tower Memorial. Choose your sponsorship opportunity now.



## Operating Budget

### ESTIMATED ANNUAL REVENUES:

---

Events	\$7,750
Fundraising	\$25,000
Memberships	\$3,000
Memorabilia	\$3,000
Sponsorships	\$30,000
	<hr/>
TOTAL:	\$68,750

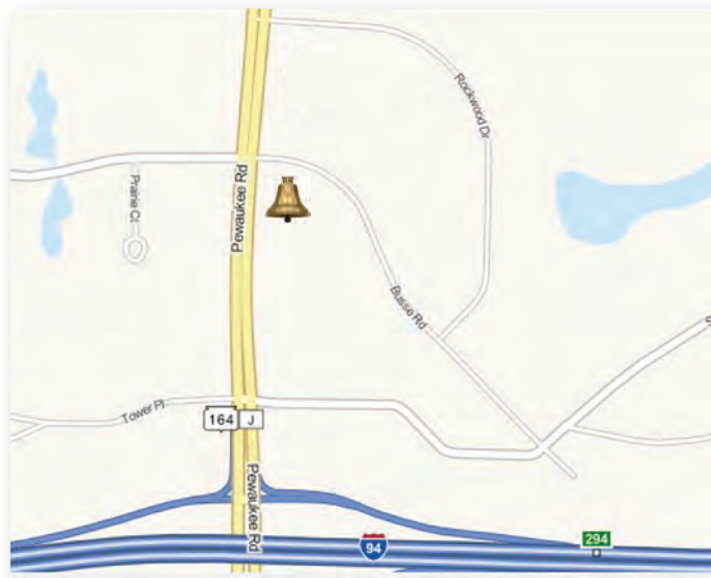
### ESTIMATED ANNUAL EXPENSES:

---

Curator/Group Coordinator	\$22,000
Display & Educational Materials	\$7,700
Facility & Grounds Maintenance	\$12,000
Insurance (BTM Inc., Board & property)	\$6,000
Inventory (supplies & memorabilia)	\$1,500
Marketing	\$12,000
Utilities	\$4,800
Web Site Maintenance	\$2,750
	<hr/>
TOTAL:	\$68,750



*Help us honor, educate, Remember*



*Located on the southeast corner of Busse Road and Hwy. 164 in Pewaukee*

---

**Bell Tower Memorial, Inc.**  
**PO Box 681 Pewaukee, WI 53072**  
**(262) 523-0100 | [www.belltowermemorial.org](http://www.belltowermemorial.org)**