

How to Organize Your Neighborhood

SSEPO
SOUTH SKYLINE
Emergency Preparedness
ORGANIZATION

© 2016 SSEPO



What is a Neighborhood?



A “neighborhood” is defined as groups of homes and residents that are in close proximity to each other or are characterized by other factors that lead to a formation of a “local group”.

There are different types of Neighborhoods.

Step 1: Neighborhood Leadership

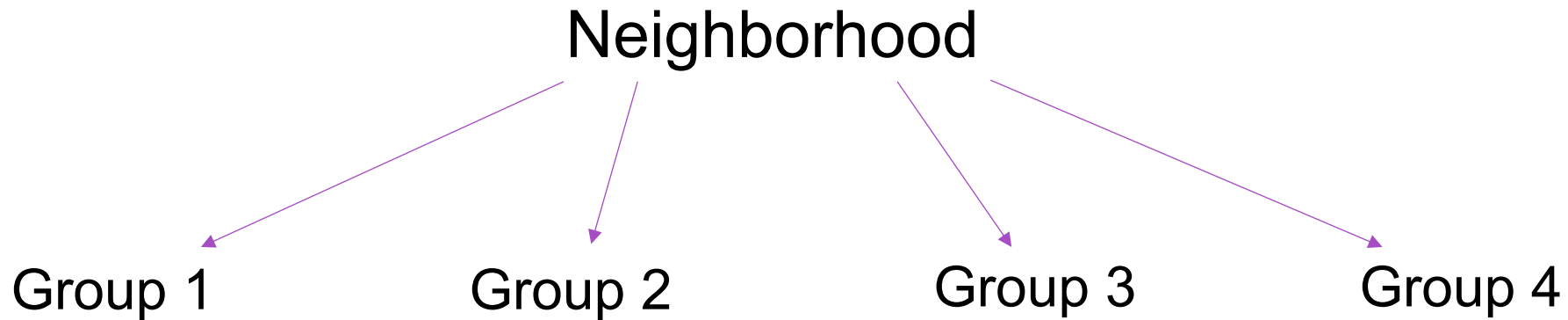
First and Most Important, You **MUST** Identify Your Neighborhood and a
LEADER



A NEIGHBORHOOD COORDINATOR

Step 2: Span of Control

Depending on the size of your community, adhere to Span of Control per the Incident Command Structure (ICS) --- no more than 6 – 8 residences per group or cluster. More than that and the span of control is too large to be effective.



Each Group or Cluster MUST have a Leader / Coordinator

Step 3: Community Meeting

Hold a neighborhood meeting or contact each neighbor to discuss:

Need for an Emergency Preparedness Plan – Why do we need to do this?

Educate neighbors on types of disasters and how to be prepared for each: Family Disaster Plan, Emergency Go Kits, Be Prepared to Stay or to Leave, Evacuation Routes, etc.

All the information you need can be found at www.SSEPO.org

Step 4: Develop a Neighborhood Emergency Communications Plan

That can reach EVERYONE in the NEIGHBORHOOD

No ONE method will work for everyone

People are scattered

Some are unwilling to participate

Some may have special needs

Must be simple enough for everyone to use

Develop a Neighborhood Emergency Communications Plan Emergency Alert Apps

Make sure everyone has information about essential Emergency Apps and Websites:

- SMC Alert, CruzAware, AlertSCC
- Genasys Protect - Know Your Zone
- Watch Duty
- Smoke Point
- CalFire Incidents
- La Honda Fire Brigade Website

Details in handout

Develop a Neighborhood Emergency Communications Plan Create a Neighborhood Directory

- Phone numbers / Text Messages?
- Address
- E-mail
- Pets / Farm Animals
- Gate Codes
- Special Needs
- Special Skills / Equipment: CERT, Ham Operator, Medical Personnel, AED, Tractors, Chain Saws, etc.
- Determine how the information is used; Be aware of privacy concerns
- Keep it Up-to-Date

Develop a Neighborhood Emergency Communications Plan Regional & Neighborhood Email

Internet Blast Through Email

Join Regional Email Groups: La Honda Google Group, South Skyline Groups.io, 95033
Groups.io, Next Door

- Road Closures

Create a Private Email Group for your specific Neighborhood

- Regular Sharing of Neighborhood Concerns
- Emergency Alerts and Updates

Develop a Neighborhood Emergency Communications Plan Cell Phone Text Messages

Create Group Text Messaging for Your Neighborhood
Can be difficult with multiple types of phones

WhatsApp

Bottom Line: Use What Works Best for Your Neighborhood. May Require Physically Going to Homes

Develop a Neighborhood Emergency Communications Plan Radios

1

Determine if MURS, FRS or GMRS Radios would be an effective method of communication in your neighborhood, when traditional communication methods fail.

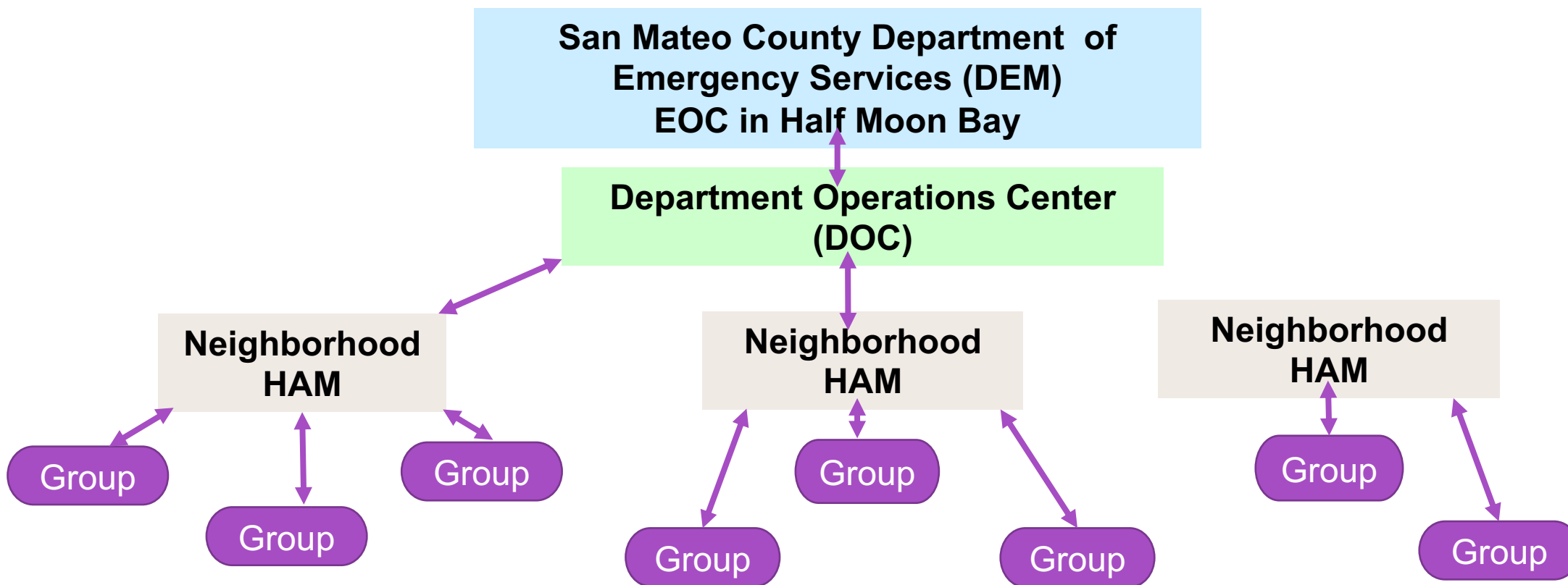
2

Conduct testing to determine which kind of MURS or GMRS radio would be most effective in your neighborhood.

3

Identify HAM Radio operators in your community who can coordinate outside communications for getting emergency information and for requesting help when necessary

Radio Communications Plan



GMRS Radios

STEP 5: Community Emergency Response Team (CERT)

FOR YOURSELF, YOUR FAMILY, YOUR NEIGHBORHOOD, YOUR COMMUNITY

**TRAINING IN:
EMERGENCY PREPAREDNESS
INCIDENT COMMAND
FIRE SUPPRESSION
MEDICAL FIRST AID AND STOP THE BLEED
LIGHT SEARCH & RESCUE
DISASTER PSYCHOLOGY
TERRORISM**



BE PREPARED

FOR ANY
KIND OF
DISASTER

HAVE YOUR
“GO BAG”
READY

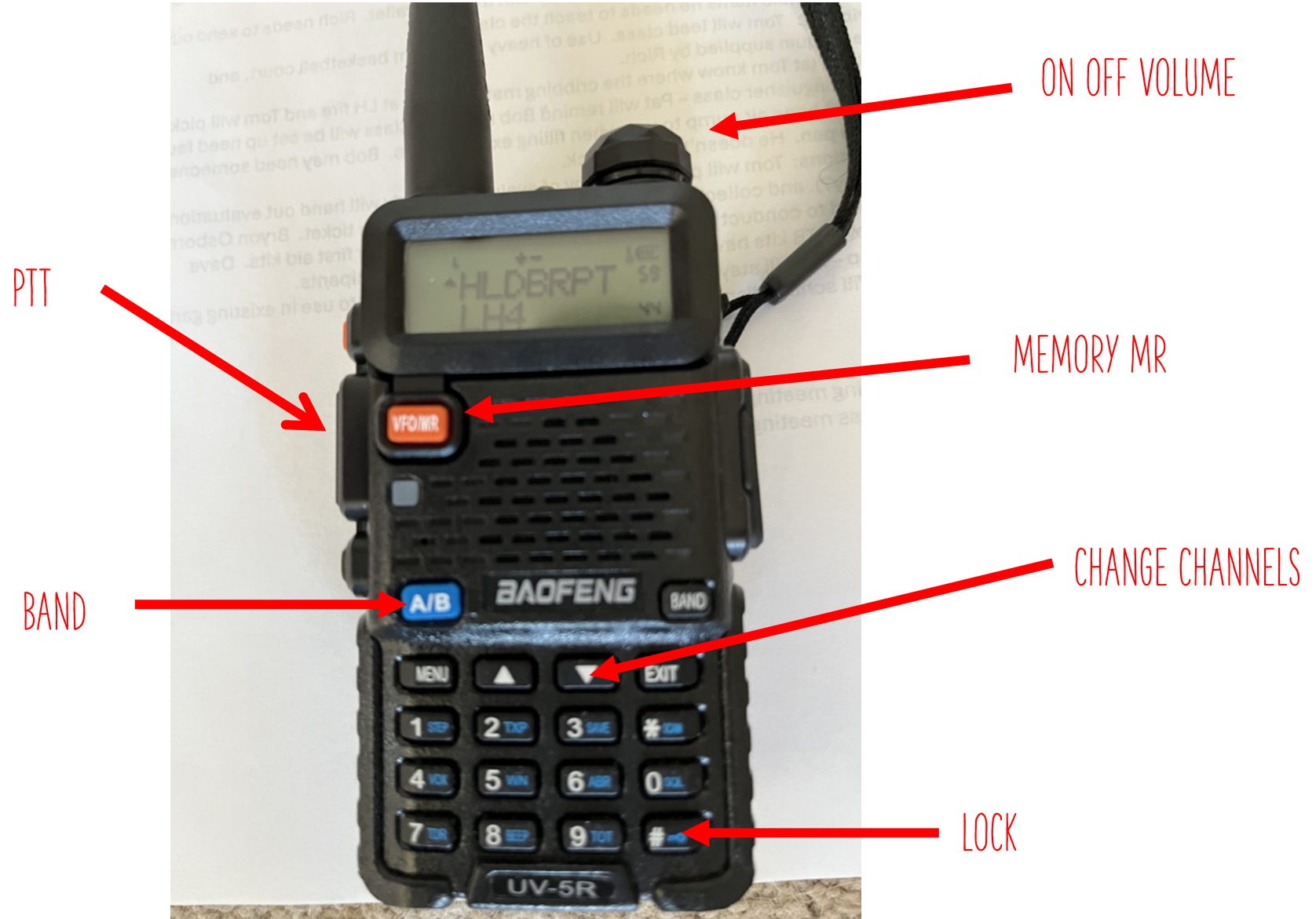
EVACUATION

SHELTER IN
PLACE

Step 6: Keep It Going

- Complete GIS Mapping of residences – identification of important information needed by Fire and First Responders.
- Conduct regular training and drills.
- Encourage neighbors to get CERT training
- Hold annual simulated emergency drills
- Regularly update the phone tree / contact list; include renters
- Consider becoming a **Firewise Community**

BAOFENG UV-5R GMRS DUAL
BAND RADIO



PTT

ON OFF VOLUME

MEMORY MR

CHANGE CHANNELS

BAND

LOCK



BASIC GMRS RADIO PROCEDURES

- **HOLD RADIO TO THE SIDE OF YOUR FACE**
- **TALK ACROSS THE MIC**
- **ANTENNA STRAIGHT UP**
- **PUSH TO TALK BUTTON -- HOLD 1 SEC BEFORE SPEAKING & 1 SECOND AFTER SPEAKING**
- **TALK IN NORMAL VOICE WITH CLEAR ARTICULATION**
- **END TRANSMISSION WITH “OVER”**