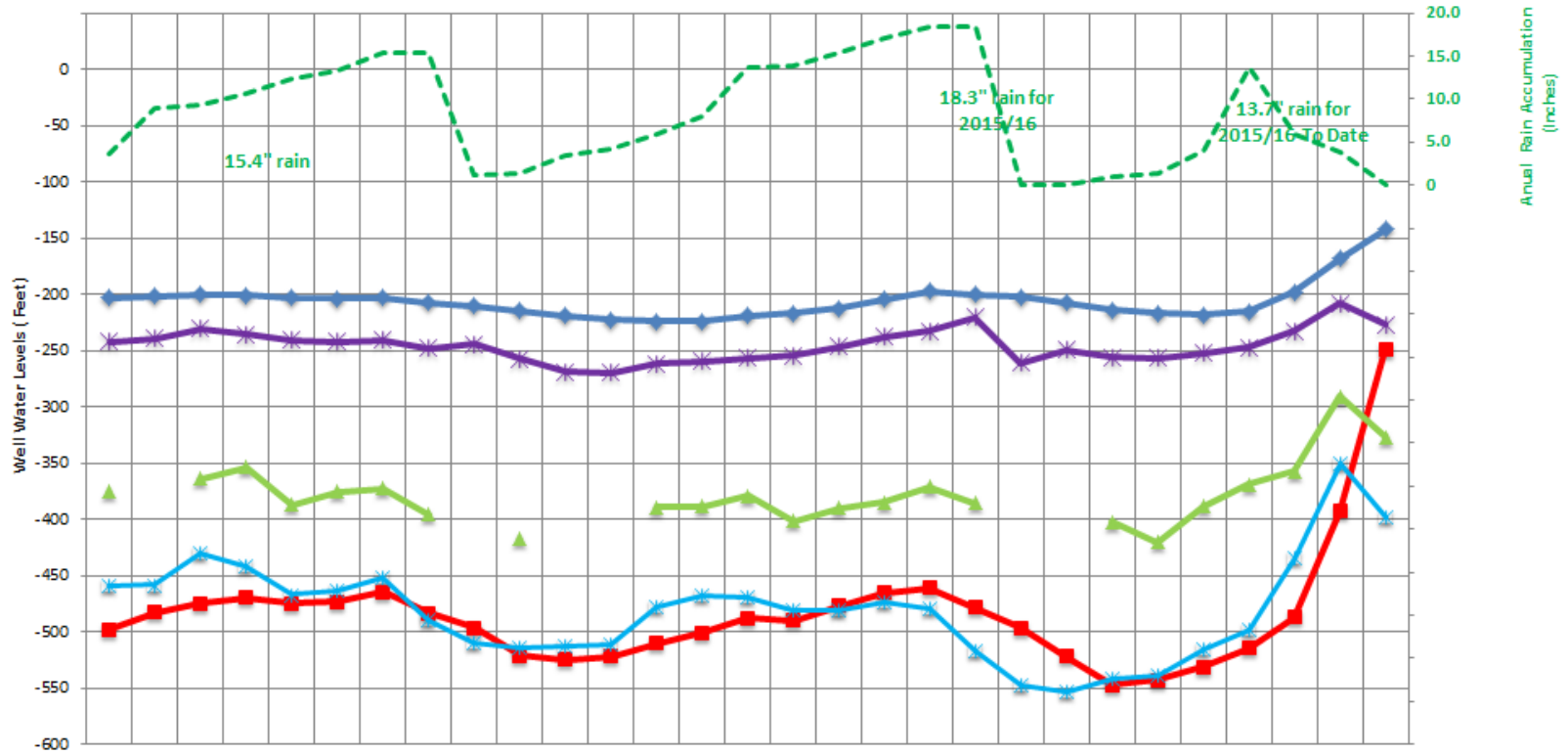


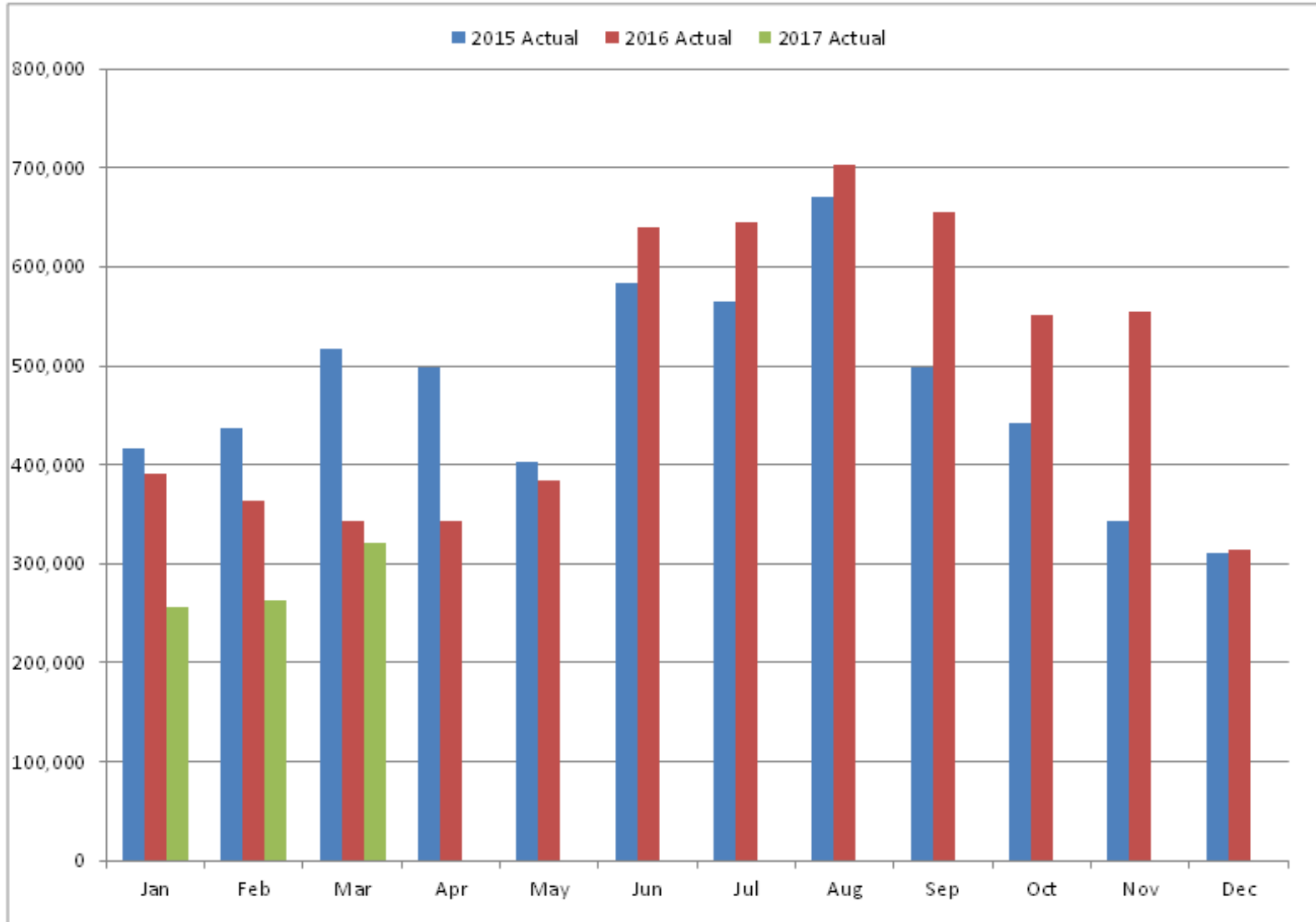
# WWD Q1/2017 Operations Report

## WWD Well Water Levels and Rain - 12/6/14 thru 4/1/17



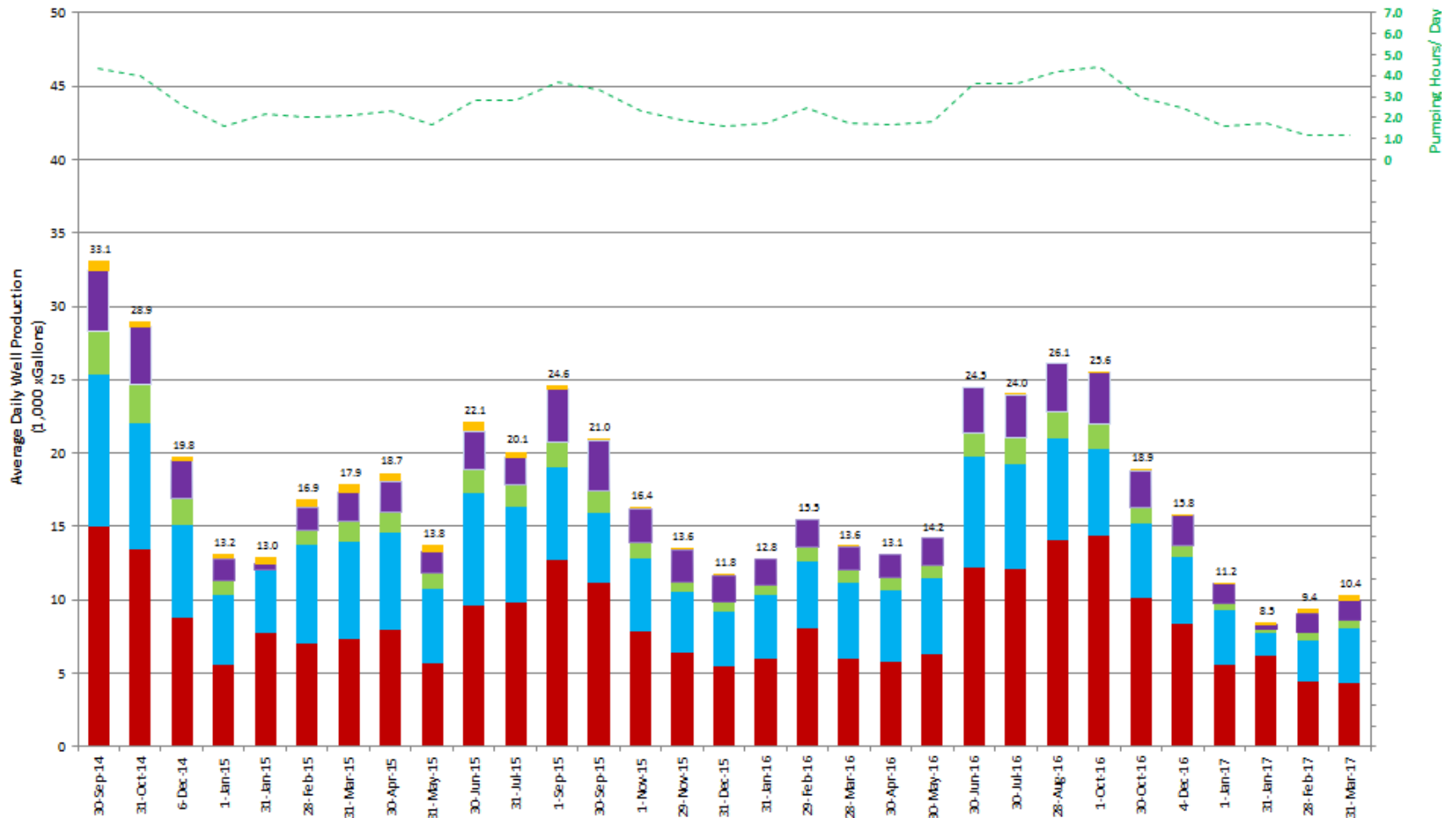
	06-Dec-14	01-Jan-15	31-Jan-15	28-Feb-15	31-Mar-15	30-Apr-15	31-May-15	30-Jun-15	31-Jul-15	01-Sep-15	30-Sep-15	01-Nov-15	29-Nov-15	31-Dec-15	31-Jan-16	29-Feb-16	28-Mar-16	30-Apr-16	30-May-16	30-Jun-16	30-Jul-16	28-Aug-16	01-Oct-16	30-Oct-16	04-Dec-16	01-Jan-17	31-Jan-17	28-Feb-17	31-Mar-17
Well-5	-203.	-201.	-200.	-200.	-202.	-203.	-203.	-207.	-210.	-214.	-218.	-222.	-223.	-224.	-219.	-216.	-212.	-204.	-197.	-200.	-202.	-207.	-213.	-216.	-218.	-215.	-198.	-168.	-142.
Well-9	-498.	-483.	-474.	-470.	-475.	-473.	-464.	-483.	-496.	-521.	-524.	-522.	-510.	-501.	-487.	-489.	-477.	-465.	-461.	-478.	-496.	-522.	-547.	-543.	-531.	-515.	-487.	-392.	-249.
Well-7	-375.		-364.	-354.	-387.	-375.	-373.	-396.		-417.			-389.	-388.	-379.	-402.	-389.	-385.	-371.	-386.			-402.	-420.	-388.	-369.	-357.	-291.	-327.
Well-10	-242.	-239.	-230.	-236.	-241.	-242.	-241.	-247.	-244.	-257.	-269.	-269.	-262.	-259.	-256.	-254.	-246.	-237.	-232.	-220.	-260.	-249.	-256.	-256.	-252.	-247.	-233.	-208.	-227.
Well-11	-459.	-458.	-430.	-442.	-467.	-464.	-452.	-490.	-510.	-514.	-513.	-511.	-477.	-468.	-469.	-481.	-481.	-473.	-479.	-517.	-547.	-554.	-542.	-539.	-515.	-499.	-434.	-350.	-398.
Rain"	3.6	8.9	9.3	10.6	12.3	13.2	15.4	15.4	1.2	1.3	3.4	4.2	5.9	8.0	13.7	13.8	15.5	17.1	18.3	18.3	0.0	0.0	0.9	1.4	3.9	13.7	6.0	3.8	0.0

## WWD WATER PRODUCTION 2015-2017



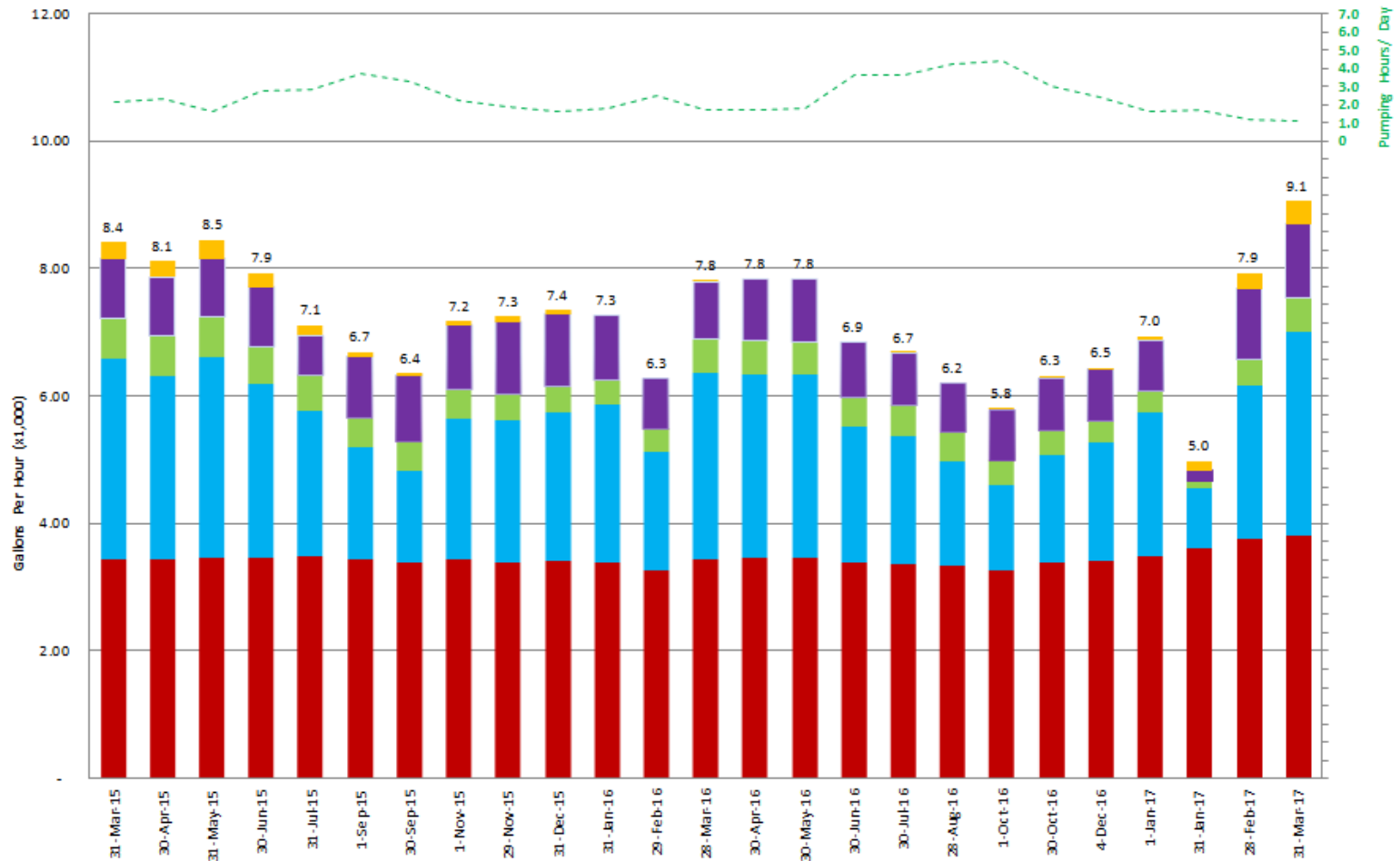
	Jan	Feb	Mar	Apr	May	Jun	Jul	Aug	Sep	Oct	Nov	Dec
<b>2015 Actual</b>	416,100	436,840	516,560	497,720	402,640	583,520	565,670	671,230	498,100	442,190	343,310	310,920
<b>2016 Actual</b>	390,900	362,800	342,620	343,400	384,400	639,900	644,700	702,200	654,860	550,660	554,750	314,110
<b>2017 Actual</b>	256,390	263,790	320,850									

### Monthly Average Daily Well Production Dec 2014 to Dec 2016



	30-Sep-14	31-Oct-14	6-Dec-14	1-Jan-15	31-Jan-15	28-Feb-15	31-Mar-15	30-Apr-15	31-May-15	30-Jun-15	31-Jul-15	1-Sep-15	30-Sep-15	1-Nov-15	29-Nov-15	31-Dec-15	31-Jan-16	29-Feb-16	28-Mar-16	30-Apr-16	28-May-16	30-Jun-16	30-Jul-16	28-Aug-16	1-Oct-16	30-Oct-16	4-Dec-16	1-Jan-17	31-Jan-17	28-Feb-17	31-Mar-17	
Usage KiloGPD	33.1	28.9	19.8	13.2	13.0	16.9	17.9	18.7	13.8	22.1	20.1	24.6	21.0	16.4	13.6	11.8	12.8	15.3	13.6	13.1	14.2	24.3	24.0	26.1	25.6	18.9	15.8	11.2	8.5	9.4	10.4	
well-3 KiloGPD	0.7	0.4	0.3	0.4	0.5	0.5	0.6	0.6	0.5	0.6	0.5	0.5	0.3	0.1	0.2	0.2	0.1	0.0	0.0	0.0	0.0	0.0	0.0	0.0	0.0	0.0	0.1	0.1	0.1	0.2	0.3	0.4
well-10 KiloGPD	4.2	3.9	2.6	1.4	0.4	1.6	2.0	2.1	1.5	2.6	1.8	3.6	3.4	2.3	2.2	1.8	1.8	2.0	1.6	1.6	1.8	3.1	2.9	3.3	3.5	2.5	2.0	1.3	0.3	1.3	1.3	
well-7 KiloGPD	2.9	2.6	1.8	1.0	0.0	1.0	1.4	1.4	1.0	1.6	1.6	1.7	1.5	1.0	0.8	0.6	0.7	0.9	0.9	0.9	0.9	1.7	1.7	1.9	1.7	1.2	0.8	0.5	0.2	0.5	0.6	
well-11 KiloGPD	10.4	8.5	6.3	4.8	4.3	6.7	6.7	6.6	5.1	7.6	6.4	6.4	4.8	5.1	4.1	3.8	4.3	4.6	5.1	4.8	5.2	7.6	7.2	6.8	5.9	5.0	4.6	3.7	1.6	2.8	3.7	
well-9 KiloGPD	15.0	13.5	8.8	5.6	7.7	7.0	7.3	7.9	5.6	9.7	9.9	12.7	11.2	7.8	6.4	5.5	6.0	8.1	6.0	5.8	6.3	12.2	12.1	14.1	14.4	10.2	8.4	5.6	6.2	4.4	4.4	
hours/day	4.3	4.0	2.6	1.6	2.2	2.0	2.1	2.3	1.6	2.8	2.8	3.7	3.3	2.3	1.9	1.6	1.8	2.5	1.7	1.7	1.8	3.6	3.6	4.2	4.4	3.0	2.4	1.6	1.7	1.2	1.1	

### Monthly Average Hourly Well Production Dec 2014 to Dec 2016



	31-Mar-15	30-Apr-15	31-May-15	30-Jun-15	31-Jul-15	1-Sep-15	30-Sep-15	1-Nov-15	29-Nov-15	31-Dec-15	31-Jan-16	29-Feb-16	31-Mar-16	30-Apr-16	30-May-16	30-Jun-16	30-Jul-16	30-Aug-16	1-Oct-16	28-Oct-16	1-Dec-16	30-Jan-17	4-Feb-17	28-Feb-17	31-Mar-17	28-Mar-17	31-Mar-17
Usage (Gal/Dayx1,000)	17.9	18.7	13.8	22.1	20.1	24.6	21.0	16.4	13.6	11.8	12.8	15.5	13.6	13.1	14.2	24.5	24.0	26.1	25.6	18.9	15.8	11.2	8.5	9.4	10.4		
Total (Gal/Hrx1,000)	8.4	8.1	8.5	7.9	7.1	6.7	6.4	7.2	7.3	7.4	7.3	6.3	7.8	7.8	7.8	6.9	6.7	6.2	5.8	6.3	6.5	7.0	5.0	7.9	7.9	9.1	
WELL-3 (Gal/Hrx1,000)	0.27	0.25	0.30	0.23	0.16	0.07	0.04	0.07	0.08	0.06	-	-	0.00	-	-	0.00	-	0.01	0.04	0.03	0.07	0.14	0.25	0.35			
WELL-10 (Gal/Hrx1,000)	0.92	0.92	0.91	0.94	0.63	0.97	1.04	1.01	1.15	1.14	1.01	0.79	0.91	0.97	0.99	0.87	0.82	0.78	0.79	0.82	0.82	0.80	0.17	1.12	1.17		
WELL-7 (Gal/Hrx1,000)	0.64	0.62	0.64	0.58	0.56	0.46	0.46	0.45	0.41	0.40	0.39	0.36	0.52	0.53	0.50	0.46	0.49	0.45	0.38	0.39	0.32	0.33	0.12	0.41	0.52		
WELL-11 (Gal/Hrx1,000)	3.14	2.89	3.14	2.73	2.28	1.74	1.44	2.22	2.21	2.34	2.47	1.86	2.93	2.87	2.87	2.11	2.01	1.63	1.34	1.68	1.86	2.27	0.94	2.40	3.21		
WELL-9 (Gal/Hrx1,000)	3.46	3.45	3.47	3.47	3.50	3.46	3.39	3.44	3.41	3.42	3.40	3.28	3.45	3.47	3.48	3.41	3.37	3.36	3.28	3.40	3.42	3.49	3.62	3.76	3.81		
Pumping Hours/Day	2.1	2.3	1.6	2.8	2.8	3.7	3.3	2.3	1.9	1.6	1.8	2.5	1.7	1.7	1.8	3.6	3.6	4.2	4.4	3.0	2.4	1.6	1.7	1.2	1.1		