



The Maunalei Sugar Co. Locomotive, "Waiahole," originally built in 1882, and brought to Lāna'i in 1899 (KPA-C12001).

LĀNA'I CULTURE &
HERITAGE CENTER

NĀ HOALOHA O LĀNA'I

Lāna'i CHC Board Members:

- Pamela Alconcel*
 - Duane & Sheila Black*
 - Martha Evans*
 - Anthony Freda*
 - David & Caron Green*
 - Colbert Matsumoto*
 - Albert Halape Morita*
- Executive Director:*
Kepā Maly

The Lāna'i Culture & Heritage Center is preparing to renovate part of the old Dole Administration building to house Lāna'i's artifacts and historical collections, passing the legacy of the people on to the future.

NĀ HOALOHA O LĀNA'I (THE FRIENDS OF LĀNA'I)

LĀNA'I CULTURE & HERITAGE CENTER TO HAVE A NEW HOME

Since October 1, 2007, the Lāna'i Culture & Heritage Center (Lāna'i CHC) has hosted more than 10,000 visitors and community support has been outstanding. Volunteers have helped to man the Center so that it has remained open during regular hours, cultural site service projects have been completed, and families from far and near have donated artifacts, cultural materials, plantation memorabilia and household items, historic photographs and old publications. And the collection continues to grow.

As a result, the Lāna'i CHC will soon be moving into a new location that will allow the Center to better house and share Lāna'i's rich cultural legacy and care for our growing collections. Earlier in the year the Lāna'i CHC signed a 15-year lease with Castle & Cooke Resorts, LLC for the center section of the former Dole Administration Building (DAB). The Center also leased additional space that will be used for archival storage. With the help of Lāna'i-raised architect, Charles H. Palumbo, the Lāna'i CHC has completed the design and permitting processes and has entered into a contract to begin renovation of the new spaces. Construction—including development of new exhibits, operational facilities, climate-controlled archival storage, and an ethno-botanical garden (with pineapple plants, native plants of Lāna'i, and plantation home garden plants)—is slated for completion by December of 2009.

This new era for the Lāna'i CHC has been a long time in the making. In 1987, members of Lāna'i's community, concerned that changes on Lāna'i would lead to the loss of cultural identity, historical resources and Lāna'i's unique lifestyle, formed agreements with Castle & Cooke, the Trustees of the Office of Hawaiian Affairs, and the State Department of Land and Natural Resources (Historic Preservation Division), which included the development of a community museum-heritage program. Work on museum and cultural awareness programs began shortly after the 1987 agreements, but momentum was not sustained.

Nineteen years later, in 2006, the Lāna'i Archaeological Committee (a partnership of Lanaians for Sensible Growth, Hui Mālama Pono o Lāna'i, Castle & Cooke, the Office of Hawaiian Affairs and the State of Hawai'i) embarked upon a new path, and formed a community non-profit charitable organization known as the Lāna'i Culture & Heritage Center.

In 2007, Kepa and Onaona Maly were asked by interim board members, Pamela Mae Alconcel, Martha Evans, Darrell Stokes and Gary Yokoyama, to open the Lāna'i CHC, and to build the program as envisioned years ago.

Renovations to begin soon for new Lāna'i CHC facility in Rooms 118 & 124 of the old Dole Administration Building. Work is expected to be finished in December 2009.



EXTERIOR VIEW OF LANAI CULTURE & HERITAGE CENTER FROM LANAI AVENUE

Finally, in 2008, recognizing the importance of the heritage program on Lānaʻi, Colette Machado and fellow Trustees of the Office of Hawaiian Affairs provided the Lānaʻi CHC with a generous grant with which to initiate planning, design and construction of a larger facility to house and share Lānaʻi's rich cultural legacy and care for the growing collections.

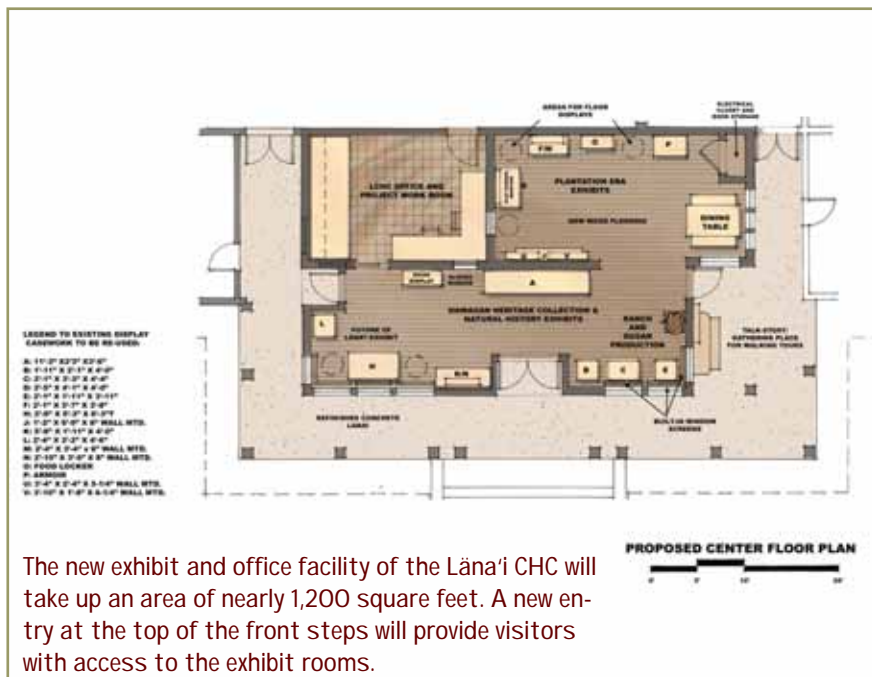
FUNDRAISING EFFORTS ARE KEY TO A SUSTAINABLE FUTURE OF THE LĀNA'I CHC COMMUNITY HISTORY PROGRAMS

As part of our effort to build capacity of the heritage program—to pass the rich legacy of Lānaʻi's history on to future generations—we have also engaged in fundraising efforts. The Lānaʻi CHC initiated a membership drive, in which people with interest in the history of Lānaʻi can select a "giving" membership amount to donate to support our efforts. This program is known as Nā Hoaloha o Lānaʻi (Nā Hoaloha). A second program is the upcoming Kealiʻi Reichel Concert which will take place on September 12, 2009, at the Four Seasons Hale Hālawai (Mānele Bay Resort). This concert allows the Lānaʻi CHC to meet one of the conditions of the grant given us by the Trustees of the Office of Hawaiian Affairs—that we engage in a robust fundraising effort.

KEALI'I REICHEL CONCERT ON SEPTEMBER 12, 2009 (7:00 p.m.)

On September 12, 2009, Kealiʻi Reichel, members of his hālau hula and musicians will come to Lānaʻi to help the Lānaʻi CHC in its fundraising efforts. The concert, being organized by Caron Green and Stu Marlowe, is presented through the generous donations of Kealiʻi Reichel and his Hālau, Four Seasons Resorts, Mike Carroll Art Gallery, Warren Osako, Hawaiian Airlines, Festivals of Aloha, and through the donations of many others who believe in the importance of documenting and passing the rich cultural legacy of Lānaʻi on to future generations.

THE PRIMARY GOAL of the concert is to raise enough money to record a detailed video-oral history program with Lānaʻi elders, and to develop it into a high quality series of historical video programs on the people of Lānaʻi. The programs will be used in the new Lānaʻi CHC exhibits, in educational programs at Lānaʻi High & Elementary School, as part of state-wide educational and public television programs, and as part of the on-line archive of the Lānaʻi



The new exhibit and office facility of the Lānaʻi CHC will take up an area of nearly 1,200 square feet. A new entry at the top of the front steps will provide visitors with access to the exhibit rooms.



CHC. Kepā and Onaona Maly have already begun development of a unique archive of Lānaʻi's history (the first of its kind in a Hawaiʻi community), spanning nearly 1,000 years of residency on the island. The growing website may be visited and researched at www.Lana'iCHC.org. A PayPal Link for donations to Lānaʻi CHC will also be posted soon..

A SECONDARY GOAL of the fundraising concert is to support the operational needs of the Lānaʻi CHC. The board and executive director of the Lānaʻi CHC seeks to build capacity for future generations of Lānaʻi's people to carry on and build upon the work of the Heritage Center.

Noboru Oyama and Warren Osako work on the historic photo collection, identifying early residents of Lānaʻi. (KPAC-9708)

It is the premise of the Lānaʻi CHC that knowledge of the past will enrich the lives of those who call Lānaʻi home, and create added value for everyone who visits Lānaʻi.

FOR MORE INFORMATION about the concert and programs of the Lānaʻi CHC, please call (808) 565-7177 or visit www.LanaiCHC.org. For tickets call Lea Hennessy at (808) 565-2426, or to book rooms at the special concert kamaʻāina rates at the Four Seasons Resort Lānaʻi- Mānele Bay, call (808) 565-3800.

TO FIND OUT HOW TO SUPPORT the Lānaʻi Culture & Heritage Center, or to join *Nā Hoaloha o Lānaʻi*, call (808) 565-7177 or email info@LanaiCHC.org. Your membership and donations offer you access to special programs, and opportunities to experience the history and landscape of Lānaʻi. Financial donations are tax deductible, and you will also have the satisfaction of knowing that you are helping to pass on the legacy of Lānaʻi's heritage to future generations.



*E Hoʻohanohano ʻana i ka wā ma mua, a e Hoʻolako ʻana i ka mua aku!
(Honoring the past, and Enriching the future!)*

*Donors to the Collections
(Artifacts, Documents and Historical items)
in the Lānaʻi Culture & Heritage Center:*

Christopher J. & Mary Ellen Allan	Joelle Aki Aoki	John & Winnie Basques	Isaac Belez
A. Duane & Sheila Black	Jeda Botelho-Hanog	Gregorio & Natalie Cabuslay	Paul Cleghorn
Isa Cocallas	Irene K. Cockett Perry	Alberta deJetley	Robert Dean
Roman Dombrigues	John Evans	Pete Felipe	Maggie Galinato-Silva
R. "Butch" Gima & family	Martha Haia Evans	Loretta Hellrung	Marcelina & Robert Hera
Jonie Hera Sarne & family	Robert and Doreen Hobdy	Walter Jarman	Lynette Kaopuiki
M. Kuuleialoha Kaopuiki Kanipae	Robin & Sally Kaye	Krista Kelley-Hammond	Kepā & Onaona Maly
Maggie Masicampo & family	Matsuko & Colbert Matsumoto		Barbara McIntyre
Ron Mcomber	John D. McPheeson	Jeff & Sherrie Menze	Natsuko Minami
Tamo Mitsunaga	Susan M. Miyamoto	Albert & Julie Morita	Bill & Jean Munro
Soledad & Lui Obado	Gordon Ohashi	Warren & Susan Osako	Noboru Oyama
G. Kamakani Palolo	M. "Suki" Richardson Nakoa		Jack & Clara Ross
Mike & Diana Schochet	Sam & Mary Shin	Jim Smith & Linda L.S. Caires	Phillip Sowers & Cory Labang
Bob & Jan Spieker	Jay & Gail Sullivan	Rodulfo Sumagit	Tamo & Sally Takahama
Brett Uprichard	Joana Varawa	Gary Yagi	Dole-Hawaiian Pineapple Co.,
-Castle & Cooke Resorts, LLC	Hui Kākoʻo (Coochie Cayan)		LHES Class of 1956
Lānaʻi High & Elementary School	The Bernice Pauahi Bishop Museum		The Kauaʻi Museum
The Lānaʻi Hongwanji Mission			



*Donations to Nā Hoaloha o Lānaʻi & the Kealiʻi Reichel Fundraising Concert
(April 11 to July 31, 2009): Benefactors, Sponsoring & Sustaining Hoaloha*

Festivals of Aloha	Mike & Kathy Carroll	Four Seasons Resorts	David & Caron Green
Hawaiian Airlines	Linden C. & Tom Hickey	Robert Kinoshita	Lane & Phyllis Loyko
Stu & Kathy Marlowe	Tom & Barbara McIntyre	Archie Nahigian	Lonny & Nadyne Orona
Warren & Susan Osako	Pine Isle Market, Ltd.	Kealiʻi Reichel	Castle & Cooke Resorts, LLC
Cultural Surveys Hawaii (Hal Hammatt)		Hālau Hula o Nāpua (Nāpua Brown-Kamelamela)	

(Donors list continued on page 4)

Lānaʻi Culture & Heritage Center and
Four Seasons Resorts Lānaʻi Presents



**KEALI'I
REICHEL
IN CONCERT**

**Saturday,
September 12th
at 7:00 p.m.**

**at Four Seasons
Resort Lānaʻi at Mānele Bay**

The program will also include a live auction featuring:

- (An original oil painting by Award Winning artist, Mike Carroll.
- Three nights in a suite for two at the Four Seasons Hotel Las Vegas, plus Round-trip air fare on Hawaiian Airlines.
- Three nights in a Suite for two at the Four Seasons Resort at Hualālai (Kona, Hawaiʻi).
- Koa Ukulele handcrafted by Warren Osako.

In addition, two nights at the Four Seasons Waileʻa will be given away in a Lucky Ticket Drawing (must be 18 or older and present to win).

RESERVE YOUR TICKETS NOW!

Call Four Seasons Resort Lānaʻi at Mānele Bay at (808) 565-2426, Monday-Friday between 10 am-4 pm.
Tickets are priced at \$40, \$80 and \$120.

All proceeds from tickets sales will go to the Lānaʻi Culture & Heritage Center and a portion of the ticket price will be considered a tax deductible donation.

Kama'āina, Visiting, Supporting & Student Hoaloha:

Rowena Jean Belez	Albert & Monica Borges	Kirk & Laura Bowman	Benita Brazier
Ruth Brodeur	Carol Bushèy	James & Sally Clemens	David & Elena Funada
Dwight Gamulo	David & Sheila Gardner	Nora K. Harmsen	Setsuko "Cookie" Hashimoto
The late Isamu Honda	Michael & Susan Hunter	Walter & Ellen Jinbo	Guy H. Kaulukukui
Larry & Nora Kawasaki	Kelvin & Phyllis Kurio	Lāna'i Fire Station Crew	Victoria Larsen
Astrid Liverman	Kepā & Onaona Maly	Billie J. Marks	Arnold Meister
Larry & Esther Meshel	Ellen C. Miller	Sue Murray	George & Sherry Ramaila
Mike & Diana Shaw	Dennis & Martha Stewart	Robert Todd & Clare McDermott	Wallace & Nancy Tamashiro
Arnold, Michelle & Tower James Vegara		☪ ☪ ☪ ☪ ☪ ☪	

We are also deeply indebted to the Trustees of the Office of Hawaiian Affairs, Castle & Cooke Resorts, LLC, The Maui County Office of Economic Development & Hawai'i Tourism Authority, and all donors who have supported our work since opening in October 2007. **MAHALO NUI!**—Your donations help us care for and protect our valued collections of artifacts and historical resources, and support programs which share Lāna'i's history with all who wish to learn about Lāna'i. We are humbled by, and appreciate your generous contributions.

Aloha nui nō - Kepā Maly, Executive Director



WITH A GRANT from the Maui County Office of Economic Development-Hawai'i Tourism Authority, Community and Archaeological volunteers and Castle & Cooke Resorts, LLC, the Lāna'i CHC is developing an interpretive trail at the ancient Kapiha'ā Village Site. In partnership with archaeologists from Cultural Surveys Hawai'i (under the direction of Hallett Hammatt, Ph.D.), and with labor support from LHES, the Hawaii Youth Conservation Corps, members of the Maui (Wailea-Kihei) Rotary Clubs, and community volunteers from Lāna'i, work has been initiated on improving view planes and trail access through the Kapiha'ā Village Preserve. Major work on the trail



was completed by a crew of 20 (see photo above) during the week of July 13-17, 2009. Interpretive signage will soon be set in place to help ensure respectful and informed travel through this wahi pana (storied site) on Lāna'i's landscape.

Lāna'i Culture & Heritage Center
(Honoring the Past, Enriching the Future)
P.O. Box 631500
Lāna'i City, Hawai'i 96763

Non-Profit
Permit
No. 24
Lanai, Hi
96763

Lāna'i Box Holder
Lāna'i City, Hawai'i 96763