

## Natural edge crotch bowls

are fun to turn and offer design opportunities, including heart shapes, while displaying pretty grain patterns.

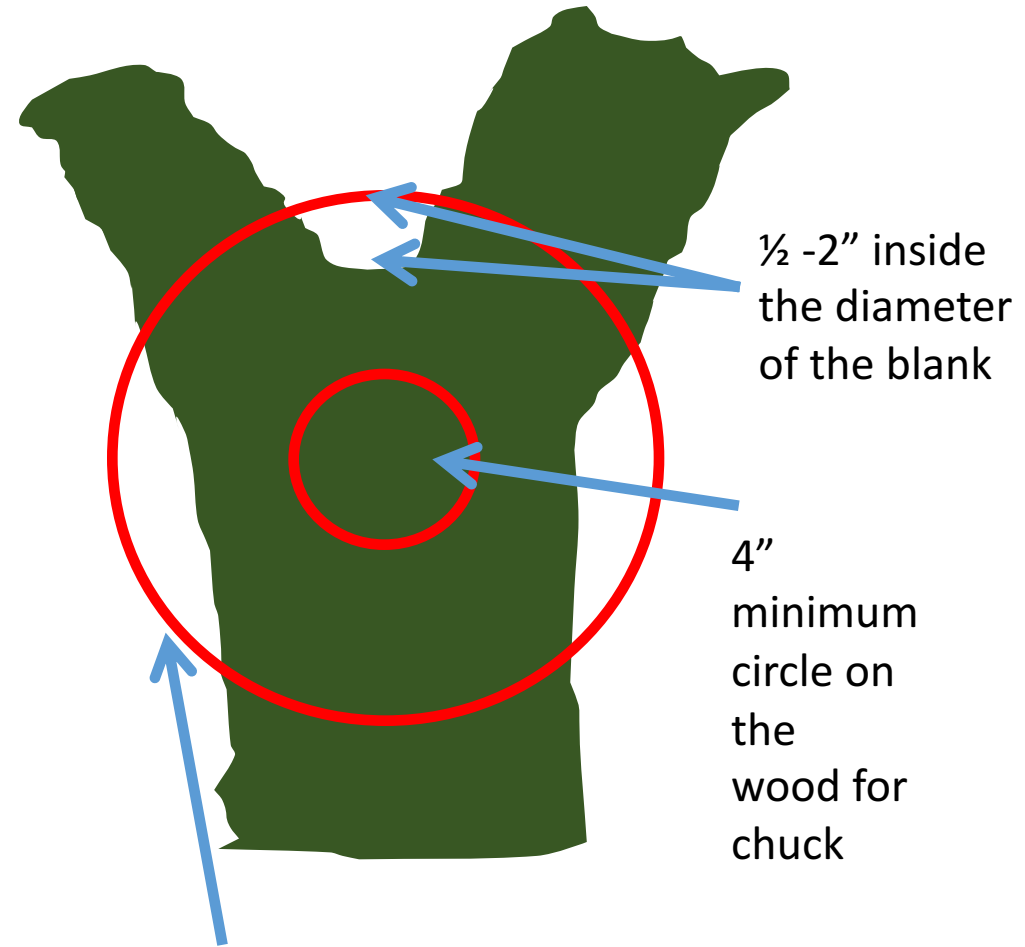


**Rough or stitched bark often indicates a bark inclusion which makes the blank unsafe to turn**



**Cutting the blank** begins by ripping the crotch with the chainsaw through the three piths. Ripping parallel to the pith about an inch or so will provide waste wood for the chuck or faceplate and yield one blank with great grain instead of two with average grain.

## Blank layout



11-10" diameter blank a good size for the first one

# Checking Rim Alignment

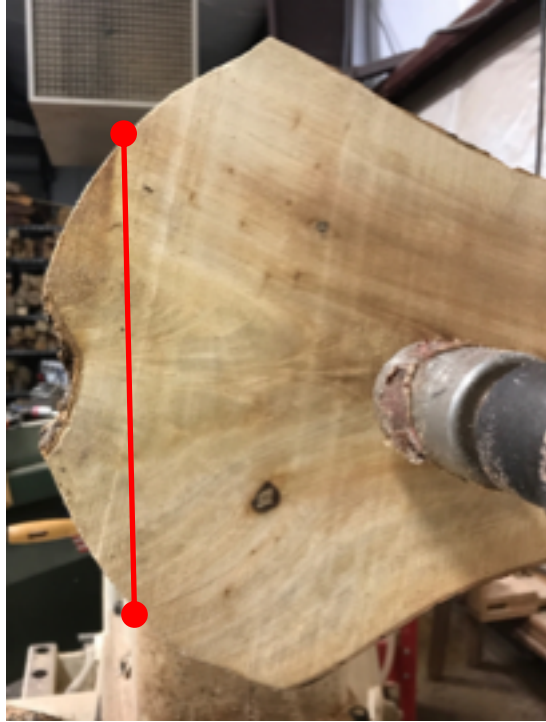
Thumb on the tool rest to mark where the edge of the wood meets the bark on one of the Y ends of the crotch

Keeping the thumb in place rotate the blank to another end of the Y for a comparison measure.

In this example the second y has to move to the right. Usually  $\frac{1}{2}$  the distance work since the other part of the y will be moving the other way.



# Align the rim high points that are closest together

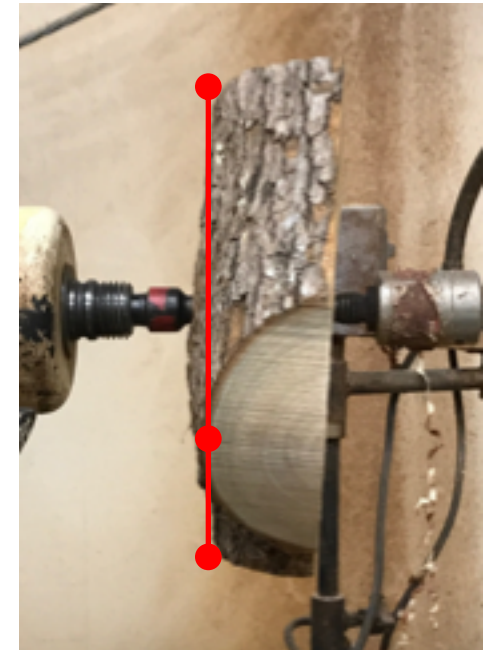


After checking the alignment, position the two closest together high points so they are in vertical alignment when viewed from the tailstock.

Keeping the two points in vertical alignment when viewed from the tailstock, loosen the tailstock and rotate the blank to align the two points so they are in true vertical alignment.



# Align the third rim with the first two



Position the two aligned ends at the top so that they are aligned horizontally.

Loosen the tailstock and move the top to align the third end with the first two. Move the first two together keeping them horizontal and not twisting the blank left or right.

Al Hockenbery  
Lakeland, FL

Additional information at:  
<http://swat.hockenbery.net/>