

FLOOR CHECK™
PRESENTATION

By

Duerson IPPI, LLC

In Association with

EnviroClean Solutions

PRESENTATION DETAIL

- ▶ Current Markets Served
- ▶ Floor Check™ Product Details
- ▶ Benefits of Floor Check
- ▶ Features of Floor Check
- ▶ Other Points
- ▶ Other Products Offered
- ▶ About Duerson IPPI, LLC
- ▶ Duerson IPPI, LLC Mission Statement
- ▶ About EnviroClean Solutions
- ▶ EnviroClean Solutions Mission Statement



Duerson IPPI, LLC



CURRENT MARKETS SERVED

- ▶ **Auto/Trucking** – Used to clean vehicles, including those heavily soiled with road tars and greases. Excellent product to clean municipal fleet vehicles (e.g., waste pick up equipment, buses, plows, and others).
- ▶ **Food Service** – Used to clean floors & walls, and production equipment, as a final application or prior to sanitation applications.
- ▶ **Manufacturing/ Industrial** – Can clean floors from minimal grime and dirt to extensive oil and grease concentrations.
- ▶ **Facilities Maintenance** – The ease of use, with minimal protective gear needed, makes Floor Check™ a good fit for companies that provide a wide range of cleaning services to clients.



Duerson IPPI, LLC



NATIONAL FLOOR SAFETY INSTITUTE



ENVIROCLEAN
SOLUTIONS

FLOOR CHECK™ PRODUCT DETAILS

- ▶ Duerson IPPI, LLC has partnered with EnviroClean Solutions to provide a product that will assist companies in 1) Enhancing Safety; 2) Increasing Sustainability; 3) Improving Housekeeping; and 4) Lowering Costs.
- ▶ Floor Check™ is the most advanced cleaning and degreasing floor care product in the industry. Over ten years in development and design, Floor Check™ is proven to increase safety and cleanliness in industrial and other environments.
- ▶ ECS Floor Check™ dual action product is specially formulated to provide excellent cleaning and degreasing results as well as impart a unique no-slip technology to hard surfaces to help prevent slip and fall accidents.
- ▶ The nontoxic, 100% biodegradable formula can be used for a wide variety of surfaces including concrete floors, concrete pads, tile floors, and marble and stone.



BENEFITS OF FLOOR CHECK™

- ▶ Floor Check™ will lead to:
 - ▶ Enhanced facility sanitation, at a lower cost. Most other cleaning products only dilute to a 50/50 ratio of product/water; in many applications, Floor Check™ can be diluted to 30/70 or less of a product/water ratio.
 - ▶ Increased “non-slip” status of floor surfaces. Safety Administrators and Insurance Providers know the benefits coming from surfaces with a better friction aspect.
 - ▶ Improved wastewater quality indicators, such as better BOD’s and reduced solid suspension. This can lead to reduced costs of waste water treatment and discharge.
 - ▶ Reduced costs of Risk and Health Insurances for employees – Floor Check™ contains no harmful ingredients, allowing application without none to minimal restrictive protection gear.



Duerson IPPI, LLC



FEATURES OF FLOOR CHECK™

- ▶ Classified as NOT HAZARDOUS under OSHA regulations – it has no known adverse effect on human health and does not contain any Hazardous Air Pollutants (HAP), as defined by the U.S. Clean Air Act Section 112 (40 CFR 61).
- ▶ This 100% Eco-friendly, Advanced Green Chemistry product is Biodegradable, reducing the impact on the environment through waste water discharge. There are no VOC's (Volatile Organic Compounds). Unlike most products, Floor Check™ contains no acids, alkalis, or solvents, yet is still capable of cleaning surfaces with heavy grease and oil concentrations.
- ▶ Compatible with all auto-scrubbing machinery (e.g., Tennant, Advance Condor, Clean Freak, etc.)
- ▶ Is Stable, with a minimum 6 month shelf life
- ▶ Is not an eye or skin irritant, reducing the amount of protective equipment needed



Duerson IPPI, LLC



OTHER POINTS

- ▶ Application is by any cleaning method (mop, brush, spray wand, mechanical scrubber, etc.)
- ▶ Will not impact painted safety stripes or other surface applications
- ▶ Based on application, dilution is up to 80% - other products generally dilute only to 50%



Duerson IPPI, LLC



OTHER PRODUCTS OFFERED

- ▶ ECS 770 Hard Surface Cleaner/Degreaser
- ▶ ECS 990 All Purpose Cleaner/Degreaser
- ▶ ECS CoilPRO™ HVAC Coil & Condenser Cleaner

*All ECS products are 100% biodegradable



ABOUT DUERSON IPPI, LLC

- ▶ Formed in 2009, Duerson IPPI, LLC was conceived as a means for Owner/President Michael T. Duerson to bring his broad experience, knowledge, and vast network of companies and associates to:
 - ▶ Provide solutions for emerging technologies and/or products in need of improved manufacturing processes, enhanced distribution and marketing opportunities, or proper positioning for sales growth; and
 - ▶ Mentor/consult for others in need of professional management assistance.
- ▶ From this beginning, Duerson IPPI, LLC has now fully emerged, with concepts converted into reality, products created/modified for specific markets, and mentoring/sales assistance having been provided for several entrepreneurial companies.



Duerson IPPI, LLC



DUERSON IPPI, LLC MISSION STATEMENT

- ▶ Duerson IPPI, LLC will increase member value while adhering to the highest standards of business conduct. These steadfast expectations provide the foundation for our commitments to those with whom we interact: members, customers, employees, and communities.



ABOUT ENVIROCLEAN SOLUTIONS

- ▶ EnviroClean Solutions has over 30 years of formulating and manufacturing experience.
- ▶ Product formulating and manufacturing is done in the Research Triangle Park, NC facility.
- ▶ EnviroClean Chemists and Engineers are committed to “green chemistry”.



Duerson IPPI, LLC



ENVIROCLEAN SOLUTIONS MISSION STATEMENT

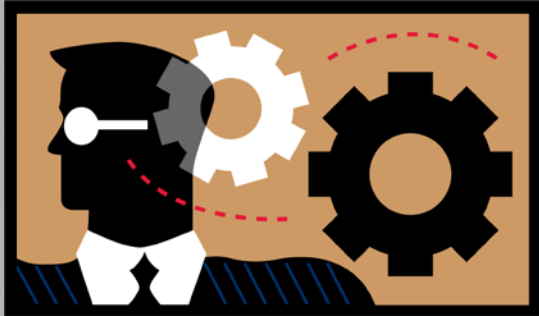
- ▶ EnviroClean Solutions is a chemical sciences based company committed to providing innovative green technology products that are 100% biodegradable, and non-toxic and provide high performance cleaning, safety, and value for our customers.



Duerson IPPI, LLC



Contact information:



Duerson IPPI, LLC



Michael T. Duerson, Sole Member

1807 E. Hines St.

Muncie, IN 47303

Ph: (847) 707-2332

www.duersonippillc.com