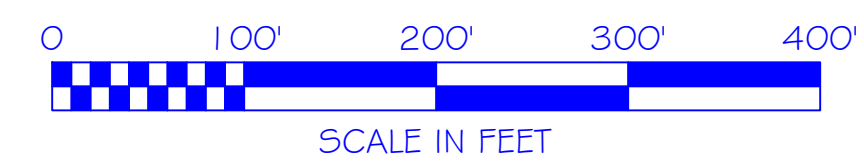
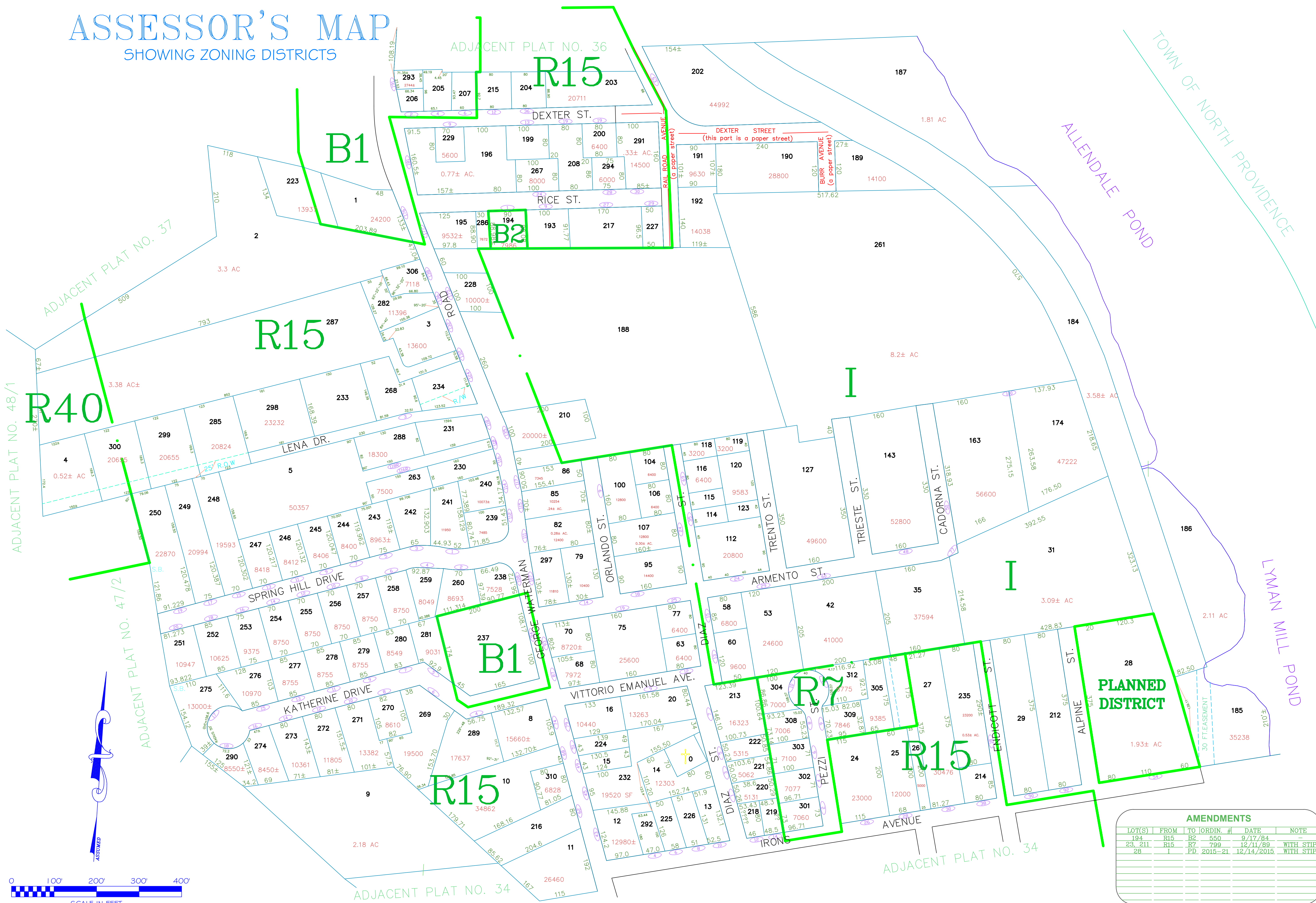


ASSESSOR'S MAP

SHOWING ZONING DISTRICTS

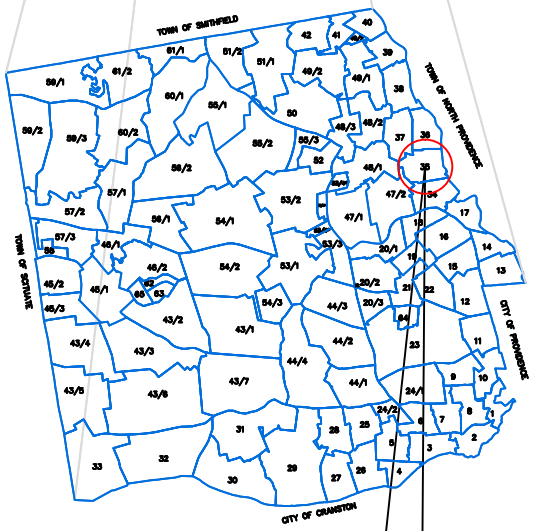
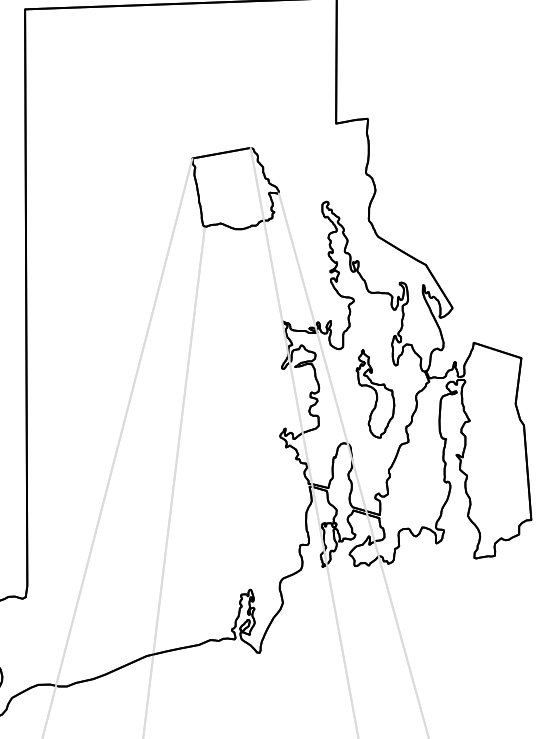
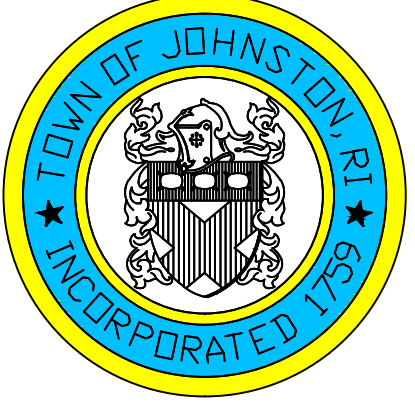


AMENDMENTS						
LOT(S)	FROM	TO	ORDIN. #	DATE	NOTE	
194	R15	B2	550	9/17/84	-	
23, 211	R15	R7	799	12/11/89	WITH STIP	
28	I	PD	2015-21	12/14/2015	WITH STIP	

Assessor's Plat Number

35

STATE OF RHODE ISLAND
 TOWN OF JOHNSTON
 PROVIDENCE COUNTY
 INCORPORATED 1759
 ASSESSOR'S OFFICE
 1385 HARTFORD AVENUE
 JOHNSTON, RHODE ISLAND
 02919



PLAT INDEX
AREA

Scale: 1:100
 Revised By: Benjamin Ng
 Last updated: January 04, 2016
 Date printed: July 07, 2016

For copies of plat maps, please go to the DPW at 100 Irons Avenue Johnston Rhode Island. Thank you.

NOTE: This map was prepared for the use of the Town of Johnston for assessment and illustrative purposes only. It does not represent a survey of the premises. No liability is assumed as to the sufficiency or accuracy of the data delineated hereon.