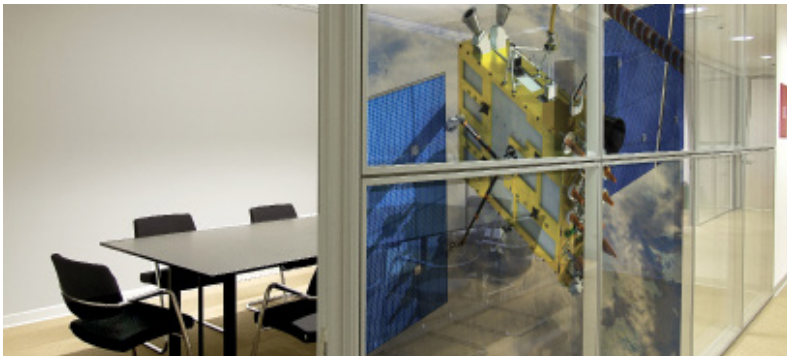




**Décor Applications**

Call today to discuss **YOUR** solution!

**1-888-455-6300**



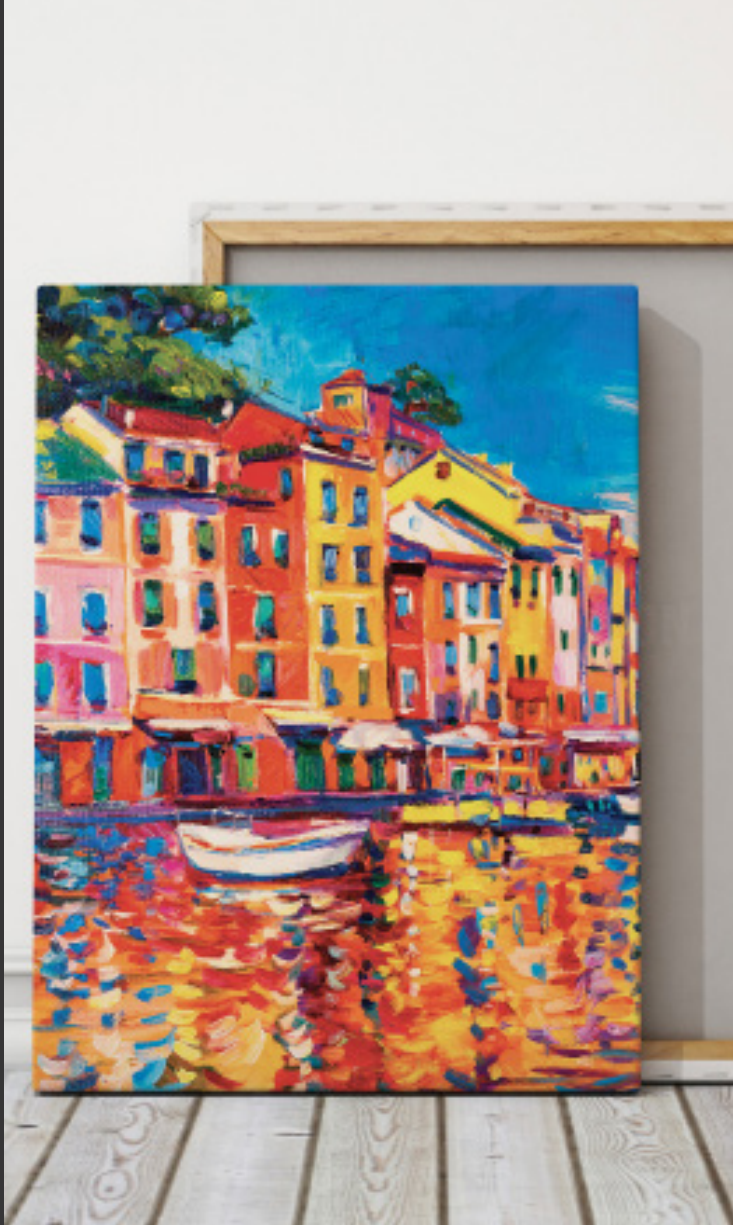
# Grand Opening Décor that Connects to the Community

With less than a week before his grand opening, State Farm agent Will Rentschler came to Digital Now needing décor and signage in a hurry – and we delivered. We created a sharp new welcome sign and more than 20 beautiful prints of Pensacola landmarks in floating frame kits, and had them all installed onsite in less than 48 hours.

### *Signage Sizes Executed*

- 4 - 18x24
- 12 - 24x36
- 2 - 36x36
- 4 - 30x46
- 2 - 40x60
- 4 - 36x48
- Floating Frame Kits
- 1 A-Frame sign
- Cut vinyl letters

**DIGITAL NOW**



***Specializing in all of your wide format  
printing needs since 1978.***

[www.digitalnowinc.com](http://www.digitalnowinc.com)