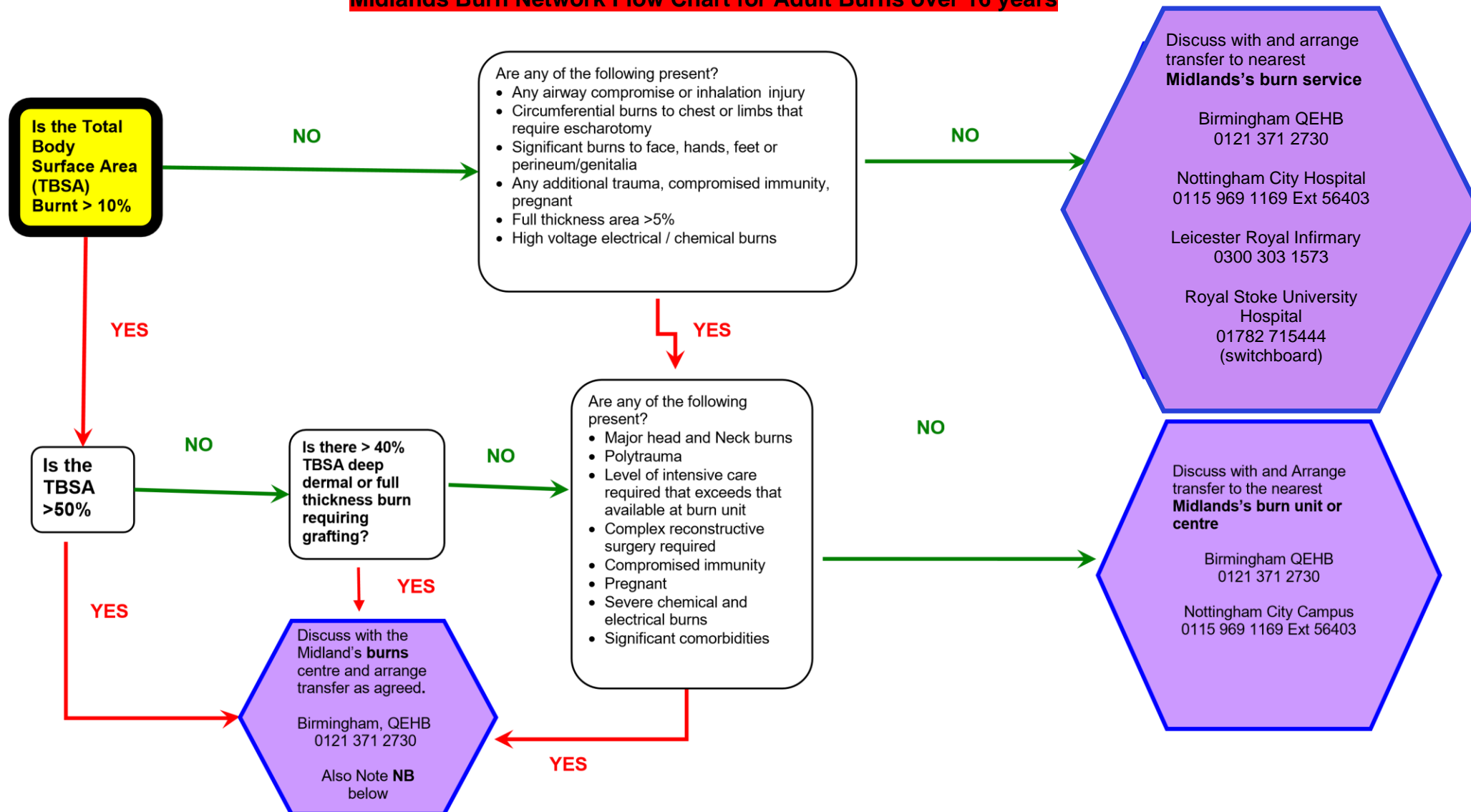


## Burn Service Thresholds

Below are flow charts of which burn service patients should be treated at and contact numbers. This is to be used in addition to the full document. **However if unsure contact your nearest burns service for advice**

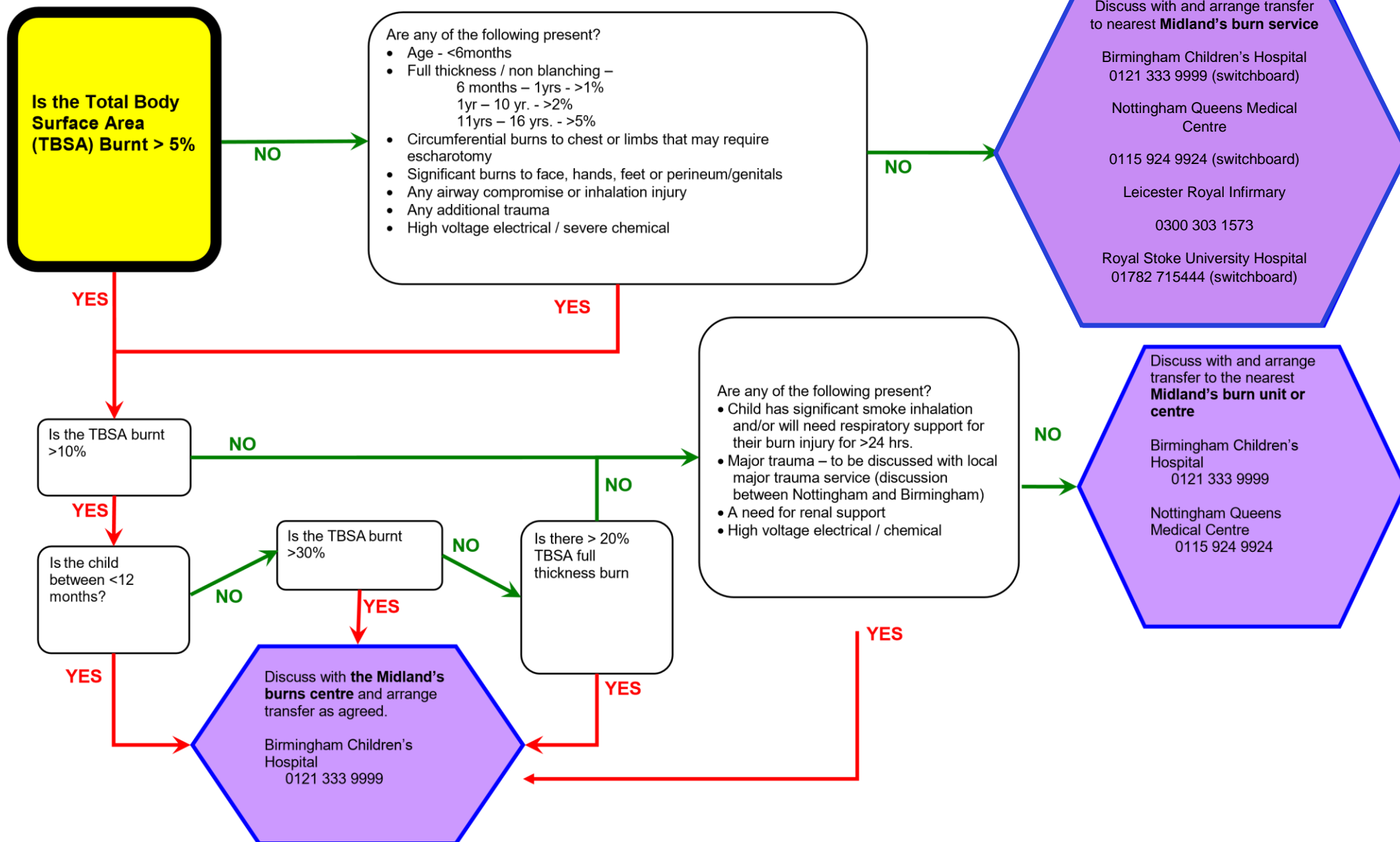
### Midlands Burn Network Flow Chart for Adult Burns over 16 years



All patients with >25% burns should be discussed with on call burns consultant at Burns Centre (Birmingham)

**NB.** If consider Patient has a Non Survivable Burn Injury, follow Network guideline: The Assessment, Care and Transfer of Adult Patients with potentially non survivable burn injuries in an Emergency Department

# Midlands Burn Network Flow Chart for Paediatric Burns <16 years



All children admitted with TBSA 20-30% into a burns unit – Burns centre to be informed.

All neonates with facility level injury – to be referred to burns unit, Neonate with unit level injury – to be referred to burns centre

Revised 02.2015 MB ODN CAG