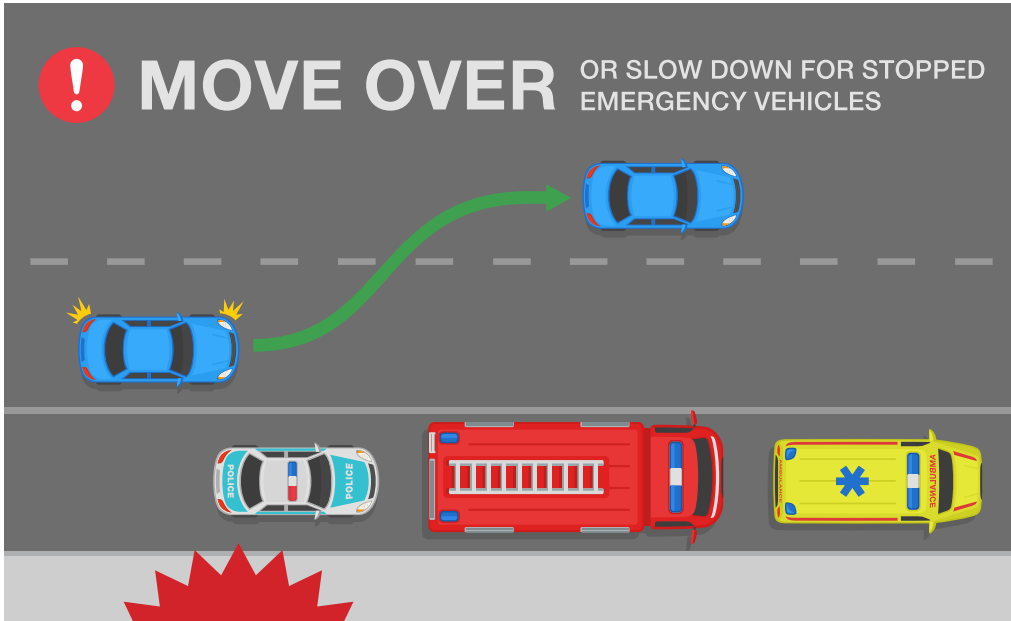
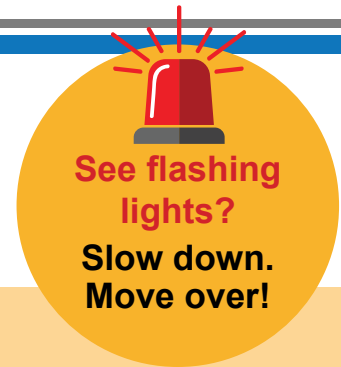


New Changes to Roadside Worker Safety Rules - Effective September 1, 2023



Drivers must slow down when passing all roadside workers – just like you do now for police, ambulances, fire trucks and tow trucks.

When you drive in the closest lane to any stopped roadside vehicle with flashing lights, you must move over to the far lane to give workers extra space. If you can't safely move over, you must slow to at least 60 km/h, or the posted speed limit (whichever is lower).

New Fines

Drivers who fail to comply with the new safety rules could receive a \$243 fine and 3 demerits. These fines apply when any stopped roadside vehicle with flashing lights activated are present.

Passing Snowplows

Drivers must not pass a snowplow when:

- the view along the side of the snowplow is obstructed.
- passing would impede the operation of the snowplow.
- the act of passing cannot be done safely.

Drivers who fail to comply with any of these actions could receive a \$324 fine and 3 demerits.



Your Guide To Powerline Safety & Farming

Here are tips how to stay safe around powerlines and poles

Check the height of your new equipment

If you're buying it new, confirm the height, update your GPS with any changes and consider your route to ensure you can cross safely under power lines.

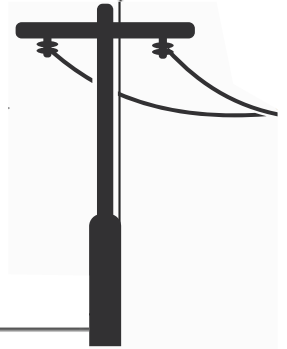
If the height of your load is more than **4.15 meters**, it's considered "over height" and you'll need to get a permit from **Alberta Transportation**.

If the height of your load is more than **4.15 meters**, give us a call! We'll help plan the safest and most efficient route.

If needed, we'll escort the move and lift or move the power lines.

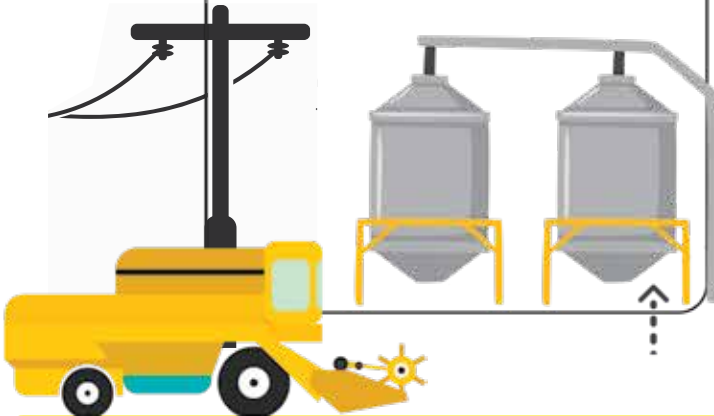
Stay 7 meters away from power lines

Keep this in mind when operating equipment like grain augers and air seeders, or when lifting truck boxes or back hoes.



Stack & store wisely

Whether it's a grain bin or bale storage, stack and store it at least **7 meters** away from power lines.



Plan before moving tall equipment

Map your route and locate any overhead power lines. If you don't know whether it's safe to cross under or work next to power poles and lines, call BRPC for help: **1.877.428.3972**



Call before you dig!

Before digging or driving posts into the ground, talk to **Utility Safety Partners** to request an underground locate. Utilities are closer to the surface of the ground than you think.

Assume downed power lines are energized. Stay at least **10 meters** away and warn others of the danger. Call **911** or BRPC's 24-hour toll-free line: **1.877.428.3972**.



A reminder to farmers in the field: if you notice a guy wire without a red or yellow tube on it, please let us know.

Regulated Rate Option (RRO)

The RRO rate may increase or decrease from month to month as it is priced on the open market and subject to many factors relating to supply and demand. If you do not have a contract with an electricity retailer, then you receive the default RRO rate.

For August 2023, the RRO is priced at \$0.30026 per kWh, which is reflected on your enclosed bill. For September 2023, the Battle River Power Coop monthly RRO billing rate for FENN REA members is \$0.24435. The RRO rate is also listed on www.fennrea.com.

Members are free to purchase natural gas services or electricity services from a retailer of their choice. For a list of retailers, visit ucahelps.alberta.ca or call 310-4822 (toll free in Alberta).