

SCX-5935FN



Monochrome Laser Copy/Print/Scan/Fax

Security Features

Secure Print

Send a confidential job to the SCX-5935FN, and it will hold the job until you release it with your password at the touch screen.

Delay Print

You can send a large job, then have it print during off-hours, to increase security and printer availability.

Hard Drive

Your data is safe. Data is stored using 128 bit encryption. Image overwrite electronically "shreds" data stored on hard drive automatically after every job as scheduled by an administrator.

Network Authentication

Restricts device access by validating user name and passwords.

Fax Security

Network and phone lines are isolated to eliminate incoming fax-based network virus attacks. Incoming faxes can be set to print only when you authorize them at the touch screen control panel.

Secure Network

Communications with industry standards including SNMPv3.0, SSL, HTTPS.

SCX-5935FN Dimensions



Specifications

SCX-5935FN

Print	
Speed (Mono)	Up to 35 ppm in Letter, Duplex printing: up to 18 ppm
First Print Out Time (Mono)	Less than 8.5 seconds (From Ready mode)
Resolution	Up to 1200 x 1200 dpi effective output
Processor/Emulation	360 MHz/PCL5e, PCL6, PostScript Level3, PDF 1.4, TIFF
Duplex Print	Standard
Copy	
Speed	Up to 35 cpm in Letter (Simplex), Up to 18 cpm (Duplex)
Resolution	Up to 1,200 x 1,200 dpi effective output
First Copy Out Time	Platen: Less than 9.5 seconds (From Ready mode), DADF : Less than 11.5 seconds (From Ready mode)
Zoom Rate	25-400% (platen), 25-200% (ADF)
Multi Copy/Duplex Copy	1-999 pages/Standard (1:2, 2:2, 2:1)
Copy Features	ID Copy, 2-up, 4-up, Poster Copy, Clone Copy, Collation Copy, Auto-fit, Book Copy, Margin shift, Covers, Transparencies, Booklet, Save to file, Erase edge, Book center erase, Page numbering, Time&Date stamp, ID stamp, Erase background
Scan	
Compatibility/Method	TWAIN Standard, WIA Standard/Color CCD
Resolution (Optical/Enhanced)	Up to 600 x 600 dpi/Up to 4,800 x 4,800 dpi
Scan To	PC, Email, USB Memory, FTP, SMB
Effective Scan	Platen: 11.6" x 8.2", DADF: 13.7" x 8.2"
Bit Depth	Color Internal: 36 bit, External: 24 bit, BW: 1 bit for test mode, 8 bit for gray mode, grayscale 256 levels
Other	Security email via SSL; Network Authentication; (SMB, LDAP, Kerberos)
Fax	
Compatibility/Mode	ITU-T G3 (MH/MR/MMR/JBIG/JPEG)
Modem Speed/Resolution	33.6Kbps/Standard: 203 x 98 dpi, Fine/Photo: 203 x 196 dpi, Super Fine: 300 x 300 dpi, Color: Up to 200 x 200 dpi
Memory	HDD Backup (Receive: Approx. 2,000 pages, Send: Approx. 500 pages)
Auto Dial	Speed dial : 200 Locations, Up to 100 Group dial locations
Fax Features	On hook Dial, Auto Redial, Last Number Redial, Auto Reduction, Multi-send, Delayed Send, Fax forwarding (Email/Fax), Broadcasting up to 209 locations
Paper Handling	
Input Capacity and Types	500-sheet Cassette Tray, 50-sheet Multi-purpose Tray, 16 to 28 lb./60 to 105 gsm
Output Capacity and Types	250-sheet Face Down
Media Size	3" x 5" - 8.5" x 14"
Media Type	Plain, Thin, Thick, Recycled, Cotton, Transparency, Label, Cardstock, Bond, Envelope, Archive, Pre-Printed, Colored
DADF Capacity	70-sheet, 16 to 43 lb./60 to 163 gsm
ADF/Document Size	Width: 5.6" - 8.5" Length: 5.8" - 14"
General	
LCD	7" WVGA (800 x 480) Color Touch Screen
Memory/Storage	256 MB (Max. 512 MB) / 80GB HDD
OS Compatibility	Windows 2000/2003/2008 Server/XP/Vista, Various Linux OS, Mac OS X 10.3-10.5, Windows Terminal Services, Citrix Presentation Server (Compatible), SAP (Compatible), Windows Terminal Services
Interface	Hi-Speed USB 2.0, Ethernet 10/100BaseTX
Noise Level	Less than 52 dBA (Printing), Less than 54 dBA (Copying), Less than 39 dBA (Standby)
Duty Cycle, Monthly	80,000 pages
Dimension (W x D x H)	19.6" x 18.3" x 21.5"
Weight (with consumables)	50.88 lbs.
Power Consumption	Sleep mode: 25W, Ready mode 100W, Avg. 600W
Power Requirement	110-127V AC (-10% - 6%)/7A
Operating Conditions	Temperature: 10-32°, Humidity: 20-80%RH
Security	Image Overwrite Security, SSL, Authentication, HTTPS, SecurePrint, SecureFax, SNMPv3, IPfiltering, IEEE 802.1x
Consumables	
Yield	High Yield: Average Cartridge Yield 10,000 standard pages. (Ships with 4,000 pages Starter Toner Cartridge) Declared Cartridge Yield in accordance with ISO/IEC 19752
Type	Single Cartridge
Model Code	SCX-5935FN: MLT-D206L
Options	
Options	500-sheet Cassette Tray, Memory : 256MB, Samsung's Embedded Solutions Platform Enabler Kit (Available From Q1 '09)

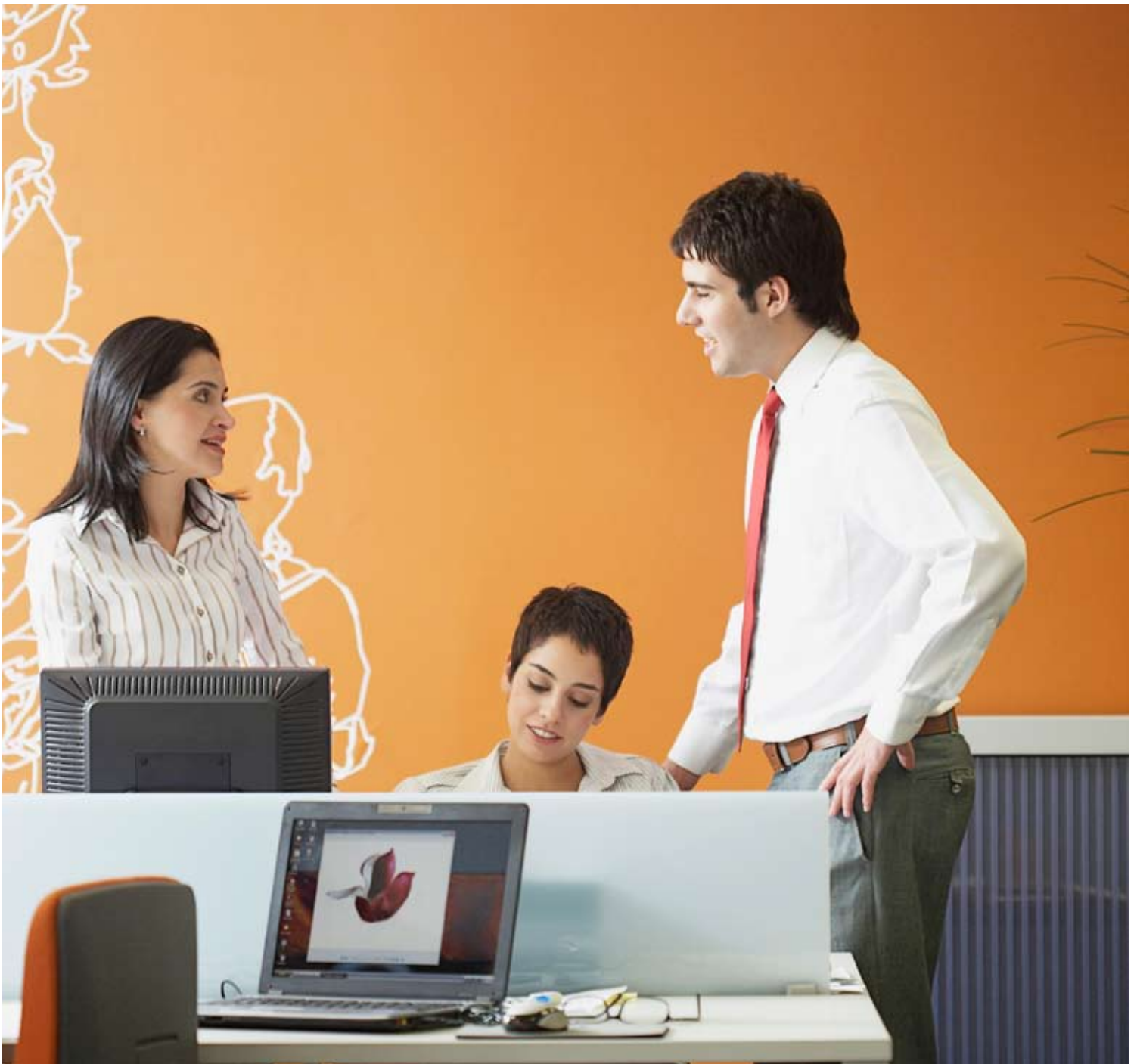
Product Information: 1-800-921-1202
Product Support: 1-877-873-7279
www.samsung.com/mfp

 star program
SAMSUNG Toner Recycling Program
www.samsung.com/starus



Distributed by:





A complete office solution in a compact package.

SCX-5935FN Monochrome Laser Multifunction Printer
Copy/Print/Scan/Fax



Samsung SCX-5935FN

The more efficient your equipment, the more efficient you can be. The Samsung SCX-5935FN is the workgroup copy/print/scan/fax machine for those who want to maximize the amount of work they do in a minimal amount of time. Allowing more time to relax and enjoy the accomplishments of the day.

The SCX-5935FN is a high-performance machine.

Fast and High Performance Keep up with busy workgroups with speeds of 35 ppm and a duty cycle of up to 80,000 pages per month.

High Paper Capacity A 50-sheet multipurpose tray that can accept three different sizes of paper, standard 500-sheet cassette and optional 500-sheet cassette add up to 1,050 pages, and more work with fewer trips to restock paper.

Multi-Format Versatility The SCX-5935FN can print all of the most popular formats, including PostScript, PCL, PDF and TIFF files, making it a flexible team player in your office.



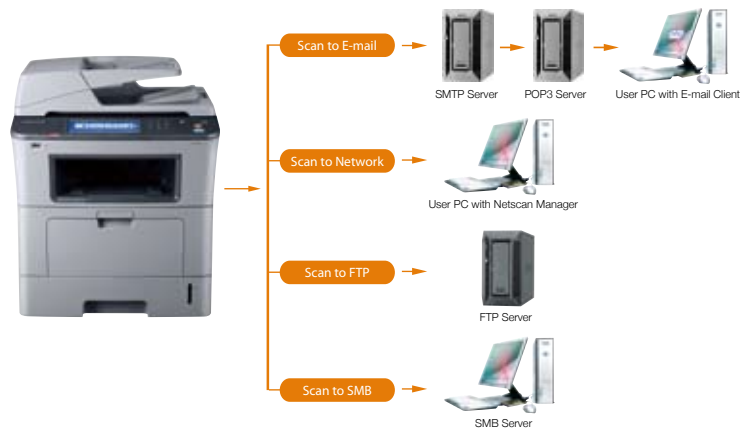
Economical Duplex Scanning and Printing Scanning both sides of a document and printing on both sides of a page saves time, saves money and is easier on the environment.

The SCX-5935FN is a powerful scanner.

Color Scanner The SCX-5935FN's enhanced scanning resolution (4800 x 4800 dpi) and color CCD give you the finest quality images for your documents. It's also easy way to capture and store information from hard copy documents.

Scan to Network You can store and share documents easily by converting them to a PDF, TIFF or JPEG file. Then you can send it directly to any server or PC, or anywhere else on your network.

Network Scan Management with LDAP Scan-to-email provides address book function using an LDAP server. The LDAP (Lightweight Directory Access Protocol) is a networking protocol for querying and modifying directory services running over TCP/IP. With this feature, the most up-to-date email address book will always be available. PDF, JPEG and TIFF file formats are supported for digital scanning, and settings for SMB, FTP and LDAP servers should be executed through SyncThru™ Web Service.



The SCX-5935FN is easy to use.

Advanced Color Touch Screen The 7" color touch screen guides you with large, easy-to-understand icons. Even new employees will soon be copying, printing, scanning and faxing like a pro. And if help is needed, touching the Help button will give additional instructions.

Fast Installation Unpack it, pop in the toner cartridge, plug in the power, plug it into your network, find it with your computer, and you're ready to start working faster and more efficiently.



The most important feature is the name.

Of the many features the Samsung SCX-5935FN offers your business, the most useful feature of all is the fact that when you really need it, it will be there for you. Samsung leads the industry in reliability and dependability. Samsung wins reliability and design awards from the most knowledgeable and trusted organizations in the industry, including PC World and BLI (Buyers Laboratory, Inc.). Samsung invests billions (more than \$6 billion last year) into R&D every year, creating innovative, reliable and beautifully designed machines your business can count on.

SCX-5935FN Features

- 1. 70-Sheet DADF (Duplex Automatic Document Feeder)** Scans both sides of the page for automatic duplex printing, saving time and money.
- 2. Document Width Guides** Minimizes jams and keeps your job printing smoothly
- 3. Document Input Tray** Auto document feeder adds speed to small jobs
- 4. Document Output Tray** ADF system adds speed and convenience
- 5. USB Port** Print from and scan to files without a PC
- 6. Touch Screen Control Panel** Large 7" color LCD is intuitive
- 7. Document Output Tray** 250-sheet output makes big jobs easier
- 8. Multi-Purpose Tray** 50-sheet multipurpose tray for non-standard media
- 9. Paper Tray** 500-sheet capacity lets you load up for big jobs
- 10. Paper Supply Indicator** Shows how much paper remains
- 11. Power Switch** Energy Star-certified to use less power
- 12. Power Cord Receptacle** Energy Star-certified to use less power
- 13. Service Host Port** Allows firmware downloads and enables Samsung's Embedded Solutions Platform
- 14. USB Port** Ready to plug in
- 15. Ethernet Port** Easily connects to your existing network
- 16. Telephone Socket (Top) and Extension Telephone Socket (Bottom)** Easily connects to your existing system
- 17. Toner** High-yield cartridge yields 10,000 pages



Easy-to-Use 7" Touch Screen LCD Control Panel

- Intuitive touch screen operation is easy to learn and navigate, making user training a snap.
- Control security and manage your jobs right from the control panel. Enter codes to access jobs. Rearrange jobs in the queue for maximum efficiency.
- Advanced fax functions such as email forwarding can be easily managed from the touch screen control panel.

Touch Screen Panel

- 1. Machine Setup** Quick and intuitive setup
- 2. Job Status** Reprioritize jobs for efficiency
- 3. Status** Lets you know you're online
- 4. Screen** 7" color touch screen is highly intuitive
- 5. Number Keypad** Allows entry of up to 500 access codes
- 6. Clear** Lets you re-enter information
- 7. Redial/Pause** Saves time
- 8. On-Hook Dial** Lets you hear dial tone so you can navigate an automated answering system
- 9. Interrupt** Lets you interrupt one job to perform another
- 10. Clear All** Restores all custom settings to defaults
- 11. Power Saver** Puts unit to sleep after inactivity to save power
- 12. Stop Button** Lets you cancel a job and begin again
- 13. Start Button** Starts copying/printing at speeds up to 35 cpm/ppm

