



Comfortable, quiet living awaits you at the Legacy Senior Residences, where contemporary architectural detailing is complimented by naturally landscaped terrain, accented with native trees and shrubs.

You will be pleasantly surprised by our affordable rental rates made possible through special considerations to those individuals that may earn less than the median area income.

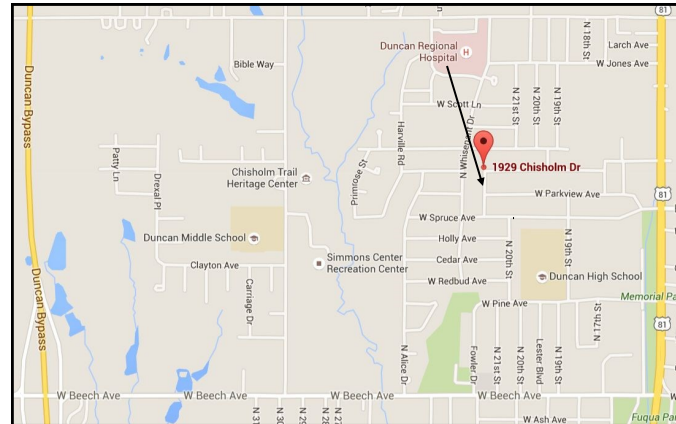
Legacy offers a quality lifestyle and affordable living in close proximity to many city services, shopping, banking, post office and grocery store.

Look no further than the Legacy Senior Residences for your new home.



**MAP**

1745 Legacy Drive  
Duncan, OK



**LEGACY SENIOR  
RESIDENCES**

**1745 Legacy Drive  
Duncan, OK 73533**

**Phone: (580) 255-4141**

**Fax: (580) 252-2553**

**[www.beacon.cc](http://www.beacon.cc)**



**Managed By:**



209 S 19th Street  
Suite 100  
Omaha, NE 68102  
[www.beacon.cc](http://www.beacon.cc)





# The Legacy Senior Residences

## Modern Affordable Independent Living for Active Seniors Age 62 or better!



### Legacy Senior Residences Offers Affordable Luxury Living

- ◆ Elevator & Indoor Mail Delivery
- ◆ Controlled Access Entry with Intercom
- ◆ Off Street Parking—Garages
- ◆ Non Smoking Community
- ◆ Beautiful Community Room
- ◆ Large Dining Area with Serving Kitchen
- ◆ Outdoor Porch and Seating Areas
- ◆ Storm Shelter
- ◆ Fitness Center &
- ◆ On-Site Manager
- ◆ 24 Hour Emergency Maintenance

### One and Two Bedrooms Available

#### One Bedroom Homes

752 - 874 Square Feet

#### Two Bedroom Homes

882 Square Feet

Security Deposit Required = 1 month rent or \$500 which ever is lowest.

\*Income Restrictions Apply

Small pets welcome with appropriate fees. See Manager for details.

### Welcome to Your New Home!

- ◆ Custom Fit Window Blinds
- ◆ Wall to Wall Carpet
- ◆ Paid Utilities!
- ◆ Energy Star Rated Appliances:
  - \*Frost Free Refrigerator
  - \*Self-Cleaning Oven
  - \*Built-in Microwave
  - \*Dishwasher
  - \*Disposal
  - \*Full Size Washer & Dryer Included

**Phone: (580) 255-4141**