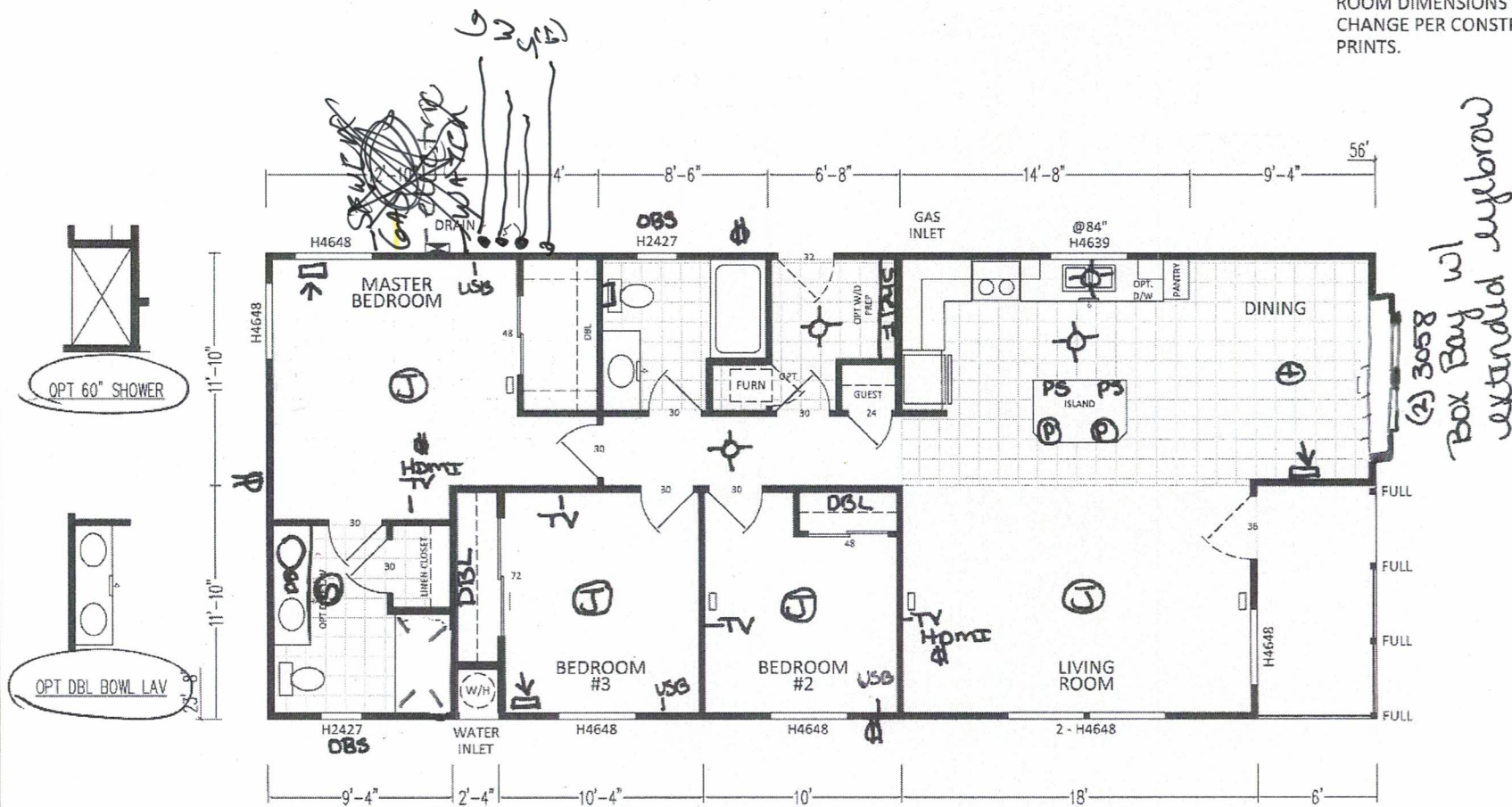


ROOM DIMENSIONS MAY
CHANGE PER CONSTRUCTION
PRINTS.



K619CT 3BD - 2BA 5624 (1254 SQ. FT. LIVING)
(1325 SQ. FT. TOTAL)

30# Roofload
2x6 walls

(2) 3058
Box Bay w/
extended eyebrow

SCALE: 1/8" = 1'-0"

CUSTOMER: --- California #18

SKYLINE	DIVISION 31, P.O. BOX 870 SAN JACINTO, CA 92581 (951) 654-9321	REVISIONS	REVISION DATE:	DRAW DATE: 6-2-17	DRAWING TITLE: SALES FLOOR PLAN 5624-3BD-2BA	MODEL NO. K619CT	MODEL REV. E	SHEET NO. AL-101
			REVISION BY:	DRAWN BY: DCS			DAPIA REV. 2	REF NO.