

**Mouse Anti-CD45 (LCA) [2B11&PD7/26]: MC0316, MC0316RTU7**

**Intended Use:** For Research Use Only

**Description:** CD45, Leucocyte Common Antigen (LCA), is expressed on most nucleated cells of haematopoietic origin and has various isoforms. The anti-CD45 antibody labels CD45 in both normal and neoplastic cells, is a useful tool for identifying tumor cells of lymphoid origin. CD45 is routinely used to aid the differential diagnosis of undifferentiated neoplasms, whenever malignant lymphoma is suspected by the morphologic clinical data. Certain types of lymphoid neoplasms may lack CD45 expression (Hodgkin’s disease, some T-cell lymphomas, some leukemias).

**Specifications:**

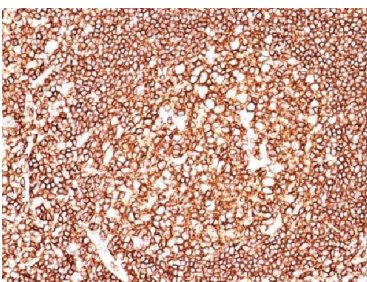
Clone: 2B11&PD7/26  
 Source: Mouse  
 Isotype: IgG1k  
 Reactivity: Human, dog  
 Localization: Membrane  
 Formulation: Purified antibody in PBS pH7.4, containing BSA, and ≤ 0.09% sodium azide (NaN3)  
 Storage: Store at 2°- 8°C  
 Applications: IHC, Flow Cyt., WB  
 Package:

Description	Catalog No.	Size
CD45 (LCA) Concentrated	MC0316	1 ml
CD45 (LCA) Prediluted	MC0316RTU7	7 ml

**IHC Procedure\*:**

Positive Control Tissue: Tonsil, lymphoma  
 Concentrated Dilution: 50-200  
 Pretreatment: Tris EDTA pH9.0, 15 minutes using Pressure Cooker, or 30-60 minutes using water bath at 95°-99°C  
 Incubation Time and Temp: 30-60 minutes @ RT  
 Detection: Refer to the detection system manual

\* Result should be confirmed by an established diagnostic procedure.



FFPE human tonsil stained with anti-CD45 using DAB

**References:**

1. CCL3 production by microglial cells modulates disease severity in murine models of retinal degeneration. Kohno H, et al. J Immunol 192:3816-27, 2014.
2. Preventive and therapeutic effects of Smad7 on radiation-induced oral mucositis. Han G, et al. Nat Med 19:421-8, 2013.
3. Tumor grafts derived from women with breast cancer authentically reflect tumor pathology, growth, metastasis and disease outcomes. DeRose YS, et al. Nat Med 17:1514-20, 2011.

Doc. 100-MC0316  
Rev. A