



58120 KW Condensing steam turbine generator set

TURBINE:

Manufacturer/Type: Mitsubishi type SC1F25AX/10CH-1, single cylinder, axial exhaust, Serial No: 1136
Rated output: 58120 KW
Inlet steam: 1095 psia (1080 PSIG)/933 °F, 478,000 lbs/hr
Inlet steam Maximum: 1450 pssig/965 Deg F
Induction steam: 125 psia (110 psig)/416 °F, 0 to 101,320 lbs/hr
Extraction 1: Blanked
Extraction 3: 340 psia (325 psig), 0 to 112,000 lbs/hr
Extraction 4: 230 psia (215 psig), 0 to 112,000 lbs/hr
Exhaust steam: 1.47"hgA, 404,000 lbs/hr
KW rating at zero extraction and zero induction: 49,460 kw Steam rate 8.17 lbs/kw (turbine coupling)
Speed: 3600 rpm

GENERATOR:

Manufacture/Model: Brush Electrical Machine No.: 01/61710A, frame: BDAX 7-340ERH, TEWAC
Rating: 57778 kva, 0.9 PF, 13800 v, 3 phase, 60 hz, 2417 amps
Exciter: PMG 480 hz, 265 v
Speed: 3600 RPM
Rotation: CCW from exciter end

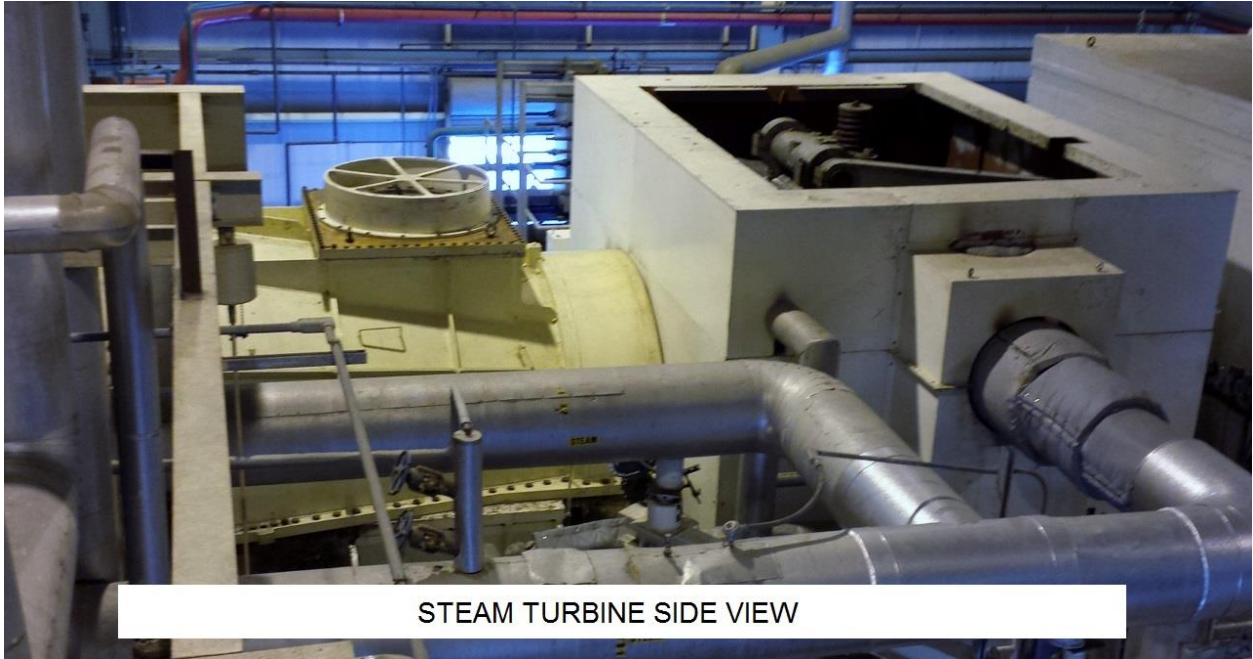
HISTORY:

Unit built 1993 and originally installed as part of combined cycle power plant at Florida, unit dismantled 2015 and stored inside warehouse.

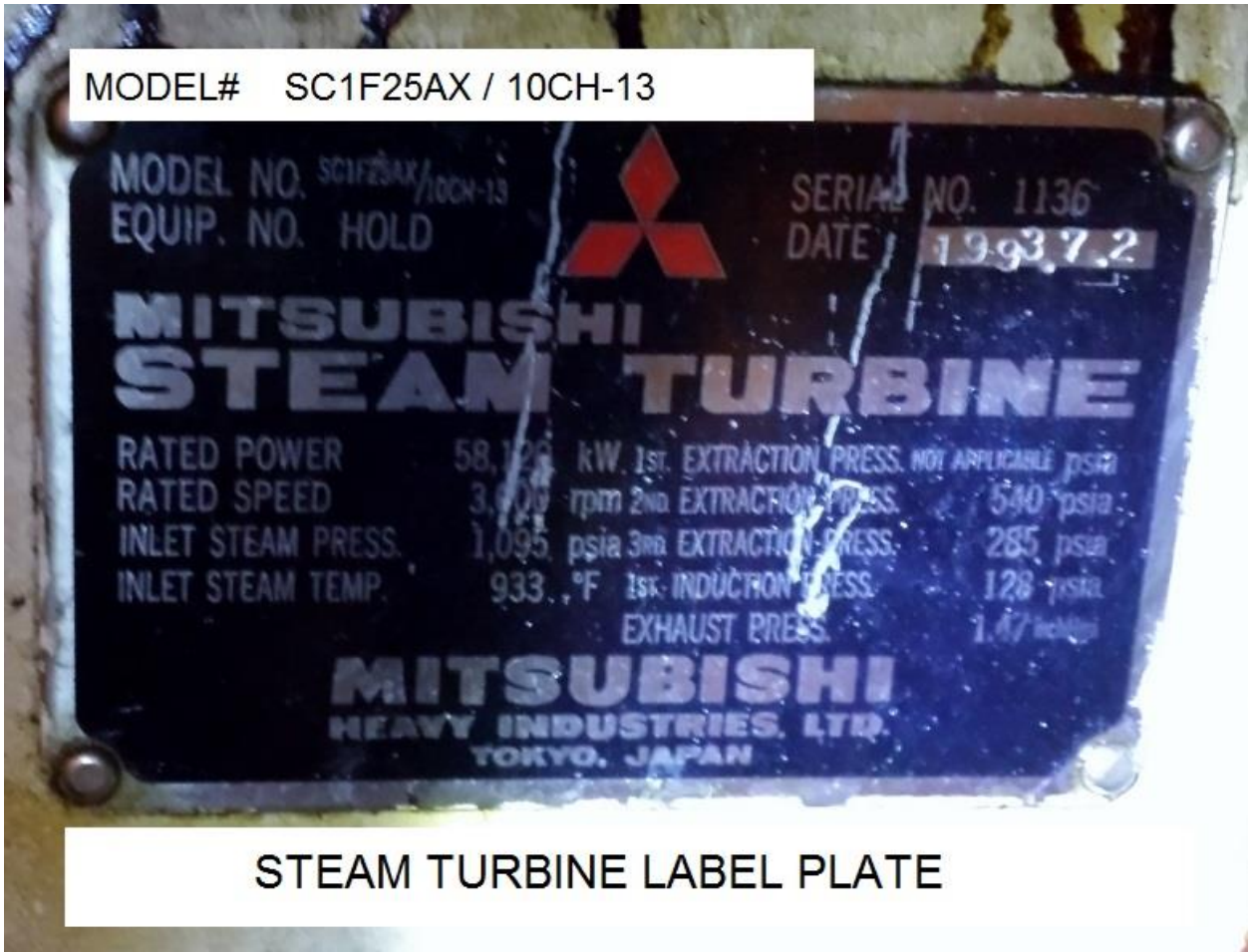
SCOPE OF SUPPLY:

Steam turbine, generator, trip and throttle valve, lube oil system with lube oil tank, lube oil cooler, pumps.
Generator terminal box
Gland steam system
Turbine and generator sole plates
Manuals and drawings





STEAM TURBINE SIDE VIEW



MODEL# SC1F25AX / 10CH-13

MODEL NO. SC1F25AX / 10CH-13
EQUIP. NO. HOLD

SERIAL NO. 1136
DATE 1993.7.2

MITSUBISHI STEAM TURBINE

RATED POWER	58,125 kW	1st. EXTRACTION PRESS. NOT APPLICABLE	psia
RATED SPEED	3,000 rpm	2nd. EXTRACTION PRESS.	540 psia
INLET STEAM PRESS.	1,095 psia	3rd. EXTRACTION PRESS.	285 psia
INLET STEAM TEMP.	933 °F	1st. INDUCTION PRESS.	128 psia
		EXHAUST PRESS.	1.47 inches Hg

MITSUBISHI
HEAVY INDUSTRIES, LTD.
TOKYO, JAPAN

STEAM TURBINE LABEL PLATE



STEAM TURBINE AND GENERATOR ENCLOSURE (LEFT VIEW)

