

BY: SANDS SURVEYING, INC.
 1400 S. 10TH EAST
 BILLINGS, MONTANA 59104
 PH: (406) 735-6488

JOB NO. 84737
 DATE: MARCH 15, 1994
 FOR: BIG MOUNTAIN DEVELOPMENT CORP.
 OWNER: WINTER SPORTS INC.

PLAT OF
SUN RISE RIDGE, Phase III
 A SUBDIVISION
 IN THE SE1/4 SEC. 2, T.31N., R.22W., P.M.M.,
 FLATHEAD COUNTY,
 MONTANA

SCALE: 1" = 50'



- WELL LOCATION ZONE**
- THE WELL LOCATION ZONE SHOWN ON THIS PLAT IS ESTABLISHED TO PROTECT THE QUALITY AND VARIETY OF WATER FROM WHICH IS PROVIDED BY THE STATE OF MONTANA. THE WELL LOCATION ZONE IS ESTABLISHED TO PROTECT THE QUALITY AND VARIETY OF WATER FROM WHICH IS PROVIDED BY THE STATE OF MONTANA. THE WELL LOCATION ZONE IS ESTABLISHED TO PROTECT THE QUALITY AND VARIETY OF WATER FROM WHICH IS PROVIDED BY THE STATE OF MONTANA.
- NO WATER-DEPENDENT SYSTEMS SHALL BE CONSTRUCTED WITHIN THE WELL LOCATION ZONE.
 - NO WELLS SHALL BE DRILLED WITHIN THE WELL LOCATION ZONE.
 - NO ACTIVITY SHALL BE CONDUCTED WHICH COULD PRESENT A THREAT TO THE WELL AND/OR THE QUALITY OF WATER THEREIN.
- PLEASE REFER TO THE APPROPRIATE REGULATIONS OF THE MONTANA DEPARTMENT OF ENVIRONMENT AND NATURAL RESOURCES FOR A COMPLETE LIST OF RESTRICTIONS ON WELLS WITHIN THE WELL LOCATION ZONE.

LEGEND

- CENTER 1/4 CORNER (AS NOTED)
- CORNER (AS NOTED)
- END OF ROAD (AS NOTED)
- END OF PLASTIC CAP (AS NOTED)
- END OF PLASTIC CAP (AS NOTED)
- HOUSE ADDRESS

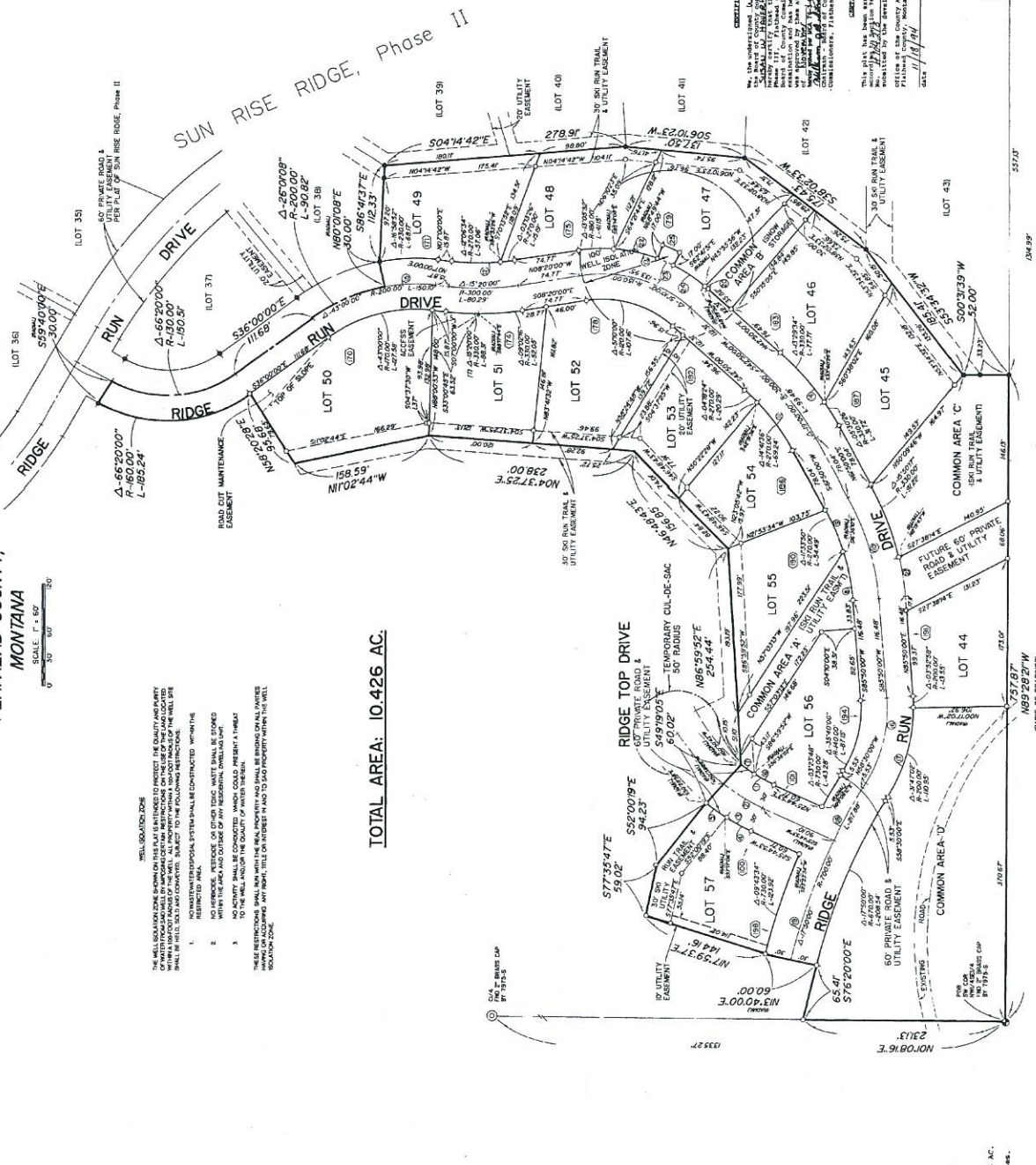
TOTAL AREA: 10,426 AC.

NO.	DELTA	RADIUS	LENGTH
1 (T)	13.24723°	451.161'	0.6899
2 (T)	13.24723°	451.161'	0.6899
3 (T)	13.24723°	451.161'	0.6899
4 (T)	13.24723°	451.161'	0.6899
5 (T)	13.24723°	451.161'	0.6899
6 (T)	13.24723°	451.161'	0.6899
7 (T)	13.24723°	451.161'	0.6899
8 (T)	13.24723°	451.161'	0.6899
9 (T)	13.24723°	451.161'	0.6899
10 (T)	13.24723°	451.161'	0.6899
11 (T)	13.24723°	451.161'	0.6899
12 (T)	13.24723°	451.161'	0.6899
13 (T)	13.24723°	451.161'	0.6899
14 (T)	13.24723°	451.161'	0.6899
15 (T)	13.24723°	451.161'	0.6899
16 (T)	13.24723°	451.161'	0.6899
17 (T)	13.24723°	451.161'	0.6899
18 (T)	13.24723°	451.161'	0.6899
19 (T)	13.24723°	451.161'	0.6899
20 (T)	13.24723°	451.161'	0.6899
21 (T)	13.24723°	451.161'	0.6899
22 (T)	13.24723°	451.161'	0.6899
23 (T)	13.24723°	451.161'	0.6899
24 (T)	13.24723°	451.161'	0.6899
25 (T)	13.24723°	451.161'	0.6899

LOT NO.	AREA (ACRES)	SIZE (ACRES)
44	0.368	0.6899
45	0.419	0.7108
46	0.432	0.7319
47	0.445	0.7529
48	0.458	0.7739
49	0.471	0.7949
50	0.484	0.8159
51	0.497	0.8369
52	0.510	0.8579
53	0.523	0.8789
54	0.536	0.8999
55	0.549	0.9209
56	0.562	0.9419
57	0.575	0.9629
TOTAL (14)	5.920	10,426

ROADS	2,037 AC.
Common Area	0.181 AC.
Common Area	0.117 AC.
Common Area	0.480 AC.
Common Area	1.441 AC.

NOTE: Common Areas Add 1.6115 AC. of 0.506 AC. Total of Roads and Common Areas (0.3219 AC. per lot) for tax purposes.



CERTIFICATE OF SUBDIVISION

WE, THE UNDERSIGNED COUNTY CLERK, DO HEREBY CERTIFY THAT THE ABOVE DESCRIBED PLAT HAS BEEN FILED FOR RECORD IN THE OFFICE OF THE COUNTY CLERK, FLATHEAD COUNTY, MONTANA, AND THAT THE SAME IS CORRECTLY RECORDED IN THE OFFICE OF THE COUNTY CLERK, FLATHEAD COUNTY, MONTANA, AND THAT THE SAME IS CORRECTLY RECORDED IN THE OFFICE OF THE COUNTY CLERK, FLATHEAD COUNTY, MONTANA.

CERTIFICATE OF INTEREST

THE ABOVE DESCRIBED TRACT OF LAND SHALL RESPECTFULLY BE KNOWN AS: SUN RISE RIDGE, PHASE III

CERTIFICATE OF INTEREST

THE PROPERTY SHOWN ON THIS PLAT AND REFERRED TO AS PRIVATE IN ALL CAPS IS THE PROPERTY OF SANDS SURVEYING, INC. THE PROPERTY SHOWN ON THIS PLAT AND REFERRED TO AS COMMON AREAS IN ALL CAPS IS THE PROPERTY OF SANDS SURVEYING, INC. THE PROPERTY SHOWN ON THIS PLAT AND REFERRED TO AS COMMON AREAS IN ALL CAPS IS THE PROPERTY OF SANDS SURVEYING, INC.

STATE DECLARATION

THE STATE LAND SHOWN ON THIS PLAT IS INTENDED TO BE PRIVATE IN ALL CAPS AND THE COMMON AREAS SHOWN ON THIS PLAT ARE INTENDED TO BE COMMON AREAS IN ALL CAPS.

WARRANTY

THE UNDERSIGNED WARRANTS THAT THE PROPERTY SHOWN ON THIS PLAT IS THE PROPERTY OF SANDS SURVEYING, INC. AND THAT THE SAME IS CORRECTLY RECORDED IN THE OFFICE OF THE COUNTY CLERK, FLATHEAD COUNTY, MONTANA.

IN WITNESS WHEREOF

I, Thomas E. Sands, County Clerk, do hereby certify that the above described plat is a true and correct copy of the original filed for record in the office of the County Clerk, Flathead County, Montana, on this 11th day of March, 1994.

CERTIFICATE OF COUNTY COMMISSIONERS

WE, THE COUNTY COMMISSIONERS OF FLATHEAD COUNTY, MONTANA, DO HEREBY CERTIFY THAT THE ABOVE DESCRIBED PLAT IS A TRUE AND CORRECT COPY OF THE ORIGINAL FILED FOR RECORD IN THE OFFICE OF THE COUNTY CLERK, FLATHEAD COUNTY, MONTANA, AND THAT THE SAME IS CORRECTLY RECORDED IN THE OFFICE OF THE COUNTY CLERK, FLATHEAD COUNTY, MONTANA.

CERTIFICATE OF COUNTY ATTORNEY

THE ABOVE DESCRIBED PLAT IS A TRUE AND CORRECT COPY OF THE ORIGINAL FILED FOR RECORD IN THE OFFICE OF THE COUNTY CLERK, FLATHEAD COUNTY, MONTANA, AND THAT THE SAME IS CORRECTLY RECORDED IN THE OFFICE OF THE COUNTY CLERK, FLATHEAD COUNTY, MONTANA.

CERTIFICATE OF COUNTY ATTORNEY

THE ABOVE DESCRIBED PLAT IS A TRUE AND CORRECT COPY OF THE ORIGINAL FILED FOR RECORD IN THE OFFICE OF THE COUNTY CLERK, FLATHEAD COUNTY, MONTANA, AND THAT THE SAME IS CORRECTLY RECORDED IN THE OFFICE OF THE COUNTY CLERK, FLATHEAD COUNTY, MONTANA.

CERTIFICATE OF COUNTY ATTORNEY

THE ABOVE DESCRIBED PLAT IS A TRUE AND CORRECT COPY OF THE ORIGINAL FILED FOR RECORD IN THE OFFICE OF THE COUNTY CLERK, FLATHEAD COUNTY, MONTANA, AND THAT THE SAME IS CORRECTLY RECORDED IN THE OFFICE OF THE COUNTY CLERK, FLATHEAD COUNTY, MONTANA.

CERTIFICATE OF COUNTY ATTORNEY

THE ABOVE DESCRIBED PLAT IS A TRUE AND CORRECT COPY OF THE ORIGINAL FILED FOR RECORD IN THE OFFICE OF THE COUNTY CLERK, FLATHEAD COUNTY, MONTANA, AND THAT THE SAME IS CORRECTLY RECORDED IN THE OFFICE OF THE COUNTY CLERK, FLATHEAD COUNTY, MONTANA.

CERTIFICATE OF COUNTY ATTORNEY

THE ABOVE DESCRIBED PLAT IS A TRUE AND CORRECT COPY OF THE ORIGINAL FILED FOR RECORD IN THE OFFICE OF THE COUNTY CLERK, FLATHEAD COUNTY, MONTANA, AND THAT THE SAME IS CORRECTLY RECORDED IN THE OFFICE OF THE COUNTY CLERK, FLATHEAD COUNTY, MONTANA.

CERTIFICATE OF COUNTY ATTORNEY

THE ABOVE DESCRIBED PLAT IS A TRUE AND CORRECT COPY OF THE ORIGINAL FILED FOR RECORD IN THE OFFICE OF THE COUNTY CLERK, FLATHEAD COUNTY, MONTANA, AND THAT THE SAME IS CORRECTLY RECORDED IN THE OFFICE OF THE COUNTY CLERK, FLATHEAD COUNTY, MONTANA.

CERTIFICATE OF COUNTY ATTORNEY

THE ABOVE DESCRIBED PLAT IS A TRUE AND CORRECT COPY OF THE ORIGINAL FILED FOR RECORD IN THE OFFICE OF THE COUNTY CLERK, FLATHEAD COUNTY, MONTANA, AND THAT THE SAME IS CORRECTLY RECORDED IN THE OFFICE OF THE COUNTY CLERK, FLATHEAD COUNTY, MONTANA.

CERTIFICATE OF COUNTY ATTORNEY

THE ABOVE DESCRIBED PLAT IS A TRUE AND CORRECT COPY OF THE ORIGINAL FILED FOR RECORD IN THE OFFICE OF THE COUNTY CLERK, FLATHEAD COUNTY, MONTANA, AND THAT THE SAME IS CORRECTLY RECORDED IN THE OFFICE OF THE COUNTY CLERK, FLATHEAD COUNTY, MONTANA.

CERTIFICATE OF COUNTY ATTORNEY

THE ABOVE DESCRIBED PLAT IS A TRUE AND CORRECT COPY OF THE ORIGINAL FILED FOR RECORD IN THE OFFICE OF THE COUNTY CLERK, FLATHEAD COUNTY, MONTANA, AND THAT THE SAME IS CORRECTLY RECORDED IN THE OFFICE OF THE COUNTY CLERK, FLATHEAD COUNTY, MONTANA.

CERTIFICATE OF COUNTY ATTORNEY

THE ABOVE DESCRIBED PLAT IS A TRUE AND CORRECT COPY OF THE ORIGINAL FILED FOR RECORD IN THE OFFICE OF THE COUNTY CLERK, FLATHEAD COUNTY, MONTANA, AND THAT THE SAME IS CORRECTLY RECORDED IN THE OFFICE OF THE COUNTY CLERK, FLATHEAD COUNTY, MONTANA.

CERTIFICATE OF COUNTY ATTORNEY

THE ABOVE DESCRIBED PLAT IS A TRUE AND CORRECT COPY OF THE ORIGINAL FILED FOR RECORD IN THE OFFICE OF THE COUNTY CLERK, FLATHEAD COUNTY, MONTANA, AND THAT THE SAME IS CORRECTLY RECORDED IN THE OFFICE OF THE COUNTY CLERK, FLATHEAD COUNTY, MONTANA.

CERTIFICATE OF COUNTY ATTORNEY

THE ABOVE DESCRIBED PLAT IS A TRUE AND CORRECT COPY OF THE ORIGINAL FILED FOR RECORD IN THE OFFICE OF THE COUNTY CLERK, FLATHEAD COUNTY, MONTANA, AND THAT THE SAME IS CORRECTLY RECORDED IN THE OFFICE OF THE COUNTY CLERK, FLATHEAD COUNTY, MONTANA.

CERTIFICATE OF COUNTY ATTORNEY

THE ABOVE DESCRIBED PLAT IS A TRUE AND CORRECT COPY OF THE ORIGINAL FILED FOR RECORD IN THE OFFICE OF THE COUNTY CLERK, FLATHEAD COUNTY, MONTANA, AND THAT THE SAME IS CORRECTLY RECORDED IN THE OFFICE OF THE COUNTY CLERK, FLATHEAD COUNTY, MONTANA.

CERTIFICATE OF COUNTY ATTORNEY

THE ABOVE DESCRIBED PLAT IS A TRUE AND CORRECT COPY OF THE ORIGINAL FILED FOR RECORD IN THE OFFICE OF THE COUNTY CLERK, FLATHEAD COUNTY, MONTANA, AND THAT THE SAME IS CORRECTLY RECORDED IN THE OFFICE OF THE COUNTY CLERK, FLATHEAD COUNTY, MONTANA.