

# DIGITAL UNIFORMS

TO BUILD YOUR UNIFORM GO TO [NIKETEAM.COM](http://NIKETEAM.COM)

## HYPERLITE DISRUPTION JERSEY

SIZES: S, M, L, XL, 2XL  
 \*15% upcharge for 3XL, 4XL, ST, MT, LT, XLT, 2XLT, 3XLT, 4XLT  
 STT, MIT, LTT, XLTT, 2XLT, 3XLT, 4XLT

ORDER DATE: 07/01/16  
 DELIVERY DATE: 07/01/17

Dri-FIT knit game jersey with open holed mesh back panel for enhanced breathability. Vent at hem for increased mobility. Swoosh design trademark at right chest. Authentic jock tag at lower left hem. Body width: 20.75", Body length: 29.75" (size large). Offered in +2" or +4" length options.  
 FABRIC: 100% polyester.

80213	Blank/Sublimation
NAME AND NUMBER (Packaged Price)	
846804	One-Color Lightweight Stretch Twill
846805	Two-Color Lightweight Stretch Twill
846808	Sublimated Lightweight Stretch Twill
NAME ONLY (Individually Priced)	
846810	One-Color Lightweight Stretch Twill
846809	Two-Color Lightweight Stretch Twill
846811	Sublimated Lightweight Stretch Twill

**CALL FOR  
 TEAM  
 PRICING!**



## HYPERLITE DISRUPTION SHORT

SIZES: S, M, L, XL, 2XL  
 \*15% upcharge for 3XL, 4XL, ST, MT, LT, XLT, 2XLT, 3XLT, 4XLT  
 STT, MIT, LTT, XLTT, 2XLT, 3XLT, 4XLT

ORDER DATE: 07/01/16  
 DELIVERY DATE: 07/01/17

Dri-FIT lightweight woven game short with sublimated disruption graphic. Silicone gripper waistband. Bonded mobility vent for increased range of motion. Swoosh design trademark at left hip. Hip width: 22.75", Inseam length: 9.25" (size large). Offered in +2" or +4" length options.  
 FABRIC: 100% polyester.

80214	Blank/Sublimation
848853	One-Color Lightweight Stretch Twill
848856	Two-Color Lightweight Stretch Twill
848857	Sublimated Lightweight Standard Twill

**CALL FOR TEAM  
 PRICING!**



## JERSEY AND SHORTS

ORDER BY	SHIP BY	ORDER BY	SHIP BY	ORDER BY	SHIP BY	ORDER BY	SHIP BY
5/1/2016	7/1/2016	7/1/2016	9/1/2016	9/1/2016	11/1/2016	11/1/2016	1/1/2017
5/15/2016	7/15/2016	7/15/2016	9/15/2016	9/15/2016	11/15/2016	11/15/2016	1/15/2017
6/1/2016	8/1/2016	8/1/2016	11/1/2016	10/1/2016	12/1/2016	12/1/2016	2/1/2017
6/15/2016	8/15/2016	8/15/2016	10/5/2016	10/15/2016	12/15/2016	12/15/2016	2/15/2017

**DIGITAL -  
 BUILD TO SHIP IN 60 DAYS FROM ORDER DEADLINE**

# DIGITAL UNIFORMS

TO BUILD YOUR UNIFORM GO TO [NIKETEAM.COM](http://NIKETEAM.COM)

## 683325 NIKE HYPERELITE EMERGE JERSEY

CALL FOR TEAM PRICING

SIZES: XS, S, M, L, XL, 2XL

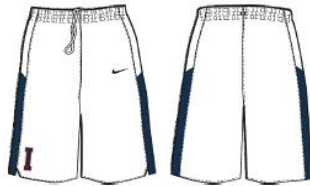
\*15% upcharge for 3XL, 4XL, ST, MT, LT, XLT, 2XLT, 3XLT, 4XLT  
STT, MTT, LTT, XLTT, 2XLTT, 3XLTT, 4XLTT

OFFER DATE: 07/01/16

END DATE: 07/01/18

Fully sublimated basketball jersey delivers zero distractions on the court. Moisture-wicking fabric helps you stay cool, dry and comfortable, while it's slim fit wears close to your body for unrestricted movement. Back features net graphic aeromesh for added ventilation. Nike Team Sports jock tag at lower left hem. Swoosh design trademark on right chest. Body width: 20.75", Body length: 30.5" (size large). Offered in +2" or +4" length options.

FABRIC: 100% polyester.



## 683365 NIKE HYPERELITE EMERGE SHORT

CALL FOR TEAM PRICING

SIZES: XS, S, M, L, XL, 2XL

\*15% upcharge for 3XL, 4XL, ST, MT, LT, XLT, 2XLT, 3XLT, 4XLT  
STT, MTT, LTT, XLTT, 2XLTT, 3XLTT, 4XLTT

OFFER DATE: 07/01/16

END DATE: 07/01/18

Fully sublimated basketball shorts are made with ultra-lightweight moisture-wicking stretch woven fabric. Inseam length hits at the knee optimizing comfort. Vent at hem for added range of motion. Laser perforations for ventilation. Silicone gripper waistband for secure fit. Swoosh design trademark at left hip. Hip width: 24.75", Inseam length: 11.25" (size large). Offered in +2" or +4" length options.

FABRIC: 100% polyester.

### JERSEY AND SHORTS

DIGITAL -  
BUILD TO SHIP IN 45 DAYS FROM ORDER DEADLINE

ORDER BY	SHIP BY	ORDER BY	SHIP BY	ORDER BY	SHIP BY	ORDER BY	SHIP BY
5/1/2016	6/15/2016	7/1/2016	8/15/2016	9/1/2016	10/15/2016	11/1/2016	12/15/2016
5/15/2016	7/1/2016	7/15/2016	9/1/2016	9/15/2016	11/1/2016	11/15/2016	1/1/2017
6/1/2016	7/15/2016	8/1/2016	9/15/2016	10/1/2016	11/15/2016	12/1/2016	1/15/2017
6/15/2016	8/1/2016	8/15/2016	10/1/2016	10/15/2016	12/1/2016	12/15/2016	2/1/2017

# DIGITAL UNIFORMS

TO BUILD YOUR UNIFORM GO TO NIKETEAM.COM

## NIKE ELITE RESPECT JERSEY

SIZES: XS, S, M, L, XL, 2XL  
 \*15% upcharge for 3XL, 4XL, ST, MT, LT, XLT, 2XLT, 3XLT, 4XLT,  
 STT, MTT, LTT, XLTT, 2XLTT, 3XLTT, 4XLTT

OFFER DATE: 07/01/14  
 END DATE: 07/01/17

Fully sublimated moisture-wicking flat back mesh game jersey. Open hole mesh back for light-weight breathability. Contrast color neckband. Contrast color silicone print stripes on side panels. Nike Team Sports jock tag at lower left hem. Swoosh design trademark on upper right chest. Body width: 20.75", Body length: 31.25" (size large). Offered in +2" or +4" length options.

FABRIC: 100% polyester.

619482	Blank/Sublimation
<b>NAME AND NUMBER (Packaged Price)</b>	
946804	One-Color Lightweight Stretch Twill
946805	Two-Color Lightweight Stretch Twill
946806	Sublimated Lightweight Stretch Twill
<b>NAME ONLY (Individually Priced)</b>	
946810	One-Color Lightweight Stretch Twill
946809	Two-Color Lightweight Stretch Twill
946811	Sublimated Lightweight Stretch Twill

**CALL FOR  
 TEAM  
 PRICING!**



## NIKE ELITE RESPECT SHORT

SIZES: XS, S, M, L, XL, 2XL  
 \*15% upcharge for 3XL, 4XL, ST, MT, LT, XLT, 2XLT, 3XLT, 4XLT,  
 STT, MTT, LTT, XLTT, 2XLTT, 3XLTT, 4XLTT

OFFER DATE: 07/01/14  
 END DATE: 07/01/17

Fully sublimated moisture-wicking flat back mesh game short. Gripper waistband. Side panel features two color design detail. Swoosh design trademark at upper left hip. Hip width: 25", Inseam length: 11" (size large). Offered in +2" or +4" length options.

FABRIC: 100% polyester.

619483	Blank/Sublimation
948055	One-Color Lightweight Stretch Twill
948056	Two-Color Lightweight Stretch Twill
948057	Sublimated Lightweight Standard Twill

**CALL FOR TEAM  
 PRICING!**



### JERSEY AND SHORTS

**DIGITAL -  
 BUILD TO SHIP IN 45 DAYS FROM ORDER DEADLINE**

ORDER BY	SHIP BY	ORDER BY	SHIP BY	ORDER BY	SHIP BY	ORDER BY	SHIP BY
5/1/2016	6/15/2016	7/1/2016	8/15/2016	9/1/2016	10/15/2016	11/1/2016	12/15/2016
5/15/2016	7/1/2016	7/15/2016	9/1/2016	9/15/2016	11/1/2016	11/15/2016	1/1/2017
6/1/2016	7/15/2016	8/1/2016	9/15/2016	10/1/2016	11/15/2016	12/1/2016	1/15/2017
6/15/2016	8/1/2016	8/15/2016	10/1/2016	10/15/2016	12/1/2016	12/15/2016	2/1/2017

# DIGITAL UNIFORMS

TO BUILD YOUR UNIFORM GO TO NIKETEAM.COM

## HYPERELITE PLAYMAKER JERSEY

SIZES: XS, S, M, L, XL, 2XL  
 \*15% upcharge for 3XL, 4XL, 5T, MT, LT, XLT, 2XLT, 3XLT, 4XLT  
 STT, MTT, LTT, XLTT, 2XLTT, 3XLTT, 4XLTT

OFFER DATE: 07/01/16  
 END DATE: 01/01/19

Dri-FIT knit game jersey features full engineered aeromesh back panel for lightweight breathability. Contrast shoulder and neckband. Vent at hem for increased mobility. Swoosh design trademark at right chest. Authentic jock tag at lower left hem. Body width: 20.75", Body length: 30.5" (size large). Offered in +2" or +4" length options.  
 FABRIC: 100% polyester.

887382	Blank/Sublimation
<b>NAME AND NUMBER (Packaged Price)</b>	
846804	One-Color Lightweight Stretch Twill
846806	Two-Color Lightweight Stretch Twill
846808	Sublimated Lightweight Stretch Twill
<b>NAME ONLY (Individually Priced)</b>	
846810	One-Color Lightweight Stretch Twill
846809	Two-Color Lightweight Stretch Twill
846811	Sublimated Lightweight Stretch Twill

**CALL FOR TEAM PRICING!**



## HYPERELITE PLAYMAKER SHORT

SIZES: XS, S, M, L, XL, 2XL  
 \*15% upcharge for 3XL, 4XL, 5T, MT, LT, XLT, 2XLT, 3XLT, 4XLT  
 STT, MTT, LTT, XLTT, 2XLTT, 3XLTT, 4XLTT

OFFER DATE: 07/01/16  
 END DATE: 01/01/19

Dri-FIT lightweight woven game short with laser perforations for increased breathability. Silicone gripper waistband. Two color contrast side graphic. Swoosh design trademark at left hip. Hip width: 24.75", Inseam length: 11.25" (size large). Offered in +2" or +4" length options.  
 FABRIC: 100% polyester.

887383	Blank/Sublimation
848855	One-Color Lightweight Stretch Twill
848856	Two-Color Lightweight Stretch Twill
848857	Sublimated Lightweight Standard Twill

**CALL FOR TEAM PRICING!**

**NEW** 201-117 This style has an Oversized Custom Logo Option.

## JERSEY AND SHORTS

ORDER BY	SHIP BY	ORDER BY	SHIP BY	ORDER BY	SHIP BY	ORDER BY	SHIP BY
5/1/2016	7/1/2016	7/1/2016	9/1/2016	9/1/2016	11/1/2016	11/1/2016	1/1/2017
5/15/2016	7/15/2016	7/15/2016	9/15/2016	9/15/2016	11/15/2016	11/15/2016	1/15/2017
6/1/2016	8/1/2016	8/1/2016	11/1/2016	10/1/2016	12/1/2016	12/1/2016	2/1/2017
6/15/2016	8/15/2016	8/15/2016	10/5/2016	10/15/2016	12/15/2016	12/15/2016	2/15/2017

**DIGITAL - BUILD TO SHIP IN 60 DAYS FROM ORDER DEADLINE**

# DIGITAL UNIFORMS

TO BUILD YOUR UNIFORM GO TO NIKETEAM.COM



## NIKE HYPERELITE THROWBACK JERSEY

SIZES: S, M, L, XL, 2XL  
 \*15% upcharge for 3XL, 4XL, ST, MT, LT, XLT, 2XLT, 3XLT, 4XLT  
 STT, MTT, LTT, XLTT, 2XLTT, 3XLTT, 4XLT

OFFER DATE: 07/01/15  
 END DATE: 01/01/18

Retro inspiration meets modern innovation in this fully sublimated basketball jersey, delivering zero distractions on the court. Moisture-wicking fabric helps you stay cool, dry and comfortable. Slim fit wears close to your body for unrestricted movement. Back features open hole mesh for added ventilation. Nike Team Sports jock tag at lower left hem. Swoosh design trademark on right chest. Body width: 20.75", Body length: 30.5" (size large). Offered in +2" or +4" length options.

FABRIC: 100% polyester.

783963	Blank/Sublimation
<b>NAME AND NUMBER (Packaged Price)</b>	
848984	One-Color Lightweight Stretch Twill
848985	Two-Color Lightweight Stretch Twill
848988	Sublimated Lightweight Stretch Twill
<b>NAME ONLY (Individually Priced)</b>	
848910	One-Color Lightweight Stretch Twill
848909	Two-Color Lightweight Stretch Twill
848911	Sublimated Lightweight Stretch Twill

**CALL FOR TEAM PRICING!**



## NIKE HYPERELITE THROWBACK SHORT

SIZES: XS, S, M, L, XL, 2XL  
 \*15% upcharge for 3XL, 4XL, ST, MT, LT, XLT, 2XLT, 3XLT, 4XLT  
 STT, MTT, LTT, XLTT, 2XLTT, 3XLTT, 4XLT

OFFER DATE: 07/01/15  
 END DATE: 01/01/18

Retro inspiration meets modern innovation in these fully sublimated basketball shorts. Ultra-lightweight moisture-wicking stretch woven fabric and inseam that hits at the knee optimizes comfort and mobility. Vent at hem for added range of motion. Laser perforations for ventilation. Silicone gripper waistband for secure fit. Swoosh design trademark at left hip. Hip width: 24.75", Inseam length: 11.25" (size large). Offered in +2" or +4" length options.

FABRIC: 100% polyester.

783966	Blank/Sublimation
848953	One-Color Lightweight Stretch Twill
848956	Two-Color Lightweight Stretch Twill
848957	Sublimated Lightweight Standard Twill

**CALL FOR TEAM PRICING!**



## JERSEY AND SHORTS

ORDER BY	SHIP BY	ORDER BY	SHIP BY	ORDER BY	SHIP BY	ORDER BY	SHIP BY
5/1/2016	7/1/2016	7/1/2016	9/1/2016	9/1/2016	11/1/2016	11/1/2016	1/1/2017
5/15/2016	7/15/2016	7/15/2016	9/15/2016	9/15/2016	11/15/2016	11/15/2016	1/15/2017
6/1/2016	8/1/2016	8/1/2016	11/1/2016	10/1/2016	12/1/2016	12/1/2016	2/1/2017
6/15/2016	8/15/2016	8/15/2016	10/5/2016	10/15/2016	12/15/2016	12/15/2016	2/15/2017

**DIGITAL - BUILD TO SHIP IN 60 DAYS FROM ORDER DEADLINE**

# DIGITAL UNIFORMS

TO BUILD YOUR UNIFORM GO TO [NIKETEAM.COM](http://NIKETEAM.COM)



## NIKE HYPERELITE POWER JERSEY

SIZES: S, M, L, XL, 2XL

\*15% upcharge for 3XL, 4XL, ST, MT, LT, XLT, 2XLT, 3XLT, 4XLT, STT, MTT, LTT, XLTT, 2XLTT, 3XLTT, 4XLTT

OFFER DATE: 07/01/14

END DATE: 01/01/17

Fully sublimated moisture-wicking knit game jersey features engineered aeromesh upper back panel and open hole mesh lower back panel for lightweight breathability. Contrast color detail on side panels. Nike Team Sports jock tag at lower left hem. Swoosh design trademark on upper right chest. Body width: 20.75", Body length: 31.25" (size large). Offered in +2" or +4" length options.

FABRIC: 100% polyester.

618479	Blank/Sublimation
<b>NAME AND NUMBER (Packaged Price)</b>	
846804	One-Color Lightweight Stretch Twill
846805	Two-Color Lightweight Stretch Twill
846808	Sublimated Lightweight Stretch Twill
<b>NAME ONLY (Individually Priced)</b>	
846810	One-Color Lightweight Stretch Twill
846809	Two-Color Lightweight Stretch Twill
846811	Sublimated Lightweight Stretch Twill

**CALL FOR TEAM PRICING!**



## NIKE HYPERELITE POWER SHORT

SIZES: S, M, L, XL, 2XL

\*15% upcharge for 3XL, 4XL, ST, MT, LT, XLT, 2XLT, 3XLT, 4XLT, STT, MTT, LTT, XLTT, 2XLTT, 3XLTT, 4XLTT

OFFER DATE: 07/01/14

END DATE: 01/01/17

Fully sublimated moisture-wicking 2-way stretch twill game short. Silicone gripper waistband. Side panel features two color design detail and laser perforations for lightweight ventilation. Swoosh design trademark at upper left hip. Hip width: 25", Inseam length: 11.25" (size large). Offered in +2" or +4" length options.

FABRIC: 100% polyester.

618488	Blank/Sublimation
846855	One-Color Lightweight Stretch Twill
846856	Two-Color Lightweight Stretch Twill
846857	Sublimated Lightweight Standard Twill

**CALL FOR TEAM PRICING!**



## JERSEY AND SHORTS

ORDER BY	SHIP BY	ORDER BY	SHIP BY	ORDER BY	SHIP BY	ORDER BY	SHIP BY
5/1/2016	7/1/2016	7/1/2016	9/1/2016	9/1/2016	11/1/2016	11/1/2016	1/1/2017
5/15/2016	7/15/2016	7/15/2016	9/15/2016	9/15/2016	11/15/2016	11/15/2016	1/15/2017
6/1/2016	8/1/2016	8/1/2016	11/1/2016	10/1/2016	12/1/2016	12/1/2016	2/1/2017
6/15/2016	8/15/2016	8/15/2016	10/5/2016	10/15/2016	12/15/2016	12/15/2016	2/15/2017

**DIGITAL - BUILD TO SHIP IN 60 DAYS FROM ORDER DEADLINE**

# DIGITAL UNIFORMS

TO BUILD YOUR UNIFORM GO TO [NIKETEAM.COM](http://NIKETEAM.COM)



## ELITE POSTERIZE JERSEY

SIZES: XS, S, M, L, XL, 2XL  
 \*15% upcharge for 3XL, 4XL, ST, MT, LT, XLT, 2XLT, 3XLT, 4XLT  
 STT, MTT, LTT, XLTT, 2XLTT, 3XLTT, 4XLTT

OFFER DATE: 07/01/16  
 END DATE: 01/01/19

Dri-FIT knit game jersey with open holed mesh back panel for enhanced breathability. Contrast neckband and side panel. Vent at hem for increased mobility. Swoosh design trademark at right chest. Authentic jock tag at lower left hem. Body width: 20.75", Body length: 30.5" (size large). Offered in +2" or +4" length options.

FABRIC: 100% polyester.

802304	Blank/Sublimation
<b>NAME AND NUMBER (Packaged Price)</b>	
846804	One-Color Lightweight Stretch Twill
846805	Two-Color Lightweight Stretch Twill
846809	Sublimated Lightweight Stretch Twill
<b>NAME ONLY (Individually Priced)</b>	
846810	One-Color Lightweight Stretch Twill
846809	Two-Color Lightweight Stretch Twill
846811	Sublimated Lightweight Stretch Twill

**CALL FOR TEAM PRICING!**



## ELITE POSTERIZE SHORT

SIZES: XS, S, M, L, XL, 2XL  
 \*15% upcharge for 3XL, 4XL, ST, MT, LT, XLT, 2XLT, 3XLT, 4XLT  
 STT, MTT, LTT, XLTT, 2XLTT, 3XLTT, 4XLTT

OFFER DATE: 07/01/16  
 END DATE: 01/01/19

Dri-FIT knit game short with closed holed mesh for enhanced breathability. Silicone gripper waistband. Contrast side panel. Swoosh design trademark at left hip. Hip width: 24.75", Inseam length: 11.25" (size large). Offered in +2" or +4" length options.

FABRIC: 100% polyester.

802305	Blank/Sublimation
846805	One-Color Lightweight Stretch Twill
846806	Two-Color Lightweight Stretch Twill
846807	Sublimated Lightweight Standard Twill

**CALL FOR TEAM PRICING!**



## JERSEY AND SHORTS

ORDER BY	SHIP BY	ORDER BY	SHIP BY	ORDER BY	SHIP BY	ORDER BY	SHIP BY
5/1/2016	7/1/2016	7/1/2016	9/1/2016	9/1/2016	11/1/2016	11/1/2016	1/1/2017
5/15/2016	7/15/2016	7/15/2016	9/15/2016	9/15/2016	11/15/2016	11/15/2016	1/15/2017
6/1/2016	8/1/2016	8/1/2016	11/1/2016	10/1/2016	12/1/2016	12/1/2016	2/1/2017
6/15/2016	8/15/2016	8/15/2016	10/5/2016	10/15/2016	12/15/2016	12/15/2016	2/15/2017

**DIGITAL - BUILD TO SHIP IN 60 DAYS FROM ORDER DEADLINE**

# DIGITAL UNIFORMS

TO BUILD YOUR UNIFORM GO TO [NIKETEAM.COM](http://NIKETEAM.COM)



## NIKE ELITE CROSSOVER JERSEY

SIZES: XS, S, M, L, XL, 2XL  
 \*15% upcharge for 3XL, 4XL, ST, MT, LT, XLT, 2XLT, 3XLT, 4XLT  
 STT, MTT, LTT, XLTT, 2XLTT, 3XLTT, 4XLTT

OFFER DATE: 07/01/15  
 END DATE: 01/01/18

Fully sublimated basketball jersey delivers zero distractions on the court. Moisture-wicking fabric helps you stay cool, dry and comfortable, while its slim fit wears close to your body for unrestricted movement. Back features open hole mesh for added ventilation. Nike Team Sports jock tag at lower left hem. Swoosh design trademark on right chest. Body width: 20.75", Body length: 30.5" (size large). Offered in +2" or +4" length options.

FABRIC: 100% polyester.

NAME AND NUMBER (Packaged Price)
046804 One-Color Lightweight Stretch Twill
046805 Two-Color Lightweight Stretch Twill
046809 Sublimated Lightweight Stretch Twill
NAME ONLY (Individually Priced)
046810 One-Color Lightweight Stretch Twill
046809 Two-Color Lightweight Stretch Twill
046811 Sublimated Lightweight Stretch Twill

**CALL FOR TEAM PRICING!**



## NIKE ELITE CROSSOVER SHORT

SIZES: XS, S, M, L, XL, 2XL  
 \*15% upcharge for 3XL, 4XL, ST, MT, LT, XLT, 2XLT, 3XLT, 4XLT  
 STT, MTT, LTT, XLTT, 2XLTT, 3XLTT, 4XLTT

OFFER DATE: 07/01/15  
 END DATE: 01/01/18

Fully sublimated basketball shorts are made with stretchable, lightweight moisture-wicking mesh fabric. Inseam hits at the knee, optimizing comfort and mobility on the court. Exposed elastic waistband with drawcord for a customizable fit. Swoosh design trademark at left hip. Hip width: 24.75", Inseam length: 11.25" (size large). Offered in +2" or +4" length options.

FABRIC: 100% polyester.

048055 One-Color Lightweight Stretch Twill
048056 Two-Color Lightweight Stretch Twill
048057 Sublimated Lightweight Standard Twill

**CALL FOR TEAM PRICING!**



## JERSEY AND SHORTS

ORDER BY	SHIP BY	ORDER BY	SHIP BY	ORDER BY	SHIP BY	ORDER BY	SHIP BY
5/1/2016	7/1/2016	7/1/2016	9/1/2016	9/1/2016	11/1/2016	11/1/2016	1/1/2017
5/15/2016	7/15/2016	7/15/2016	9/15/2016	9/15/2016	11/15/2016	11/15/2016	1/15/2017
6/1/2016	8/1/2016	8/1/2016	11/1/2016	10/1/2016	12/1/2016	12/1/2016	2/1/2017
6/15/2016	8/15/2016	8/15/2016	10/5/2016	10/15/2016	12/15/2016	12/15/2016	2/15/2017

**DIGITAL - BUILD TO SHIP IN 60 DAYS FROM ORDER DEADLINE**



# DIGITAL UNIFORMS

TO BUILD YOUR UNIFORM GO TO [NIKETEAM.COM](http://NIKETEAM.COM)



## NIKE ELITE COUNTDOWN JERSEY

SIZES: XS, S, M, L, XL, 2XL  
 \*15% upcharge for 3XL, ST, MT, LT, XLT, 2XLT, 3XLT, 4XLT,  
 STT, MTT, LTT, XLTT, 2XLTT, 3XLTT, 4XLTT

OFFER DATE: 07/01/14  
 END DATE: 01/01/17

Fully sublimated moisture-wicking knit jersey. Open hole mesh back for lightweight breathability. Contrast color neckband. Contrast color detail on side panels. Nike Team Sports jock tag at lower left hem. Swoosh design trademark on upper right chest. Body width: 20.75", Body length: 31.25" (size large). Offered in +2" or +4" length options.

FABRIC: 100% polyester.

618477	Blank/Sublimation
NAME AND NUMBER (Packaged Price)	
846804	One-Color Lightweight Stretch Twill
846805	Two-Color Lightweight Stretch Twill
846808	Sublimated Lightweight Stretch Twill
NAME ONLY (Individually Priced)	
846810	One-Color Lightweight Stretch Twill
846809	Two-Color Lightweight Stretch Twill
846811	Sublimated Lightweight Stretch Twill

CALL FOR TEAM PRICING!



## NIKE ELITE COUNTDOWN SHORT

SIZES: XS, S, M, L, XL, 2XL  
 \*15% upcharge for 3XL, ST, MT, LT, XLT, 2XLT, 3XLT, 4XLT,  
 STT, MTT, LTT, XLTT, 2XLTT, 3XLTT, 4XLTT

OFFER DATE: 07/01/14  
 END DATE: 01/01/17

Fully sublimated moisture-wicking knit game short. Gripper waistband. Side panel features variegated design detail. Swoosh design trademark at upper left hip. Hip width: 25", Inseam length: 11.25" (size large). Offered in +2" or +4" length options.

FABRIC: 100% polyester.

618478	Blank/Sublimation
848055	One-Color Lightweight Stretch Twill
848056	Two-Color Lightweight Stretch Twill
848057	Sublimated Lightweight Standard Twill

CALL FOR TEAM PRICING!



## JERSEY AND SHORTS

ORDER BY	SHIP BY	ORDER BY	SHIP BY	ORDER BY	SHIP BY	ORDER BY	SHIP BY
5/1/2016	7/1/2016	7/1/2016	9/1/2016	9/1/2016	11/1/2016	11/1/2016	1/1/2017
5/15/2016	7/15/2016	7/15/2016	9/15/2016	9/15/2016	11/15/2016	11/15/2016	1/15/2017
6/1/2016	8/1/2016	8/1/2016	11/1/2016	10/1/2016	12/1/2016	12/1/2016	2/1/2017
6/15/2016	8/15/2016	8/15/2016	10/5/2016	10/15/2016	12/15/2016	12/15/2016	2/15/2017

DIGITAL -  
 BUILD TO SHIP IN 60 DAYS FROM ORDER DEADLINE

# DIGITAL UNIFORMS

TO BUILD YOUR UNIFORM GO TO NIKETEAM.COM



## NIKE PINNACLE MESH REVERSIBLE TANK

SIZES: XS, S, M, L, XL, 2XL  
 \*15% upcharge for 3XL, 4XL, ST, MT, LT, XLT, 2XLT, 3XLT, 4XLT  
 OFFER DATE: 07/01/15  
 END DATE: 01/01/18

Fully sublimated basketball reversible tank is made with moisture-wicking mesh to keep you dry and cool during practice. Single layer double sided mesh fabric reduces bulk compared to traditional two layer reversible. Nike Team Sports jock tag at lower left hem. Swoosh design trademark and basketball wordmark at front chest. Body width: 22.75", Body length: 29" (size large). Offered in +2" or +4" length options.

FABRIC: 100% polyester.

683212	Blank/Sublimation
<b>NAME AND NUMBER (Packaged Price)</b>	
946804	One-Color Lightweight Stretch Twill
946805	Two-Color Lightweight Stretch Twill
946806	Sublimated Lightweight Stretch Twill
<b>NAME ONLY (Individually Priced)</b>	
946810	One-Color Lightweight Stretch Twill
946809	Two-Color Lightweight Stretch Twill
946811	Sublimated Lightweight Stretch Twill

**CALL FOR TEAM PRICING!**

## NIKE PINNACLE MESH SHORT

SIZES: XS, S, M, L, XL, 2XL  
 \*15% upcharge for 3XL, 4XL, ST, MT, LT, XLT, 2XLT, 3XLT, 4XLT  
 OFFER DATE: 07/01/15  
 END DATE: 01/01/18

Fully sublimated basketball shorts are made with moisture-wicking mesh for breathability. Inseam length hits at the knee, providing comfort and mobility on the court. Exposed elastic waistband with drawcord for a customizable fit. Side panels feature Elite Stripe design trademark. Swoosh design trademark at left side panel hem. Hip width: 24.75", Inseam length: 11.25" (size large). Offered in +2" or +4" length options.

FABRIC: 100% polyester.

683212	Blank/Sublimation
946805	One-Color Lightweight Stretch Twill
946806	Two-Color Lightweight Stretch Twill
946807	Sublimated Lightweight Standard Twill

**CALL FOR TEAM PRICING!**

## JERSEY AND SHORTS

ORDER BY	SHIP BY	ORDER BY	SHIP BY	ORDER BY	SHIP BY	ORDER BY	SHIP BY
5/1/2016	7/1/2016	7/1/2016	9/1/2016	9/1/2016	11/1/2016	11/1/2016	1/1/2017
5/15/2016	7/15/2016	7/15/2016	9/15/2016	9/15/2016	11/15/2016	11/15/2016	1/15/2017
6/1/2016	8/1/2016	8/1/2016	11/1/2016	10/1/2016	12/1/2016	12/1/2016	2/1/2017
6/15/2016	8/15/2016	8/15/2016	10/5/2016	10/15/2016	12/15/2016	12/15/2016	2/15/2017

**DIGITAL - BUILD TO SHIP IN 60 DAYS FROM ORDER DEADLINE**

# DIGITAL UNIFORMS

TO BUILD YOUR UNIFORM GO TO [NIKETEAM.COM](http://NIKETEAM.COM)



## JORDAN FLIGHT TEAM JERSEY

SIZES: XS, S, M, L, XL, 2XL

\*15% upcharge for 3XL, 4XL, ST, MT, LT, XLT, 2XLT, 3XLT, 4XLT  
STT, MTT, LTT, XLT, 2XLT, 3XLT, 4XLT

OFFER DATE: 07/01/15  
END DATE: 01/01/18

Moisture-wicking 160G 100% polyester game jersey with sublimated graphics. Extremely lightweight game jersey with mesh back provides zero distraction through mobility, moisture management and breathability when the game heats up. Body width: 20.75", Body length: 30.5" (size large). Offered in +2" or +4" length options.

FABRIC: 100% polyester.

896733	Blank/Sublimation
NAME AND NUMBER (Packaged Price)	
848884	One-Color Lightweight Stretch Twill
848885	Two-Color Lightweight Stretch Twill
848888	Sublimated Lightweight Stretch Twill
NAME ONLY (Individually Priced)	
848818	One-Color Lightweight Stretch Twill
848889	Two-Color Lightweight Stretch Twill
848811	Sublimated Lightweight Stretch Twill

**CALL FOR TEAM PRICING!**

## JORDAN FLIGHT TEAM SHORT

SIZES: XS, S, M, L, XL, 2XL

\*15% upcharge for 3XL, 4XL, ST, MT, LT, XLT, 2XLT, 3XLT, 4XLT  
STT, MTT, LTT, XLT, 2XLT, 3XLT, 4XLT

OFFER DATE: 07/01/15  
END DATE: 01/01/18

Moisture-wicking 120G 100% polyester game short with sublimated graphics. Extremely lightweight game short with mesh gusset and gripper waistband provides zero distraction through a secure fit, mobility, moisture management and breathability when the game heats up. Hip width: 24.75", Inseam length: 11.25" (size large). Offered in +2" or +4" length options.

FABRIC: 100% polyester.

896737	Blank/Sublimation
848853	One-Color Lightweight Stretch Twill
848856	Two-Color Lightweight Stretch Twill
848857	Sublimated Lightweight Standard Twill

**CALL FOR TEAM PRICING!**

## JERSEY AND SHORTS

ORDER BY	SHIP BY	ORDER BY	SHIP BY	ORDER BY	SHIP BY	ORDER BY	SHIP BY
5/1/2016	7/1/2016	7/1/2016	9/1/2016	9/1/2016	11/1/2016	11/1/2016	1/1/2017
5/15/2016	7/15/2016	7/15/2016	9/15/2016	9/15/2016	11/15/2016	11/15/2016	1/15/2017
6/1/2016	8/1/2016	8/1/2016	11/1/2016	10/1/2016	12/1/2016	12/1/2016	2/1/2017
6/15/2016	8/15/2016	8/15/2016	10/5/2016	10/15/2016	12/15/2016	12/15/2016	2/15/2017

**DIGITAL - BUILD TO SHIP IN 60 DAYS FROM ORDER DEADLINE**