

High Performance Entrance Door



Meridian

The Doorway to a Greener Future





meridian

A Rated
Energy Performance

Secured
By Design
Compliant

50mm
Triple Glazing
As Standard

19% More Thermally
Efficient

59% Thicker Than a
Standard Door



WOODLAND
TRUST

*Meridian doors are
working in conjunction with
the Woodland Trust to preserve
and protect the UK's woodland*

meridian



Page
18



Page
34



Page
8



Page
26

Contents

<i>Introduction</i>	5	<i>The Elm Range</i>	20
<i>Meridian Door Styles</i>	6	<i>The Oak Solid Range</i>	22
<i>Security</i>	8	<i>The Alder Range</i>	24
<i>Energy Performance</i>	9	<i>The Ash Range</i>	26
<i>Personalise Your Door</i>	10	<i>The Teak Range</i>	28
<i>Colour Options</i>	12	<i>The Cedar Range</i>	30
<i>Glazing Options</i>	14	<i>The Willow Range</i>	32
<i>Hardware Options</i>	16	<i>The Maple Range</i>	34
<i>The Birch Range</i>	18	<i>Maintenance & Operation</i>	37

High Performance Entrance Door



Meridian

The Doorway to a Greener Future

The Meridian door range is proud to support the Woodland Trust. The Woodland Trust care for our woods and create vital places for people and wildlife to enjoy.

The Meridian door is specifically designed to promote environmental benefits without compromising our natural environment.

Our high performance doors are manufactured to ensure you enjoy not only thermal benefits that will help reduce your energy bills but also use the latest in modern materials to ensure we preserve our natural woodlands.

We are also committed to the ongoing support of the Meridian Wood, Bluntisham through the Woodland Trust... proving this is a doorway to a greener future.



WOODLAND
TRUST

Meridian doors are working in conjunction with the Woodland Trust to preserve and protect the UK's woodland

meridian

Door Styles



Birch 1

Elm 2

Oak Solid 3

Alder 4

Asb 5

Teak 6

Cedar 7

Willow 8

Maple 9





Meridian

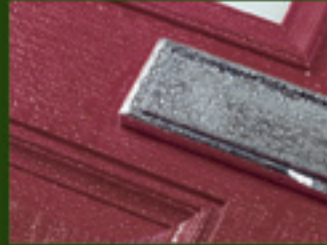
The Doorway to a Greener Future

Your entrance door is the first feature people notice about your home. It reflects your home's personality, your lifestyle and aspirations. The Meridian range of doors not only provides you with a comprehensive choice of 9 styles, in various glass and colour choices, but also provides you with high security and energy performance, giving you the bespoke style and choice with leading edge performance.

Today's composite doors are the perfect stylish, secure and low-maintenance choice; combining superb aesthetics with unrivalled, long-life performance. With superior weather-tightness, secure locking systems and greater thermal efficiency, your home is fully protected with a modern entrance door.

How's that for peace of mind?

Whichever door you select, you can be assured that your door has been made to the highest quality standards. Whether your requirements are for a door with a large glass area to bring light in to your home, or a door with little or no glass to maintain the privacy in your home, you will find a design to suit in our extensive composite door range.



5



6



7



8



9

Security

Safety and security are uppermost in everyone's mind. 67% of burglars break in through the door, according to Home Office official crime statistics. That's why our Meridian composite doors use only the best quality multi-point locking systems to keep your home and family fully protected.



Safe and Secure

*Feel reassured with a Meridian composite door, which is manufactured in accordance with **Secured by Design**, a Police-backed accreditation. Secured by Design is the official UK police approval for security products that ensures they are designed, manufactured and tested within strict rigid guidelines.*

Meridian SBD-licensed doors are available as either solid or glazed versions, giving your home the ultimate protection from unwanted intrusion.*



70mm Rebated Triple Seal Design

The Meridian door is designed to improve security and performance. Our rebated design not only provides an additional weatherseal strip to enhance thermal and weathering performance, it also improves security too.

All doors are manufactured using a 70mm composite slab/leaf instead of the traditional 44mm, enabling a triple sealing system and triple glazing on all doors.

** Please check availability and additional costs with your installer for SBD certification*

67%

of burglars break in through the door



59% thicker than a standard 44mm door

Energy Performance



A Meridian GRP composite door is more energy efficient than a traditional timber door or a solid timber core composite door – fact!

These days, we all worry about how much energy our homes use. The rising cost of our energy bills and our impact on the environment mean we want to keep our consumption to a minimum. One of the best ways to do this is to choose thermally efficient products that keep warmth in and cold out, saving money and emissions.

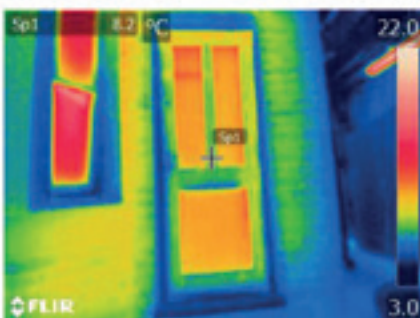
When it comes to thermally efficient doors, a Meridian GRP composite door is the best choice you can make.

19%

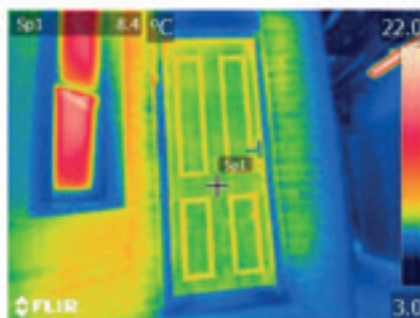
more thermally efficient
than a 48mm solid timber
core composite door

The photos below show the thermal efficiency of each of the doors we tested. The darker the blue, the less heat is being lost. Reds and greens – the predominant colours on the timber door – indicate high heat loss.

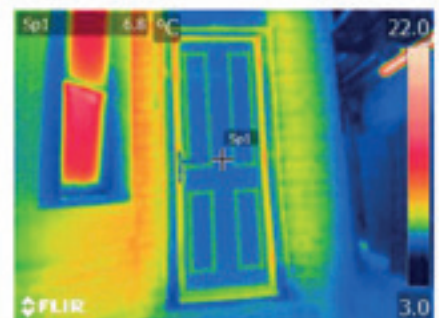
17% more thermally efficient
than a 44mm traditional
timber panelled door



Traditional timber panelled door



Solid timber core composite door



Distinction GRP composite door

Personalise Your Door

Your door is as individual as you are. We manufacture every composite door to the customer's exact and bespoke requirements.

Personalise your door from our vast range of options that add a unique finishing touch.

Starting with your door style from our comprehensive range – glazed or solid, it's up to you.

Next, you need to choose what type and style of glazing panel you require. Within our myriad glass designs and styles, there are many choices to suit your location and lifestyle.

Then choose your colour, there are eleven standard finishes including the ability to have a bespoke finish to suit your exact needs.

Finally, select your hardware from our attractive ranges of standard or perfectly-matching door furniture in gold, white, black and chrome.

Range Options Fold Out User Guide



Turn to the product page of the door that you have chosen. Unfold the range option fold at the back of the brochure.



1st choose your glass and colour options from the double page spread.



Finally, fold inwards the hardware options tab.

Step 1

Decide on your door style. Twin glazed, single or solid, you can choose from our extensive ranges featured in the following pages.



Step 2

Select your glass. So many designs to select from, just refer to the pages relating to your door style for details.



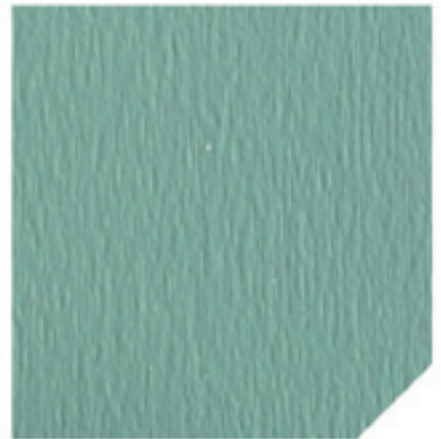
Step 3

Choose a colour to suit your property or personal taste, there are great colours to choose from or you can request a bespoke colour.



Step 4

Choose a frame colour to suit your door. You can have it in white or matching the colour of your door.



Step 5

Finally no door is complete without the door furniture, we have a wide range of knockers, letterplates and handles to enhance your chosen door.



Finished Door

Colour Options

Whether you are looking to complement your home with a heritage colour or a bright solid colour, we have a range of finishes to bring out the best in your door.

Choose from our competitive range of colours to compliment your glass designs and hardware colours. All doors can be supplied with the outer frame in white or matching the colour of your door - you decide what suits your home the best.

Bespoke Colour Selector

In addition to our colour range, you can have virtually any colour entrance door. Simply provide your colour choice and RAL reference code and we do the rest.



Black 9017



Anthracite Grey 7016



Mid Grey 7001



Blue 5003



*Duck Egg
Blue 5024*



*Chartwell
Green*



*Véry
Berry*



Red 3011



White 9016



Cream 9001



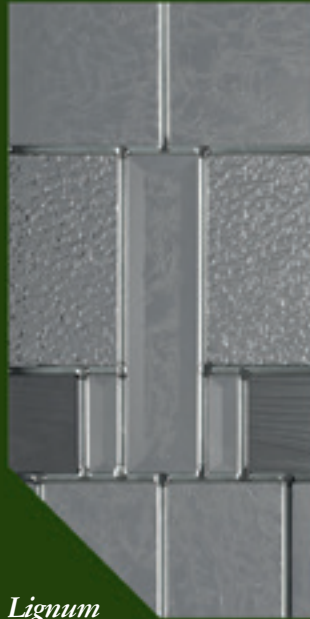
*French
Grey 7032*

Glazing Options

Glass panels not only allow light into your home, they enhance and personalise your door according to your taste. A range of hand-crafted exclusive and stylish glazing designs are produced by our specialist team.

A range of traditional and contemporary glass designs are available for each door style.

Alternatively a range of 3 obscure and a clear design are also available, all in 50mm triple glazing as standard.



Lignum



Mesquite



Karri



Jarrab



Peroba



*Obscure
Stippolyte*



*Obscure
Minster*



*Obscure
Satin*



All Glass Units are
50mm
Triple Glazed
as Standard

37%

More Thermally
Efficient than a
Double Glazed Unit

Hardware Options

All of our hardware is available in 4 high quality finishes designed to compliment your home.

Furthermore, all our hardware finishes come with a 10 year guarantee to give you total peace of mind.

Suited Colour Options



White



Black



Gold



Chrome

Alternative Colour Options

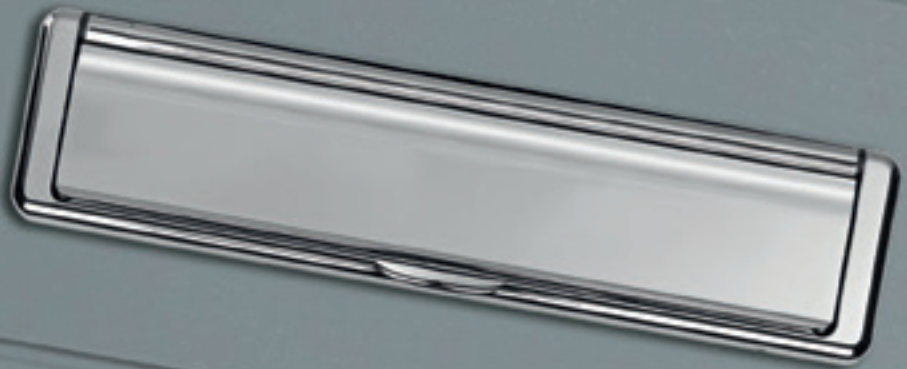


*Bronze**



*Satin**

** Not available in Berwick High Security Plus Door Handle*



Balmoral Plus door handle (lever/pad)**



- *Sculptured ergonomic handle with low friction operation.*
- *Colour co-ordinated screw fixing beads.*

*** Standard handle, supplied with all doors*

Balmoral Plus door handle (lever/lever)



- *Sculptured ergonomic handle with low friction operation.*
- *Colour co-ordinated screw fixing beads.*



Slim Urn Plus Knocker (Spyhole Optional)



- *Traditional design to suit any door style and finish.*

Horsetail Plus Knocker



- *Classic design to complement your chosen door style.*

Berwick High Security Plus door handle (lever/lever)



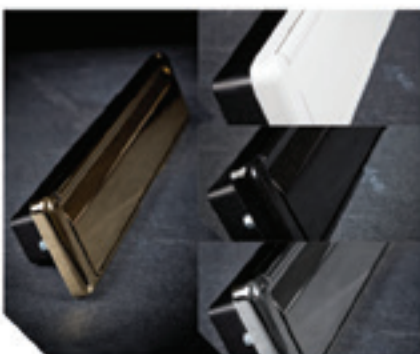
- *Sculptured ergonomic handle with low friction operation.*
- *Colour co-ordinated screw fixing heads.*

Contemporary Plus Knocker



- *Slim and simple design to complement your chosen door style.*

Nu Mail Plus Letterplate



- *Anti-snap flap opens to 180° for ease of operation and no broken flaps.*
- *Fully weathersealed for high performance.*

SFS Hinge



- *Contemporary design with subtle sightlines.*
- *Hinges available in white only to suit internal finish of door.*

Suitable for both traditional and modern tastes, the Birch is our top selling design. Its twin glazed panels accept a variety of glass options to your liking. This versatile door style echoes Georgian and Edwardian architectural styles, making it the perfect choice for traditional properties.



Birch



1



2



3



4



5

- 1 Birch Chartwell Green - Lignum
- 2 Birch Black - Mesquite
- 3 Birch Mid Grey - Karri
- 4 Birch Very Berry - Jarrab
- 5 Birch Duck Egg Blue - Peroba



Birch

Personalise Your Door - with our easy-to-use fold out range options.

- Choose a door and frame colour to suit your property or personal taste.
- Select your glass.
- Finally no door is complete without the door furniture.

meridian

The 70mm
Composite Door
Range

The Doorway to a
Greener Future

Meridian doors are
working in partnership
with the Woodland Trust
to promote and
protect the
UK's treasured
WOODLAND

Elm





Elm

meridian

This traditional 'cottage-style' door is a favourite with homeowners, suitable for either front or back doors. The Elm's vertical 'boarded' appearance replicates the rustic 'tongue and groove' timber construction, which makes them ideal for restoration or replacement projects.



- 1 Elm Anthracite Grey - Mesquite
- 2 Elm Mid Grey - Karri
- 3 Elm Blue - Jarrab
- 4 Elm Duck Egg Blue - Mesquite
- 5 Elm French Grey - Lignum



Elm

Personalise Your Door - with our easy-to-use fold out range options.

- Choose a door and frame colour to suit your property or personal taste.
- Select your glass.
- Finally no door is complete without the door furniture.

meridian

The 70mm
Composite Door
Range

The Doorway to a
Greener Future

Meridian doors are working in conjunction with the Woodland Trust to preserve and protect the UK's woodland.

Oak Solid



Oak Solid

meridian

The Oak Solid range offers you total privacy whether it be a busy street or a quaint cottage. The traditional solid oak style suits any home.

- 1 Oak Solid Black
- 2 Oak Solid Red
- 3 Oak Solid Chartwell Green
- 4 Oak Solid Cream
- 5 Oak Solid Anthracite Grey



Oak Solid

- Personalise Your Door - with our easy-to-use fold out range options.*
- Choose a door and frame colour to suit your property or personal taste.
 - Select your glass.
 - Finally no door is complete without the door furniture.

meridian

The 70mm
Composite Door
Range

The Doorway to a
Greener Future

Meridian doors are
working in conjunction
with the Woodland Trust
to promote and
protect the
UK's woodland. www.woodlandtrust.org.uk

Alder



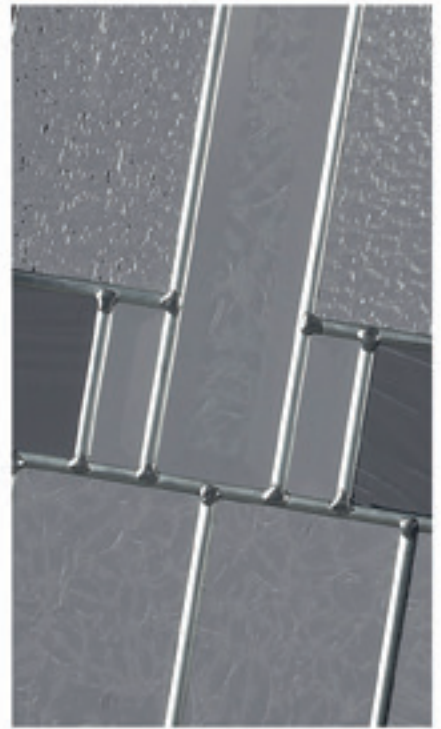
1



2

1 Alder 2 Mid Grey -
Lignum

2 Alder 4 Very Berry -
Mesquite



Alder

The Alder range offers two classic styles to personalise the door. Two or Four panels bring more light, with a choice of attractive traditional or contemporary glass designs.

3 Alder 4 Anthracite Grey - Karri

4 Alder 2 Blue - Jarrab

5 Alder 2 Red - Mesquire

6 Alder 2 White - Karri



Alder

- Personalise Your Door - with our easy-to-use fold out range options.*
- Choose a door and frame colour to suit your property or personal taste.
 - Select your glass.
 - Finally no door is complete without the door furniture.

meridian

The 70mm Composite Door Range

The Doorway to a Greener Future

Meridian doors are working in partnership with the Woodland Trust to preserve and protect the UK's woodland.

Ash



For privacy with some light, choose the Ash semi-circular single top glazed panel is ideal for a busy location.

- 1 Ash Red - Lignum
- 2 Ash Cream - Mesquite
- 3 Ash Blue - Karri
- 4 Ash Duck Egg Blue - Jarrab
- 5 Ash Black - Lignum



Ash

Personalise Your Door - with our easy-to-use fold out range options.

- Choose a door and frame colour to suit your property or personal taste.
- Select your glass.
- Finally no door is complete without the door furniture.

meridian

The 70mm
Composite Door
Range

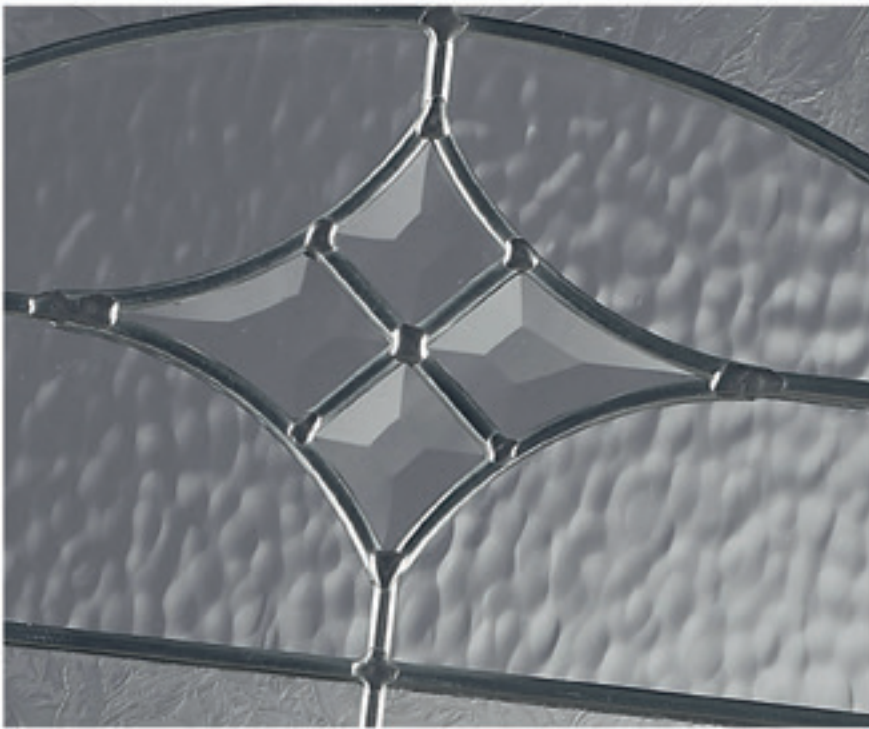
The Doorway to a
Greener Future

Meridian doors are
manufactured in conjunction
with the Wood and Timber
to preserve and
protect the
UK's woodland



Teak





- 1 - Teak Blue - Lignum
- 2 - Teak Anthracite Grey - Jarrah
- 3 - Teak Duck Egg Blue - Mesquite
- 4 - Teak White - Karri

Teak

The Teak range offers more light into your home than the Ash range with three glass panels.



Teak

- Personalise Your Door - with our easy-to-use fold out range options.
- Choose a door and frame colour to suit your property or personal taste.
 - Select your glass.
 - Finally no door is complete without the door furniture.

meridian

The 70mm
Composite Door
Range

The Doorway to a
Greener Future

Meridian doors are
working in conjunction
with the Woodland Trust
to preserve and
protect the
UK's woodland



Cedar



1





Cedar

Fresh, clean and thoroughly contemporary, the Cedar expands our European theme. Two offset glazed panels illuminate the interior, while affording a degree of privacy.

- 1 Cedar Chartwell Green - Karri
- 2 Cedar Red - Jarrah
- 3 Cedar Very Berry - Lignum
- 4 Cedar Blue - Mesquite
- 5 Cedar Mid Grey - Karri



Cedar

- Personalise Your Door - with our easy-to-use fold out range options.*
- Choose a door and frame colour to suit your property or personal taste.
 - Select your glass.
 - Finally no door is complete without the door furniture.

meridian

The 70mm
Composite Door
Range

The Doorway to a
Greener Future

Meridian doors are working in conjunction with the Woodland Trust to preserve and protect the UK's woodland.

Willow





Willow

One of our most popular designs, the Willow has a single large glass panel allows maximum light into your home. Ideal for darker hallways, it also looks great as a back door. Choose from clear, obscured or patterned glazing from a wide range of aesthetic designs to suit all tastes and situations.

- 1 Willow White - Karri
- 2 Willow Blue - Mesquite
- 3 Willow Red - Lignum
- 4 Willow Duck Egg Blue - Jarrab
- 5 Willow Chartwell Green - Karri



Willow

Personalise Your Door - with our easy-to-use fold out range options.

- Choose a door and frame colour to suit your property or personal taste.
- Select your glass.
- Finally no door is complete without the door furniture.

meridian

The 70mm
Composite Door
Range

The Doorway to a
Greener Future

Meridian doors are working in partnership with the Woodland Trust to preserve and promote the UK's traditional woodlands.

European flair combines with British solidarity in the Maple range. Four offset glazed panels give a modern look for a 21st century composite door. It's the perfect door for that Docklands apartment or new townhouse.





- 1 Maple Very Berry - Karri
- 2 Maple Black - Mesquite
- 3 Maple Anthracite Grey - Lignum
- 4 Maple French Grey - Jarrab
- 5 Maple Mid Grey - Karri



Maple

Personalise Your Door - with our easy-to-use fold out range options.

- Choose a door and frame colour to suit your property or personal taste.
- Select your glass.
- Finally no door is complete without the door furniture.



The 70mm
Composite Door
Range

The Doorway to a
Greener Future

Meridian doors are working in conjunction with the Woodland Trust to preserve and protect the UK's woodland





With a minimal amount of care and maintenance your Meridian door will stay looking good and perform superbly for many years to come. Our products are easy to use and simplicity itself to care for and maintain.

Cleaning of PVCu Frames (White)

Under normal circumstances the washing down of doors with dilute washing up liquid will suffice but occasionally where more stubborn stains build up it may be necessary to use a non-abrasive PVCu liquid cleaner. Apply the cleaner using a dry cloth. Use sparingly in small circular motions then buff back to shine.

Cleaning of PVCu Frames (Grained/Laminated Colour Finish) and Composite opening leaf

Use only diluted washing up liquid and water. Do not use any cleaning fluid on wood grain finish doors.

NB: Please do not personally attempt repairs your door as this may invalidate the warranty. They are highly engineered products and require specialist parts and experience. We have experienced fitters and service engineers that will be happy to assist with any repair issues that you may experience.

Entrance Door Operation

Meridian doors have a high security multi-point locking system. The door can be opened from either side by unlocking the cylinder key then pushing down the handle.

To close simply push or pull the door as applicable, and pull the handle upwards to engage the multi-point locks, then turn the key to lock the door. When the door is locked you should not be able to push the handle down.



The following section indicates simple best practice 'do's & don'ts' to ensure continual optimum performance of your doors.

Do

- Clean the glass regularly with a good quality liquid spray glass cleaner.
- Do ensure extra care is taken when cleaning the glass that has antique diamond lead or lead around the bevels.
- Frequently wash down the PVCu profiles with warm soapy water and wipe dry.
- Only use cleaning materials which do not impair anti-corrosion properties of the surface coatings.
- Ensure drainage slots are unblocked and free from dirt and debris.
- Keep all tracks clear of dust and debris in order to reduce the wear on sliding parts.
- All moving mechanical parts are lubricated - hinges, locks and keep plates will benefit from a small application of light oil at least once a year.
- Replace damaged or worn parts with original Phoenix parts.

Do Not

- Use any type of bleach, solvent (e.g. white spirit, methylated spirits, nail varnish remover) or adhesives.
- Use abrasives or brass cleaner on furniture: handles, door knockers, letter plates.
- Use glass cleaner on the PVCu profile.
- Use abrasive paste or cream cleaners on any laminated profile.
- Use excessive pressure when cleaning PVCu.
- Use high pressure or steam cleaners.
- Use any abrasive papers, such as sandpaper.
- Paint or try to remove paint.
- Use any unspecified tools.

DURAFLEX Frame 70mm - Comp Door Sizes (Min/Max)*

Door Style	Min Width (mm)	Max Width (mm)	Min Height Std PVC (mm)	Max Height Std PVC (mm)	Min Height Low Aluminium (mm)	Max Height Low Aluminium (mm)
Birch	810	994	2006	2116	1979	2089
Elm	810	994	2006	2116	1979	2089
Oak Solid	810	994	2006	2116	1979	2089
Alder	810	994	2006	2116	1979	2089
Ash	810	994	2006	2116	1979	2089
Teak	810	994	2006	2116	1979	2089
Cedar	810	994	2006	2116	1979	2089
Willow	810	994	2006	2116	1979	2089
Maple	810	994	2006	2116	1979	2089

* Please note: All heights exclude 30mm cill; Low PVC threshold available in WHITE only; Arched doors not available; Colour match between the outerframe in Rosewood and Light Oak and door slabs in Dark Wood and Light Wood is not exact due to differences in the material.

Five Steps to Your Perfect Door



Step 1

Decide on your door style. Twin glazed, single or solid, you can choose from our extensive ranges featured in the following pages.



Step 2

Select your glass. So many designs to select from, just refer to the pages relating to your door style for details.



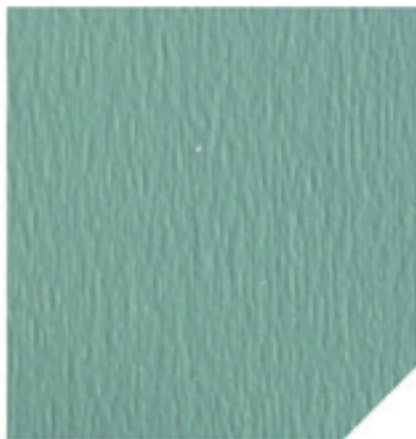
Step 3

Choose a colour to suit your property or personal taste, there are great colours to choose from or you can request a bespoke colour.



Step 4

Choose a frame colour to suit your door. You can have it in white or matching the colour of your door.



Step 5

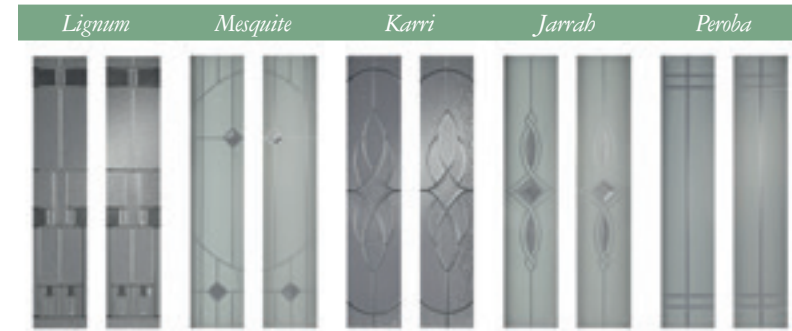
Finally no door is complete without the door furniture, we have a wide range of knockers, letterplates and handles to enhance your chosen door.



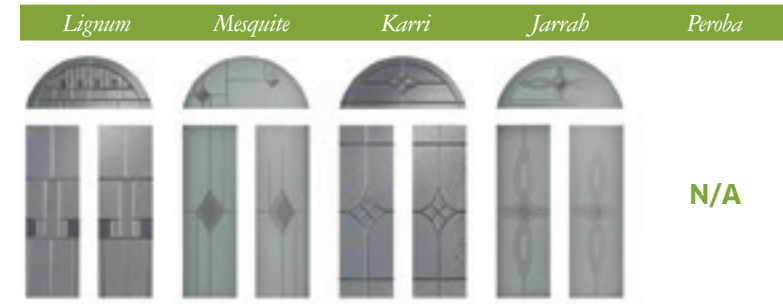
Finished Door

Glazing Options

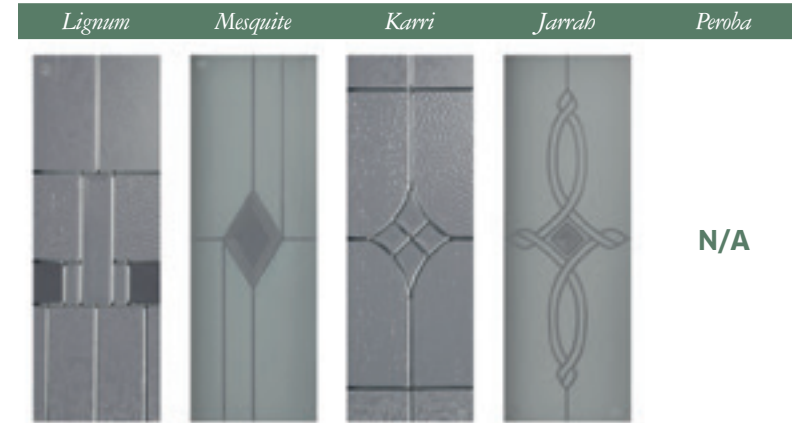
Birch



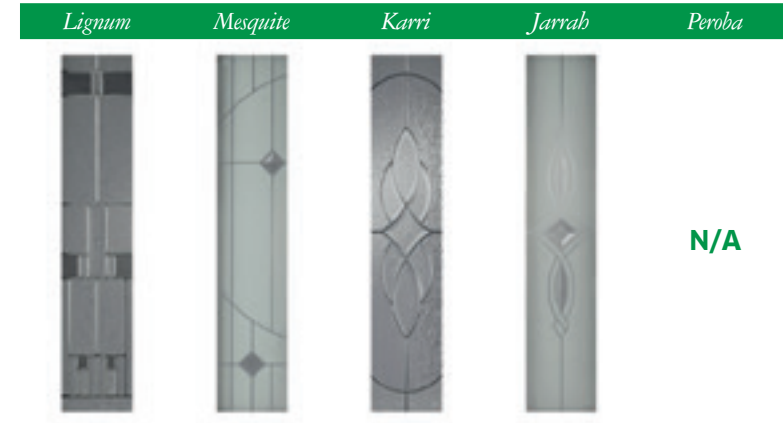
Teak



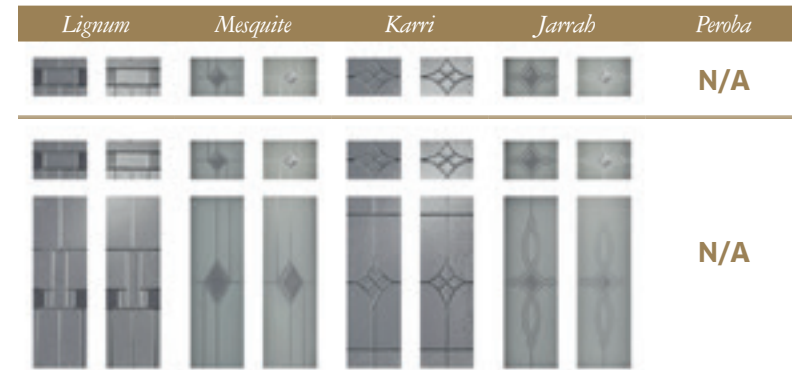
Elm



Cedar



Alder



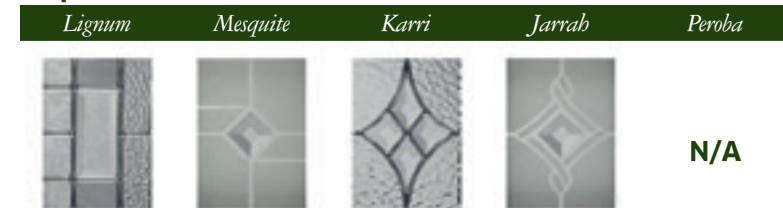
Willow



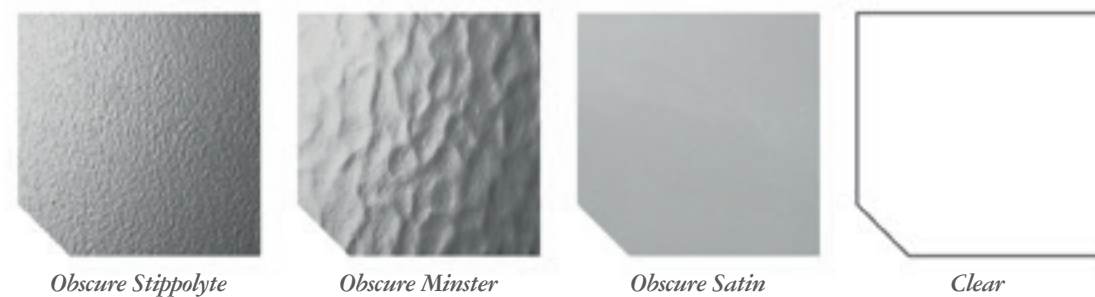
Ash



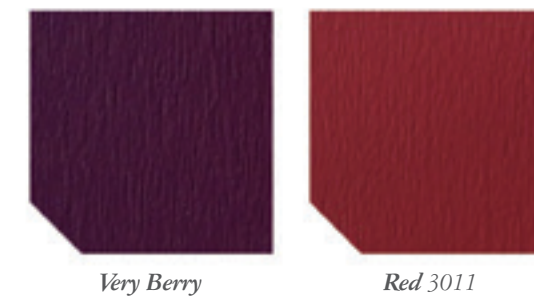
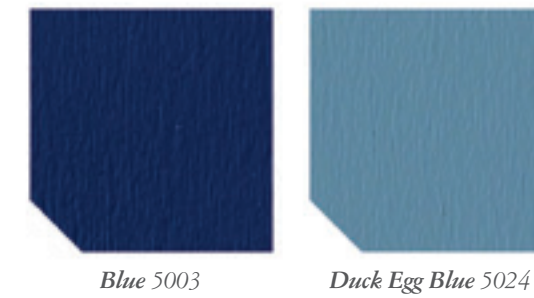
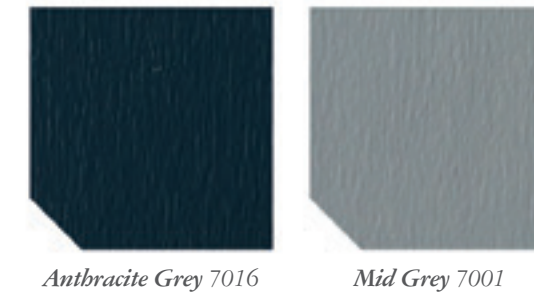
Maple



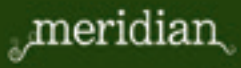
Obscure and Clear Glass Options (Available for all doors)



Colour Options



Hardware Options



Door Handles



Letterplates



Knockers



Hinges



For further details on these products go to page 16.

A Rated
Energy Performance

**Secured
By Design
Compliant**

**50mm
Triple Glazing
As Standard**

**19%^{More} Thermally
Efficient**

**59% Thicker Than a
Standard Door**



*Meridian doors are
working in conjunction with
the Woodland Trust to preserve
and protect the UK's woodland*

meridian

Range Options Fold Out

Easy-to use fold out page, to help you create and personalise your composite door

meridian

[Contact us](#)

