

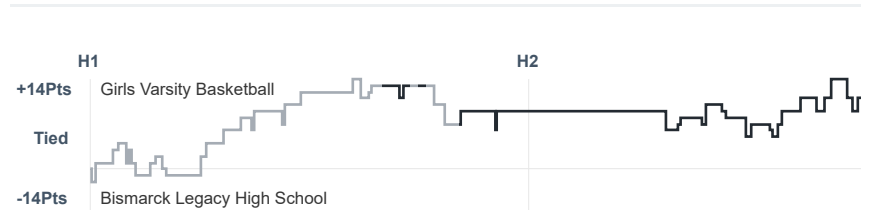
Box Score Report

BHS @ Bismarck Legacy - Feb 23, 2021 - W 73-65

Period Stats

Team	1	2	Final
BHS	39	34	73
LHS	30	35	65

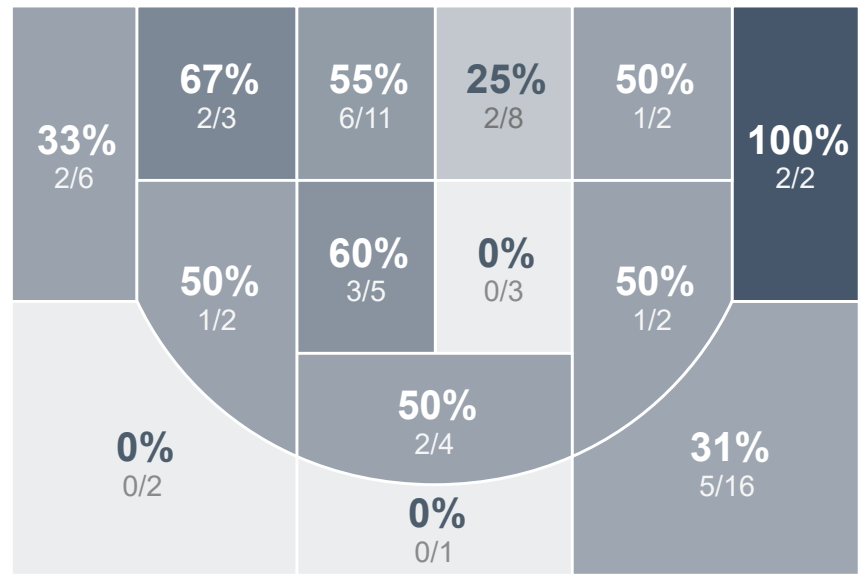
Run Graph



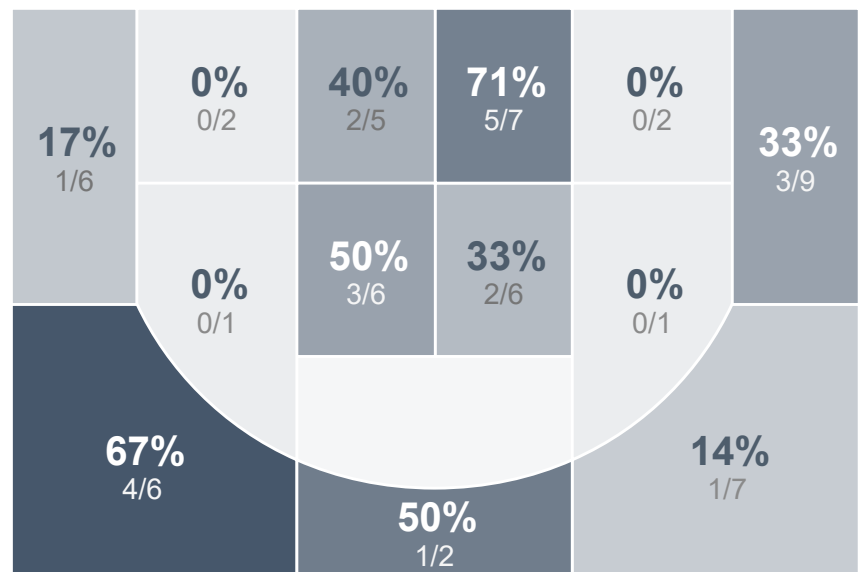
Team Stats

	BHS	LHS
Field Goal %	40.3%	36.7%
Effective Field Goal %	47.0%	45.0%
2FG Made/Attempted	18/40	12/30
2FG%	45.0%	40.0%
3FG Made/Attempted	9/27	10/30
3FG%	33.3%	33.3%
FT Made/Attempted	10/12	11/17
Free Throw Percentage	83.3%	64.7%
Points Per Possession	1.03	0.87
Transition Points	12	12
Points Off Turnovers	20	11
Second Chance Points	6	11
Points in the Paint	22	24
Offensive Rebounds	10	11
Defense Rebounds	25	32
Assists	18	14
Deflections	10	8
Steals	8	2
Blocks	1	0
Turnovers	8	18
Personal Fouls	18	13
Charges Taken	2	1

Girls Varsity Basketball



Bismarck Legacy High School



Girls Varsity Basketball's Player Stats

Name	Pts	FG	3FG	FT	+/-	MINS	OREB	DREB	AST	DEFL	STL	BLK	TO	FOUL	CHG
#1 Paige Breuer	2	1/4	0/3	0/0	- 8	16	0	1	2	0	0	0	1	1	0
#2 Sydney Gerving	4	2/3	0/0	0/0	- 3	13	0	0	1	1	0	0	1	2	0
#3 Halle Wetsch	0	0/1	0/0	0/0	- 3	11	2	1	1	0	0	0	0	3	0
#5 Mandie Picard	9	3/10	1/4	2/2	+ 8	28	0	1	2	1	0	0	2	2	1
#11 Miyah Holzworth	3	1/3	1/2	0/0	+ 12	31	1	3	3	3	3	1	1	1	0
#20 Mia Hinsz	2	1/5	0/2	0/0	0	9	1	1	0	1	1	0	0	0	0
#22 Jilee Golus	17	7/15	2/4	1/1	+ 8	26	1	6	3	2	2	0	1	2	0
#23 Payton Gerving	26	10/15	4/7	2/3	+ 12	29	1	2	3	1	0	0	1	1	0
#24 Peyton Neumiller	8	2/10	1/5	3/4	+ 14	17	1	4	3	1	2	0	1	5	0
#33 Ali Gulleeson	2	0/1	0/0	2/2	0	13	1	1	0	0	0	0	0	1	1

Bismarck Legacy High School's Player Stats

Name	Pts	FG	3FG	FT	+/-	MINS	OREB	DREB	AST	DEFL	STL	BLK	TO	FOUL	CHG
#11 Hailyn Weigel	11	4/8	3/6	0/0	- 9	26	0	2	0	2	0	0	1	1	0
#14 Breena Sand	2	1/6	0/3	0/1	- 5	30	0	2	1	0	0	0	1	1	0
#22 Alyssa Eckroth	9	3/9	2/5	1/3	- 8	26	2	6	4	1	0	0	3	2	0
#23 Arianna Berryhill	13	4/12	2/6	3/5	- 15	29	3	6	2	1	0	0	6	2	1
#30 Jaiden Baker	20	7/15	2/6	4/4	0	26	4	5	3	3	2	0	4	5	0
#35 Ashley Guthmiller	5	2/7	1/3	0/0	- 6	27	0	0	2	1	0	0	1	1	0
#44 Hannah Stymeist	3	0/2	0/1	3/4	+ 5	20	1	4	2	0	0	0	2	0	0
#45 Alece Blazek	2	1/1	0/0	0/0	- 2	12	1	2	0	0	0	0	0	1	0