

Emmons County Courthouse

Doors and Security

Exterior Doors



1. Door removal and infill
2. Door replacement – Commercial insulated steel exterior door with keyed and keyless (card reader) entry
3. Door replacement – Commercial insulated steel exterior door with keyed and keyless (card reader) entry

ALL ANGLES WHICH HAVE NOT BEEN SHOWN OTHERWISE SHALL BE 45° OR WALL THICKNESS:

3" x 3" x	4" x 4" x
4" x 4" x	6" x 6" x
6" x 6" x	8" x 8" x
8" x 8" x	10" x 10" x
10" x 10" x	12" x 12" x

CONCRETE:

1. Footings are designed for a working width bearing capacity shall be approved by the architect prior to placing footings.
2. All footings shall bear on natural undisturbed soil as required prior to and during the placing of backfill.
3. Supports for the walls are in place.
4. Protect all foundations from the action of water and freeze.

MECHANICAL:

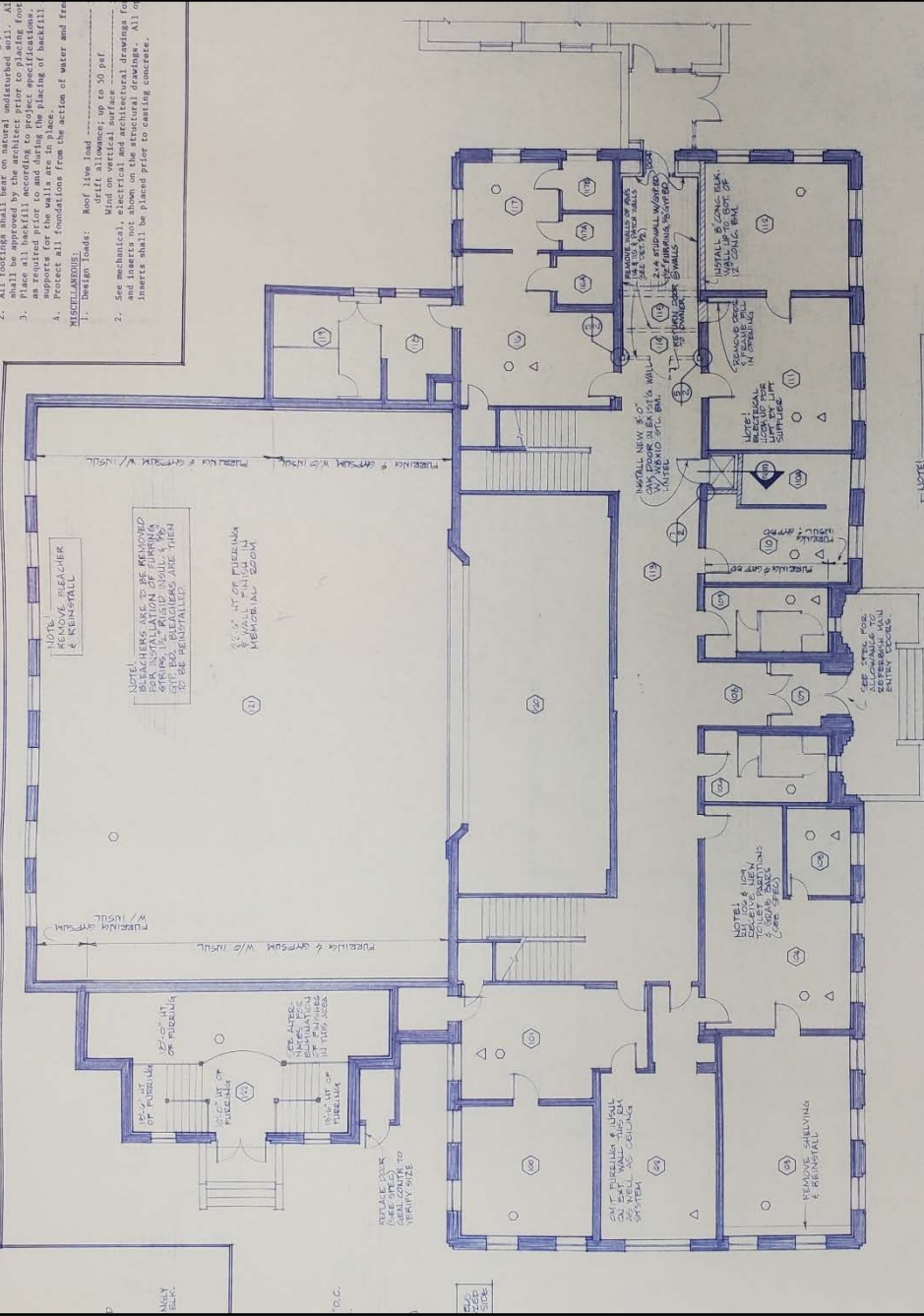
1. Design loads: Roof live load: drift allowance: up to 50 psf
2. See mechanical, structural drawings for details and inserts not shown on the structural drawings. All inserts shall be placed prior to casting concrete.

SEE PLAN STAIRS W/ 1500
 (1) CANTILEVER SECTION
 (2) 15'-0"

REMOVAL OF CANTILEVER BEAM
 (1) 7'-0"

REMOVE BLEACHER & REINFORCEMENT
 (1) 12'-0" HT. OF PILING
 (1) 12'-0" HT. OF PILING
 (1) 12'-0" HT. OF PILING

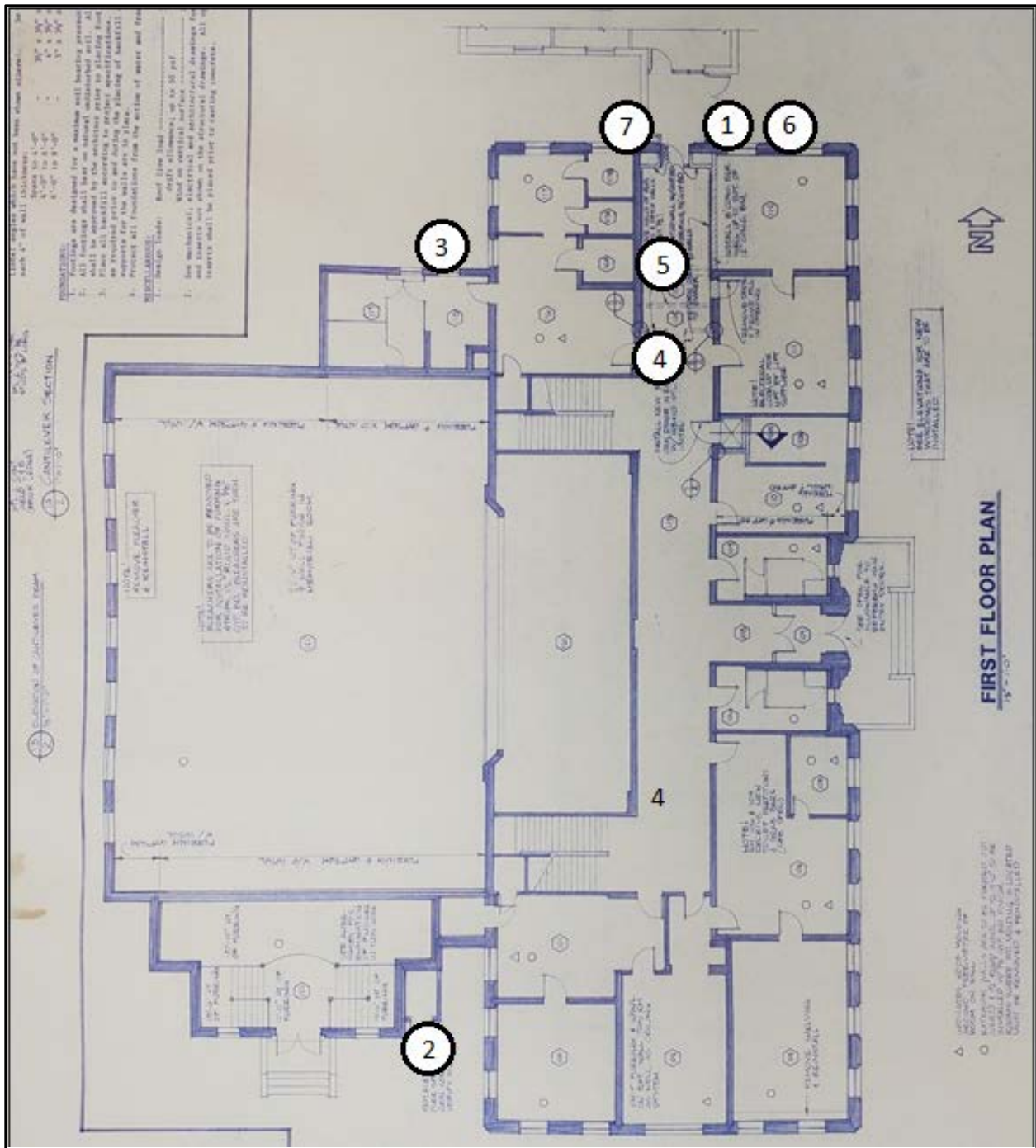
REMOVE SHELVING & REINFORCEMENT
 (1) 12'-0" HT. OF PILING
 (1) 12'-0" HT. OF PILING
 (1) 12'-0" HT. OF PILING



FIRST FLOOR PLAN
 1/8" = 1'-0"

NOTE: SEE ELEVATIONS FOR NEW WALLS TO BE INSTALLED.

- △ UNLESS SPECIFIED OTHERWISE, REMOVE ALL WALL
- REMOVE ALL WALLS TO BE REMOVED UP TO 12'-0" HEIGHT
- REMOVE ALL WALLS TO BE REMOVED TO 12'-0" HEIGHT
- REMOVE ALL WALLS TO BE REMOVED TO 12'-0" HEIGHT



1. Exterior door removal and infill
2. Door replacement – Commercial insulated steel exterior door with keyed and keyless (card reader) entry
3. Door replacement – Commercial insulated steel exterior door with keyed and keyless (card reader) entry
4. Door replacement - Commercial insulated steel interior door with keyed and keyless (card reader) entry (basement, no map available)
5. Door replacement - Commercial insulated steel interior door with keyed and keyless (card reader) entry (basement, no map available)
6. Add keyed and keyless (card reader) entry
7. Add keyed and keyless (card reader) entry



Door 1 Exterior



Door 1 Interior

Remove and infill



Door 2 Exterior



Door 2 Interior

Remove and replace with commercial insulated steel exterior door with keyed and keyless entry



Keyless
Entry

Door 3 Exterior



Door 3 Interior

Remove and replace with commercial insulated steel exterior door with keyed and keyless entry



Door 4 Interior Mechanical Room



Door 5 Interior IT Room

Remove and replace both with commercial insulated steel interior door with keyed and keyless entry



6: Keyless entry



7: Keyed and keyless Entry