

# Weekly Commodities Charts Newsletter

February 12, 2018

The Weekly Commodities Charts Newsletter provides Cornelius Luca's trade ideas, model signals, and absolute charts

© 2018 Luca Global Markets, LLC. All rights reserved. This content is provided as general information only and does not constitute investment advice or a representation that any investment, security or other product is suitable for any person. This content reflects the opinions only of the author and cannot be interpreted as advice.

This content is the intellectual property of Cornelius Luca. Any copying, distribution or redistribution of this content is expressly prohibited without the prior written consent of Cornelius Luca.

Cornelius Luca shall not be liable for any errors in the content, or for any actions taken in reliance thereon.

# Trade Ideas

- Energy: Short crude oil *while below* the 10-day exponential moving average
- Metals: Long gold *only IF above* the 21-day exponential moving average
- Softs: Long soy meal *while above* the 5-day exponential moving average

# Commodities Models – Daily & Weekly

	<i>Commodity</i>	<i>Daily Model</i>	since	Daily Bias (> or < 21-day EMA)	Daily Risk	<i>Weekly Model</i>	since	Weekly Bias (> or < 21-week EMA)	Weekly Risk
Energy	Crude Oil	S	2-Feb	bearish	slightly bearish	S	7-Feb	slightly bullish	slightly bearish
	Brent Crude	S	2-Feb	bearish	slightly bearish	S	3-Feb	slightly bearish	slightly bearish
	Natural Gas	S	30-Jan	bearish	bearish	S	1-Feb	bearish	slightly bearish
Metals	Gold	L	12-Feb	slightly bearish	slightly bullish	L	12-Feb	slightly bullish	slightly bullish
	Silver	L	12-Feb	slightly bearish	slightly bullish	L	12-Feb	slightly bearish	slightly bullish
	Copper	L	12-Feb	bearish	slightly bullish	L	12-Feb	sideways	neutral
Softs	Coffee	S	9-Feb	slightly bearish	slightly bearish	S	12-Feb	slightly bearish	slightly bearish
	Soy Meal	L	6-Feb	bullish	bullish	L	16-Jan	bullish	slightly bullish
	Wheat	L	12-Feb	bullish	slightly bullish	L	22-Jan	bullish	slightly bullish
	Corn	L	12-Jan	bullish	slightly bullish	L	17-Jan	slightly bullish	slightly bullish

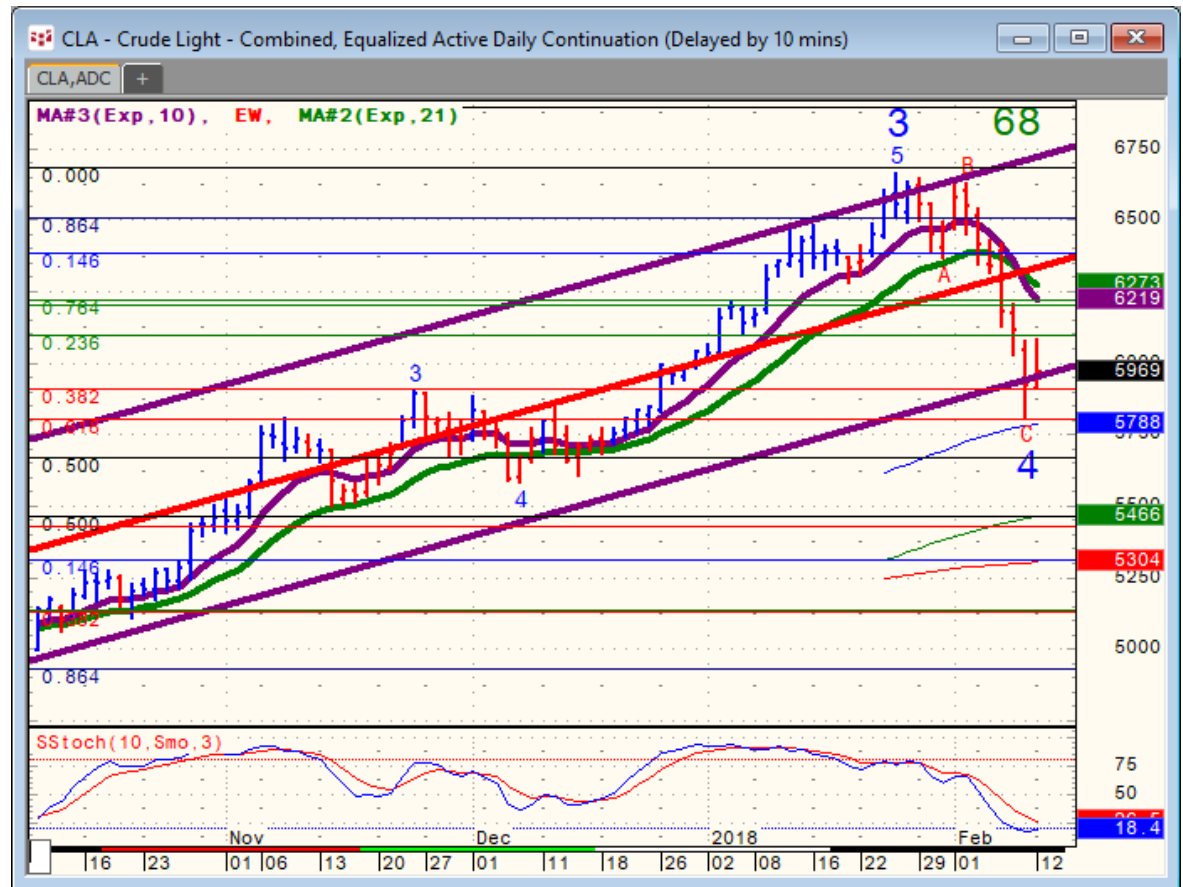
Source: Proprietary Luca Global Markets, LLC Model

# Commodities Energy Trade Idea

## Comment:

### Short crude oil *while below the 10-day EMA*

- Crude oil is consolidating after sliding from a 2 ¼ - year peak
- Still, the financial squeeze on Russia had been eased
- Crude trades below both its 10- & 21-days EMAs
- Initial support: 58.00
- Further support: 55.80 & 54.65
- Initial resistance: 61.00
- Further resistance: 62.20 & 63.70
- Fast stochastics: bearish



CQG Inc. © 2018 All rights reserved worldwide. <http://www.cqg.com>

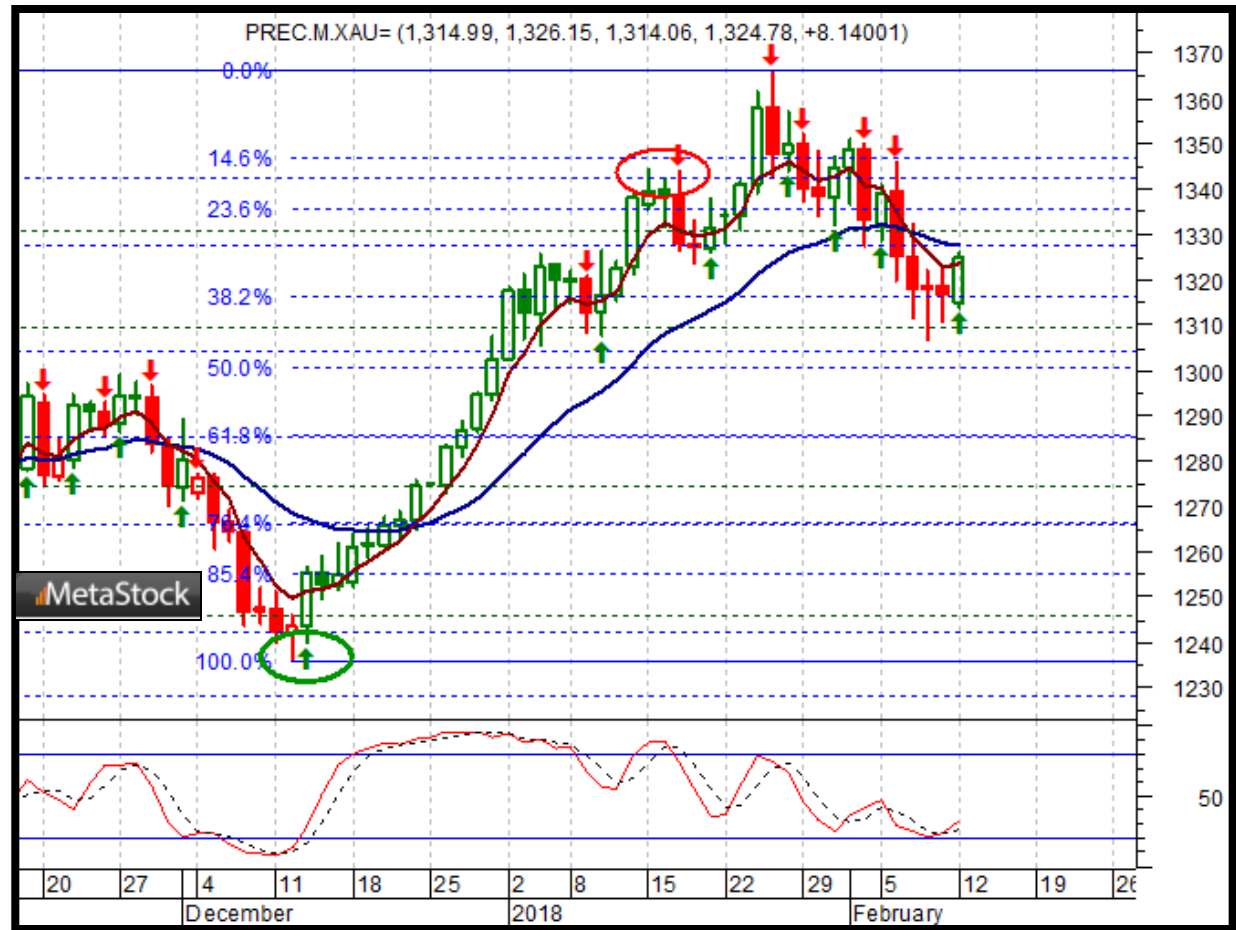
Mon Feb 12 2018 13:23:46, CQG 17.12.860

# Commodities Metals Trade Idea

## Comment:

**Long gold *only IF* above the 21-day EMA**

- Gold fell in line with the S&P 500, showing no fear in the markets
- It is consolidating around its 5-day EMA
- Only a clear break above its 21-day EMA would encourage fresh long positions
- Initial resistance: 1,328
- Further resistance: 1,366
- Immediate support: 1,307
- Further support: 1,291, 1,266 & 1,236
- Fast stochastics: slightly bullish



# Soft Commodities Trade Idea

## Comment:

### Long soy meal *while above the 5-day EMA*

- Soy meal gapped up to an over 1 ½ -year high
- It trades well above both its 5- & 21-day EMAs
- It's overbought, but only a break below its 5-day EMA would signal sales toward the 21-day EMA
- Initial resistance: 358.20
- Further resistance: 366.70, 393.80 & 411.70
- Immediate support: 348.50
- Further support: 343.00 & 333.70
- Fast stochastics: bullish



# How to Use the Heat Map

Bias: If the Candle > 21-period EMA = bullish  
 If the Candle < 21-period EMA = bearish  
 If the Candle around 21-period EMA = sideways

Long or Short	Commodities	Since when		Risk: Bullish or Bearish Candle as of Monday am EST					
		Daily Model	since	Daily Bias (> or < 21-day EMA)	Daily Risk	Weekly Model	since	Weekly Bias (> or < 21-week EMA)	Weekly Risk
Energy	Crude (CLc1)	S	27-Apr	bullish	slightly bullish	L	23-Mar	slightly bearish	slightly bullish
	Brent (LCOc1)	L	21-Apr	slightly bullish	slightly bullish	L	6-Apr	slightly bearish	slightly bullish
	Natural gas (NGc1)	S	23-Apr	bearish	bearish	S	20-Apr	bearish	slightly bearish
	Palm oil (FCPOc1)	L	24-Apr	sideways	neutral	S	20-Apr	slightly bearish	slightly bearish
Metals	Gold (GCc1)	S	24-Apr	bearish	bearish	S	20-Mar	slightly bearish	slightly bearish
	Silver (SIc1)	S	22-Apr	bearish	bearish	S	24-Apr	bearish	bearish
	Platinum (PLc1)	S	20-Apr	bearish	bearish	S	20-Mar	bearish	slightly bullish
	Copper (HGc1)	L	24-Apr	slightly bearish	slightly bullish	S	24-Apr	slightly bearish	slightly bearish
Softs	Coffee (KCN5)	L	24-Apr	sideways	neutral	L	24-Apr	slightly bullish	slightly bullish
	Cocoa (LCCN5)	L	23-Apr	bullish	bullish	L	13-Apr	bullish	bullish
	Soy meal (SMN5)	S	24-Apr	bearish	slightly bearish	S	24-Apr	bearish	slightly bearish
	Wheat (WN5)	S	24-Apr	bearish	slightly bearish	S	24-Apr	bearish	bearish
	Corn (CN5)	S	20-Apr	bearish	bearish	S	6-Apr	bearish	bearish

Source: Proprietary Luca Global Markets, LLC Model

L = long  
 S = short