

Library & Information Services to South Africa

OPTIONAL KRUGER NATIONAL PARK EXTENSION

4 days | Explore the national park via Jeep

Kruger National Park was founded in 1898 by a group of dedicated individuals who acted to preserve the northeastern part of South Africa as a national park for future generations to enjoy. Today the park encompasses roughly 7,580 square miles of wildlife safari country, supports species in their natural habitats, and houses the Big Five: lion, elephant, leopard, Cape buffalo, and rhinoceros.

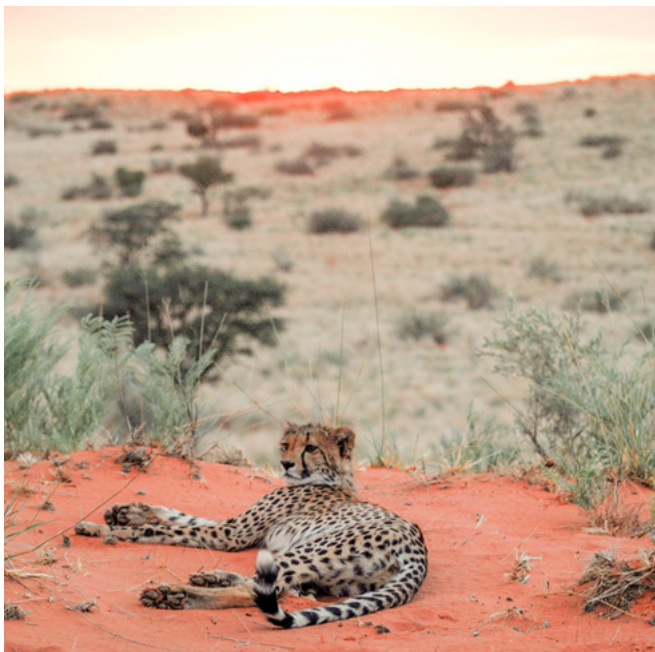
DAY-BY-DAY ITINERARY

DAY 1: NOVEMBER 11, 2020

Head to the Park

From Cape Town, fly to Kruger National Park, one of the world's preeminent wildlife sanctuaries. Lunch is on our own this afternoon if not provided in flight.

Plan on a late afternoon arrival at your hotel, located just outside one of the park entrances, and relax before dinner under the trees and stars.



DAY 2: NOVEMBER 12, 2020

Game Drive Day 1

As the animals prefer to feed during the cool temperatures of early morning, you'll venture out early to witness exotic plant and animal life in the gentle light of the dawn. A packed breakfast will be provided by the hotel for your adventures this morning. Close examination of the riverbank will likely reveal lazy hippos and steel-jawed crocodiles. Your guide can help you spot some, or all, of the Big Five: lion, Cape buffalo, rhinoceros, leopard, and elephant. You'll need no help locating the ever present giraffe, zebra, kudu, impala, and warthog from your open game vehicle today.

After lunch by your own arrangement at a local rest camp, continue your exclusive game-spotting adventure before heading back to the hotel.

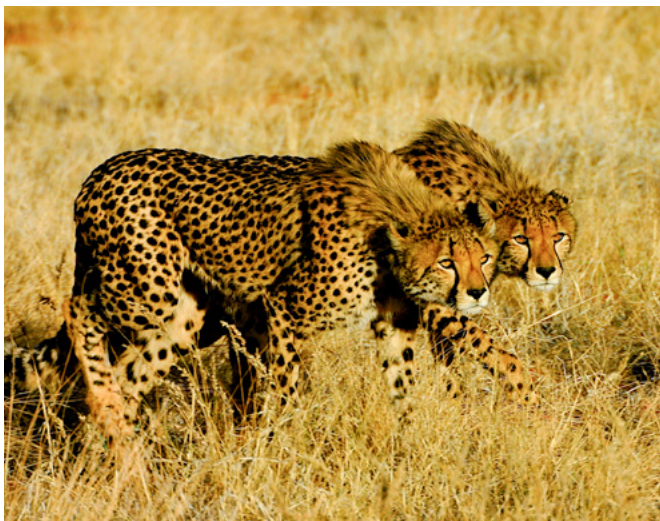
Dinner will be provided this evening at the hotel.



DAY 3: NOVEMBER 13, 2020

Game Drive Day 2

Continue with game drives. The enormity of the park does necessitate significant travel time to explore and observe the most interesting wildlife interactions.



Another early morning ensures prime viewing of the park's exotic species and beautiful landscapes. You're sure to notice an abundance of colorful bird life throughout the park. Observe how the animals blend into their surroundings, as your guide helps you encounter rare and extraordinary animals ranging from the powerful and agile cheetah to the great baboon. You may also witness the rugged wildebeest, the cagey hyena, and many types of antelope during your adventure.

Lunch will be on your own this afternoon during a stop at a local rest camp. Dinner will be provided back at your hotel this evening.



DAY 4: NOVEMBER 14, 2020

Fly Home

After breakfast, check out of your hotel. Head to the Kruger Mpumalanga International Airport in Nelspruit. Check in for your afternoon flight to Johannesburg and onward home.

DAY 5: NOVEMBER 15, 2020

Arrival

Arrive back in the U.S. today.

PROGRAM INFO

Date & Length: 4 days, November 11–14, 2019 (arrival back in the U.S. on November 15)

Extension cost: \$1,999 per person (includes all gratuities) *Single supplement:* \$399

Inclusions: Gratuities, meals as mentioned, flight from Cape Town to Kruger and back to Johannesburg, all park, fees for once daily entry into Kruger National Park, all game drives with private vehicle(s)/guide(s) and unlimited daily mileage on all game drives.

Not Included: Tips to porters or maids at your hotel, meals not mentioned and hotel incidentals like laundry or room service.

To participate in the optional extension, complete and return the extension registration form. Return no later than 90 days prior to departure or within five days of receiving the information.



PROTEA HOTEL KRUGER GATE

Portia Shabangu Road
Skukuza, 1350, South Africa

Phone: +27 13 735 5671

 [marriott.com](https://www.marriott.com)

Their lodge-style hotel, with soaring walkways and treetop ambiance, uniquely offers classic Big 5 safaris in the Kruger National Park with all the comforts of an upmarket 4-star hotel experience. Your adventures into the pristine wilderness will be perfectly balanced by the hotel's contemporary relaxation options. Set in a tranquil riverine woodland of immense African trees, there is a range of elegant accommodations. With refined Africa-inspired décor, all rooms have en-suite bathrooms, air-conditioning, free w-fi and in-room dining. Special highlights of your stay will include game-viewing from the Pool Bar with its stunning infinity pool; luxurious care at the beautifully appointed Spa and sumptuous dining in the glow of stars and wood fires in the outdoor Lapa.

