



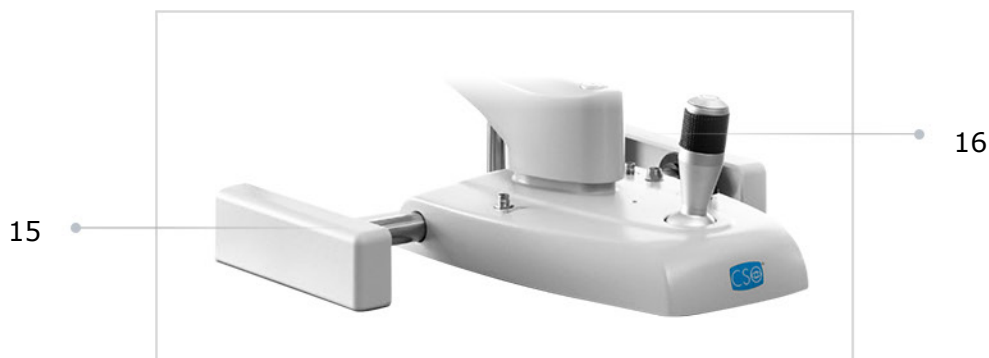
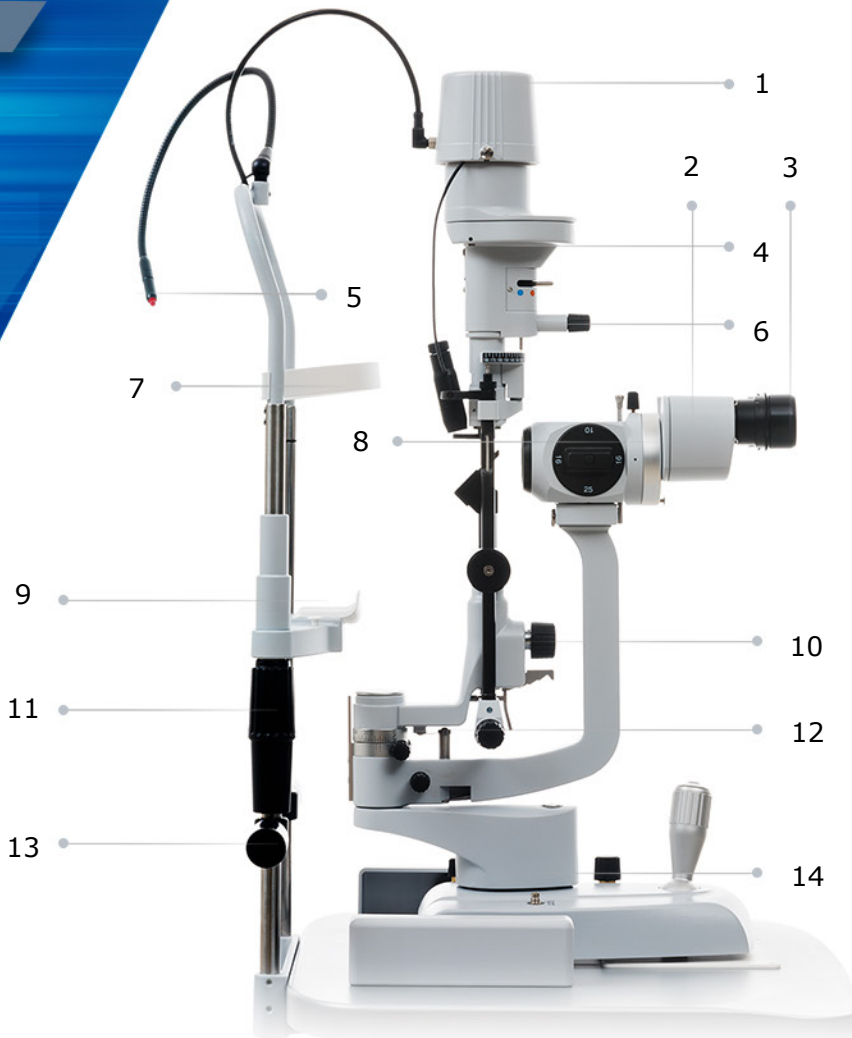
Slit Lamps

SL-9900





1. Light Bulb / LED Cover
2. Microscope
3. Extractable Eyepieces
4. Filter Selection Knob
5. Fixation Point
6. Slit Height Adjuster / Tuner
7. Head Rest
8. Magnification Tuner
9. Chin Rest
10. Slit Projector Head
11. Chinrest Height Adjusting Ring Nut
12. Slit Width Adjusting Knobs
13. Patient's Handle
14. Orthogonally Moving Base
15. Wheel Shields
16. Joystick (lateral, longitudinal & vertical)



Features:

- Ergonomic design, high quality optics and precision mechanical parts
- Selected optical parts, and a new beam splitter equipped with the NEW DIGITAL VISION HR camera
- The life of the LED is longer than 50000 working hours and its color temperature is constant in each situation
- 2MP high performances CCD sensor, with an excellent colour rendering
- SL-9900 slit lamps are engineered to the highest European quality standards and come equipped with LED illumination.

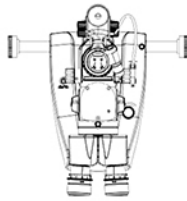
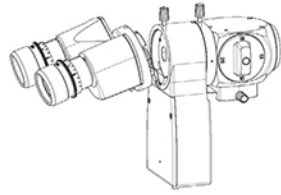


Photo Camera Mount Technology



Extractable Binocular Eyepieces



LED / Slit Lamps

SL-9900

Product Introduction



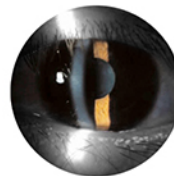
Converging microscope provides comfort to the user when using the slit lamp. All the microscopes have a yellow filter to improve the image quality.



Camera performances are maximized by using the USB 3.0 technology, and an excellent software optimized for ophthalmic purposes.



This high performance camera can capture and record the smallest details while conducting a slit lamp examination. *(Optional)*



Viewlights modern software platforms are optimized for ophthalmic purposes. Providing the optimum quality and price solutions.



The LED technology has an estimated life of 50000 of continuous use. Image colour temperature is maintained at all illumination levels.



Viewlights vision lens measurement software is designed for precise reading and auto detection progressive lens.



Product Specifications

LED / Slit Lamps

SL-9900

Technical Data

Slit Projection	1X
Slit Width (setting continuous)	0 – 12 mm
Slit length (setting continuous)	1– 12 mm
Slit Length (max)	12 mm
Apertures	12, 9, 5, 1, 0.2 mm
Filters	Blue, Red, Gray, Green (Red free)
Light Diffuser	Light Diffuser
Background Light	Only with Digital Vision HR
Slit Rotation	± 90° continuous (Tabo system)
Slit Angle	Variable 0° 5° 10° 15° 20°
Rotation Interval - Slit projection	±90°, angular scale, reference on 0° and ±10°
Working distance	80 mm
Joystick Push Button	Only with Digital Vision HR
Left / Right Detection	Only with Digital Vision HR
Voltage	15V DC 1A
Light Source	White LED
Brightness	248000 LUX continuous adjustment
Dimensions (HxWxD)	675 x 313 x 335mm
Weight	7 kg

System Requirements (Version Digital HR)

PC:	4 GB RAM
Video Card:	1 GB RAM
Resolution:	1024 x 768 pixels
USB	3.0 Type A
Operating System	Windows XP, Windows 7 and Windows 10 (32/64 bit).

Type	Convergent	Galileian convergent with magnification change syste		Galileian convergent with variable magnification
Eyepiece Convergence Angle	13°		6°	
Eyepieces	10x	12,5x	12,5x	12,5x
Eyepiece adjustment	±8 D.			
Magnifications	10x 16x	10x 16x 25x	6x 10x 16x 25x 40x	7X 30X
Field of View		8,5x 14,8x 25,6x	5,6x 8,5x 14,8x 25,6x 39,3x	
Interpupillary distance	18,5mm 12mm	26mm to 8,5mm	41mm to 5,7mm	30mm to 7,4mm
Barrier filter	51,5mm to 87mm	50mm to 80mm		
Barrier filter	Yellow			

