

Rabbit Anti-FGFR1 [MD60R]: RM0313

Intended Use: For Research Use Only

Description: The fibroblast growth factor receptor 1 belongs to the FGF Receptor subfamily. The full-length protein consists of an extracellular region, composed of three immunoglobulin-like domains, a single hydrophobic membrane-spanning segment and a cytoplasmic tyrosine kinase domain. Ligand binding results in the activation of a cascade of downstream signals, ultimately influencing mitogenesis and differentiation. Various isoforms of FGFR1 have been identified that differ in structure and specificity.

Specifications:

Clone: MD60R the same as D8E4
Source: Rabbit
Isotype: IgG
Reactivity: Human, mouse, rat, monkey
Localization: Cytoplasm, nucleus
Formulation: Antibody in PBS buffer pH7.4, containing BSA and $\leq 0.09\%$ sodium azide (NaN₃)
Storage: Store at 2°- 8°C
Applications: IHC, Flow Cyt., ICC/IF, IP, WB

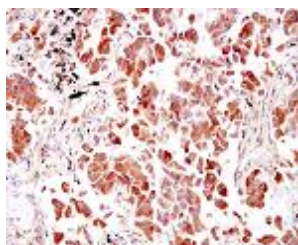
Package:

Description	Catalog No.	Size
FGFR1 Concentrated	RM0313	1 ml

IHC Procedure*:

Positive Control Tissue: Breast
Concentrated Dilution: 25-100
Pretreatment: Citrate pH6.0 or EDTA pH8.0, 15 minutes using Pressure Cooker, or 30-60 minutes using water bath at 95°-99°C
Incubation Time and Temp: 30-60 minutes @ RT
Detection: Refer to the detection system manual

* Result should be confirmed by an established diagnostic procedure.



FFPE human lung carcinoma stained with anti-FGFR1 using DAB

References:

1. Overexpression of FGFR1 Promotes Peritoneal Dissemination Via Epithelial-to-Mesenchymal Transition in Gastric Cancer. Shimizu, D., Saito, T., et al. Cancer Genomics Proteomics. 7 July 2018.
2. FGFR1 Is a Potential Prognostic Biomarker and Therapeutic Target in Head and Neck Squamous Cell Carcinoma. Koole, K., Brunen, D., et al. Clinical Cancer Research. 1 August 2016.
3. Whole-genome sequencing identifies genetic alterations in pediatric low-grade gliomas. Zhang, J., Wu, G., et al. Nature Genetics. 1 June 2013.

Doc. 100-RM0313
Rev. A