

JDD

PACKAGING LTD

Machinery Assessment

- ① When machinery first enters our facility we assess what we have in hand.
- ① Depending on our customers requests we determine the required level of rebuild in order to get the equipment back in production.

TRIANGLE BAG MACHINE

Condition when received



TRIANGLE SCALE

Condition when received



First Stage of rebuild

Power Wash and Disassembly





Second Stage of Rebuild

- After the machinery is washed, and disassembled it is then washed again.
- We have experimented with many different cleaning procedures and have found hot water (200 F) and light degreasers work best.
- If the machinery is of Stainless Steel construction it is soda blasted at 5000 psi and it is ready to reassemble.
- If the machinery is of mild steel construction, depending on the condition of the paint after the washing a paint job may be required. Before the machine is painted, a sand blasting is done to ensure good adhesion to the old paint. The finished product can be seen below.



Third Stage of Rebuild

- All the components that have been stripped off the machinery are now rebuilt, tested, or replaced with new parts. The following are some examples:
 - Scales cleaned, new air lines, all manual adjustments set back to factory specifications, oil replaced, bench calibrated with proper testing unit.
 - Bucket doors bushings replaced, pivots inspected for wear and replaced as needed, all nuts and bolts assembled with proper LOCTITE for thread sizing.
 - Vibrators depending on the condition the vibrators may just be tuned to factory specifications. If required the vibrators will be stripped to the frames, sand blasted, primer coat and final coats with STEEL-IT paint (stainless look), new wiring, sealed with silicone to prevent moisture, re-tuned
 - Pneumatic system Scale all new airlines, air cylinders, and solenoids are installed. Bagger airlines, air cylinders, and solenoids are replaced as needed.
 - Jaws and Backseal new bushings, new heaters (if needed), new thermocouples, connectors and cables replaced
 - Electrical all circuit boards cleaned and cycle tested, power supply voltages check and adjusted.

Rebuilt Jaws 

Accumulator Doors rebuilt.
Masking tape to hold in place after
heated to take out warping (plastic doors)

Scales rebuilt and calibrated



Fourth Stage of Rebuild

- In this stage all the parts that are rebuilt are now installed on the machine.
- The Scale and Bagger are mechanically and electrically connected together.
- Troubleshooting and I/O checkouts are done.
- It is required that the customer supplies film so the bag machine can run empty bags for continued testing.
- If practical we recommend the customer sends product so we can fully test the machinery, to help assist with further testing.
- We recommend the customer makes a visit to our facility to view the machine so that they are satisfied with all the work before shipping.
- After the machinery is running to our satisfaction we disconnect the Scale and Bagger, and prepare the machinery for shipping.

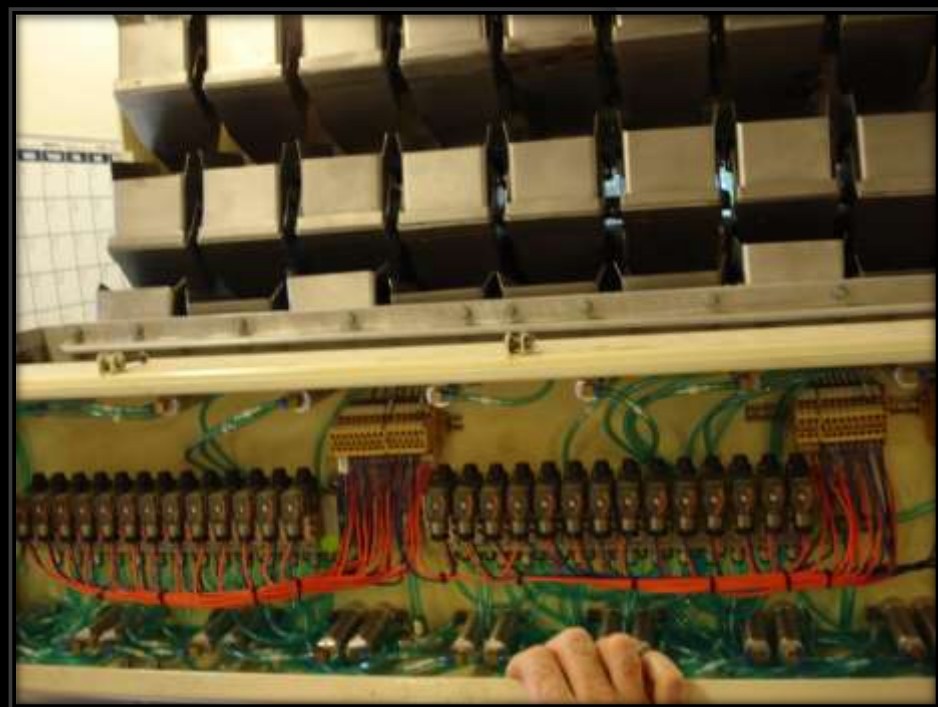
OLD vs. NEW Pneumatics

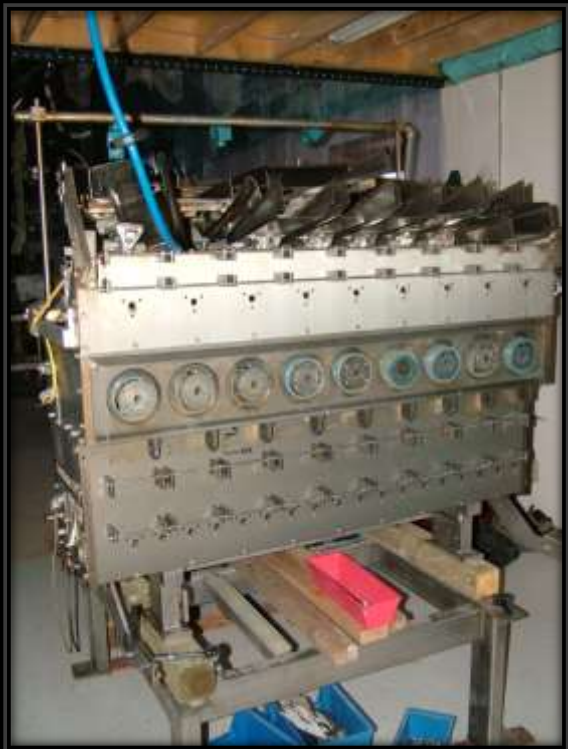


OLD vs. NEW Pneumatics











THANK YOU

for viewing our Triangle rebuild presentation

The logo for JDD Packaging Ltd, featuring the letters 'JDD' in a large, bold, blue, italicized serif font. The 'J' is particularly stylized with a long, sweeping tail that extends to the left. The 'D's are also bold and have a slight curve at the top.

PACKAGING LTD