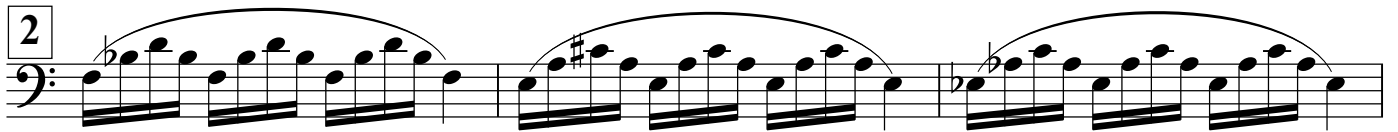
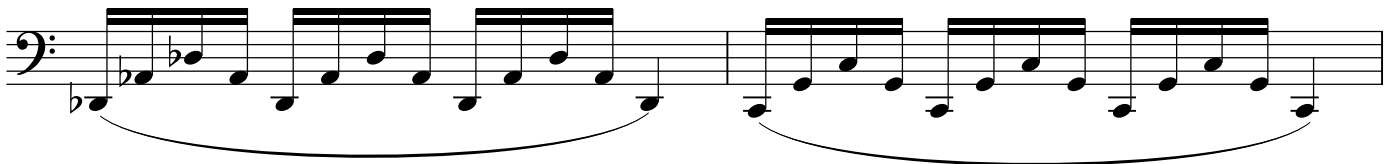
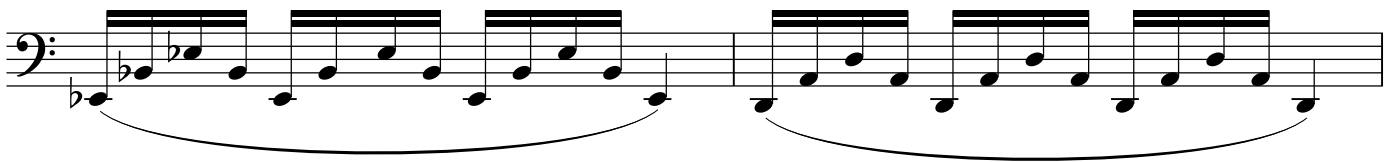
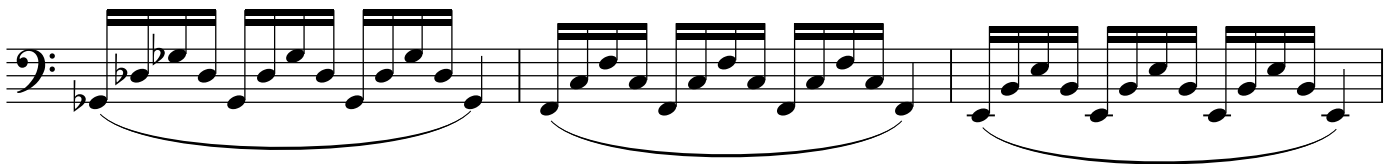
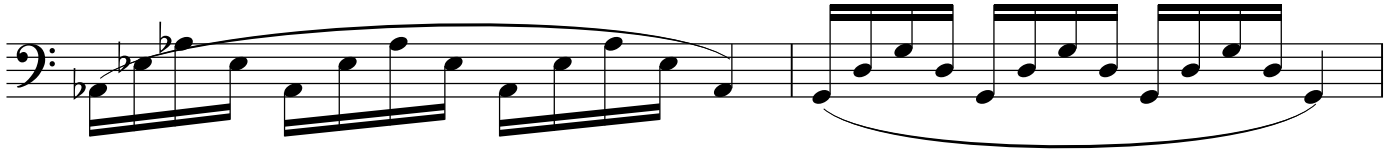
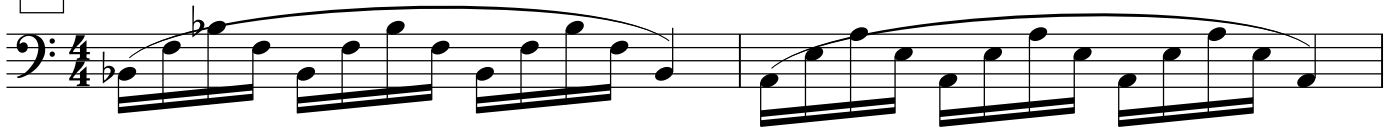


# Fast Three-Note Lip Slurs

## Euphonium

1



3

4

5

6

The image displays a musical score for four staves of bass clef music. The first staff begins with a box containing the number '6'. The music is organized into four systems, each consisting of two measures. The notes are eighth notes, and various accidentals (flats and sharps) are used throughout. Slurs are placed over the notes in each measure, indicating phrasing. The first system has a flat on the first note of the second measure. The second system has flats on the first and second notes of the first measure. The third system has flats on the first and second notes of the first measure. The fourth system has a sharp on the second note of the first measure.