

Mouse Anti-CDw75 [LN-1]: MC0092, MC0092RTU7

Intended Use: For Research Use Only

Description: Cdw75 is proposed as the ligand for CD22 mediating B-cell-B-cell interaction. Clone LN1 recognizes a sialoantigen on cell membranes. On tissue sections, it causes a marked reaction with the B lymphocytes in germinal centers, but only a faint reaction with B lymphocytes of the mantle zone in lymphatic tissues. LN1 also reacts with various types of epithelial cells, including cells of the distal renal tubules, breast, bronchus, prostate and erythrocytes.

Specifications:

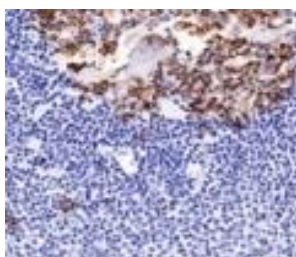
Clone: LN-1
 Source: Mouse
 Isotype: IgM/k
 Reactivity: Human
 Localization: Membrane, cytoplasm
 Formulation: Antibody in PBS pH7.4, containing BSA and ≤ 0.09% sodium azide (NaN₃)
 Storage: Store at 2°- 8°C
 Applications: IHC, Flow Cyt., ICC/IF
 Package:

Description	Catalog No.	Size
CDw75 Concentrated	MC0092	1 ml
CDw75 Prediluted	MC0092RTU7	7 ml

IHC Procedure*:

Positive Control Tissue: Tonsil, spleen
 Concentrated Dilution: 50-200
 Pretreatment: Citrate pH6.0, 15 minutes using Pressure Cooker, or 30-60 minutes using water bath at 95°-99°C
 Incubation Time and Temp: 30-60 minutes @ RT
 Detection: Refer to the detection system manual

* Result should be confirmed by an established diagnostic procedure.



FFPE human spleen stained with anti-CDw75 using DAB

References:

1. Synthesis and expression of CDw75 antigen in human colorectal cancer. Costa-Nogueira C et al. BMC Cancer. 2009.
2. Paraffin immunoreactivity of CD10, CDw75, and Bcl-6 in follicle center cell lymphoma. Dunphy CH et al. Leuk Lymphoma. 2001.
3. Cell cycle-dependent regulation of CDw75 (beta-galactoside alpha-2,6-sialyltransferase) on human B lymphocytes. Erikstein BK et al. Eur J Immunol. 1992.

Doc. 100-MC0092
Rev. A