

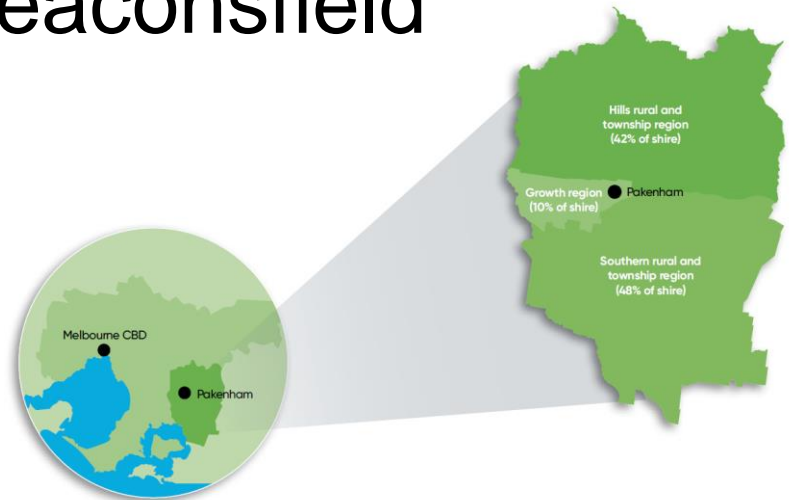
Cardinia Shire Council

Cardinia Shire's Liveability Plan 2017-29

Pieta Bucello, A/Team Leader Social and Community Planning
New Urban Agenda Conference, 1 Nov, 2018

Introduction to Cardinia Shire

- Located 50km South East of Melbourne
- Interface, Growth Council
- Pakenham, Officer, Beaconsfield
- 27 townships
- 3 distinct regions



Our Community

- Population 109,000 people
- Our population is due to double over the next 20 years to over 195,000
- Among the largest and fastest growing LGAs in Victoria & Australia
- 7 families moving in each day
- Majority of households are families with children
- 11% of the population now speak a Language Other Than English (LOTE)
- 16% of the population have a disability
- High youth population

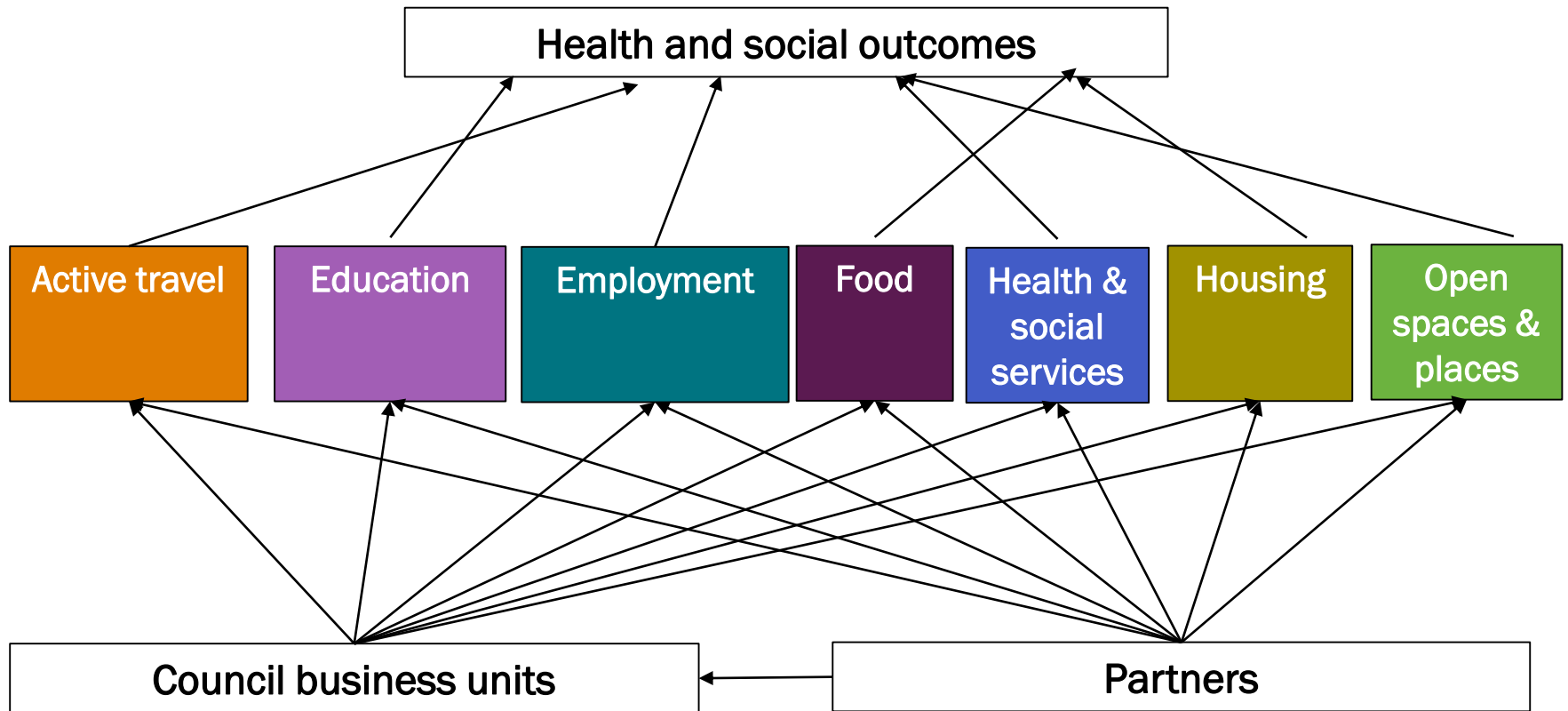
An evidence-based plan

- Undertook an analysis of all our social and health data (40 external sources)
- Compiled a profile that identified seven liveability areas of need (domains)
- Seven priority social and health outcomes we wanted to improve

Adapting the model

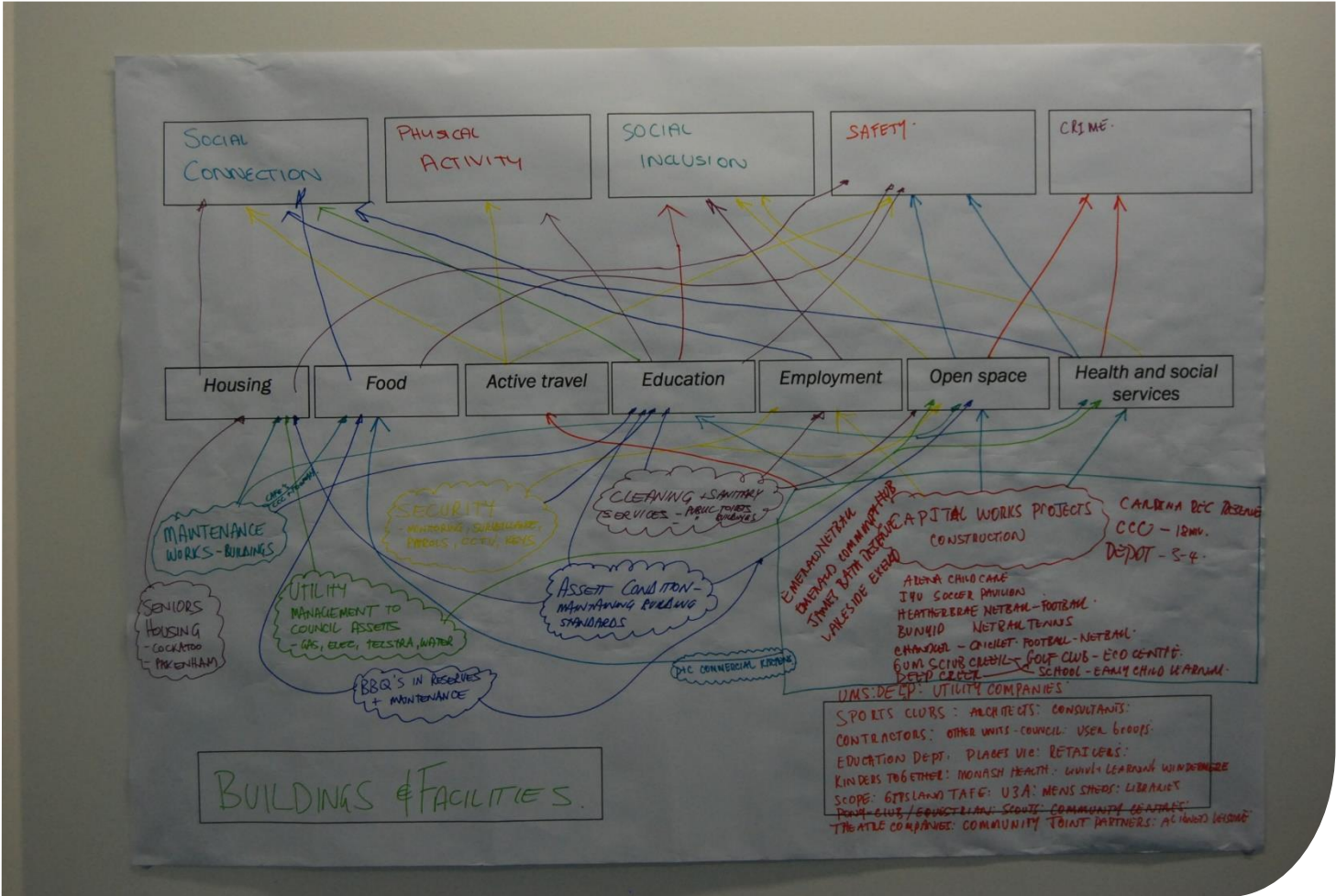
Original Liveability Domains	Adapted Liveability Domains
Walkability	Active travel
Transport	Education
Employment	Employment
Food	Food
Social infrastructure	Health and social services
Housing	Housing
Pubic open space	Open spaces and places

Adapting the model



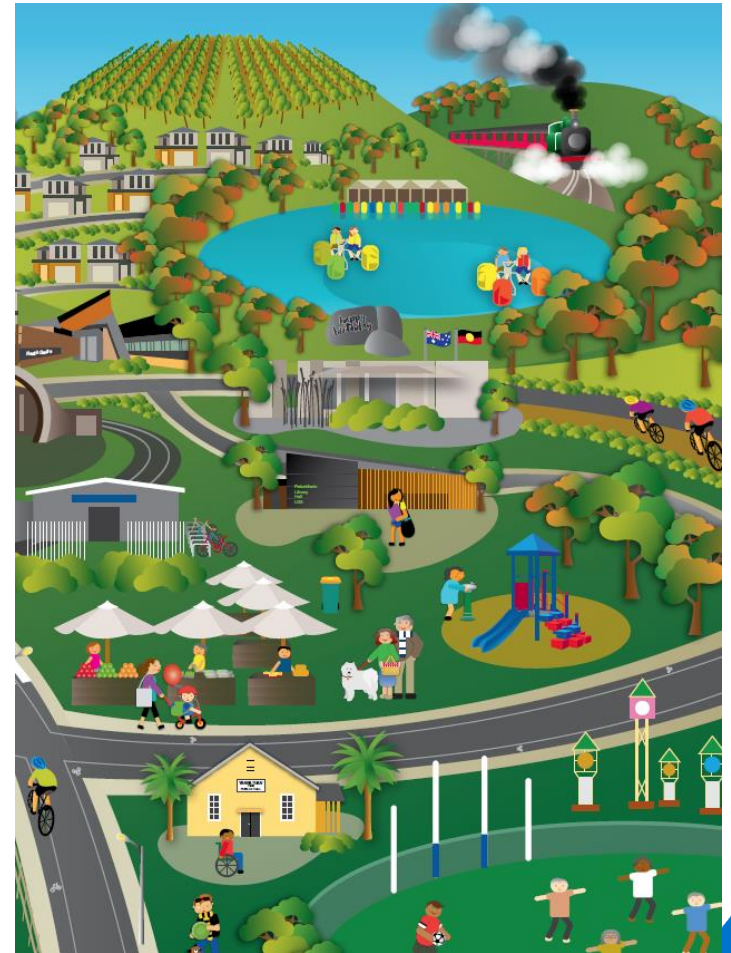
If we can influence these domains, we can impact health and social outcomes.

for example



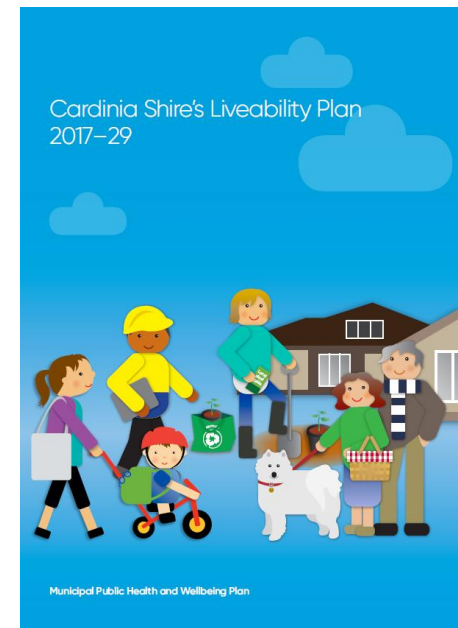
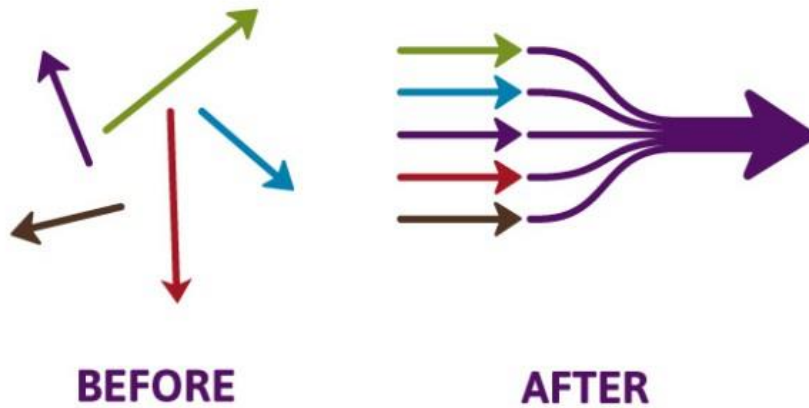
A holistic approach

- Collective impact model
- Whole of council and community approach
- Focus on primary prevention and social determinants of health
- Outcomes focused (long-term, 12 year plan)
- Reflects the Victorian Public Health and Wellbeing Plan & Outcomes Framework
- Aligned to Plan Melbourne 2050
- Aligned to Council Plan & Municipal Strategic Statement (MSS)
- Partner organisation strategic plans



Creating a common agenda

- Internal consultation
- Partnership steering group
- Community engagement



Partnership Commitment

As partner organisations funded to protect, improve and promote community health and wellbeing, we commit to the vision and objectives of Cardinia Shire's Liveability Plan.



Casey
Cardinia
Libraries



VICTORIA POLICE



Kooweerup
REGIONAL HEALTH SERVICE



State
Government

Health
and Human
Services



Windermere[®]
*everyone is someone
in our community*

MonashHealth



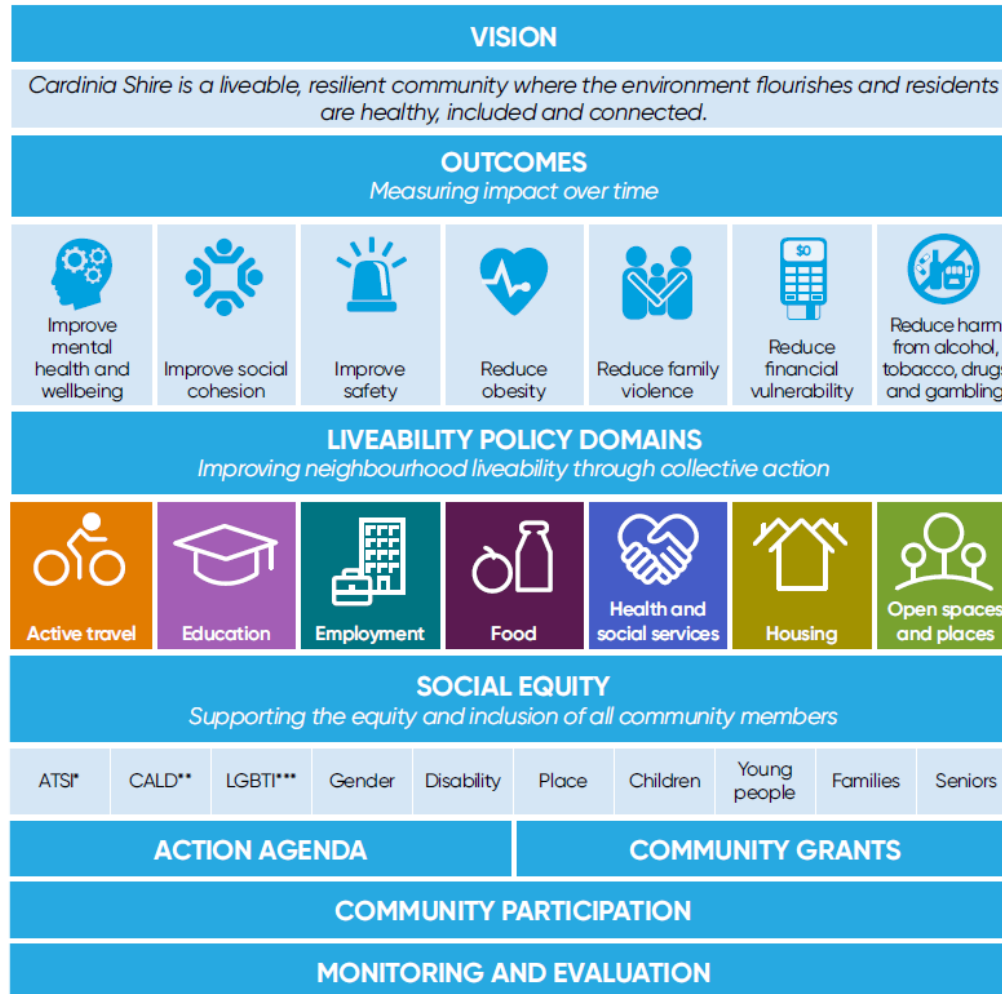
Southern
Migrant & Refugee Centre

SUSTAIN the Australian
food network



Dandenong and District Aboriginal
Cooperative Limited

Our planning framework



Outcomes framework

Short-term (1-4 years)	Medium-term (4-8 years)	Long-term (8-12 years)
<p>Increased advocacy for the liveability outcomes.</p> <p>New or reviewed policies and strategies align to the liveability outcomes.</p> <p>Partnerships are built or strengthened to address the liveability outcomes.</p> <p>The planning, design and construction of infrastructure achieves liveability outcomes.</p> <p>Workforce capacity and capabilities are enhanced to achieve liveability outcomes.</p> <p>Funding and resources are aligned to the liveability outcomes.</p> <p>A shared measurement system is developed to monitor and report on liveability outcomes.</p> <p>Increased communication with partners and the community about the liveability outcomes.</p>	<p>Increased participation in walking and cycling for transport.</p> <p>Increased participation in local education.</p> <p>Increased participation in local employment.</p> <p>Increased access to affordable, nutritious food.</p> <p>Increased access to services and social support.</p> <p>Increased access to appropriate and affordable housing.</p> <p>Increased participation in open spaces and places.</p>	<p>Increased mental health and wellbeing</p> <p>Increased social cohesion</p> <p>Increased safety</p> <p>Decreased obesity</p> <p>Decreased family violence</p> <p>Decreased financial vulnerability</p> <p>Decreased harm from tobacco, alcohol, drugs and gambling</p>

Challenges

- Old ways of thinking and doing things
- Internal politics and change management
- Understanding the bigger picture
- Internal systems (i.e. reporting systems)
- Access to funding
- Action Plan parameters (where does it end?)

Enablers

- Leadership commitment and buy-in
- Interface / growth council
- Access to local data (e.g. social research)
- Existing partnerships and strong relationships
- Organisational culture geared to innovation
- Activity based working

Short-term wins

Guiding vision and strategy	Alignment of partner strategic plans Services for Success
Supporting aligned activities	Action Agenda
Shared measurement practices	Outcomes framework Annual Review
Building public will	Community Summit Community Leadership Program Together We Can Cardinia Food Movement Social and economic impact of EGMs
Advancing policy	Social and Affordable Housing Strategy Community Food Strategy MDAP – Local Service Coordination Pilot
Mobilising funding	Community Wellbeing Support Grants SHIP grant

Aspirations

- Strengthen data collection and measurement practices
- Influence service and infrastructure planning at a neighbourhood level
- Strengthen and expand partnerships for collaboration
- Greater community impact through capacity building and resourcing

Questions?

Pieta Bucello

Healthy Communities Coordinator

P: 03 5943 4392

E: P.Bucello@cardinia.vic.gov.au

Website: www.cardinia.vic.gov.au/healthandwellbeing

Facebook: www.facebook.com/LivingHealthyCardinia