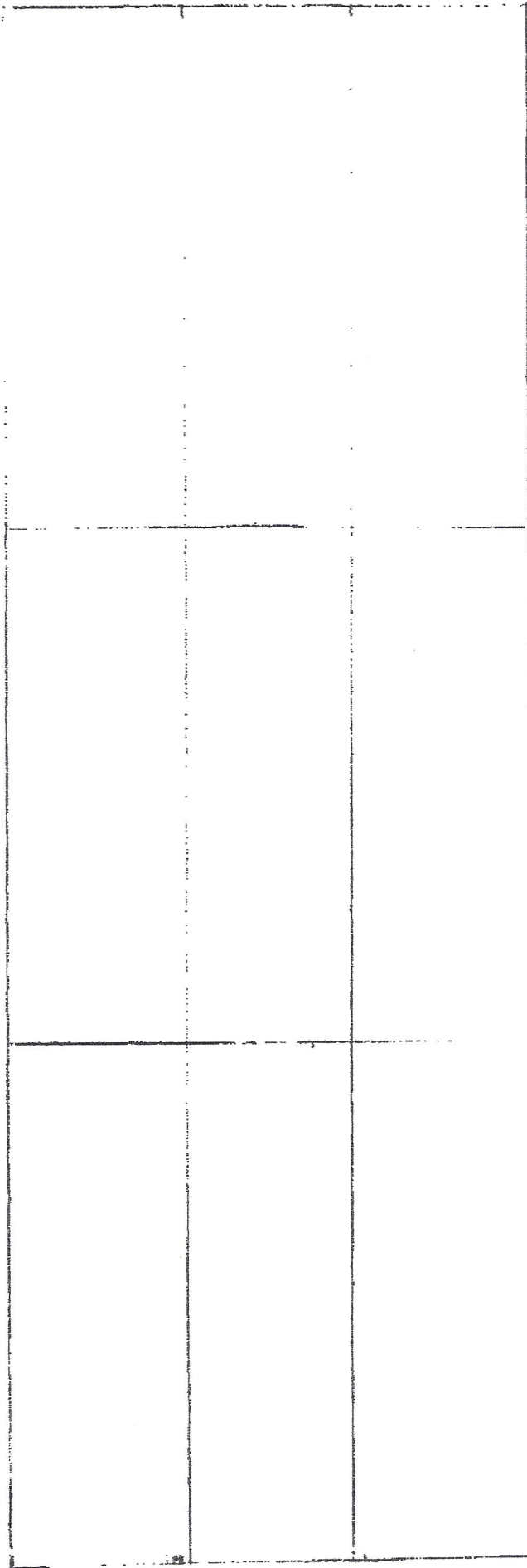


Facility
Building
300' x 900'

Beam
Configuration



Facilities

pg 78

0400

Mat Labor
28 24.50

Total 467 pcs

52.50

467

52.50

\$24,518

467

28

\$13,076

467 pcs Welded Wire Fabric
For Footer and Walls

Facilities

pg 78

0400 Mat Labor Total

28 24.50 52.50

270,000 SF

7500 pcs 7500 pcs
28 52.50

\$210,000

\$393,750

7500 pcs Welded Wire Fabric
Slab

Facilities

Pg 135

0100 2" Angle LF 2400 LF

Mat Labor Equip Total

1.72 3.83 .33 5.88

\$4,28 \$9,192 \$792 \$14,112

2400 LF

2" Angle

Facilities

Pg 136

1200 19,200 LF

Mat Labor Equip Total

11.35 5.25 .45 17.05

\$217,920 \$100,800 \$8,640 \$327,360

6" Channel

Facilities

p9137

0500 Sqft

| Mat | Total |
|------------------|------------------|
| 42 | 42 |
| 840 | 840 |
| <u>\$35,280</u> | <u>\$35,280</u> |
| 5 | 5 |
| <u>\$176,400</u> | <u>\$176,400</u> |

840 sqft @ 1
4200 sqft @ 5

Steel Plate

Facilities

p9138

7502

| Mat | Labor | Equip | Total |
|----------------|-------|-------|----------------|
| 169 | 2.79 | 1.42 | 173.21 |
| 169 | | | 173.21 |
| <u>8</u> | | | <u>8</u> |
| <u>\$1,352</u> | | | <u>\$1,386</u> |

8 pcs

Columns

Facilities

Pg 138

8102

| Mat | Labor | Equip | Total |
|-----------|-------|-------|-----------|
| 340 | 3.16 | 1.61 | 344.77 |
| 340 | | | 344.77 |
| <u>16</u> | | | <u>16</u> |
| \$5,440 | | | \$5,517 |

16 pcs

Beams

Facilities

Pg 138

1102

| Mat | Labor | Equip | Total |
|-------------|-------|-------|-------------|
| 15.80 | 2.57 | 1.76 | 20.13 |
| <u>533'</u> | | | <u>533'</u> |
| \$8,422 | | | \$10,730 |
| <u>5</u> | | | <u>5</u> |
| \$42,110 | | | \$53,650 |

1 @ 533' pcs
5 @ 2,665 pcs

Furnace Beams

Facilities

pg 144

0720 50' Open web Joists

| Mat | Labor | Equip | Total |
|------------|-------|-------|------------|
| 12.30 | 1.36 | .74 | 14.40 |
| <u>50</u> | | | <u>50</u> |
| \$615 | | | \$720 |
| <u>270</u> | | | <u>270</u> |
| \$166,050 | | | \$194,400 |

270 pcs Open web Joists

Facilities

pg 145

3100

| Mat | Labor | Equip | Total |
|----------------|-------|-------|----------------|
| 2.28 | .32 | .03 | 2.63 |
| <u>540,000</u> | | | <u>540,000</u> |
| \$1,231,200 | | | \$1,420,200 |

7200 pcs Roof Decking
For Walls

Facilities
pg 145

3100 SF

| Mat | Labor | Equip | Total |
|----------------|-------|-------|----------------|
| 2.28 | .32 | .03 | 2.63 |
| <u>202,500</u> | | | <u>202,500</u> |
| \$461,700 | | | \$532,575 |

2700 pcs Roof Decking

Facilities
pg 1004

0100 6" Deep SY

| Mat | Labor | Equip | Total |
|---------------|-------|-------|---------------|
| 6.20 | .28 | .58 | 7.06 |
| <u>45,000</u> | | | <u>45,000</u> |
| 6.20 | | | 7.06 |
| \$279,000 | | | \$317,700 |

Aggregate

Concrete

pg 58

0564 CY

| Mat | Total |
|----------------|----------------|
| 380 | 380 |
| <u>320,000</u> | <u>320,000</u> |
| \$121,600,000 | \$121,600,000 |

Footer and Perimeter
Wall

Concrete

pg 58

0564 CY Slab

| Mat | Total |
|----------------|----------------|
| 380 | 380 |
| <u>900,000</u> | <u>900,000</u> |
| \$342,000,000 | \$342,000,000 |

SLAB

Concrete
pg 98

0012 per 1000 Bricks

| Mat | Labor | Total |
|---------------|-------|---------------|
| 1,150 | 890 | 2,040 |
| <u>35,554</u> | | <u>35,554</u> |
| \$40,887,100 | | \$72,530,160 |
| <u>5</u> | | <u>5</u> |
| \$204,435,500 | | \$362,650,800 |

1 @ 35,554
5 @ 177,770

Fire Brick
Walls Only

Addition Hammermill 05/01/2008

Facilities

pg 75

0400

Mat.

28.00

54 pcs

\$ 2,352

Wire Fabric
For Footer
and Walls

Facilities

pg 145

3100

Mat.

50,000 sq. ft.

2.28

\$ 114,000

Roof Decking For walls

Material Total 05/01/2008

Concrete

pg 55

0564 CY

350

389 CY

\$ 147,820

Concrete For
Footer and wall

concrete slab 342,000,000

Fire Brick 2104,435,500

Footer and wall 121,747,820

Roof Decking (walls) 1,345,200

Roof Decking 461,700

Aggregate 279,000

Wire Fabric (slab) 210,000

Steel Plate 176,400

Open web Joists 166,050

Furnace Beams (5 Furnaces) 42,110

Wire Fabric Footer + walls 15,428

Building Beams 5,440

Building Columns 1,352

General Building Material
and Furnace costs only \$670,886,000

07/18/2008

BUGGER & HUND

Revision

Facilities

pg 145

Roof Decking

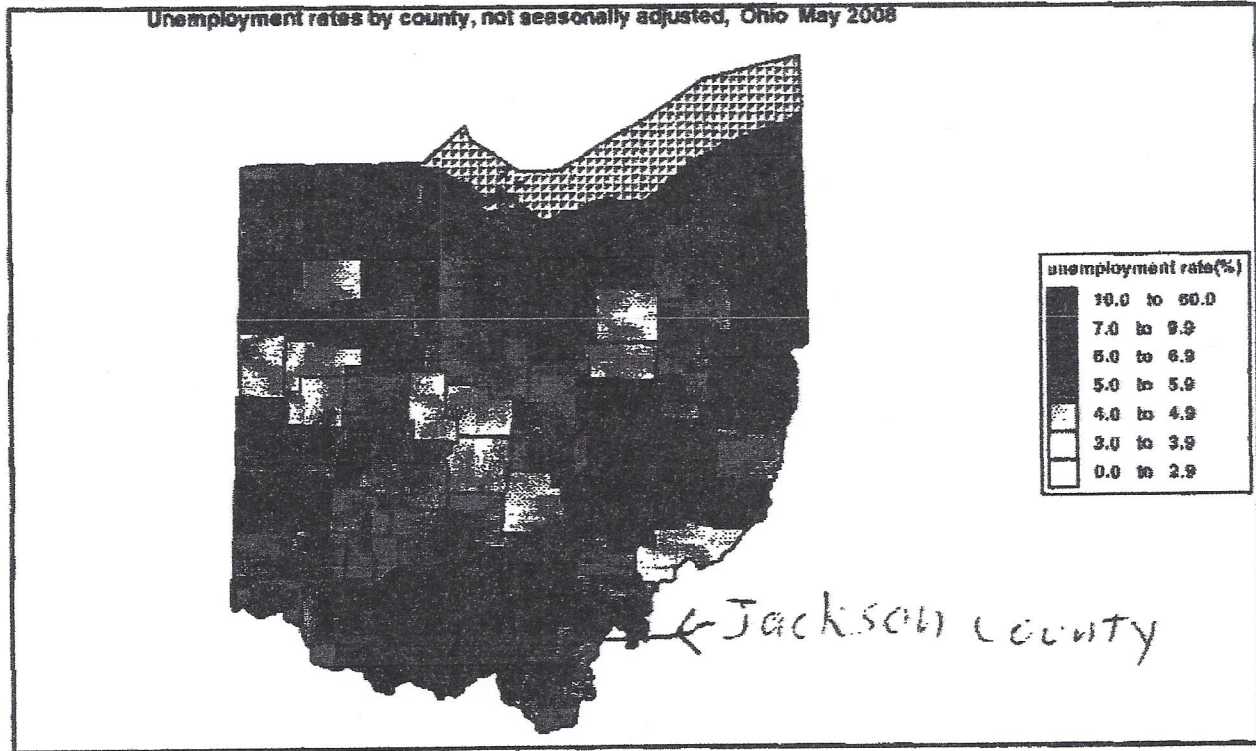
2700 Squares

Roof Decking For walls

2400 Squares

select a state: Ohio
Select dataview type:
 12 Month Net Change
 Unemployment Rate
 Select Year: 2008
Select Month: May

Seasonally Adjusted
 Not Seasonally Adjusted



When you place your cursor on a county, its name will appear along with the statistic for that county.

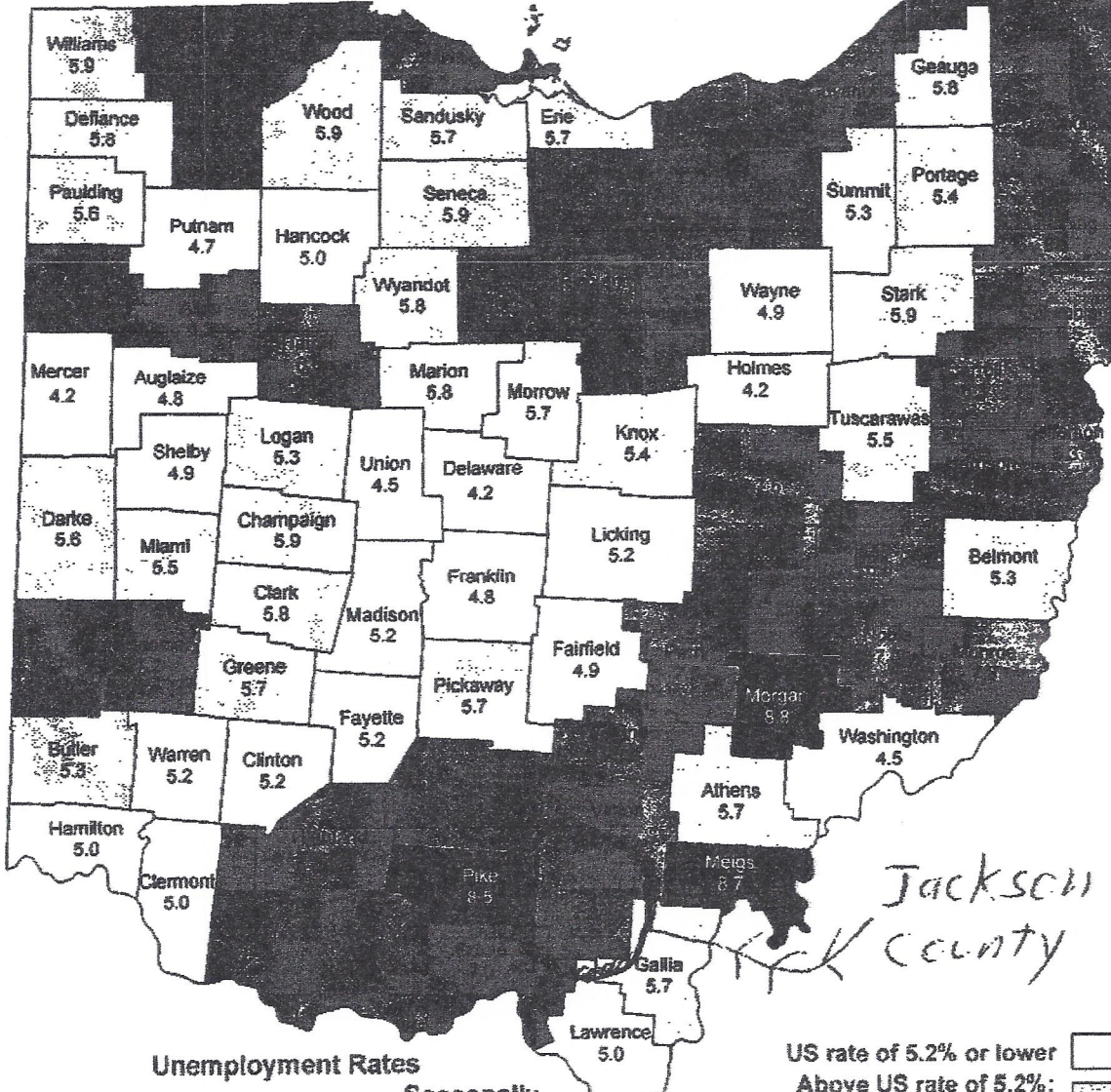
| Map Title: Unemployment rates by county, not seasonally adjusted Map Type: Ohio county Map Month/Year: May/2008 | |
|--|----------|
| County | May 2008 |
| Adams County | 7.5 |
| Allen County | 6.3 |
| Ashland County | 6.2 |
| Ashtabula County | 6.6 |
| Athens County | 5.7 |
| Auglaize County | 4.8 |
| Belmont County | 5.3 |
| Brown County | 6.2 |
| Butler County | 5.3 |

| | |
|-------------------|-----|
| Carroll County | 6.3 |
| Champaign County | 5.9 |
| Clark County | 5.8 |
| Clermont County | 5.0 |
| Clinton County | 5.2 |
| Columbiana County | 6.5 |
| Coshocton County | 7.5 |
| Crawford County | 6.7 |
| Cuyahoga County | 7.6 |
| Darke County | 5.6 |
| Defiance County | 5.8 |
| Delaware County | 4.2 |
| Erie County | 5.7 |
| Fairfield County | 4.9 |
| Fayette County | 5.2 |
| Franklin County | 4.8 |
| Fulton County | 6.6 |
| Gallia County | 5.7 |
| Geauga County | 5.8 |
| Greene County | 5.7 |
| Guernsey County | 6.8 |
| Hamilton County | 5.0 |
| Hancock County | 5.0 |
| Hardin County | 6.0 |
| Harrison County | 6.3 |
| Henry County | 6.6 |
| Highland County | 6.3 |
| Hocking County | 6.5 |
| Holmes County | 4.2 |
| Huron County | 7.3 |
| Jackson County ✓ | 7.2 |
| Jefferson County | 6.3 |
| Knox County | 5.4 |
| Lake County | 6.4 |
| Lawrence County | 5.0 |
| Licking County | 5.2 |
| Logan County | 5.3 |
| Lorain County | 7.1 |
| Lucas County | 6.8 |
| Madison County | 5.2 |
| Mahoning County | 6.3 |
| Marion County | 5.8 |



Civilian Labor Force Estimates May 2008

Office of Workforce Development
Bureau of Labor Market Information



Jackson County

| | | |
|---------------------------|------------|---|
| Unemployment Rates | | US rate of 5.2% or lower Above US rate of 5.2%; Ohio rate of 5.9% or lower Above Ohio rate of 5.9%; below 8.0% 8.0% or above |
| | | |
| | Unadjusted | Seasonally Adjusted |
| United States.. | 5.2% | 5.5% |
| Ohio..... | 5.9% | 6.3% |

Ohio Department of Job and Family Services
 Ted Strickland, Governor
 Helen E Jones-Kelley, Director

Table 1: Annual Estimates of the Population for Counties of Ohio: April 1, 2000 to July 1, 2007

| Geographic Area | Population Estimates | | | | | | |
|-------------------|----------------------|--------------|--------------|--------------|--------------|--------------|--------------|
| | July 1, 2007 | July 1, 2006 | July 1, 2005 | July 1, 2004 | July 1, 2003 | July 1, 2002 | July 1, 2001 |
| Highland County | 42,653 | 42,553 | 42,152 | 42,290 | 41,781 | 41,552 | 41,146 |
| Hocking County | 28,959 | 28,708 | 28,763 | 28,722 | 28,634 | 28,530 | 28,376 |
| Holmes County | 41,369 | 41,408 | 41,272 | 41,091 | 40,628 | 40,347 | 39,744 |
| Huron County | 59,801 | 59,865 | 59,946 | 59,875 | 59,821 | 59,850 | 59,570 |
| Jackson County | 33,314 | 33,230 | 33,322 | 33,100 | 32,935 | 32,904 | 32,708 |
| Jefferson County | 68,730 | 69,409 | 70,145 | 70,887 | 71,426 | 71,980 | 72,807 |
| Knox County | 58,961 | 58,457 | 58,050 | 57,521 | 56,859 | 56,150 | 55,375 |
| Lake County | 233,392 | 232,563 | 232,212 | 232,175 | 231,231 | 230,632 | 229,298 |
| Lawrence County | 62,609 | 62,666 | 62,493 | 62,191 | 62,202 | 61,884 | 61,992 |
| Licking County | 156,985 | 155,422 | 154,101 | 152,229 | 150,266 | 148,492 | 147,347 |
| Logan County | 46,279 | 46,104 | 46,327 | 46,469 | 46,423 | 46,233 | 45,954 |
| Lorain County | 302,260 | 300,727 | 298,990 | 295,410 | 293,061 | 289,248 | 286,829 |
| Lucas County | 441,910 | 444,230 | 446,970 | 449,464 | 452,306 | 453,468 | 454,489 |
| Madison County | 41,499 | 41,052 | 40,852 | 40,774 | 40,623 | 40,383 | 40,191 |
| Mahoning County | 240,420 | 243,612 | 245,834 | 248,309 | 250,490 | 252,276 | 254,871 |
| Marion County | 65,248 | 65,486 | 65,768 | 65,780 | 65,929 | 65,897 | 66,007 |
| Medina County | 169,832 | 168,034 | 165,812 | 163,764 | 160,840 | 157,956 | 154,641 |
| Meigs County | 22,895 | 22,940 | 23,092 | 23,115 | 23,146 | 23,118 | 23,027 |
| Mercer County | 40,888 | 40,830 | 40,795 | 40,760 | 40,735 | 40,792 | 40,795 |
| Miami County | 101,038 | 100,955 | 100,678 | 100,077 | 99,565 | 99,242 | 99,110 |
| Monroe County | 14,258 | 14,368 | 14,564 | 14,807 | 14,813 | 14,853 | 15,028 |
| Montgomery County | 538,104 | 541,320 | 545,082 | 548,197 | 550,719 | 552,550 | 555,109 |
| Morgan County | 14,613 | 14,649 | 14,727 | 14,728 | 14,677 | 14,684 | 14,794 |
| Morrow County | 34,520 | 34,214 | 34,053 | 33,854 | 33,390 | 32,880 | 32,395 |
| Muskingum County | 85,333 | 85,500 | 85,208 | 85,213 | 85,132 | 85,103 | 84,706 |
| Noble County | 14,096 | 14,144 | 14,002 | 14,179 | 14,095 | 13,961 | 13,936 |
| Ottawa County | 41,084 | 41,203 | 41,308 | 41,311 | 41,136 | 40,920 | 40,973 |
| Paulding County | 19,182 | 19,280 | 19,425 | 19,496 | 19,649 | 19,817 | 20,093 |
| Perry County | 34,839 | 34,837 | 34,821 | 34,778 | 34,684 | 34,472 | 34,304 |
| Pickaway County | 53,809 | 53,202 | 52,415 | 51,800 | 51,660 | 51,568 | 52,268 |
| Pike County | 27,918 | 27,981 | 27,807 | 28,046 | 27,978 | 27,914 | 27,760 |
| Portage County | 155,869 | 155,044 | 155,206 | 154,964 | 154,565 | 153,758 | 153,053 |
| Preble County | 41,739 | 41,908 | 41,910 | 42,075 | 42,222 | 42,324 | 42,285 |
| Putnam County | 34,635 | 34,649 | 34,670 | 34,592 | 34,693 | 34,620 | 34,742 |
| Richland County | 125,679 | 126,390 | 127,038 | 127,537 | 127,877 | 128,101 | 128,019 |
| Ross County | 75,398 | 75,155 | 74,858 | 74,370 | 74,331 | 73,915 | 73,597 |

Table 1: Annual Estimates of the Population for Counties of Ohio: April 1, 2000 to July 1, 2007

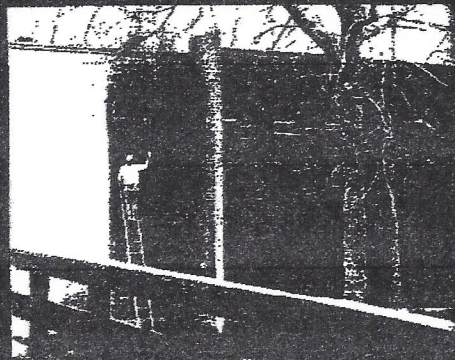
| Geographic Area | April 1, 2000 | | |
|-------------------|---------------|----------------|---------------|
| | July 1, 2000 | Estimates Base | |
| Highland County | 41,020 | 40,875 | Census 40,875 |
| Hocking County | 28,242 | 28,241 | 28,241 |
| Holmes County | 39,055 | 38,943 | 38,943 |
| Huron County | 59,577 | 59,487 | 59,487 |
| Jackson County | 32,643 | 32,641 | 32,641 |
| Jefferson County | 73,639 | 73,894 | 73,894 |
| Knox County | 54,643 | 54,503 | 54,500 |
| Lake County | 227,663 | 227,511 | 227,511 |
| Lawrence County | 62,250 | 62,319 | 62,319 |
| Licking County | 146,072 | 145,625 | 145,491 |
| Logan County | 46,018 | 46,005 | 46,005 |
| Lorain County | 285,141 | 284,664 | 284,664 |
| Lucas County | 454,888 | 455,054 | 455,054 |
| Madison County | 40,216 | 40,216 | 40,213 |
| Mahoning County | 257,041 | 257,555 | 257,555 |
| Marion County | 66,148 | 66,209 | 66,217 |
| Medina County | 151,839 | 151,095 | 151,095 |
| Meigs County | 23,029 | 23,072 | 23,072 |
| Mercer County | 40,909 | 40,924 | 40,924 |
| Miami County | 98,972 | 98,868 | 98,868 |
| Monroe County | 15,168 | 15,180 | 15,180 |
| Montgomery County | 558,533 | 559,062 | 559,062 |
| Morgan County | 14,876 | 14,897 | 14,897 |
| Morrow County | 31,795 | 31,628 | 31,628 |
| Muskingum County | 84,712 | 84,585 | 84,585 |
| Noble County | 14,101 | 14,058 | 14,058 |
| Ottawa County | 41,003 | 40,985 | 40,985 |
| Paulding County | 20,234 | 20,293 | 20,293 |
| Perry County | 34,116 | 34,074 | 34,078 |
| Pickaway County | 52,817 | 52,727 | 52,727 |
| Pike County | 27,742 | 27,695 | 27,695 |
| Portage County | 152,387 | 152,061 | 152,061 |
| Preble County | 42,363 | 42,337 | 42,337 |
| Putnam County | 34,760 | 34,726 | 34,726 |
| Richland County | 128,801 | 128,852 | 128,852 |
| Ross County | 73,450 | 73,345 | 73,345 |

RSMMeans

Facilities Construction Cost Data

22nd Annual Edition

2007

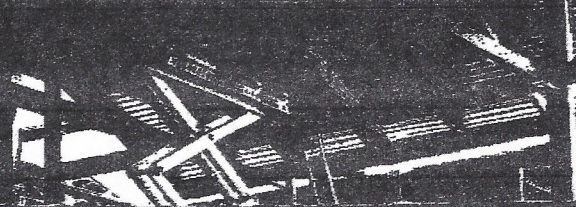


M
H
R

CUYAHOGA COUNTY PUBLIC LIBRARY



1221376435



03 21 Reinforcing Steel

Uncoated Reinforcing Steel

| 03 21 16.10 Epoxy-Coated Reinforcing | | Crew | Daily Output | Labor-Hours | Unit | Material | 2007 Bare Costs | | Total | Total Incl O&P |
|--------------------------------------|---------------------------------|------|--------------|-------------|------|----------|-----------------|-----------|-------|----------------|
| | | | | | | | Labor | Equipment | | |
| 0010 | EPOXY-COATED REINFORCING | | | | | | | | | |
| 0100 | Epoxy coated, A775 | | | | Ton | 380 | | | 380 | 420 |

03 22 Welded Wire Fabric Reinforcing

Uncoated Welded Wire Fabric

03 22 05.50 Welded Wire Fabric

| 0010 WELDED WIRE FABRIC ASTM A185 | | Crew | Daily Output | Labor-Hours | Unit | Material | 2007 Bare Costs | | Total | Total Incl O&P |
|-----------------------------------|--|--------|--------------|-------------|--------|----------|-----------------|-----------|--------|----------------|
| | | | | | | | Labor | Equipment | | |
| 0050 | Sheets | | | | | | | | | |
| 0100 | 6 x 6 - W1.4 x W1.4 (10 x 10) 21 lb. per C.S.F. | 2 Rodm | 35 | .457 | C.S.F. | 12.75 | 18.90 | | 31.65 | 46.50 |
| 0200 | 6 x 6 - W2.1 x W2.1 (8 x 8) 30 lb. per C.S.F. | | 31 | .516 | | 15.40 | 21.50 | | 36.90 | 53.50 |
| 0300 | 6 x 6 - W2.9 x W2.9 (6 x 6) 42 lb. per C.S.F. | | 29 | .552 | | 19.80 | 23 | | 42.80 | 61 |
| 0400 | 6 x 6 - W4 x W4 (4 x 4) 58 lb. per C.S.F. | | 27 | .593 | | 28 | 24.50 | | 52.50 | 72.50 |
| 0500 | 4 x 4 - W1.4 x W1.4 (10 x 10) 31 lb. per C.S.F. | | 31 | .516 | | 18.45 | 21.50 | | 39.95 | 57 |
| 0600 | 4 x 4 - W2.1 x W2.1 (8 x 8) 44 lb. per C.S.F. | | 29 | .552 | | 23.50 | 23 | | 46.50 | 64.50 |
| 0650 | 4 x 4 - W2.9 x W2.9 (6 x 6) 61 lb. per C.S.F. | | 27 | .593 | | 34 | 24.50 | | 58.50 | 79 |
| 0700 | 4 x 4 - W4 x W4 (4 x 4) 85 lb. per C.S.F. | | 25 | .640 | | 44 | 26.50 | | 70.50 | 93.50 |
| 0750 | Rolls | | | | | | | | | |
| 0800 | 2 x 2 - #14 galv., 21 lb./C.S.F., beam & column wrap | 2 Rodm | 6.50 | 2.462 | C.S.F. | 31.50 | 102 | | 133.50 | 209 |
| 0900 | 2 x 2 - #12 galv. for gunite reinforcing | " | 6.50 | 2.462 | " | 37.50 | 102 | | 139.50 | 216 |
| 9000 | Minimum labor/equipment charge | 1 Rodm | 4 | 2 | Job | | 82.50 | | 82.50 | 141 |

03 23 Stressing Tendons

03 Stressing Tendons

03 23 05.50 Prestressing Steel

| 0010 PRESTRESSING STEEL | | Crew | Daily Output | Labor-Hours | Unit | Material | 2007 Bare Costs | | Total | Total Incl O&P |
|-------------------------|--|------|--------------|-------------|------|----------|-----------------|-----------|-------|----------------|
| | | | | | | | Labor | Equipment | | |
| 0100 | Grouted strand, post-tensioned in field, 50' span, 100 kip | C-3 | 1200 | .053 | Lb. | 1.98 | 2.02 | .08 | 4.08 | 5.65 |
| 0150 | 300 kip | | 2700 | .024 | | .87 | .90 | .04 | 1.81 | 2.50 |
| 0300 | 100' span, 100 kip | | 1700 | .038 | | 1.98 | 1.43 | .06 | 3.47 | 4.64 |
| 0350 | 300 kip | | 3200 | .020 | | 1.71 | .76 | .03 | 2.50 | 3.19 |
| 0500 | 200' span, 100 kip | | 2700 | .024 | | 1.98 | .90 | .04 | 2.92 | 3.73 |
| 0550 | 300 kip | | 3500 | .018 | | 1.71 | .69 | .03 | 2.43 | 3.08 |
| 0800 | Grouted bars, 50' span, 42 kip | | 2600 | .025 | | .86 | .93 | .04 | 1.83 | 2.56 |
| 0850 | 143 kip | | 3200 | .020 | | .83 | .76 | .03 | 1.62 | 2.22 |
| 1000 | 75' span, 42 kip | | 3200 | .020 | | .88 | .76 | .03 | 1.67 | 2.27 |
| 1050 | 143 kip | | 4200 | .015 | | .75 | .58 | .02 | 1.35 | 1.82 |
| 1200 | Ungroated strand, 50' span, 100 kip | C-4 | 1275 | .025 | | .49 | 1.05 | .02 | 1.56 | 2.35 |
| 1250 | 300 kip | | 1475 | .022 | | .49 | .91 | .02 | 1.42 | 2.11 |
| 1400 | 100' span, 100 kip | | 1500 | .021 | | .49 | .89 | .02 | 1.40 | 2.09 |
| 1450 | 300 kip | | 1650 | .019 | | .49 | .81 | .01 | 1.31 | 1.95 |
| 1600 | 200' span, 100 kip | | 1500 | .021 | | .49 | .89 | .02 | 1.40 | 2.09 |
| 1650 | 300 kip | | 1700 | .019 | | .49 | .79 | .01 | 1.29 | 1.91 |
| 1800 | Ungroated bars, 50' span, 42 kip | | 1400 | .023 | | .45 | .96 | .02 | 1.43 | 2.14 |
| 1850 | 143 kip | | 1700 | .019 | | .45 | .79 | .01 | 1.25 | 1.86 |
| 2000 | 75' span, 42 kip | | 1800 | .018 | | .45 | .74 | .01 | 1.20 | 1.78 |
| 2050 | 143 kip | | 2200 | .015 | | .45 | .61 | .01 | 1.07 | 1.54 |
| 2220 | Ungroated single strand, 100' slab, 25 kip | | 1200 | .027 | | .49 | 1.11 | .02 | 1.62 | 2.47 |
| 2250 | 35 kip | | 1475 | .022 | | .49 | .91 | .02 | 1.42 | 2.11 |

05 12 Structural Steel Framing

STEEL FRAMING OF BUILDINGS

Total
Ind C/P
6
1
7.5
2
2
2
11.5
10.7
10.8
62
6
292
25
23.9
5
825
845
162
325
122
480
380
125
395
10
11.5
27
44
45.5
49
55
70.50
71
27
1.79

05 12 23.17 Columns, Structural

| | Crew | Daily Output | Labor Hours | Unit | Material | 2007 Bare Costs | | Total | Total Ind C/P |
|---|--------|--------------|-------------|------|----------|-----------------|-----------|----------|---------------|
| | | | | | | Labor | Equipment | | |
| 1500 Steel pipe, extra strong, no concrete, 3" to 5" diameter | E-2 | 16000 | .004 | Lb. | 1.03 | .14 | .10 | 1.27 | 1.49 |
| 1600 6" to 12" diameter | | 14000 | .004 | ↓ | 1.03 | .16 | .11 | 1.30 | 1.54 |
| 1700 Steel pipe, extra strong, no concrete, 3" diameter x 12'-0" | | 60 | .933 | Ea. | 126 | 37.50 | 26 | 189.50 | 236 |
| 1750 4" diameter x 12'-0" | | 58 | .966 | | 184 | 39 | 26.50 | 249.50 | 305 |
| 1800 6" diameter x 12'-0" | | 54 | 1.037 | | 350 | 42 | 28.50 | 420.50 | 490 |
| 1850 8" diameter x 14'-0" | | 50 | 1.120 | | 625 | 45 | 31 | 701 | 800 |
| 1900 10" diameter x 16'-0" | | 48 | 1.167 | | 900 | 47 | 32 | 979 | 1,100 |
| 1950 12" diameter x 18'-0" | | 45 | 1.244 | ↓ | 1,200 | 50 | 34.50 | 1,284.50 | 1,450 |
| 3300 Structural tubing, square, A500GrB, 4" to 6" square, light section | | 11270 | .005 | Lb. | 1.03 | .20 | .14 | 1.37 | 1.64 |
| 3600 Heavy section | ↓ | 32000 | .002 | " | 1.03 | .07 | .05 | 1.15 | 1.31 |
| 4000 Concrete filled, add | | | | L.F. | 4.02 | | | 4.02 | 4.42 |
| 4500 Structural tubing, sq, 4" x 4" x 1/4" x 12'-0" | E-2 | 58 | .966 | Ea. | 169 | 39 | 26.50 | 234.50 | 286 |
| 4550 6" x 6" x 1/4" x 12'-0" | | 54 | 1.037 | | 277 | 42 | 28.50 | 347.50 | 410 |
| 4600 8" x 8" x 3/8" x 14'-0" | | 50 | 1.120 | | 600 | 45 | 31 | 676 | 775 |
| 4650 10" x 10" x 1/2" x 16'-0" | | 48 | 1.167 | ↓ | 1,100 | 47 | 32 | 1,179 | 1,350 |
| 5100 Structural tubing, rect, 5" to 6" wide, light section | | 8000 | .007 | Lb. | 1.03 | .28 | .19 | 1.50 | 1.85 |
| 5200 Heavy section | | 12000 | .005 | | 1.03 | .19 | .13 | 1.35 | 1.61 |
| 5300 7" to 10" wide, light section | | 15000 | .004 | | 1.03 | .15 | .10 | 1.28 | 1.51 |
| 5400 Heavy section | | 18000 | .003 | ↓ | 1.03 | .13 | .09 | 1.25 | 1.45 |
| 5500 Structural tubing, rect, 5" x 3" x 1/4" x 12'-0" | | 58 | .966 | Ea. | 164 | 39 | 26.50 | 229.50 | 280 |
| 5550 6" x 4" x 5/16" x 12'-0" | | 54 | 1.037 | | 256 | 42 | 28.50 | 326.50 | 390 |
| 5600 8" x 4" x 3/8" x 12'-0" | | 54 | 1.037 | | 375 | 42 | 28.50 | 445.50 | 515 |
| 5650 10" x 6" x 3/8" x 14'-0" | | 50 | 1.120 | | 600 | 45 | 31 | 676 | 775 |
| 5700 12" x 8" x 1/2" x 16'-0" | | 48 | 1.167 | ↓ | 1,100 | 47 | 32 | 1,179 | 1,350 |
| 6800 W Shape, A992 steel, 2 tier, W8 x 24 | | 1080 | .052 | L.F. | 27 | 2.09 | 1.43 | 30.52 | 35.50 |
| 6850 W8 x 31 | | 1080 | .052 | | 35 | 2.09 | 1.43 | 38.52 | 44 |
| 6900 W8 x 48 | | 1032 | .054 | | 54 | 2.19 | 1.50 | 57.69 | 65 |
| 6950 W8 x 67 | | 984 | .057 | | 75.50 | 2.30 | 1.57 | 79.37 | 89 |
| 7000 W10 x 45 | | 1032 | .054 | | 50.50 | 2.19 | 1.50 | 54.19 | 61.50 |
| 7050 W10 x 68 | | 984 | .057 | | 76.50 | 2.30 | 1.57 | 80.37 | 90.50 |
| 7100 W10 x 112 | | 960 | .058 | | 126 | 2.35 | 1.61 | 129.96 | 145 |
| 7150 W12 x 50 | | 1032 | .054 | | 56.50 | 2.19 | 1.50 | 60.19 | 67.50 |
| 7200 W12 x 87 | | 984 | .057 | | 98 | 2.30 | 1.57 | 101.87 | 114 |
| 7250 W12 x 120 | | 960 | .058 | | 135 | 2.35 | 1.61 | 138.96 | 155 |
| 7300 W12 x 190 | | 912 | .061 | | 214 | 2.48 | 1.70 | 218.18 | 242 |
| 7350 W14 x 74 | | 984 | .057 | | 83.50 | 2.30 | 1.57 | 87.37 | 98 |
| 7400 W14 x 120 | | 960 | .058 | | 135 | 2.35 | 1.61 | 138.96 | 155 |
| 7450 W14 x 176 | | 912 | .061 | ↓ | 198 | 2.48 | 1.70 | 202.18 | 224 |
| 8090 For projects 75 to 99 tons, add | | | | AM | 10% | | | | |
| 8092 50 to 74 tons, add | | | | | 20% | | | | |
| 8094 25 to 49 tons, add | | | | | 30% | 10% | | | |
| 8096 10 to 24 tons, add | | | | | 50% | 25% | | | |
| 8098 2 to 9 tons, add | | | | | 75% | 50% | | | |
| 8099 Less than 2 tons, add | | | | ↓ | 100% | 100% | | | |
| 9000 Minimum labor/equipment charge | 1 Sswk | 1 | 8 | Job | | 330 | | 330 | 620 |

05 12 23.20 Curb Edging

| | Crew | Daily Output | Labor Hours | Unit | Material | Labor | Equipment | Total | Total Ind C/P |
|--|------|--------------|-------------|------|----------|-------|-----------|-------|---------------|
| 0010 CURB EDGING | E-4 | 350 | .091 | L.F. | 1.72 | 3.83 | .33 | 5.88 | 9.45 |
| 0020 Steel angle w/anchors, on forms, 1" x 1", 0.8#/L.F. | | 330 | .097 | | 5.55 | 4.06 | .35 | 9.96 | 14.15 |
| 0100 2" x 2" angles, 3.92#/L.F. | | 300 | .107 | | 8.80 | 4.46 | .38 | 13.64 | 18.45 |
| 0200 3" x 3" angles, 6.1#/L.F. | | 275 | .116 | | 11.35 | 4.87 | .42 | 16.64 | 22 |
| 0300 4" x 4" angles, 8.2#/L.F. | | 250 | .128 | | 16.40 | 5.35 | .46 | 22.21 | 28.50 |