

# RED DEER LAKE MEAT PROCESSING LTD.

Located a short, pleasant drive south of Calgary, west of Spruce Meadows

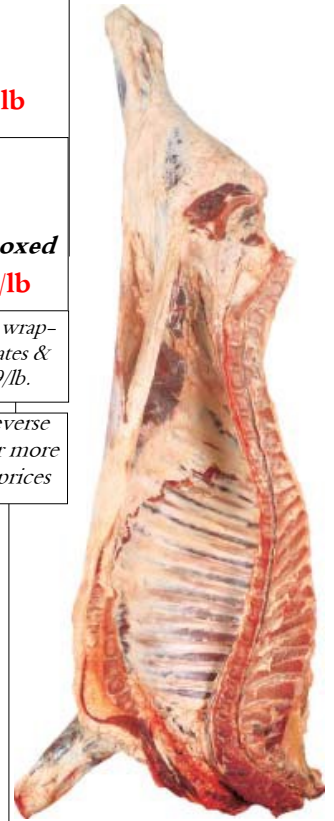
Serving Southern Alberta since 1974

Specializing in Custom Slaughter and locally produced Beef, Lamb, & Pork

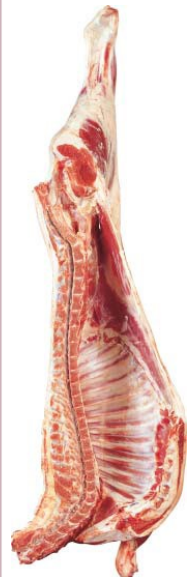
## Featuring Local Alberta Beef & Lamb



<p align="center"><b>WHOLE SIDE OF BEEF</b>  <i>Cut From 100% Genuine Local Alberta Dry aged Beef.</i>                  1 Hind &amp; 1 Front (Avg. 250-300 lbs.)  <b>Cut, Wrapped, Frozen &amp; Boxed \$5.79/lb.; Uncut \$5.19/lb</b></p>	
<p align="center"><b>FRONT OF BEEF</b>                  Rib, Chuck, &amp; Brisket                  (Avg. 130-160 lbs.)  <b>Cut, Wrapped, Frozen &amp; Boxed \$5.59/lb. Uncut \$4.99/lb</b></p>	<p align="center"><b>HIND OF BEEF</b>                  Hip, Long Loin, &amp; Flank                  (Avg. 110-140 lbs.)  <b>Cut, Wrapped, Frozen &amp; Boxed \$6.09/lb. Uncut \$5.49/lb</b></p>
<p><i>Price is based on weight before cutting. Price includes cutting, Brown paper freezer wrapping, boxing, and freezing. Custom Beef slaughter also available. Call for current rates &amp; slaughter booking. Custom Beef Slaughter is \$130.00/head; cut &amp; wrap cost: 0.99/lb.</i></p>	

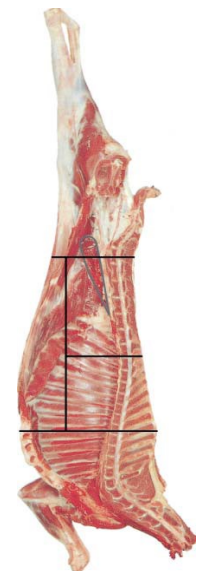


<p><b>UNCUT BEEF PRIMALS</b></p>		<p align="center">See reverse side for more retail prices</p>
<p><b>BEEF HIP-Bone in Whole \$4.99/lb.</b></p>		
<p><b>Top( Inside) Round -Whole Bnls \$8.79/lb.</b></p>		
<p><b>Bottom( Outside) Round -Whole Bnls \$8.29/lb.</b></p>		
<p><b>Sirloin Tip -Whole Bnls \$8.79/lb.</b></p>		
<p><b>Whole Blade (chuck)-Bone in uncut \$6.59/lb.</b></p>		
<p><b>Cross Rib-Bone In Whole uncut \$7.29/lb.</b></p>		
<p><b>Brisket Plate-Bone In Whole uncut \$5.19/lb.</b></p>		
<p><b>Top Sirloin Butt -Bnls Whole Uncut \$10.99/lb.</b></p>		
<p><b>Strip Loin -Bnls Whole Uncut \$19.24/lb.</b></p>		



Alberta Lamb

<p><b>ALBERTA LAMB</b> *Subject to availability                  Average Carcass Weight : 45-70 lbs;                  Cut, Wrapped, Frozen &amp; Boxed  <b>Carcass-\$9.99/lb. Side \$10.49/lb.</b></p>	<p><b>*CARCASS OF GOAT</b>                  Average Weight : 25-40 lbs;                  Cut, Wrapped, Frozen &amp; Boxed  <b>\$14.00/lb.</b> *Subject to availability</p>
<p><b>CARCASS OF LAMB</b>                  Uncut; Market Weight (45-70 lbs)  <b>\$9.49/lb.</b> *Subject to availability</p>	<p><b>*SIDE OF GOAT</b>                  Avg. Weight : 13-20 lbs.                  Cut, Wrapped, Frozen &amp; Boxed  <b>\$15.49/lb.</b> *Subject to availability</p>
<p><b>*LAMB CUTS</b> *Subject to availability                  Whole Leg Bone In-\$17.69/lb. Side Ribs-\$9.99/lb.                  Loin Chops-\$28.50/lb. Whole Rack-\$25.50/lb.                  Whole Shoulder Roast-Bone In-\$14.49/lb.                  Shoulder Chops-\$14.99/lb. Whole Shank-\$9.99/lb.                  Boneless Stew-\$15.99/lb. Ground Lamb-\$12.99/lb.</p>	<p><b>*CARCASS OF LAMB</b>                  Uncut; Head On Spring Lamb;                  Under 30 lbs  <b>\$14.50/lb.</b> *Subject to availability</p>



Alberta Goat



**Main Plant Address**

90093 226 Ave West  
 Foothills, AB. T1S 2Z2

Ph.-403-256-4925  
 Fax: 403-256-8882  
 Email: info@rdlmeats.ab.ca  
 Website www.rdlmeats.ab.ca



\*Please Call 403-256-4925 to place an order.  
 \*Prices in effect until: **December 31/2024**  
 Prices are subject to change. Please Call to verify.  
 All our Products are from Guaranteed Natural Local  
 Alberta Government Inspected Livestock