

## HEALTH SYSTEM NEWS ROUNDUP



### Welcome to the new Roundup!

It's not a mirage – this issue of the *Health System News Roundup* has a new look and feel! In the nearly six years that we've been bringing you this Friday publication, it's gone through a few transformations. This latest iteration brings a refreshed design built on a new platform.

But our mission with this digest remains the same: to keep you informed, connected, and aligned with the priorities of our clinical enterprise.

Each issue, we aim for a healthy mix of need-to-know operational updates, event highlights, celebrations and recognitions, and occasional spotlights on you and your colleagues.

We hope we've been delivering on our goals, and we thank you for reading and engaging with us, both in the *Roundup* and on the Health System's Huddle platform.

If there's anything you want to see more of, let us know by sending the Health System Comms team an email.

Note: We want you to have the full *Roundup* experience and for our emails to look their best when they drop into your inbox. If you're having trouble viewing any images or content, please add our email address to your "safe senders" list. That way, everything in the *Roundup* will display automatically.

Need help? Click the button below for a quick guide.

[Safe sender instructions](#)



### Briefing update video: Measles, Spine Center, and market-based compensation adjustments

The March briefing for Health System managers and directors is [available to view on Huddle](#). Jonathan Efron, M.D., Executive Vice President for Health System Affairs, led the Thursday briefing, and additional updates were provided by:

**Shivani Patel, M.D., M.B.A.**, Patient Safety Officer

**DuWayne L. Willett, M.D., M.S.**, Chief Health Informatics Officer

**Priya Dandekar, M.H.A., M.B.A.**, Associate Vice President, Neuroscience Clinical Programs

**Andrew Simpson, M.D., M.B.A.**, Director of the Spine Center, Chief of Spine

### Operational news

Dr. Efron announced a new **Imaging Center** located at UT Southwestern Monty and Tex Moncrief Medical Center at Fort Worth; the first patient day is slated for March 31. This addition is part of a larger Imaging Services expansion to provide more access to patients across North Texas. Dr. Efron also shared details on two **recently concluded survey visits** by The Joint Commission: the Comprehensive Cardiac Center Certification survey and our Comprehensive Stroke Center Recertification. While we are still awaiting final results, the surveyors were extremely complimentary of both programs.

Dr. Efron also noted that in late February, he hosted a **Rededication to Clinical Excellence Summit** for clinical chairs, center directors, and additional clinical leaders, among others, to discuss areas of opportunity. Moving forward, we will be focusing heavily on improving access to care, reducing administrative burden by leveraging technology systems, and expanding clinical trials.

### Measles surveillance

This week we launched an update to our travel and pre-check-in questionnaire to assess whether patients are at risk for measles. Patients can complete the screening – which includes questions about new or worsening fever or rash – during their pre-check-in, upon arrival to their outpatient appointment, or during hospital registration.

More details on the Epic update, including a Measles Positive Prescreen Workflow document and masking guidelines, are available [on Huddle](#) along with several [other measles resources](#).

### Spine Center updates

The Spine Center was launched in 2017 to provide excellence in spine care, bringing together four departments under one governance structure, a clinical operations structure, and a financial model. It now has 14 faculty, eight advanced practice providers, and ambulatory staff across five locations, caring for 33,000 patients on average annually and performing over 6,000 combined procedures and surgeries.

**Dr. Simpson**, the new Director of the Spine Center, discussed the need for the Center to evolve in order to elevate its reputation both regionally and nationally to meet the needs of a growing patient population.

### Market-based compensation adjustments

As a follow-up to a campus communication earlier this month, it was shared that on Monday, March 17, department leaders will receive a list of any employees on their team receiving a market-based compensation adjustment. This is part of UTSW's annual compensation program to ensure we remain competitive within the market. Not all positions qualify for a market adjustment during this cycle. Market adjustments are one part of UT Southwestern's two-part compensation program, which also includes performance-based merit adjustments. UTSW will review market data in the next annual cycle. However, funding market adjustments for future years will be contingent on our institutional financial performance, just as it was this year.

[Watch the video](#)



## 20 UTSW RNs win *D Magazine* Excellence in Nursing Awards

Last week, we had the pleasure of celebrating 22 of our RNs being inducted into the [DFW Great 100 Nurses](#). This week, we are excited to share more great news as 20 of our outstanding nurses have been recognized as recipients of *D Magazine's* 2025 Excellence in Nursing Awards.

Each year, the publication recognizes nurses in the Dallas-Fort Worth metroplex for their career achievements and for making a difference in the lives of our patients and colleagues. Nominations come from community members, peers, and patients. The recipients are celebrated at an annual dinner hosted by *D Magazine*. A copy of the print issue is now on newsstands.

Check out who made the list on Huddle with the link below and congratulate these amazing RNs!

Stay tuned for an upcoming feature on *Center Times Plus* to learn more about this year's honorees.

[View the winners](#)



### Child Life Specialists heal the whole family

When an adult is hospitalized with a serious illness, the situation can also be traumatic for their children or grandchildren who may be filled with anxiety or fear about their loved one's condition.

Enter UT Southwestern's team of Certified Child Life Specialists: **Kelsi Hildreth, M.S., CCLS**, **Maddy Kroll, M.S., CCLS**, and **Erica Smith, M.S., CCLS** (pictured above from left to right), key players in our commitment to comprehensive care.

It's their mission to help guide the children through such challenges, using education, play, and a variety of therapeutic interventions to prepare kids to visit the hospital or the patient's bedside. They:

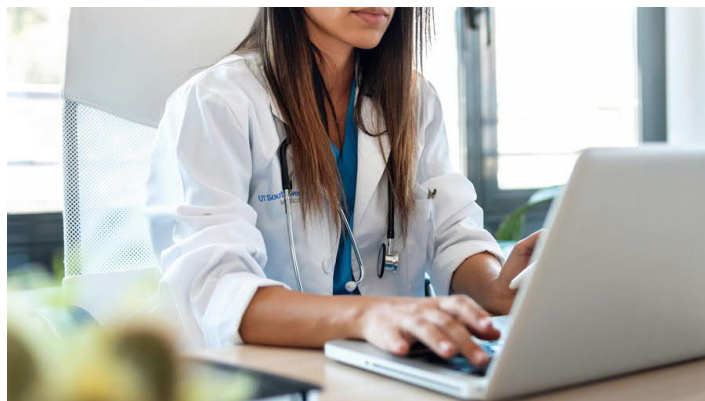
- Engage children in activities that help develop their coping and self-expression skills while fostering a greater understanding of their loved one's illness.

- Facilitate the creation of legacy-building and memory-making items in end-of-life or hospice situations.

- Navigate UTSW hospital patients younger than 18, helping to educate them about their illness, advocating on their behalf, and facilitating positive pain management strategies.

March is Child Life Month, so we want to thank these remarkable professionals. Click below to watch the day-in-the-life video and learn more about how they help heal our patients and their families.

[Watch the video](#)



### For physicians: *U.S. News & World Report* Best Hospitals voting

We want to remind our physicians that the voting period for the annual *U.S. News & World Report* survey is open. Board-certified physicians in 15 adult and 10 pediatric specialties who are registered Doximity users are eligible to vote in the Best Hospitals survey. **Voting is open until the end of March.**

Here's what you need to know:

Qualifying physicians can vote by directly logging in to [doximity.com](https://doximity.com) or using the Doximity app.

If you don't have an active Doximity account, please set up your profile. You should then receive an email inviting you to vote.

Please be aware that, based on *U.S. News'* methodology, voting for a single hospital has a greater impact than selecting more than one.

For questions about the rankings process, please email [usnwrvotingquestions@utsouthwestern.edu](mailto:usnwrvotingquestions@utsouthwestern.edu).

Last year, *U.S. News* recognized William P. Clements Jr. University Hospital as the No.1 hospital in Dallas-Fort Worth for the eighth consecutive year. Eleven UT Southwestern specialties – the most in Texas – ranked in the top 50 nationally.

[Cast your vote](#)



## Reminder: PHIL Award nomination deadline approaching

Calling all respiratory therapists! Last year, the PHIL (Pulmonary Health and Illness of the Lung) Award was introduced to UT Southwestern. The honor, created in 2006, is the only national, hospital-based program that recognizes respiratory therapists for the valuable role they perform in improving patients' ability to breathe.

We need your help ensuring our exceptional respiratory therapists have the opportunity to be considered. Entries for this year will be accepted through **tomorrow, March 15**. Nominations submitted after this date will be considered for next year's awards.

Submit your nominations below. If you have questions, contact Frank Trevino at [francisco.trevino@utsouthwestern.edu](mailto:francisco.trevino@utsouthwestern.edu).

[Nomination form](#)

## UTSW Events Calendar

Looking for your daily dose of happenings?  
The UTSW Calendar is updated every day.

[View upcoming or trending events](#)



Have news for an upcoming Roundup? Send it to [healthsystemcomms@utsouthwestern.edu](mailto:healthsystemcomms@utsouthwestern.edu)

Looking for a past edition? Check out the archive on [Huddle!](#)

© 2025 UT Southwestern Medical Center. All rights reserved.