



THE GEODE

Lakeside Gem and Mineral Club, Inc. (LGMC)

www.lakesidegemandmineralclub.com E-mail: lakesidegemandmineralclub@yahoo.com

Volume 93 Issue 3

March 2016

Club purpose: Promote activities of mutual interest for collecting and displaying of gems and minerals.

Address: Lakeside Gem & Mineral Club, Inc., PO Box 6652, Kennewick, WA 99336-0603

March Meetings

Club: Wednesday March 2– 6:30 social, 7:00 p.m. meeting.

Show & Board: March 21 6:30 & 7:00
Seventh Day Adventist Church, 7305 W 10th Ave.,
Kennewick

Junior Club meets March 8 6:30 pm; Banner Bank,
203 W 1st Ave., Kennewick
Junior Club Leader Thora Trumbo (509) 582-4297

GEODE Submission Deadlines:

- 19th – member articles & photos
- Day after Board mtg. - officer & committee contributions

E-mail them to

mickeemadden@charter.net

or call (509) 438-5798 to make other arrangements

In this Issue

2	Club Minutes
3	Show Minutes
4	Board Minutes
5	Junior Page
6	Junior Page
7	Classifieds
8	2016 Rock/Equipment Sale
9	Subgroups
10	Spring Raffle
11	Board of Directors
12	Silver Making Class

GEODE Reprint Permission:

Permission to reprint is granted, provided appropriate credit is given to the source.

Member contact information updates:

Please notify Cindy Guettinger at
clguettinger@att.net

March Program

We have a 2014 award winning DVD from the NFMS library for our March Program.

Do you recognize a Kentucky agate when you see one? What makes them different from other agates?

Tag along on a trip to learn how they are formed, where they are found, why they are so coveted. You'll be ready to go after seeing this!

Bragging Table

March is the month of the Aquamarine. Bring it cabbed, faceted or in rough form--
OR

Do you have a gem or mineral that has a similar color? Bring it!

Minutes – Club Meeting – February 3, 2016

Club President, Evelyn Cataldo, opened the meeting at 7:00 p.m.

General Business

- Visitors were welcomed.
- The January minutes stand approved as printed.
- LSGM congratulates Larry Hulstrom as our Rockhound of the Year. Larry has been a very active member for “decades”. Also congratulations on your retirement Larry!
- **Federation News:** Larry reported that the January issue of the Northwest Federation News includes information on the Albany, OR show. This is a combined Northwest and American Federation show starting on July 29. Check out the Federation news for more information.
- **Treasurer’s Report:** Provided by Bert Kaé-Je (not published per historic Board policy). The 2 types of oil have been ordered.
- **Rock Shows:** Evelyn and Dom Cataldo explored the Quartsite show, enjoying 70 degree weather but saw a decline in the type of rock vendors we all love. Bert Kaé-Je is going to Germany for a big agate show.

Old Business

- **Club Sub Groups:** Sign-up sheets available. Let us know your areas of interest to share with other club members.

New Business

- Pat Lambert has received 12 donations so far for the next raffle. Tickets will be available at the March and April Club meetings, as well as the April show. Anyone wishing to donate a raffle item, please contact Pat.

Bragging Table :

- Heather Moon brought in a big, dark purple amethyst specimen and a thunder egg slab with a heart in the corner. Rhea Bowerly shared two “Goodwill” hearts in rose quartz and purple glass. Marvin Barger brought in amethyst from Paraguay. Dave Westland made a beautiful Montana agate cabochon which turned out to be a little more challenging than he thought. Elmer Ringering showed a huge Tiffany Stone slab, a Hungarian amethyst specimen, and an unusual red polished petrified wood limb cast from Whiskey Creek on the middle fork of the John Day.

Door Prizes:

- Nine lucky people won door prizes and Linda donated lovely handmade boxes to 10 lucky ladies.

The meeting adjourned at 9:20 p.m.

Respectfully Submitted,
Sally Lyon, Secretary

Minutes – Show Planning Meeting – February 15, 2016

Present: (Board Members) Evelyn Cataldo, Chris Sorensen, Larry Hulstrom, Bert Kaé Je, Marty Casto, Wayne Larson, Sally Lyon.

(Members) Rosann Ferris, Jerry Sorensen, Kathryn Larson, Mary Lou Omstead.

Larry Hulstrom opened the meeting at 6:40 p.m. He reported progress in following areas:

- Advertising - The Northwest Federation Newsletter has our show flier for publication. Tri-City Herald will be contacted for ad space, members will be asked to post the flier to their Facebook page, the website will post show details, Tri-City Visitor and Convention Bureau is being contacted. Larry will look into possibly supplying a copy of the flier to local movie theaters to be included in the flash ads showing prior to every movie.
- Team Leaders have been arranged.
- Bert reiterated that receipts for reimbursement need to be to her within 90 days of purchase.
- Building Layout – Dom Cataldo will be asked to slightly adjust the layout, allowing for changes to demonstration areas.
- Contracts are all in and mostly paid. Larry is waiting for the Fairgrounds contract to be finalized.
- Demonstrations – Kathy Larson is wondering if anyone is interested in a gold panning demonstration area.
- Displays – Sign-up sheets will be available for support volunteers.
- Henry’s has contacted LSGM to be the food vendor.
- Friday lunch is sandwiches, chips and cookies. The Friday potluck main course will be ham and turkey.
- Geode Cracking – 2 six foot tables are needed, and the cracking machine needs to be checked and in good working order.
- Larry will contact the new security company for quotes and to make arrangements.
- Anyone going to the Spokane show, please take fliers.
- The mission will be contacted to again help with takedown and load-out to storage.
- Donations are needed for door prizes.

• **April Show:** Chairman, Larry Hulstrom, has fliers available for members to start handing out, and he will post a copy on our website. Volunteers to assist Team Leaders are needed in all areas of the show. Sign-up sheets will be available at the next general meeting.

• Check out the Kennewick Community Education website for information on Chris Sorensen’s upcoming chainmaille classes. Both beginner and intermediate level classes are available.

Minutes – Board Meeting – February 15, 2016

Present: (Board Members) Evelyn Cataldo, Chris Sorensen, Larry Hulstrom, Bert Kaé Je, Marty Casto, Wayne Larson, Sally Lyon.

(Members) Jerry Sorensen, Kathryn Larson, Mary Lou Omstead.

Chris Sorensen called the meeting to order at 7:45 p.m.

Old Business

- Chris reported that the case for The Reach is almost complete and ready for LED lights to be installed.
- Bert has paid all current bills. Oil has been delivered to Max. Bert will be unavailable from March 7 through March 28. Anyone needing reimbursement for expenses please get them to her before those dates and be aware that her address has changed. Phone is the same.
- Bert also reported that the Blickfields may be available for Silversmith Classes on Friday, April 22, Saturday the 23rd and Sunday the 24th providing enough people are interested. Signup sheets will be available at the March and April Club meetings.
- The motion was made and passed to purchase 2 dollies to be placed under the oil drums to allow for ease of movement. Cost should be around \$200.00.

New Business

- Evelyn reported that Kathy Larson will be stepping down as Programs Chairperson. Kathy has worked hard for two years coordinating many varied and interesting speakers and events. She has tentatively arranged programs through June. March Program - Federation DVD presentation; April – 5 Minute Rock Show Reports; May – Show and Tell Your Projects; June – Tailgating. Anyone interested in taking over for Kathy, please contact Evelyn. Thank you Kathy!
- Discussion on upcoming sub group meetings, topics of interest, how to facilitate sub groups, etc.
- The deadline to sign up for the Hancock Retreat is coming soon. Space fills up quickly so we need to get the word out.

Club meeting – March 2, 2016, 7:00 p.m. (social at 6:30). Program – *Federation DVD Presentation*

Board Meeting – March 21, 2016, 6:30 p.m. Show Planning, Board meeting to immediately follow.

The meeting adjourned at 8:45 p.m.

Respectfully Submitted

Sally Lyon, Secretary

February 2016 Junior Club Minutes
by Officer Olivia Vance and Mrs. Trumbo

- 18 children, 15 adults and 2 guests listened to 6 students read Mineral of the Month reports, including one by 6 year-old Andrew.
- Door prizes to Marcas, Eli, and Lucas included 2 compartment style boxes full of rocks which had been donated and everyone signed a thank you card.
- Our guest speaker Mrs. Evelyn Cataldo and her husband Dom who shared wonderful slides, talked about dinosaurs! She shared how they lived and displayed dino bones. Dino teeth tell us what they ate. She showed us claws, poop, eggs and foot prints and discussed their activity. "Dino gems" can be made of bone. She gave us all samples of dino poop and Mrs. Trumbo gave us mini desert roses from Oklahoma's Timberlake Rose Rock Museum.
- Adult club members in March Rhea will demo cabs and in April Guislen will share.

CONGRATULATIONS Andrew S. for earning a "Collection Badge!" He had the fun and filled out the form from www.amfed.org WAY TO GO ANDREW!!!! Check out the website -you can easily earn badges too.



President Noah
VPres. Marcas
Sec. Olivia

Apache Tears by Lukas V. -age 10

Apache tears are rounded nodules of obsidian (volcanic black glass) with diameter from about 0.5 to 5 cm.

An Apache tear looks opaque by reflected light, but translucent when held up to light. The Apache tears can be found in Arizona.

- Sources found in Google Search.

Sand flower report by Eli -age 7

Desert Rose is the colloquial name to rose like formations of crystal clusters of gypsum or bayte which include abundant. Desert Rose is a another way of saying sand flower. Petals are crystals from flattened on the crystallographic axis, fanning open in radiating a flattened crystal clusters. If iron oxides are present, the rosettes take on a rustic tone. The average size of rose rocks are anywhere from 0.5 inches (1.3 cm) to 4 inches (10 cm) in diameter.

Stilbite
by Marcas V. -age 8

Stilbite is the name of series of tectosilicate minerals of the zeolite group. Found in jalgoan. Wikipedia

Report on Apache Tear by Noah M. -age 9

1. Usually transparent. See through.
2. Black and sometimes bluish black.
3. Commonly found in the Arizona desert at main highways.
4. Can be cut, polished, and turned into jewelry.
5. Sometimes mistaken to be jet.
6. It is not a gem, but a mineral.
7. Originates from obsidian lava flows or lava domes.
8. Comes from the Arizona desert, or underground.
9. The name is similar to "Petes tears" so don't mix the names up!
10. Apache tears are not fossils but may contain fossils (very, very, rarely)
11. (bonus) Petes tears are black but spikey, unlike Apache tears.

Chabazite (English pronunciation; /'kaebzeit/) by Katie -age 8

Chabazite is in the zeolite family. Its brittle (breaks easy), glassy, white or flesh-red. Its rhombohedral crystals often are found in cavities in basalt. Within the crystals, the atoms of silicon, aluminum, and oxygen are linked in a rigid, cage like three-dimensional network. Chabazite is one of the dominant zeolites in volcanic deposits.

What color is Chabazite? They may be colorless, white, orange, brown, pink, green, or yellow. **What's the hardness?** The hardness ranges from 3 to 5 and the specific gravity from 2.0 to 2.2. **What's the luster?** The luster is vitreous. **Who named it?** It was named chabasie in 1788 by Louis-Augustin Bosc d'Anti and later changed to the current spelling.

Where is it found? Chabazite occurs most commonly in voids and in basaltic rocks. Chabazite is found in India, Iceland, the Faroe Islands, the Giants Causeway in Northern Ireland, Bohemia, Italy, Germany, along the Bay of Fundy in Nova Scotia, Oregon, Arizona, and New Jersey.

March Junior Club Program

Cabochons, Cabochons, Cabochons



Rhea Bowerly, the instructor for the adult cabochon class, will give us a demonstration on how cabochons are made. She will show the difference between templated cabs and free form.

A cabochon is a gemstone which has been shaped and polished as opposed to faceted. It will be a fun and interesting program.

Classifieds

Rock saw oil. Max Hatfield - (509) 582-6028

Also Pat and Max will be rock-hounding so saw oil will not be available the last week of August 2015 and the whole month of September 2015. Please purchase ahead of time if you will need some saw oil during that period.

Rock Saw Oil ---- Max Hatfield 509 582 6028

Saw oil purchasing information:

- Location: 26106 South Oak Kennewick WA
- Phone: 509 582 6028 home/message phone
- Must be a LSGM club member to purchase saw oil. Membership forms are available if you need to join.
- Must have your own containers
- If you call and set a date and time, please show up and show up on time.
- Diala (the old oil) \$14.00/gallon
- Superla 5 (the new oil) \$17.50/gallon

Tumbling grit. \$2/lb. For every 5 lbs. of tumbled rock you donate, get 1 lb. of grit free. Frank & Mary Lou Omstead - (509) 783-2798

"The Seattle Regional Gem & Mineral Show Committee is surplusing some display cases. There are about 3 8-foot cases available in the Seattle area. These fold down flat, much as the Federation-style cases do.

Please contact Susan Gardner if you are interested: sgardner3@mindspring.com

Mark Your Calendar!!!

Cabbing Class at the Omsteads 5:30 to 9:00

March 15th & 16th

April 19th & 20th

May 17th & 18th

June 14th & 15th

July 19th & 20th

August 16th & 17th

September 20th & 21st

October 18th & 19th

November 15th & 16th

December 20th & 21st (?)

Flintknapping at the Omsteads 5:30 to 9:00

March 10th & 24th

April 14th & 28th

May 12th & 26th

June 9th & 23rd

July 14th & 28th

August 11th & 25th

September 8th & 22nd

October 13th & 27th

November 10th

December 8th

Memorial Weekend Annual Knapping.

Howard Amon Park, Richland. Saturday & Sunday with the Puget Sound Knappers.

2016 Rock/Equipment Sale
March 19 and 20 (Saturday and Sunday), 8 am - 2 pm

Dom and Evelyn Cataldo, 99509 E. Brandon Dr., Kennewick WA 99338

Phone 509-628-0170

Neycraft Spincaster with many extras (used 6 times) - \$600
Thermolyne furnace for wax bake-out - \$300

Covington Vertical belt sander - \$100

Hydraulic Egg crackers – 1 used, and 1 new (\$50 and \$200)

Misc equipment

Buckets of Rock - \$25 and \$50 ea (from Utah, Montana,
Oregon, and Colorado)



Dino Bone slabs
Bertrandite/Tiffany Stone slabs
Thousands of mixed slabs - \$0.25 ea
Jasper slabs (Bruneau, Owyhee, etc)

Clay Canyon/Fairfield UT nodules
Snowville UT Variquoise

Utah Dino Coprolite rough \$2/lb
Utah Dino Coprolite cut and/or polished as marked
Utah Dino Bone rough \$5 and 15/lb
Utah Dino Bone polished specimens as marked

Montana agate polished specimens and mine run

Polished wood rounds/US locations, perfect specimens
Saddle Mtn wood bookends/polished rounds
Bruneau Wood Pile limbs - \$2/lb

Abalone shells, New Zealand/mother of pearl, large 8/9 inch - \$10 ea

Montana Marine Fossils, ready for cleaning/preparation
Wyoming Fossil Fish plates, ready for cleaning/preparation

Want to Join a Subgroup of the Club? Read on for Details.....

We are trying to form some small groups to promote interaction among members who share a common interest. These groups are not formal, but would need a coordinator. The groups can meet on whatever schedule they decide upon. Here are some possible small groups and discussion topics:

Petrified Wood:

- How to identify wood
- Sites where one can still dig for wood
- Special features
- Methods for cutting and polishing

Fossils:

- Classification of fossils
- Places to dig fossils
- Preparation and cleaning of fossils

Faceting:

- Sources for rough
- Cutting diagrams
- Polishing
- Valuation

Minerals:

- Types-thumbail, etc as per AFMS rules
- Regional sites for collecting
- Specific mineral (pyrite, calcite, etc)
- Fluorescent

Cabbing:

- Polishing techniques for various materials
- Working with specific material (jade, rhodonite, etc)

Selling your work:

- Craft shows
- Consignment
- E-Bay
- Business considerations

Silversmithing:

- Tools and metals
- Construction techniques (such as soldering)
- Special finishes

Wire wrapping:

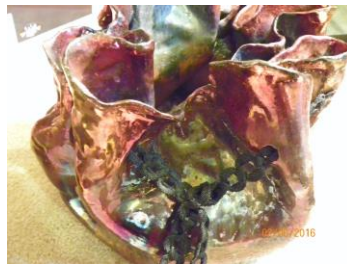
- Materials and tools
- Wrapping cabochons
- Wrapping gemstones

The above is just a sampling of the types of groups we could form to help each other learn and progress. If you are interested in joining or helping to form one of the small groups, please either signup at the meeting or talk with one of the club officers.

Note from the President: Thanks to Jerry Johnson for taking our ideas and so eloquently condensing them into this article for The Geode.

Spring Raffle, Raffle, Raffle

The spring raffle will have some great items. We will sell tickets at the March and April meetings and during the rock show. Tickets are \$1 each or 6 for \$5. We have several items that were donated by the family of Marvin and Ruth Brooks-Butler from Kitsap County Rock and Gem Society - a blue forest slab, gem specimens, cabs, and fossils. We have a knapped knife with an antler handle created and donated by Rick Tobin, a Graveyard Point sphere created by Kerry Norton, a knife with a China Hollow handle created and donated by Max Hatfield, pottery created and donated by Bert Kae-Je, a Montana agate donated by Elmer and Marilyn Ringering, a honeycomb calcite night light donated by Dom and Evelyn Cataldo, and a display case donated by Chris Sorensen.



LGMC Board of Directors

Officers E-mail: lakesidegemandmineralclub@yahoo.com

President	Evelyn Cataldo – 628-0170	Director	Wayne Larson – 586-1203
Vice President	Chris Sorensen – 392-1362	Director*	Yvonne Legare – 585-5514
Secretary	Sally Lyon – 947-8443	Federation Representative	Larry Hulstrom – 783-6210
Treasurer	Bert Kaé-Je – 582-3766	Junior Club Leader	Thora Trumbo – 582-4297
Past President	Marty Casto – 628-3509	Bulletin Editor	Mickee Madden – 438-5798

Phone numbers are all Area Code 509. By-Laws specify two year elected terms of office for Board Members, beginning in November. President, Vice President and one Director begin in even numbered years. Secretary, Treasurer and one Director (*) begin in odd numbered years. Federation Representative, Junior Club Leader, Bulletin Editor and Committee Chairs are Board-approved volunteers. By-Laws at www.lakesidegemandmineralclub.com

Rockhound Legislative Advocate

When notified by the AFMS, the NFMS, ALAA or club members about legislative issues that will affect rockhounding activities, forward that information to club members via email lists. Call Evelyn Cataldo at (509) 628-0170 for details.



Club Affiliations:

- American Federation of Mineralogical Societies (AFMS) <http://www.amfed.org>
- Northwest Federation of Mineralogical Societies (NFMS) <http://www.amfed.org/nfms>
- American Lands Access Association (ALAA) <http://www.amlands.org>

Member: Tri-Cities Visitor and Convention Bureau



THE GEODE

Volume 93, Issue 3

March 2016



LAKESIDE GEM & MINERAL CLUB, INC.

PO Box 6652

Kennewick, WA 99336-0603

Silver Making Class

Begin thinking about attending a ***Silver Making Class*** class with Chris and Peggy Blickfeld which will take place the weekend after our April Show. You'll need to register ahead and pay your \$70 fee/day which will include all materials and education. Make a ring &/or Pendant or get help with your project if you are an advanced student.

Registration will be at the March Club Meeting along with payment for 1 or 2 days. There may be a 3rd day offered, should there be adequate interest.

Register at Club Meeting on March 2nd and pay when you register.

Questions before registration are welcome.

Email Bert K-J at KJCR1@Frontier.Com