

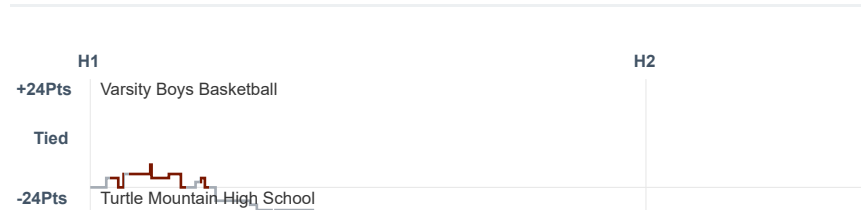
Box Score Report

WCHS @ TMHS - Jan 10, 2020 - L 61-82

Period Stats

Team	1	2	Final
WCHS	29	32	61
TMHS	46	36	82

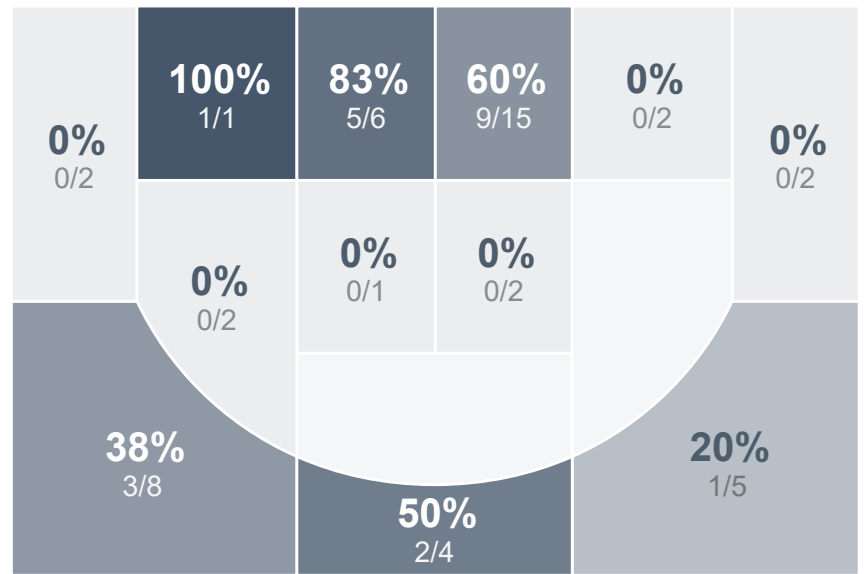
Run Graph



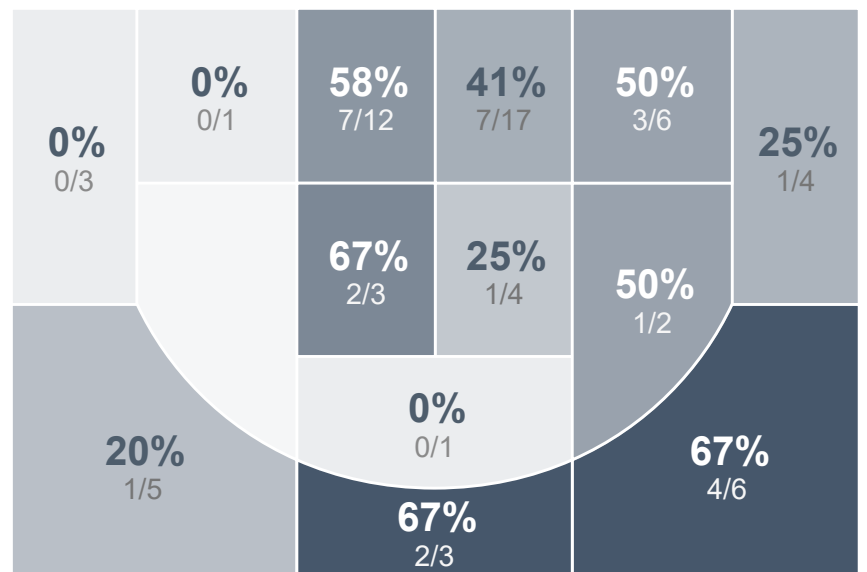
Team Stats

	WCHS	TMHS
Field Goal %	42.0%	43.3%
Effective Field Goal %	48.0%	49.3%
2FG Made/Attempted	15/29	21/46
2FG%	51.7%	45.7%
3FG Made/Attempted	6/21	8/21
3FG%	28.6%	38.1%
FT Made/Attempted	13/20	16/22
Free Throw Percentage	65.0%	72.7%
Points Per Possession	0.81	1.09
Transition Points	9	21
Points Off Turnovers	13	34
Second Chance Points	15	14
Points in the Paint	28	34
Offensive Rebounds	11	17
Defense Rebounds	22	22
Assists	8	15
Deflections	4	14
Steals	6	13
Blocks	1	1
Turnovers	27	15
Personal Fouls	21	19
Charges Taken	4	0

Varsity Boys Basketball



Turtle Mountain High School



Varsity Boys Basketball's Player Stats

Name	Pts	FG	3FG	FT	+/-	MINS	OREB	DREB	AST	DEFL	STL	BLK	TO	FOUL	CHG
#0 John Kudawoo	19	8/16	3/8	0/2	- 18	38	3	2	0	0	1	0	7	5	1
#2 Javyn McGorman	2	1/5	0/3	0/0	+ 4	19	1	0	2	0	0	0	4	3	0
#3 Britton Cranston	15	3/8	3/6	6/7	- 21	39	1	3	2	1	1	0	4	3	0
#4 Kanyon Tschetter	0	0/0	0/0	0/0	- 7	2	0	0	0	0	0	0	0	0	0
#11 Connor Cross	0	0/2	0/1	0/0	- 21	19	0	0	0	0	0	0	2	3	2
#24 La-vores Monroe	16	6/15	0/3	4/8	- 19	39	3	13	3	3	3	1	9	3	1
#25 Ryan Domerese	2	1/2	0/0	0/0	- 8	19	0	1	1	0	1	0	1	0	0
#35 Jaheem Petersen	5	1/1	0/0	3/3	- 5	14	1	0	0	0	0	0	0	3	0
#40 Caden Cluchie	2	1/1	0/0	0/0	- 10	7	1	0	0	0	0	0	0	1	0

Turtle Mountain High School's Player Stats

Name	Pts	FG	3FG	FT	+/-	MINS	OREB	DREB	AST	DEFL	STL	BLK	TO	FOUL	CHG
#2 Grant Birkland	15	5/9	3/6	2/3	+ 20	30	3	2	0	3	4	0	3	1	0
#4 Blue Kellogg	0	0/0	0/0	0/0	- 3	5	1	1	0	0	0	0	0	0	0
#5 Craig Bruce	6	2/5	0/0	2/4	+ 22	16	2	1	2	2	2	0	0	3	0
#10 Diego Samuelson	16	6/13	1/3	3/4	+ 15	26	2	1	4	2	2	0	1	3	0
🚩 #13 Unknown Athlete	5	2/9	1/3	0/0	+ 6	30	0	7	3	1	1	0	1	1	0
#15 Tristin Davis	21	8/15	1/3	4/5	+ 18	28	3	5	5	1	2	0	4	2	0
#20 Jalen Poitra	3	0/4	0/1	3/3	+ 22	24	1	2	0	0	1	1	2	3	0
#23 Keisin Peltier	10	3/8	2/5	2/3	+ 4	16	4	0	0	2	0	0	2	2	0
#32 Corey Lavallie	6	3/4	0/0	0/0	+ 1	21	1	1	1	3	1	0	2	4	0