



Conventional | Reversible | 1% 3% openness

T SCREEN

NEW!

Specifications

Item Number
 Product Category
 Fabric Style
 Openness Factor
 Composition
 UV Blockage
 Standard Packaging
 Width
 Weight
 Thickness

Classifications

Fire Classifications

Bacterial & Fungal Resistance
 Environment
 Acoustical Performance

Warranty

Fabrication

T Screen - Reversible

| ITEM | COLOR | SIDE* | FABRIC | | | | | | | | | | FABRIC + GLASS | | | | | | | |
|--------|-----------------------------|-----------------------|------------------------|--------|--------|--------|---------|----------|----------|----------|-------------------------------------|----------|----------------|----|---------------------|----|------|------|------|------|
| | | | thermal Total Solar | | Ts % | | optical | | | | commercial SHGC % Improvement | | | | residential SHGC | | | | | |
| | | | Rs % | As % | Ts % | Rv % | Tv % | Interior | Exterior | Interior | Exterior | Interior | Exterior | | | | | | | |
| 002002 | White/White | Streetside (white) | 76 | 74 | 8 | 8 | 16 | 18 | 81 | 79 | 14 | 16 | 63 | 61 | 79 | 76 | 0.24 | 0.25 | 0.13 | 0.15 |
| | | Roomside | 76 | 74 | 8 | 8 | 16 | 18 | 81 | 79 | 14 | 16 | 63 | 61 | 79 | 76 | 0.24 | 0.25 | 0.14 | 0.15 |
| 02M228 | White/ White-Steel | Streetside (white) | 72 | 69 | 16 | 16 | 12 | 15 | 77 | 74 | 10 | 12 | 61 | 58 | 84 | 82 | 0.25 | 0.28 | 0.11 | 0.13 |
| | | Roomside | 59 | 58 | 28 | 26 | 13 | 16 | 61 | 61 | 11 | 14 | 47 | 47 | 79 | 76 | 0.33 | 0.34 | 0.14 | 0.16 |
| 002001 | White/Grey | Streetside (white) | 65 | 63 | 27 | 27 | 8 | 10 | 69 | 67 | 6 | 8 | 55 | 53 | 87 | 87 | 0.29 | 0.30 | 0.08 | 0.10 |
| | | Roomside | 34 | 36 | 57 | 52 | 9 | 12 | 32 | 35 | 7 | 9 | 32 | 32 | 79 | 79 | 0.45 | 0.45 | 0.13 | 0.15 |
| 002030 | White/Charcoal | Streetside (white) | 60 | 59 | 36 | 35 | 4 | 6 | 65 | 64 | 4 | 5 | 53 | 53 | 89 | 87 | 0.31 | 0.31 | 0.07 | 0.08 |
| | | Roomside | 17 | 20 | 78 | 73 | 5 | 7 | 19 | 22 | 4 | 7 | 24 | 26 | 79 | 79 | 0.52 | 0.51 | 0.13 | 0.14 |
| 007030 | Pearl/Charcoal | Streetside (pearl) | 28 | 28 | 69 | 68 | 3 | 4 | 30 | 30 | 3 | 4 | 32 | 29 | 84 | 84 | 0.47 | 0.47 | 0.10 | 0.11 |
| | | Roomside | 10 | 10 | 86 | 85 | 4 | 5 | 10 | 11 | 3 | 4 | 18 | 18 | 82 | 79 | 0.55 | 0.55 | 0.12 | 0.13 |
| 07M387 | Pearl/ Charcoal-Fawn | Streetside (pearl) | 30 | 30 | 66 | 64 | 4 | 6 | 31 | 31 | 3 | 5 | 32 | 32 | 84 | 84 | 0.46 | 0.47 | 0.10 | 0.11 |
| | | Roomside | 16 | 17 | 80 | 77 | 4 | 6 | 17 | 18 | 3 | 5 | 24 | 24 | 82 | 79 | 0.52 | 0.52 | 0.12 | 0.13 |
| 07M287 | Pearl/ Stone-Fawn | Streetside (pearl) | 33 | 32 | 60 | 59 | 7 | 9 | 35 | 34 | 5 | 7 | 32 | 32 | 82 | 82 | 0.45 | 0.46 | 0.12 | 0.13 |
| | | Roomside | 33 | 33 | 60 | 58 | 7 | 9 | 34 | 34 | 5 | 7 | 32 | 32 | 82 | 82 | 0.45 | 0.46 | 0.12 | 0.13 |
| 030002 | Charcoal/White | Streetside (charcoal) | 10 | 9 | 87 | 87 | 3 | 4 | 11 | 10 | 3 | 4 | 18 | 18 | 82 | 79 | 0.55 | 0.55 | 0.12 | 0.13 |
| | | Roomside | 45 | 40 | 52 | 56 | 3 | 4 | 49 | 44 | 3 | 4 | 42 | 39 | 87 | 87 | 0.38 | 0.41 | 0.08 | 0.09 |
| 30M102 | Charcoal/ Grey-White | Streetside (charcoal) | 7 | 7 | 91 | 89 | 2 | 4 | 8 | 8 | 2 | 4 | 18 | 18 | 82 | 79 | 0.56 | 0.56 | 0.12 | 0.13 |
| | | Roomside | 30 | 27 | 68 | 69 | 2 | 4 | 31 | 28 | 2 | 3 | 32 | 29 | 84 | 84 | 0.46 | 0.48 | 0.09 | 0.10 |
| 00M122 | Charcoal/ Grey-Stone | Streetside (charcoal) | 6 | 6 | 91 | 90 | 3 | 4 | 6 | 6 | 3 | 4 | 18 | 16 | 79 | 76 | 0.56 | 0.57 | 0.13 | 0.13 |
| | | Roomside | 22 | 20 | 75 | 76 | 3 | 4 | 22 | 20 | 3 | 4 | 26 | 24 | 84 | 82 | 0.50 | 0.51 | 0.10 | 0.11 |
| 30M328 | Charcoal/ Charcoal-Steel | Streetside (charcoal) | 5 | 5 | 93 | 92 | 2 | 3 | 5 | 5 | 2 | 3 | 16 | 16 | 82 | 79 | 0.57 | 0.57 | 0.12 | 0.13 |
| | | Roomside | 12 | 11 | 86 | 86 | 2 | 3 | 12 | 12 | 2 | 3 | 21 | 21 | 82 | 82 | 0.54 | 0.54 | 0.11 | 0.12 |
| 30M329 | Charcoal/ Charcoal-Iron | Streetside (charcoal) | 4 | 4 | 94 | 93 | 2 | 3 | 4 | 4 | 2 | 3 | 16 | 16 | 82 | 79 | 0.57 | 0.57 | 0.12 | 0.12 |
| | | Roomside | 6 | 7 | 92 | 90 | 2 | 3 | 6 | 6 | 2 | 3 | 18 | 18 | 82 | 82 | 0.56 | 0.56 | 0.12 | 0.12 |

*Roomside: identified by the weft color side; Streetside: identified by the warp color side.

Care & Handling

Remove dust with vacuum cleaner or compressed air. Do not scrub. Do not use solvents or any abrasive substance which might damage the coating of the fabric. Clean with a sponge or a soft brush dipped in soapy water using mild detergent. Rinse with clean water. Leave the blind down until completely dry. You can also very gently rub the fabric with a clean white pencil eraser to remove small stains.

The fabric performance tests were conducted in accordance with ASTM E891 & ASTM E903-96: Solar Transmittance (Ts), Solar Reflectance (Rs), Solar Absorbance (As), Visible Reflectance (Rv), and Visible Transmission (Tv). Glass performance tests for Solar Heat Gain Coefficient (SHGC) were conducted using the Lawrence Berkeley National Laboratory Window 7.6 NFRC certified software. SHGC % improvement for commercial applications is based on a standard commercial glass makeup of Double Glazing 6 mm / 1/2" air / 6 mm with low E on surface #2. SHGC for residential applications is based on a default residential glass makeup of 3mm clear glass / 1/2" air / 3mm clear glass. Results for SHGC were obtained using the center of glass. For up-to-date test results, performance specifications and larger samples, contact the Mermet Technical Department at: www.mermetusa.com.

Mermet Corporation
 5970 N. Main Street ■ Cowpens, SC 29330
 Ph 1.866.902.9647 ■ info@mermetusa.com

mermetusa.com



Sun Control Textiles™

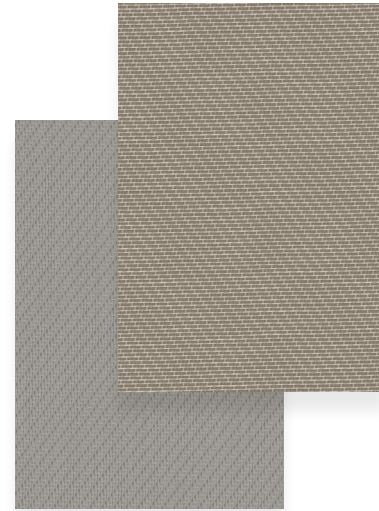
T Screen

Conventional | 1% 3% openness



1%
3%

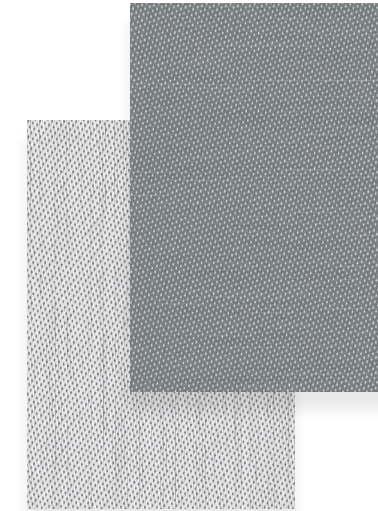
030002 | Charcoal/White
030002 | Charcoal/White



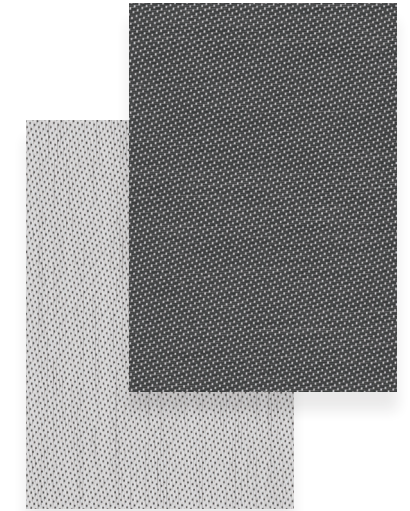
07M287
Pearl/Stone-Fawn



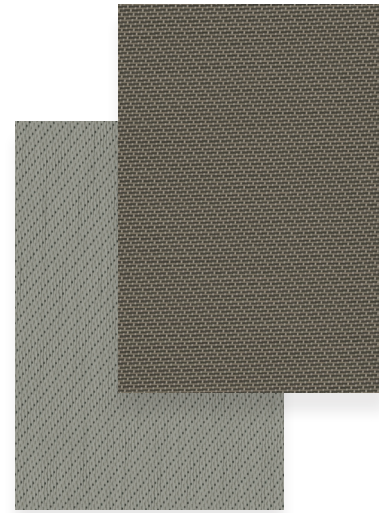
002002
White/White



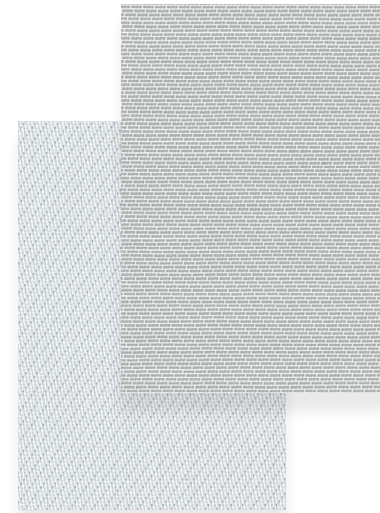
002001
White/Grey



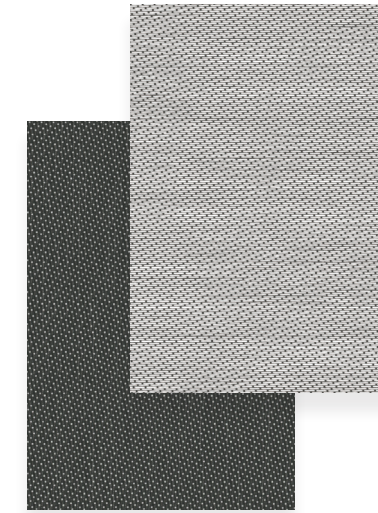
002030
White/Charcoal



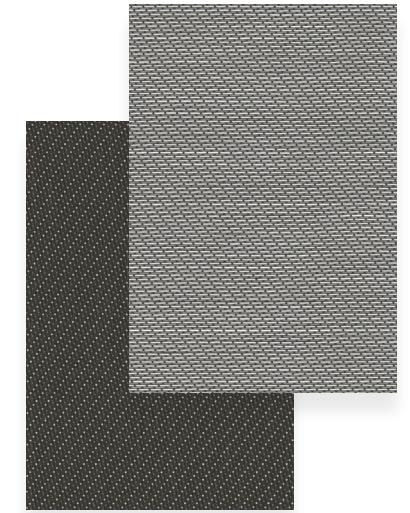
07M387
Pearl/Charcoal-Fawn



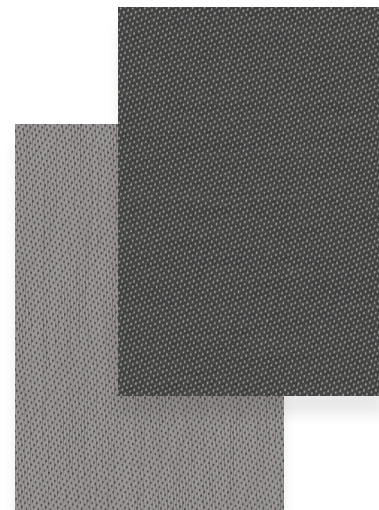
02M228
White/White-Steel



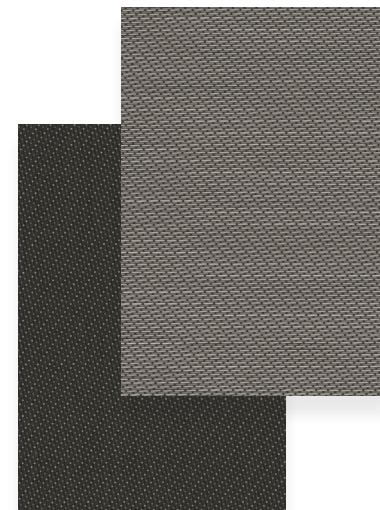
030002
Charcoal/White



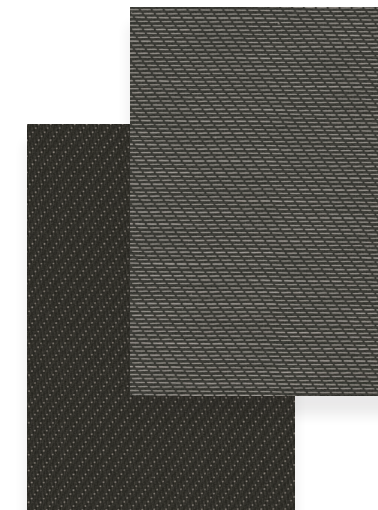
30M102
Charcoal/Grey-White



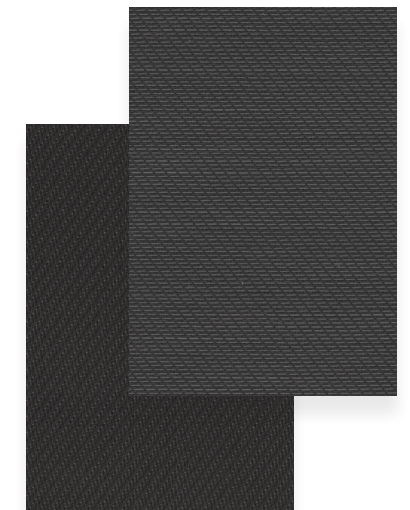
007030
Pearl/Charcoal



00M122
Charcoal/Grey-Stone



30M328
Charcoal/Charcoal-Steel



30M329
Charcoal/Charcoal-Iron