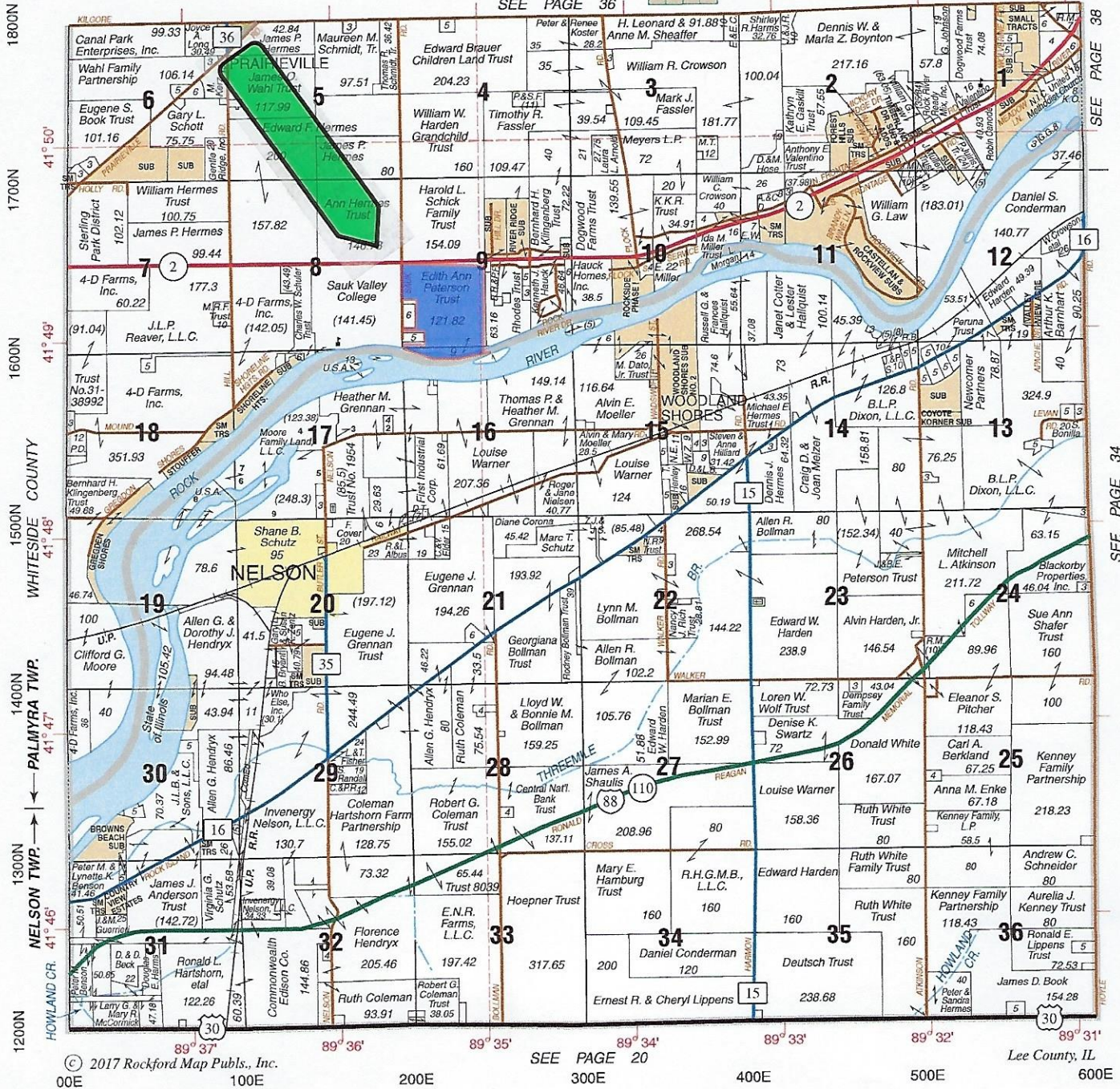


# NELSON SOUTH PART

# T.21N.-R.8E.

SEE PAGE 36



## STERLING LAND COMPANY

[www.sterlinglandcompany.com](http://www.sterlinglandcompany.com)

**Monte Van Kooten**  
 Managing Broker  
 815-718-2244

**Dan Cribben**  
 Broker  
 815-786-3311

**Jon Windstrup**  
 Broker  
 815-440-2679



Follow us on Twitter  
 @SLCfarm

306 W. 14th Street • Sterling, Illinois 61081 • [agent5841@gmail.com](mailto:agent5841@gmail.com)